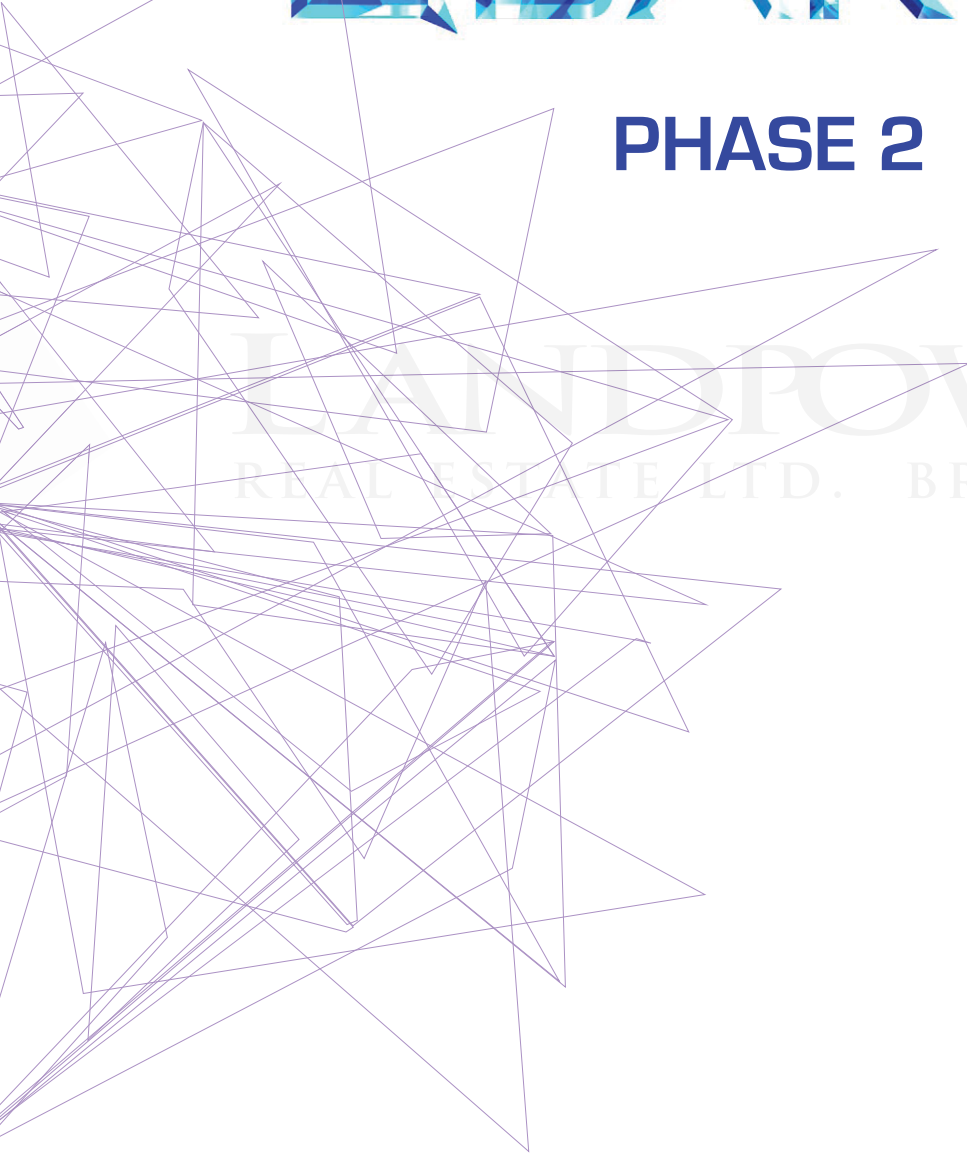


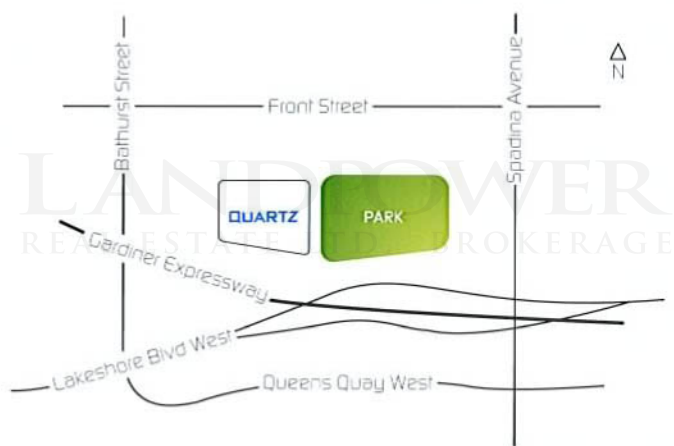
# QUARTZ

## PHASE 2

LANDPOWER  
REAL ESTATE LTD. BROKERAGE

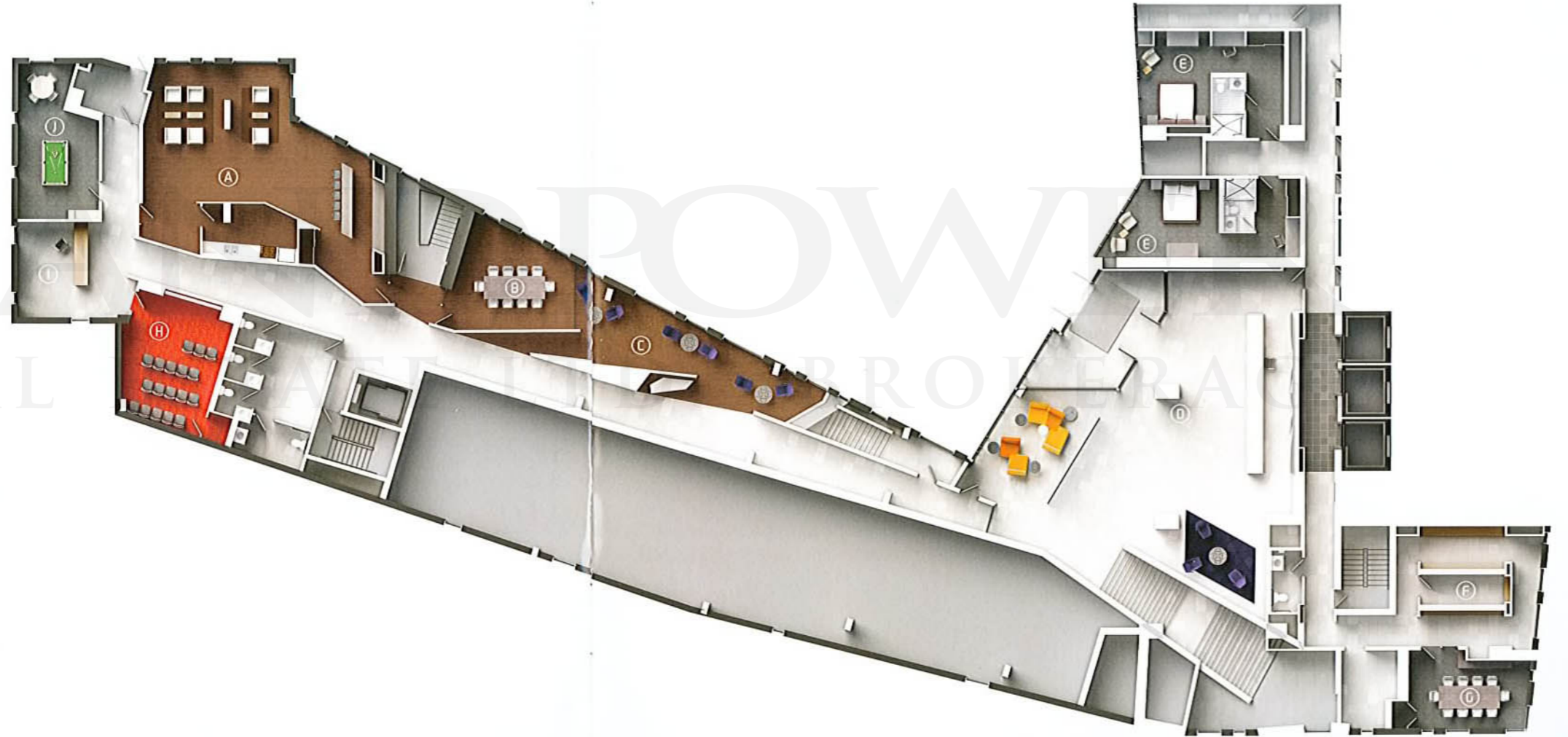






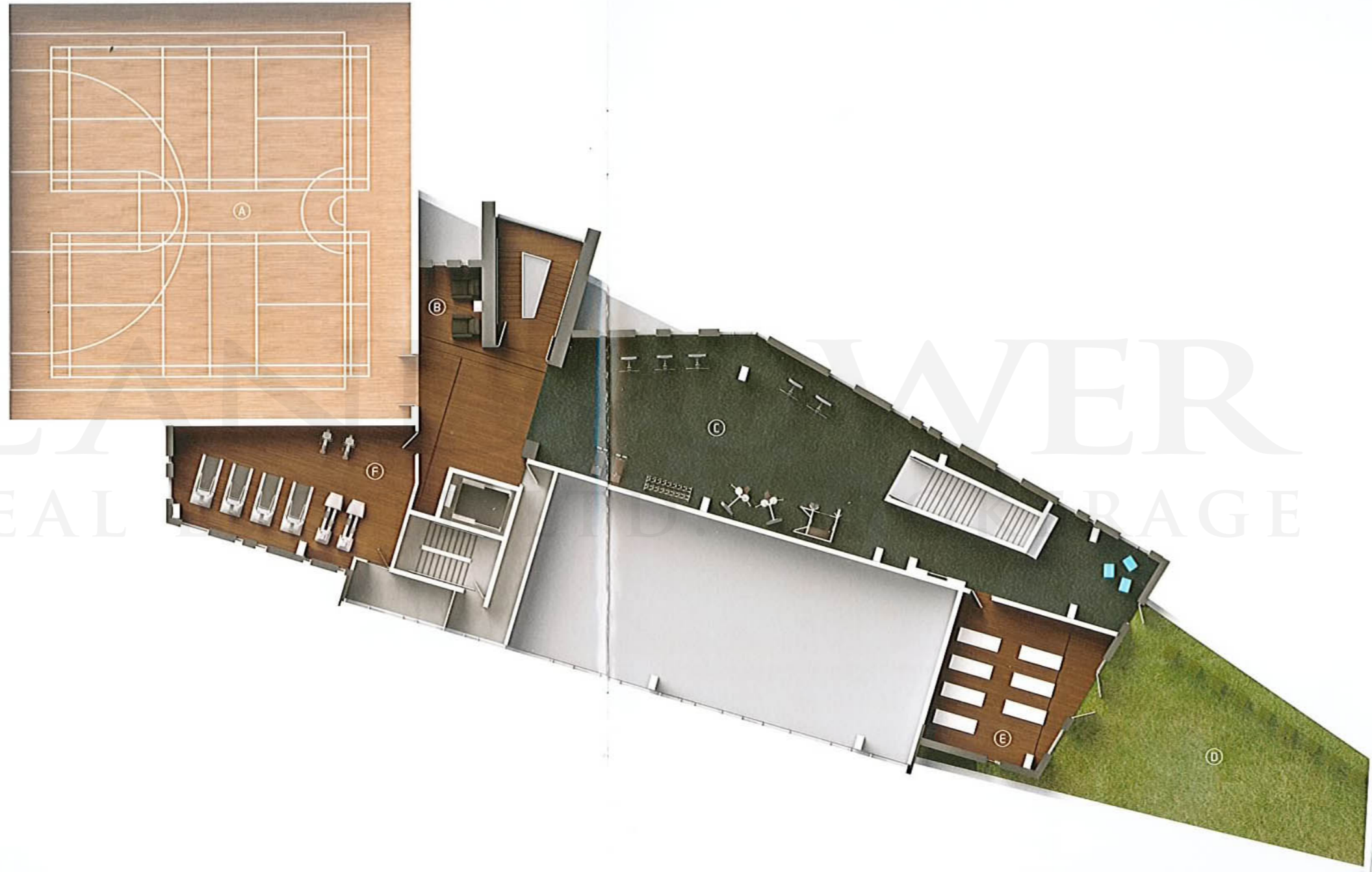
**THE PRISMA CLUB**

- A Party Lounge & Kitchen
- B Multi-Function Meeting Room
- C Open Lounge
- D Lobby
- E Guest Suites
- F Mailroom
- G Meeting Room
- H Screening Room
- I The Prisma Club Reception
- J Billiards & Cards



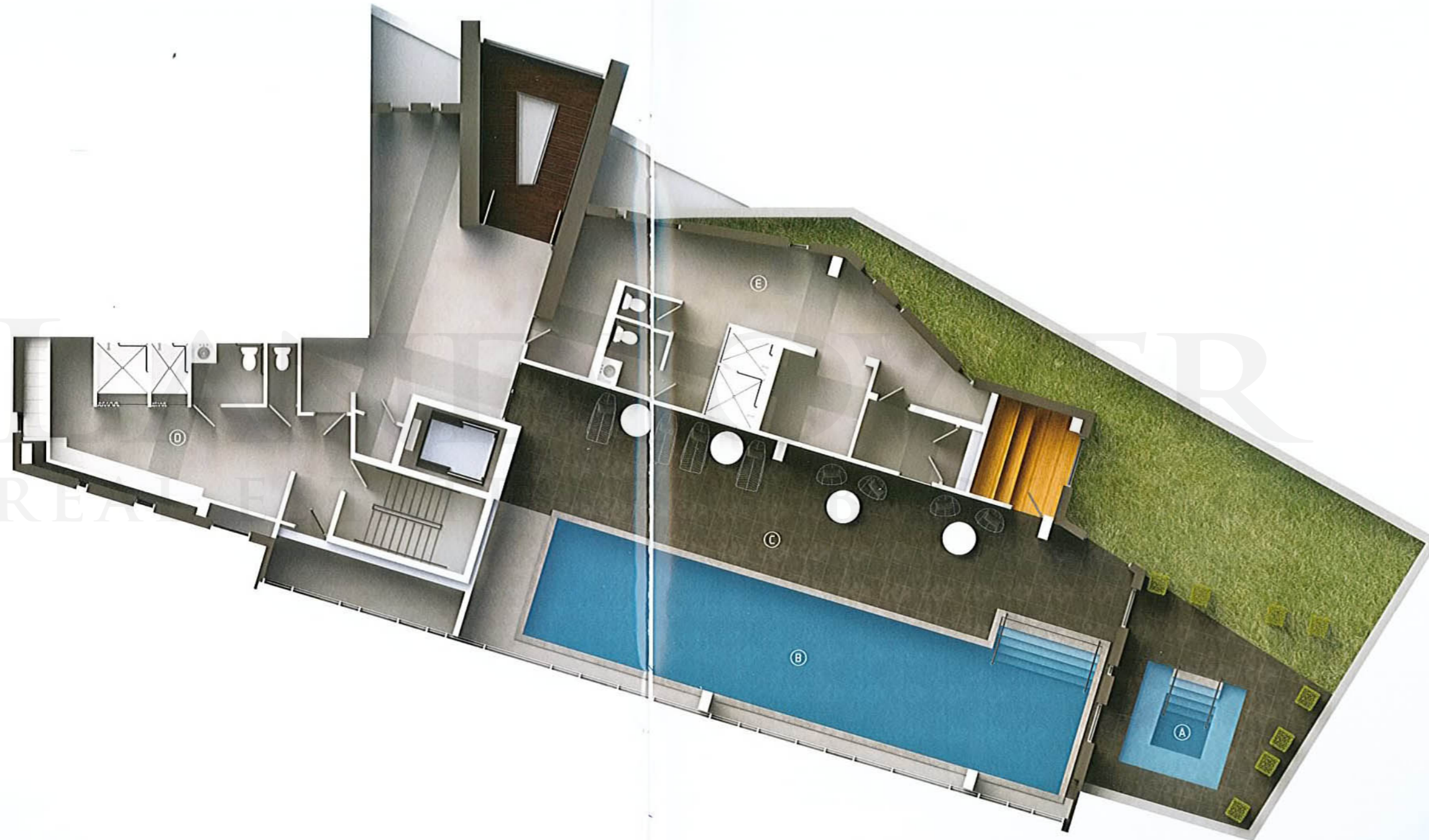
**THE PRISMA CLUB**

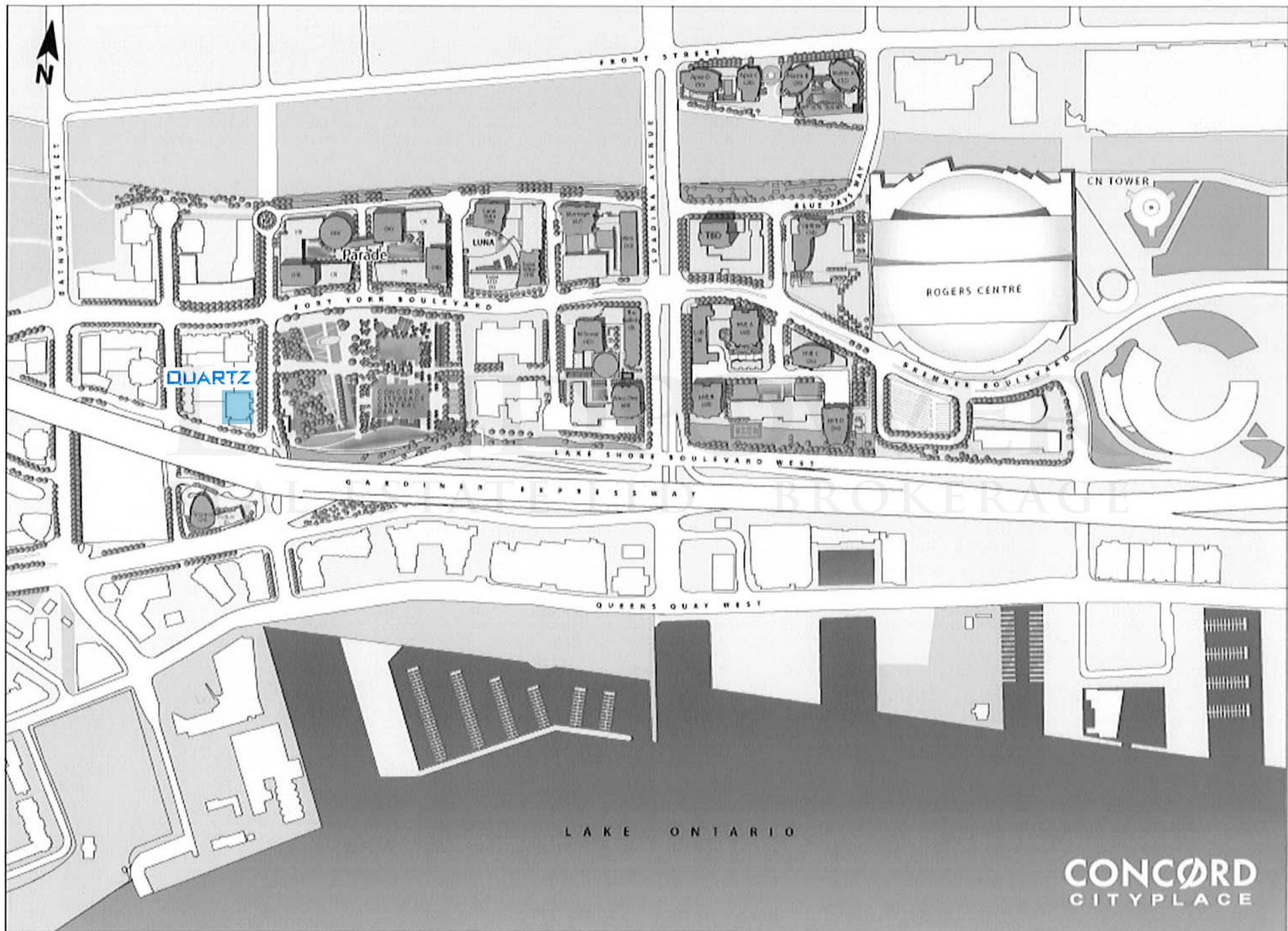
- A Gymnasium
- B Massage Lounge
- C Weight Room
- D Outdoor Tai Chi Deck
- E Yoga Studio
- F Cardio Room



**THE PRISMA CLUB**

- A Outdoor Hot Tub
- B Indoor Pool
- C Poolside Lounge
- D His Change Room
- E Her Change Room





LAKE ONTARIO

CONCORD  
CITYPLACE

# QUARTZ

## Phase 2

LAUNCH AND SELLING OPPORTUNITY

Your “VIP EXCLUSIVE”  
**ONE DAY ONLY!**

**MAY 3RD, 2011**

---

---

1) Exclusive Preview Pricing;

2) **\$3,000 CASH FOR BACHELOR UNITS**

**OR**

**\$5,000 CASH FOR 1 BED/1 BED + DEN UNITS**

**OR**

**\$10,000 CASH FOR 2 BED + UNITS**

(To be applied as a reduction off the purchase price)

---

---

\* Valid on sales made on May 3rd, 2011. Net of HST.

\*\* Eligible on confirmation of sale and clearing of initial deposit.



# QUARTZ

## PHASE 2

### EXCLUSIVE VIP BROKER SALES EVENT - F. A. Q. MAY 3RD, 2011

- Allocation of Suites:** Builder allocated. VIP agents are required to submit a completed Suite Reservation Form directly to 416.813.0600. Deadline for submission is **Thursday April 28<sup>th</sup> at 12:00 pm (noon)**. Maximum 2 suites for per VIP agent. Vendor will determine the successful unit choice and allocations. Notification of allocated units will be provided on **Friday April 29<sup>th</sup> after 12:00 pm (noon)**. Allocated units will held until 2:00 pm on May 3rd, 2011.
- Power of Attorney:** Agents are allowed to purchase on behalf of clients via Power of Attorney (P.O.A.). Must use specified valid P.O.A. form and must present photocopy of Purchaser ID. P.O.A. must provide valid ID as well.
- Deposit Schedule:** 5% upon signing of Agreement of Purchase and Sale ("APS");  
5% 120 days after Date of Agreement, via post-dated cheque;  
5% 210 days after Date of Agreement, via post-dated cheque;  
5% 300 days after Date of Agreement, via post-dated cheque;  
5% on Interim Closing.
- Proof of Identity:** Every named purchaser on the agreement must have a valid photo I.D. and S.I.N. number (if applicable). If the purchasing is done via P.O.A., a photocopy of these two pieces of information must be presented.
- Purchaser:** The named purchaser(s) must include one natural person. If a corporation needs to be added, or if the purchaser wishes to hold the investment under a holding company, names must be entered as one natural person and the corporation or holding company (joint names); direct title to the corporation or holding company can be done upon final closing. Purchaser's occupation must also be supplied.
- Assignment\*:** The named purchaser(s) will be allowed to assign the suite starting from the Interim Occupancy Date up to 3 weeks before Final Closing of the unit, however, the purchaser is not allowed to advertise the suite for sale on MLS or any other public medium.
- No change of Brokerage within the 10-day cooling period. No advertising of this exclusive VIP release is allowed.
- Locker:** \$5,000  
**Parking:** \$38,000 (available for units greater than 600 sq.ft.)  
**HST:** Included in pricing

\* Applicable only for sales made from May 3rd, 2011.

Developer reserves the right to change, modify and amend terms and conditions without prior notice. E&OE.

# QUARTZ

Deposit Requirement: 5% - upon execution of agreement of purchase and sale  
5% - in 120 days  
5% - in 210 days  
5% - in 300 days  
5% - on Interim Closing

Maintenance Fees: Estimated at \$0.51 per square foot, plus Electricity

Occupancy Date: June 18<sup>th</sup>, 2014

Taxes: Estimated at 1.00% of the purchase price

Parking: \$38,000 (for units greater than 600 sq.ft.)

Locker: \$5,000

HST: Included in pricing

All information is subject to change without prior notice. E&OE.

\* Some restrictions apply. See Sales Representative for more info.

**CONCORD**  
CITYPLACE

Effective: 04.05.2011

# QUARTZ

## Amenities

Weight Room and Fitness Studio

Yoga Studio

Swimming Pool

Hot Tub

Poolside Lounge

Men's & Women's Change Rooms

Gymnasium

Outdoor Tai Chi Deck

Spinning Room

Massage Lounge

Private Dining Party Room

Theatre

Pet Spa

Billiards & Games Room

LANDPOWER  
REAL ESTATE LTD. BROKERAGE

# QUARTZ

		Standard Finishes
<b>Kitchen</b>	<b>Cabinetry</b>	Thermofoil finish
	<b>Under-Cabinet Lighting</b>	Yes
	<b>Countertop</b>	Engineered stone
	<b>Backsplash</b>	Tile backsplash
	<b>Sink</b>	Stainless steel
	<b>Faucet</b>	Designer faucet
	<b>Appliances</b>	<ul style="list-style-type: none"> <li>Premium Stainless steel finish refrigerator</li> <li>Premium Stainless steel finish slide-in electric range with smooth cook top</li> <li>Premium Stainless steel finish combined micro/hood fan</li> <li>Premium Stainless steel finish dishwasher</li> <li>Stacked washer/dryer</li> </ul>
<b>Bathroom</b>	<b>Sink</b>	Solid surface countertop with integral sink
	<b>Cabinetry</b>	Thermofoil finish
	<b>Wall Tiles</b>	Porcelain or ceramic
	<b>Floor Tiles</b>	Porcelain or ceramic
	<b>Toilet</b>	Low-flush
	<b>Shower stall (where applicable)</b>	With Designer Faucet and Shower Head with Wall Tile and Glass Door (in certain suites)
	<b>Bathtub</b>	With Designer Faucet and Shower Head
<b>In-Suite Features</b>	<b>Flooring</b>	Laminate wood flooring throughout entry, corridor, kitchen, dining, den (in certain suites) and living areas
	<b>TV/Telephone</b>	In principal rooms
	<b>Thermostat</b>	Controlled Heating and Cooling
	<b>Safety</b>	Smoke and Heat detectors.
	<b>Bedrooms</b>	Moveable glazed partition panels (in certain suites)
<b>Bedroom</b>	<b>Flooring</b>	Carpet

		Premium Trim Package (\$5,650 for 1B/1B+; \$9,600 for 2B+)
<b>Kitchen</b>	<b>Cabinetry</b>	Frosted mirror trim around cabinetry
<b>Bathroom</b>	<b>Wall Tiles</b>	Frosted mirror in place of wall tiles

		White Appliances Package (\$3,000 credit)
<b>Kitchen</b>	<b>Appliances</b>	<ul style="list-style-type: none"> <li>White refrigerator</li> <li>White electric range</li> <li>White combined micro/hood fan</li> <li>White dishwasher</li> <li>Stacked washer/dryer</li> </ul>

# QUARTZ

## Price Reference Sheet

Exposure	Suite Type	Range of Size (sq.ft.)	Priced From	One Day Cash Incentive* (\$3,000 – Bach) (\$5,000 – 1B/1B+) (\$10,000 – 2B/2B+)	With White Appliances Package (\$3,000 savings)
NE	2B	838 sq.ft.	\$420,800	\$410,800	\$407,800
NW	2B	698 sq.ft.	\$360,100	\$350,100	\$347,100
W	Bach	443 sq.ft.	\$241,000	\$238,000	\$235,000
SW	1B	590 sq.ft.	\$302,300	\$297,300	\$294,300
SE	1B+D	683 sq.ft.	\$346,300	\$341,300	\$338,300
E	1B+S	600 sq.ft.	\$314,200	\$309,200	\$306,200

# QUARTZ

**PLEASE COMPLETE FULLY.**

**BROKERAGE NAME:** \_\_\_\_\_ **PHONE:** \_\_\_\_\_

**BROKERAGE ADDRESS:** \_\_\_\_\_

**AGENT NAME:** \_\_\_\_\_ **CELL PHONE NUMBER:** \_\_\_\_\_

**AGENT EMAIL:** \_\_\_\_\_ **AGENT FAX NUMBER:** \_\_\_\_\_

Please print your contact email clearly as you will be contacted via email for your unit requests. Purchaser must bring original government issued picture ID with them at time of purchase. All 4 deposit cheques must be presented at time of signing (payable to **Aird & Berlis in Trust**).

**Purchaser #1:**

\_\_\_\_\_  
Name in Full

\_\_\_\_\_  
Address in Full Home # Cell # Bus#

\_\_\_\_\_  
Email Address Occupation

**Purchaser #2:**

\_\_\_\_\_  
Name in Full

\_\_\_\_\_  
Address in Full Home # Cell # Bus#

\_\_\_\_\_  
Email Address Occupation

	Purchaser #1						Purchaser #2				
	Choice	Unit Number	Floor	Suite Type (Bach/1B/1B+D/ 1B+S/2B/2B+D/3 B/3B+S)	Office Use		Choice	Unit Number	Floor	Suite Type (Bach/1B/1B+D /1B+S/2B/2B+D /3B/3B+S)	Office Use
Purchaser #1	1					Purchaser #2	1				
	2						2				
	3						3				

**Your completed Suite Allocation Request Form must be faxed to 416.813.0600 by:  
Thursday APRIL 28<sup>TH</sup>, 2011 – 12:00 PM (NOON).**

Notification of allocated suites will be provided after 12:00 PM on Friday April 29<sup>th</sup>, 2011.

Allocated suites will be held until 2:00 pm on Tuesday May 3<sup>rd</sup>, 2011.

Vendor to determine the successful unit choice and allocations.



LANDPOWER  
REAL ESTATE LTD. BROKERAGE

PODIUM SUITES

# KEYPLATE

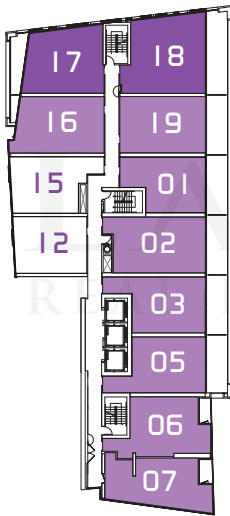
2ND FLOOR

3RD FLOOR

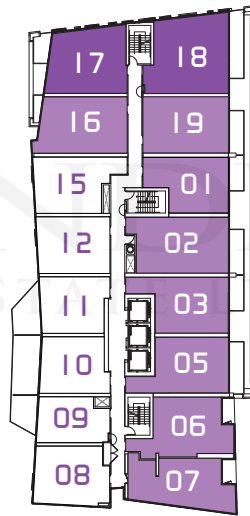
5TH FLOOR

6TH FLOOR

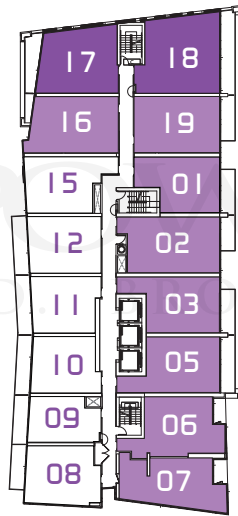
2nd Floor



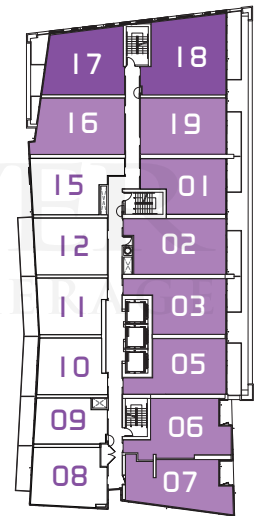
3rd Floor






5th Floor



6th Floor



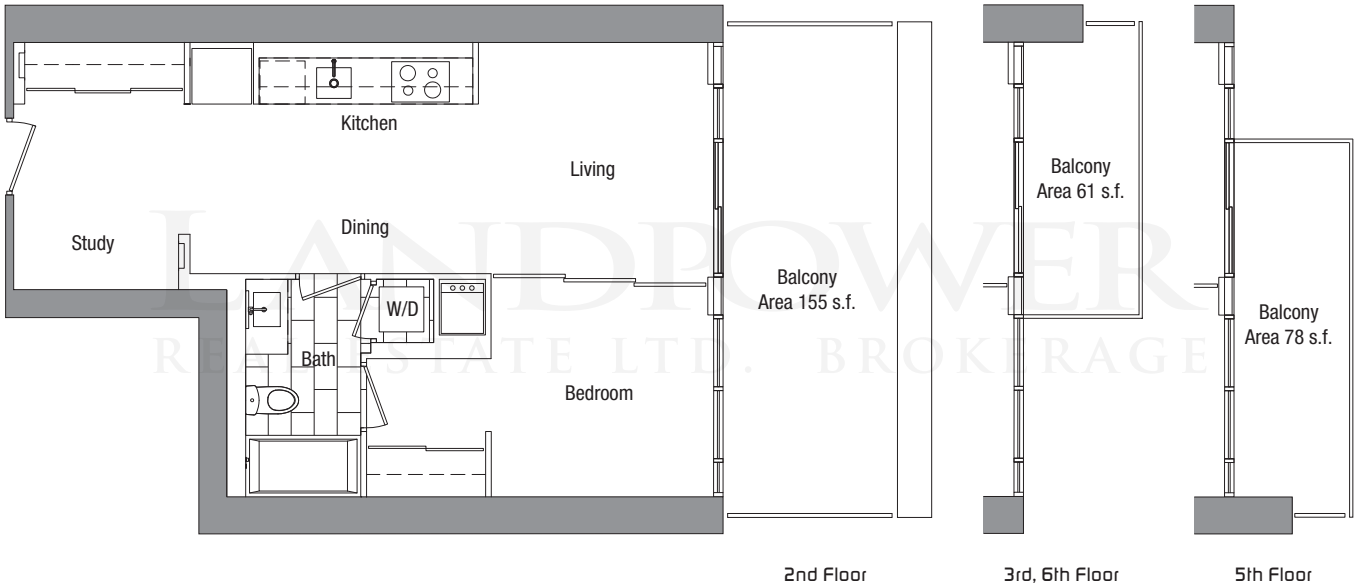
-  Two Bedroom / Three Bedroom
-  One Bedroom + Den / Study
-  One Bedroom / Bachelor



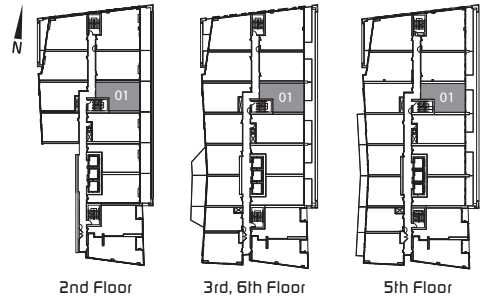
# SUITE 01

## ONE BEDROOM + STUDY

SUITE 600 S.F.  
 BALCONY 155 S.F.  
 TOTAL 755 S.F.  
 2nd Floor



3rd, 6th Floor / BALCONY 61 S.F. / TOTAL 661 S.F.  
 5th Floor / BALCONY 78 S.F. / TOTAL 678 S.F.

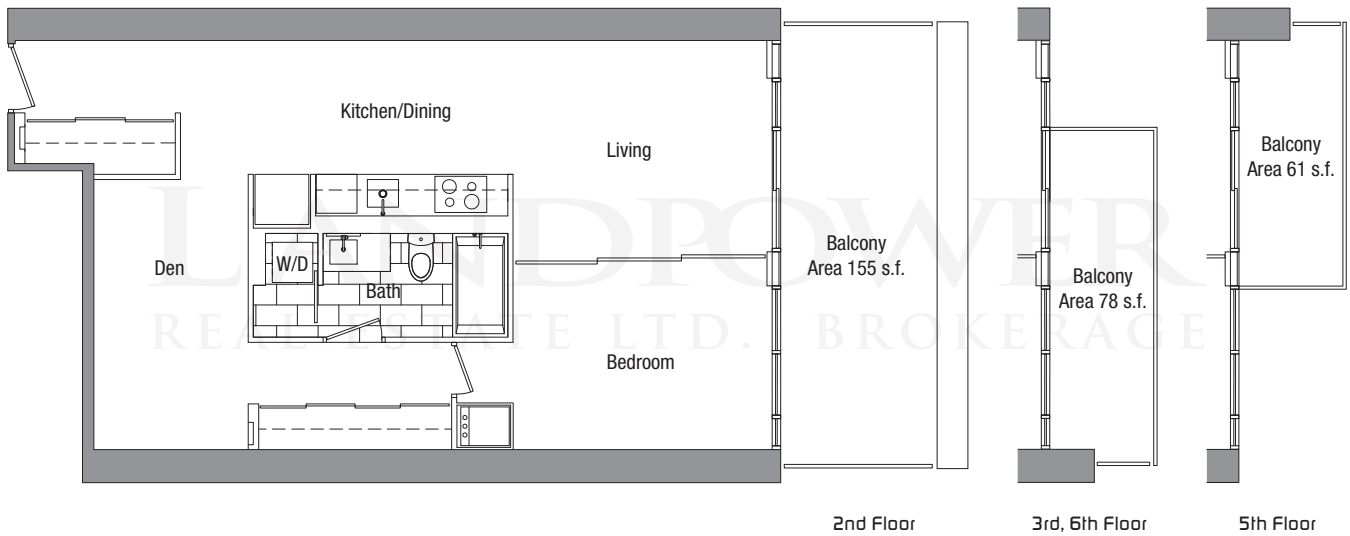


The developer reserves the right to make minor revisions to interior wall locations and exterior window system. All materials and drawings are approximate. Information is subject to change without notice. Actual square footage may vary from the stated floorplan. E. & O. E.

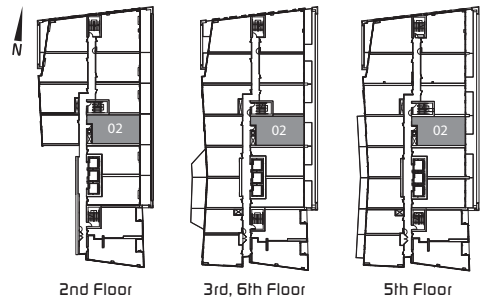
# SUITE 02

## ONE BEDROOM + DEN

SUITE 767 S.F.  
 BALCONY 155 S.F.  
 TOTAL 922 S.F.  
 2nd Floor



3rd, 6th Floor / BALCONY 78 S.F. / TOTAL 845 S.F.  
 5th Floor / BALCONY 61 S.F. / TOTAL 828 S.F.

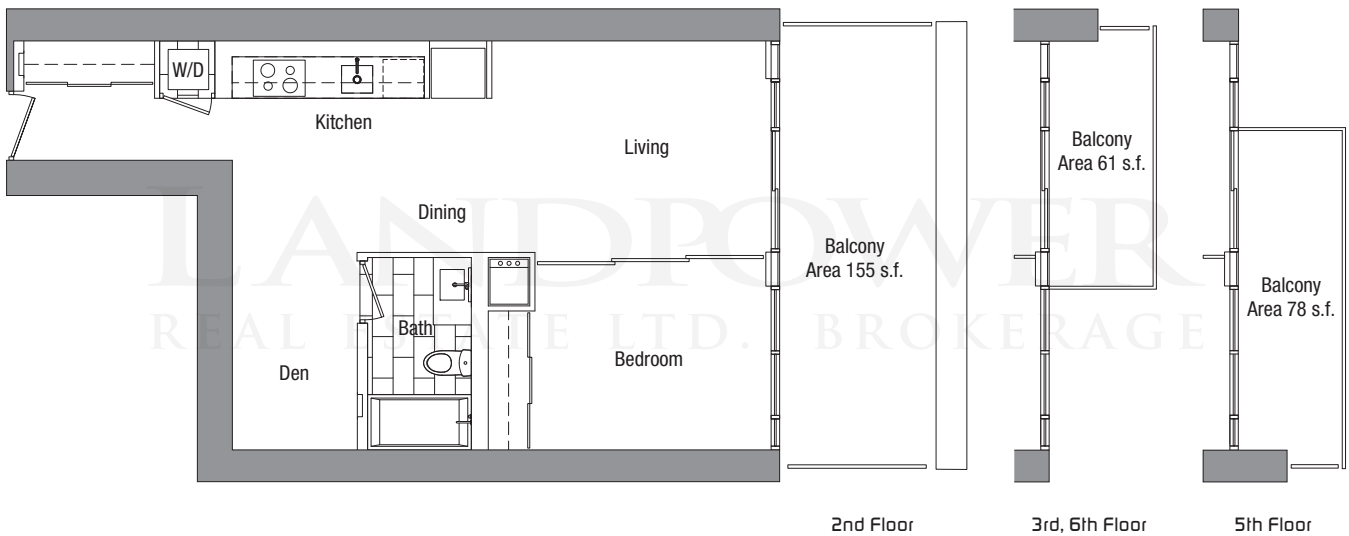


The developer reserves the right to make minor revisions to interior wall locations and exterior window system. All materials and drawings are approximate. Information is subject to change without notice. Actual square footage may vary from the stated floorplan. E. & O. E.

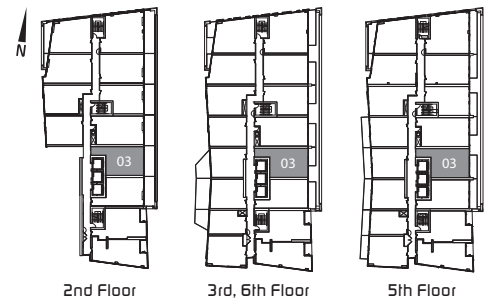
# SUITE 03

ONE BEDROOM + DEN

SUITE 688 S.F.  
BALCONY 155 S.F.  
TOTAL 843 S.F.  
2nd Floor



3rd, 6th Floor / BALCONY 61 S.F. / TOTAL 749 S.F.  
5th Floor / BALCONY 78 S.F. / TOTAL 766 S.F.

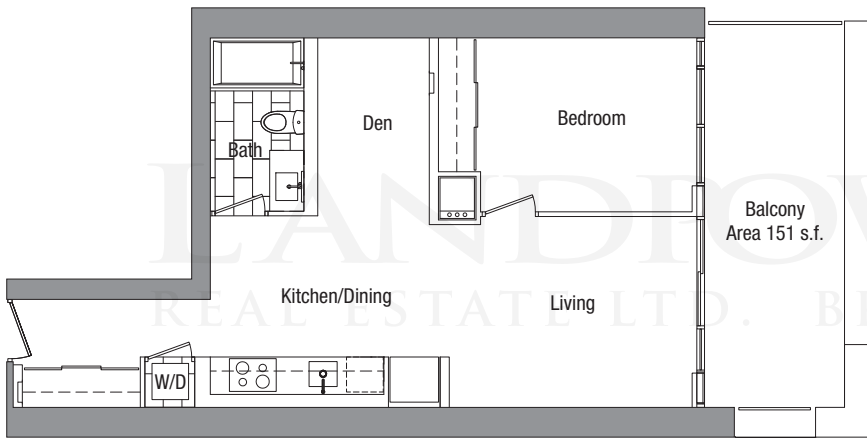


The developer reserves the right to make minor revisions to interior wall locations and exterior window system. All materials and drawings are approximate. Information is subject to change without notice. Actual square footage may vary from the stated floorplan. E. & O. E.

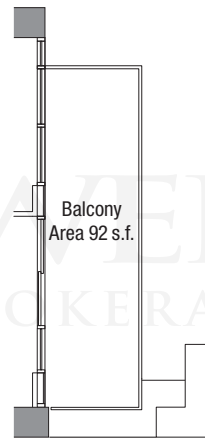
# SUITE 05

## ONE BEDROOM + DEN

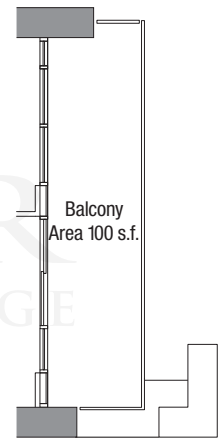
SUITE 695 S.F.  
 BALCONY 151 S.F.  
 TOTAL 846 S.F.  
 2nd Floor



2nd Floor

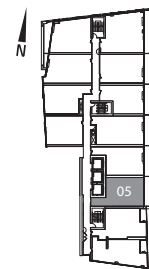


3rd, 6th Floor

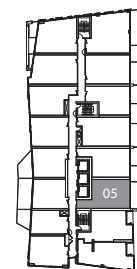


5th Floor

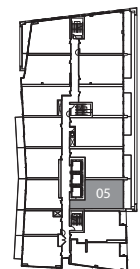
3rd, 6th Floor / BALCONY 92 S.F. / TOTAL 787 S.F.  
 5th Floor / BALCONY 100 S.F. / TOTAL 795 S.F.



2nd Floor



3rd, 6th Floor



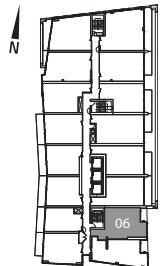
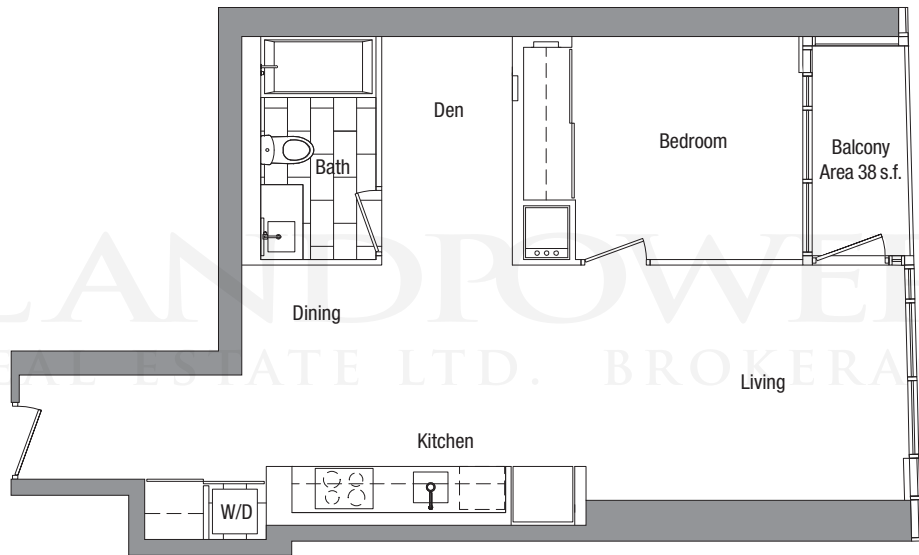
5th Floor

The developer reserves the right to make minor revisions to interior wall locations and exterior window system. All materials and drawings are approximate. Information is subject to change without notice. Actual square footage may vary from the stated floorplan. E. & O. E.

# SUITE 06

ONE BEDROOM + DEN

SUITE 700 S.F.  
BALCONY 38 S.F.  
TOTAL 738 S.F.



2nd-6th Floor

The developer reserves the right to make minor revisions to interior wall locations and exterior window system. All materials and drawings are approximate. Information is subject to change without notice. Actual square footage may vary from the stated floorplan. E. & O. E.

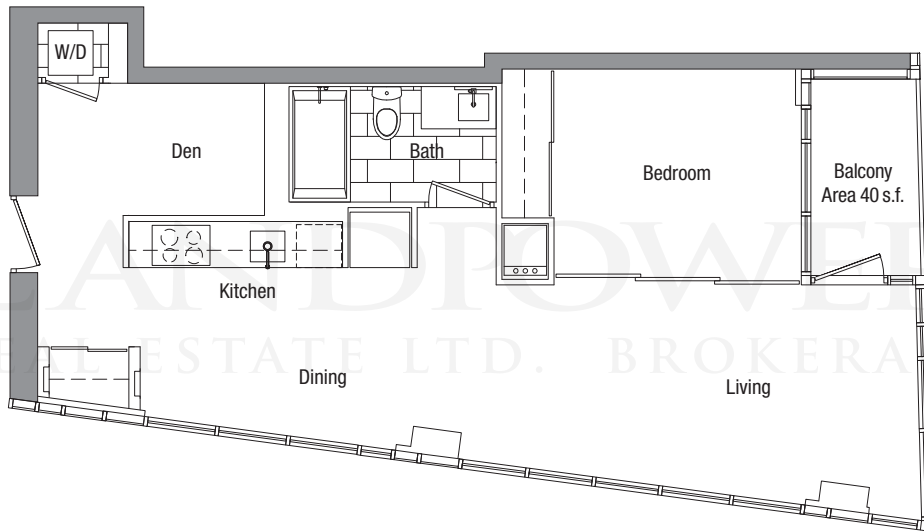
# SUITE 07

ONE BEDROOM + DEN

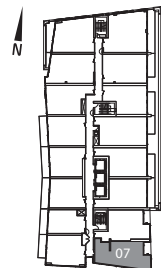
SUITE 683 S.F.

BALCONY 40 S.F.

TOTAL 723 S.F.



LANDPOWER  
REAL ESTATE LTD. BROKERAGE



2nd-6th Floor

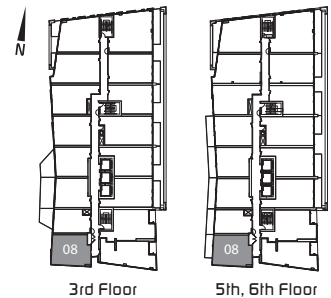
The developer reserves the right to make minor revisions to interior wall locations and exterior window system. All materials and drawings are approximate. Information is subject to change without notice. Actual square footage may vary from the stated floorplan. E. & O. E.

# SUITE 08

## ONE BEDROOM

SUITE 590 S.F.  
TOTAL 590 S.F.

3rd Floor

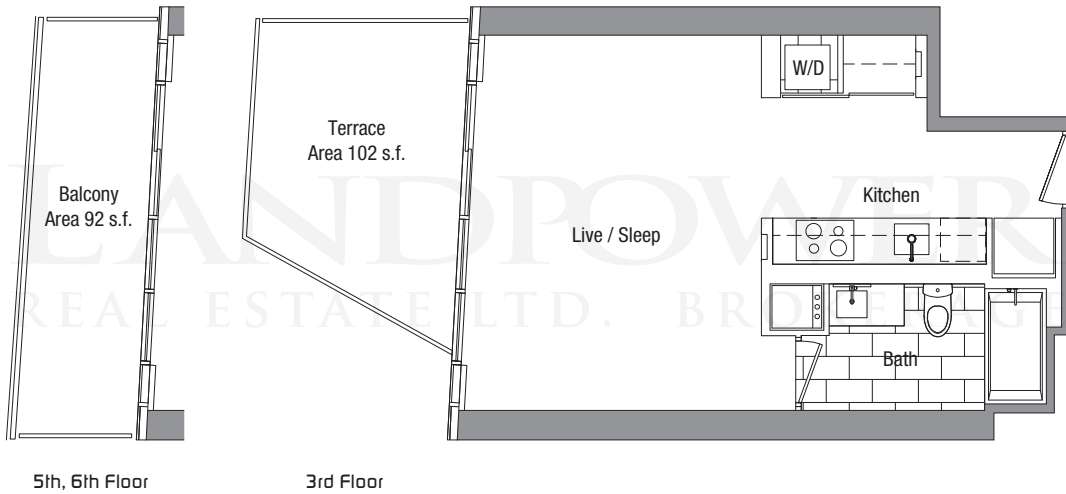


5th, 6th Floor / BALCONY 83 S.F. / TOTAL 673 S.F.

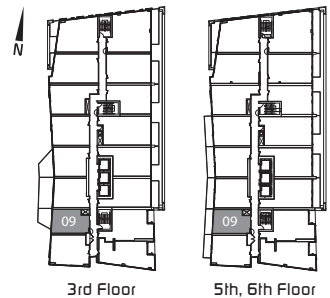
The developer reserves the right to make minor revisions to interior wall locations and exterior window system. All materials and drawings are approximate. Information is subject to change without notice. Actual square footage may vary from the stated floorplan. E. & O. E.

# SUITE 09 BACHELOR

SUITE 443 S.F.  
TERRACE 102 S.F.  
TOTAL 545 S.F.  
3rd Floor



5th, 6th Floor / BALCONY 92 S.F. / TOTAL 535 S.F.



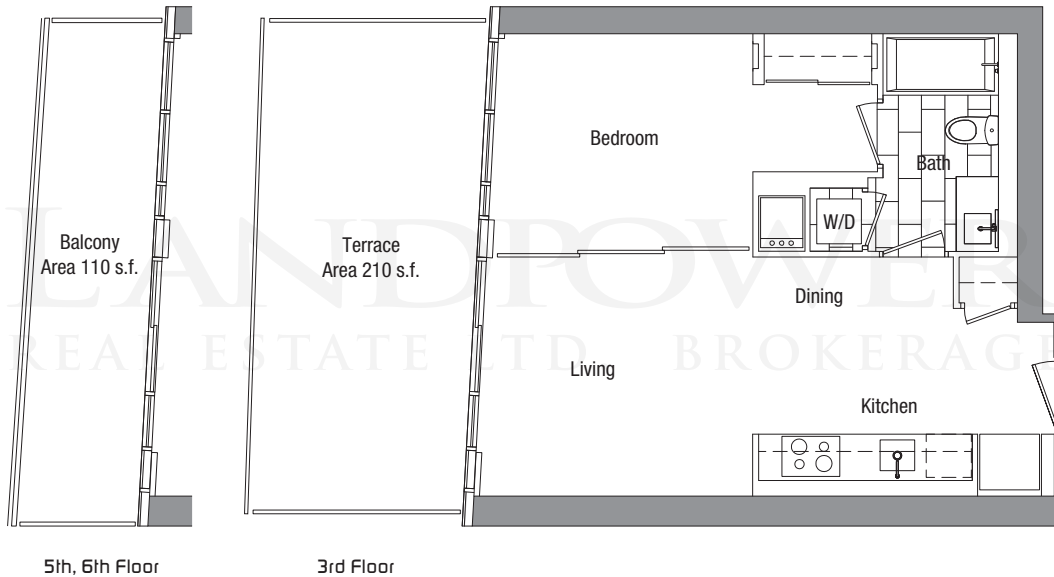
The developer reserves the right to make minor revisions to interior wall locations and exterior window system. All materials and drawings are approximate. Information is subject to change without notice. Actual square footage may vary from the stated floorplan. E. & O. E.



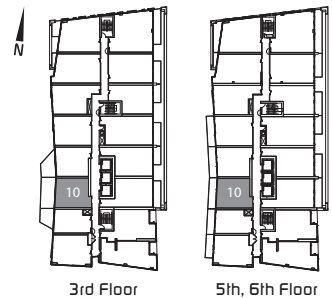
# SUITE 10 ONE BEDROOM

SUITE 540 S.F.  
TERRACE 210 S.F.  
TOTAL 750 S.F.

3rd Floor



5th, 6th Floor / BALCONY 110 S.F. / TOTAL 650 S.F.



The developer reserves the right to make minor revisions to interior wall locations and exterior window system. All materials and drawings are approximate. Information is subject to change without notice. Actual square footage may vary from the stated floorplan. E. & O. E.

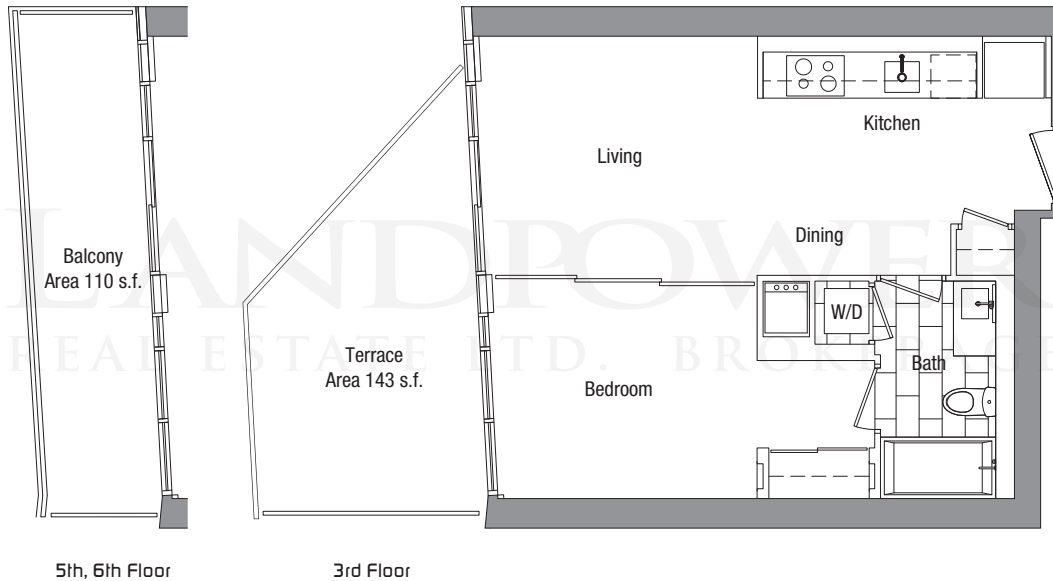
# SUITE 11 ONE BEDROOM

SUITE 535 S.F.

TERRACE 143 S.F.

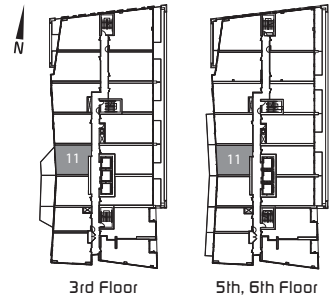
TOTAL 678 S.F.

3rd Floor



5th, 6th Floor

3rd Floor



3rd Floor

5th, 6th Floor

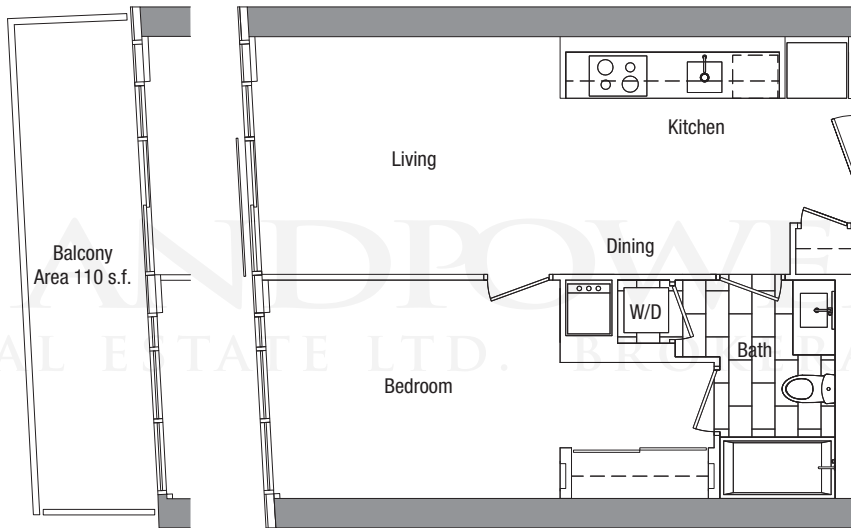
5th, 6th Floor / BALCONY 110 S.F. / TOTAL 645 S.F.

The developer reserves the right to make minor revisions to interior wall locations and exterior window system. All materials and drawings are approximate. Information is subject to change without notice. Actual square footage may vary from the stated floorplan. E. & O. E.

# SUITE 12 ONE BEDROOM

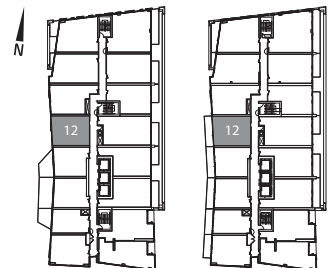
SUITE 572 S.F.  
TOTAL 572 S.F.

2nd, 3rd Floor



5th, 6th Floor

2nd, 3rd Floor



2nd, 3rd Floor

5th, 6th Floor

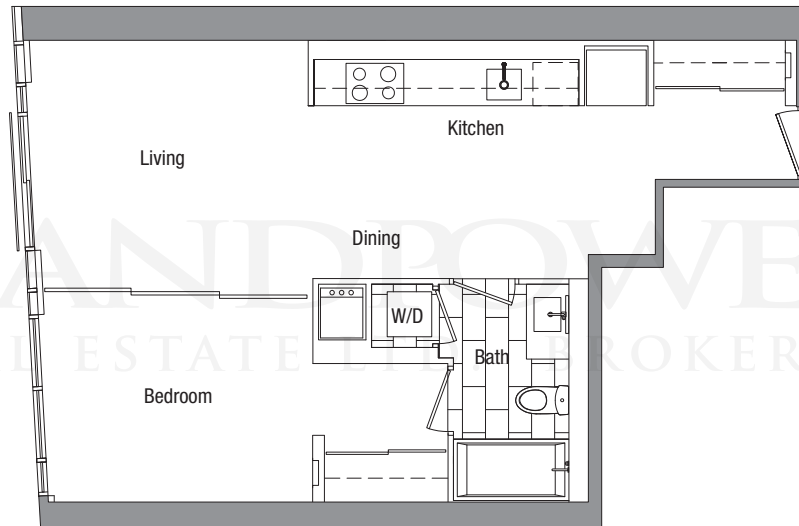
5th, 6th Floor / BALCONY 110 S.F. / TOTAL 682 S.F.

The developer reserves the right to make minor revisions to interior wall locations and exterior window system. All materials and drawings are approximate. Information is subject to change without notice. Actual square footage may vary from the stated floorplan. E. & O. E.

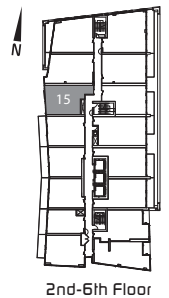
# SUITE 15

## ONE BEDROOM

SUITE 613 S.F.  
TOTAL 613 S.F.



LANDPOWER  
REAL ESTATE BROKERAGE



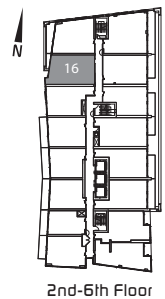
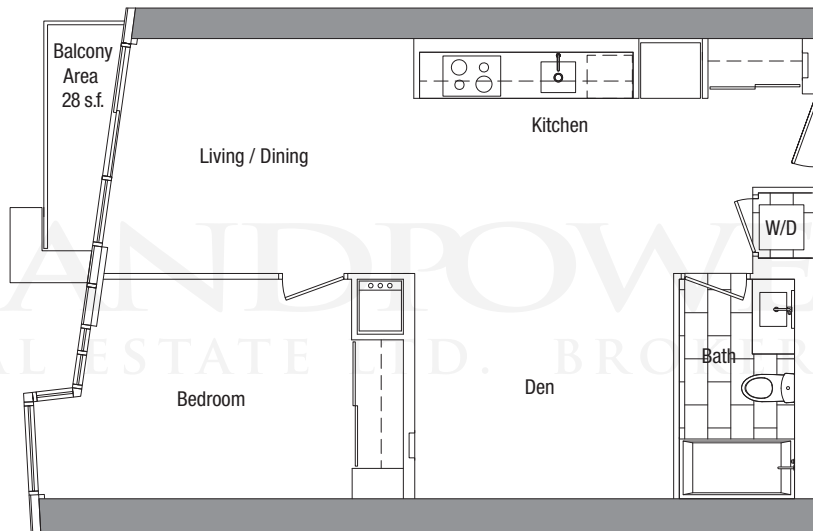
2nd-6th Floor

The developer reserves the right to make minor revisions to interior wall locations and exterior window system. All materials and drawings are approximate. Information is subject to change without notice. Actual square footage may vary from the stated floorplan. E. & O. E.

# SUITE 16

ONE BEDROOM + DEN

SUITE 698 S.F.  
BALCONY 28 S.F.  
TOTAL 726 S.F.



The developer reserves the right to make minor revisions to interior wall locations and exterior window system. All materials and drawings are approximate. Information is subject to change without notice. Actual square footage may vary from the stated floorplan. E. & O. E.

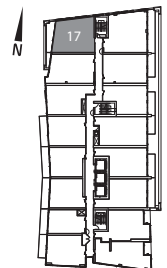
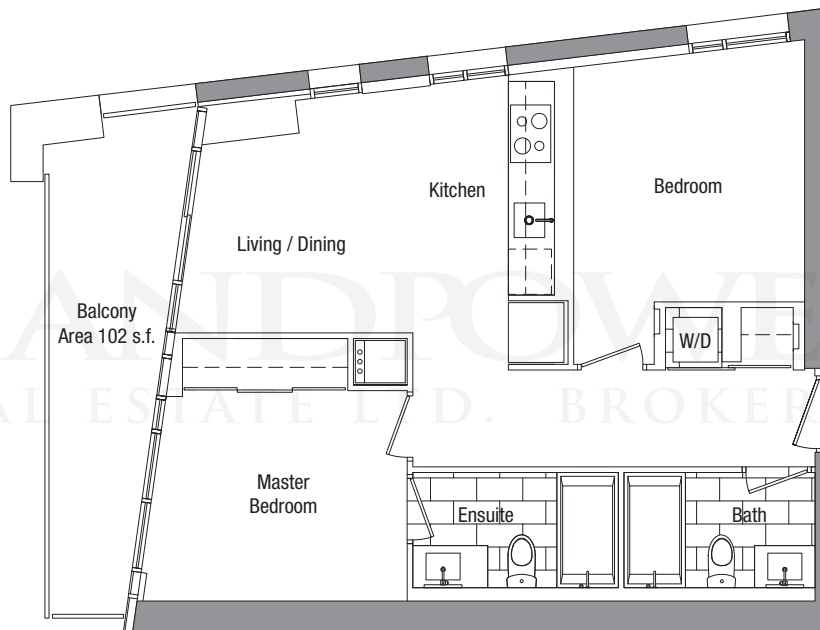
# SUITE 17

## TWO BEDROOM

SUITE 698 S.F.

BALCONY 102 S.F.

TOTAL 800 S.F.



2nd, 5th Floor

The developer reserves the right to make minor revisions to interior wall locations and exterior window system. All materials and drawings are approximate. Information is subject to change without notice. Actual square footage may vary from the stated floorplan. E. & O. E.

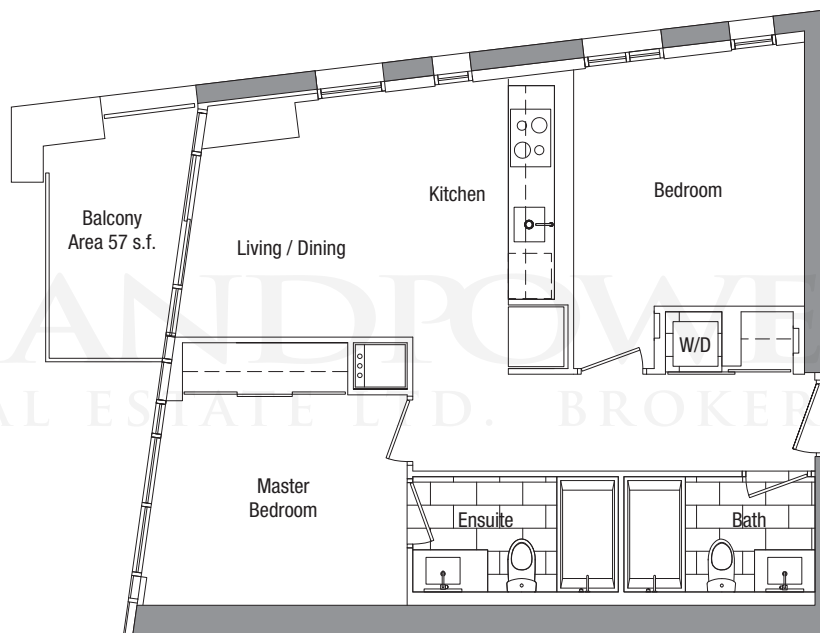
# SUITE 17

## TWO BEDROOM

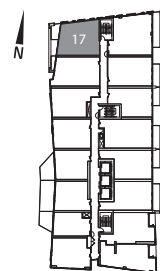
SUITE 698 S.F.

BALCONY 57 S.F.

TOTAL 755 S.F.



LANDPOWER  
REAL ESTATE LTD. BROKERAGE



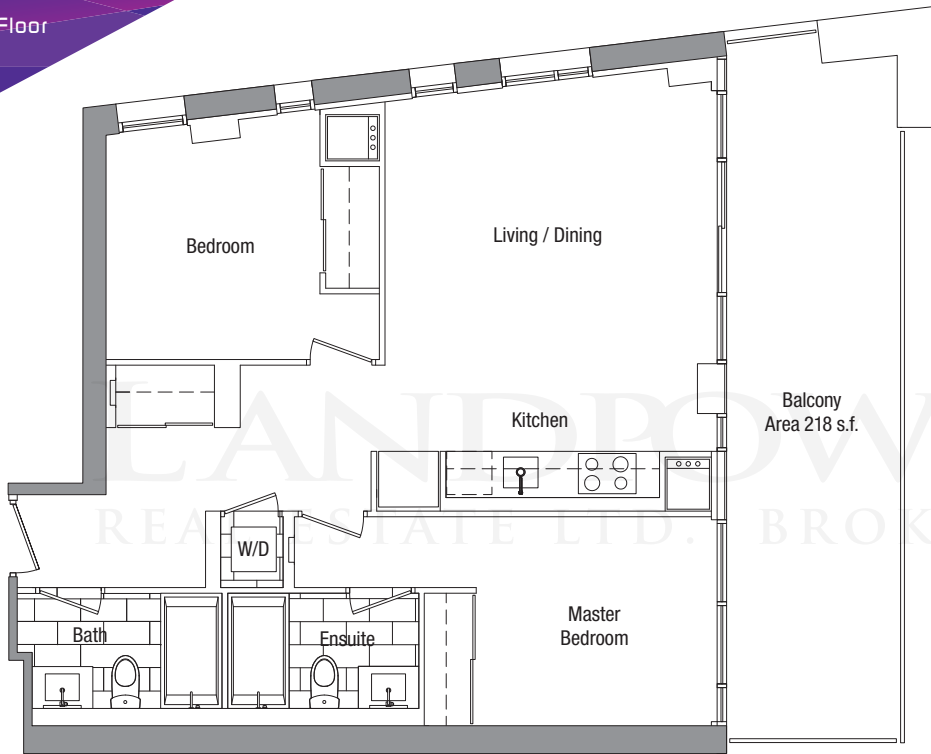
3rd, 6th Floor

The developer reserves the right to make minor revisions to interior wall locations and exterior window system. All materials and drawings are approximate. Information is subject to change without notice. Actual square footage may vary from the stated floorplan. E. & O. E.

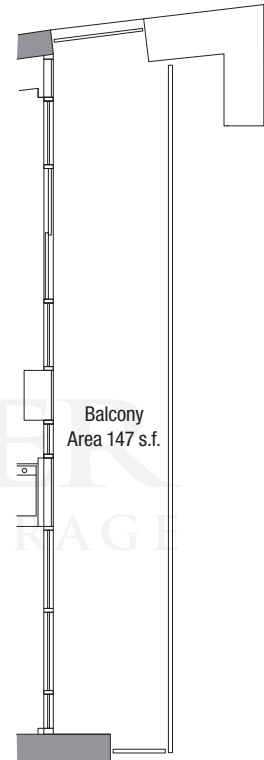
# SUITE 18

## TWO BEDROOM

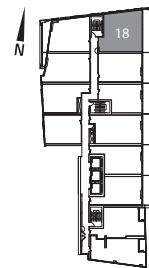
SUITE 838 S.F.  
BALCONY 218 S.F.  
TOTAL 1056 S.F.  
2nd Floor



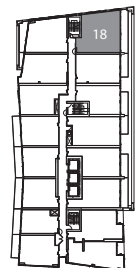
2nd Floor



5th Floor



2nd Floor



5th Floor

5th Floor / BALCONY 147 S.F. / TOTAL 985 S.F.

The developer reserves the right to make minor revisions to interior wall locations and exterior window system. All materials and drawings are approximate. Information is subject to change without notice. Actual square footage may vary from the stated floorplan. E. & O. E.



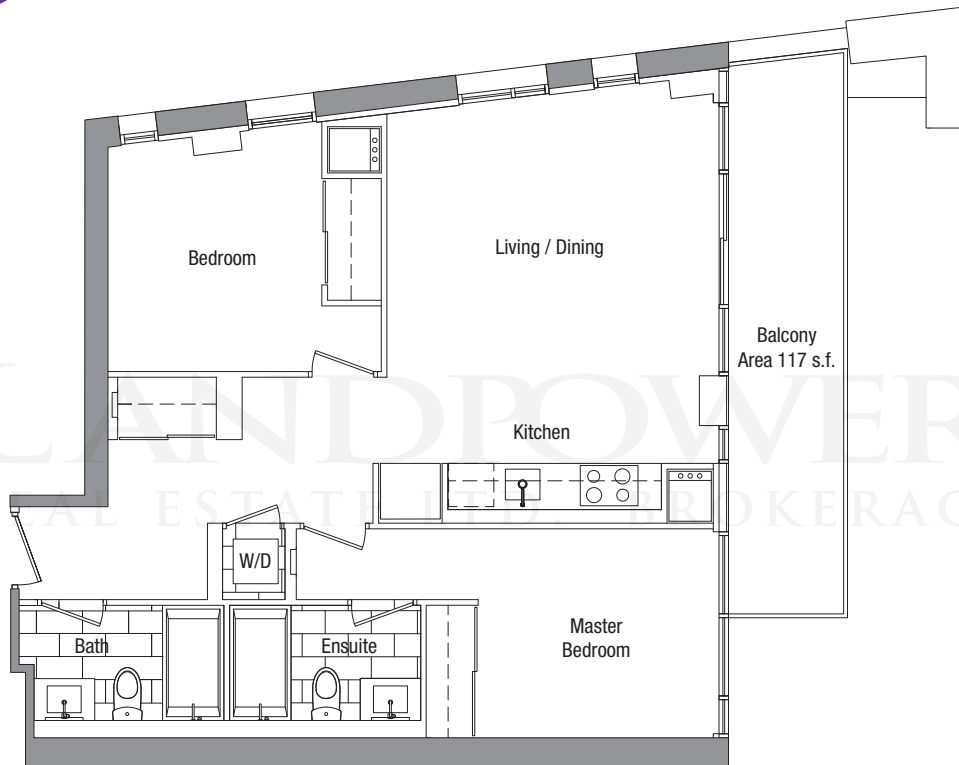
# SUITE 18

## TWO BEDROOM

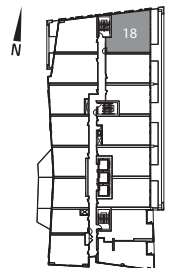
SUITE 838 S.F.

BALCONY 117 S.F.

TOTAL 955 S.F.



LANDPOWER  
REAL ESTATE BROKERAGE



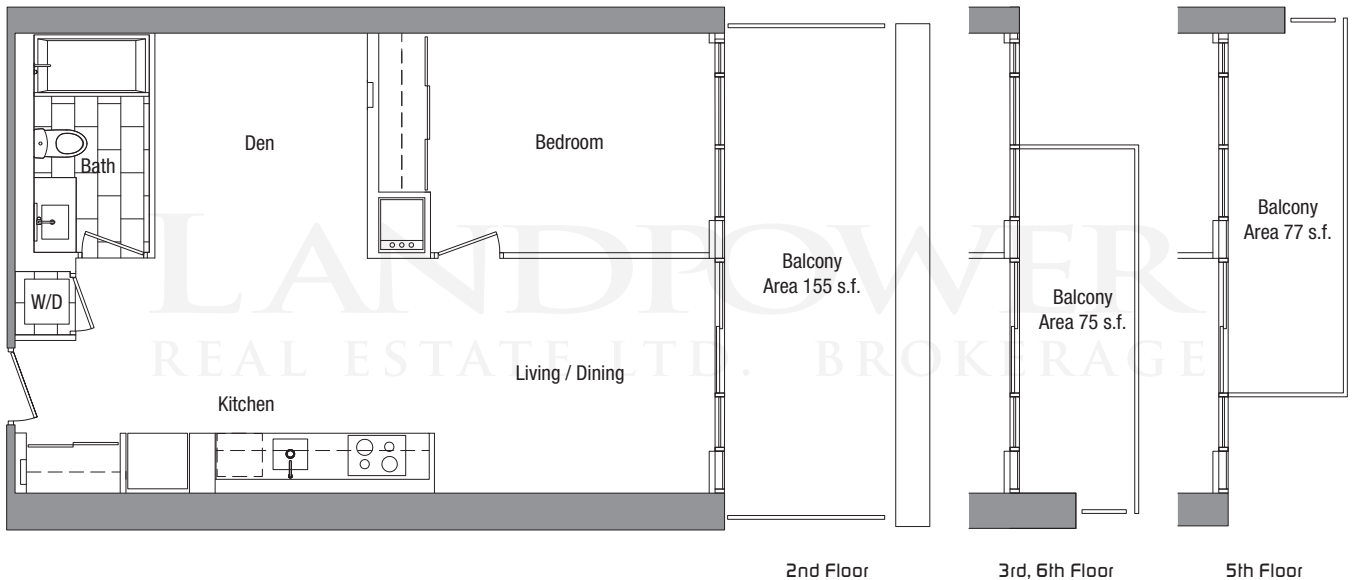
3rd, 6th Floor

# SUITE 19

ONE BEDROOM + DEN

SUITE 673 S.F.  
BALCONY 155 S.F.  
TOTAL 828 S.F.

2nd Floor

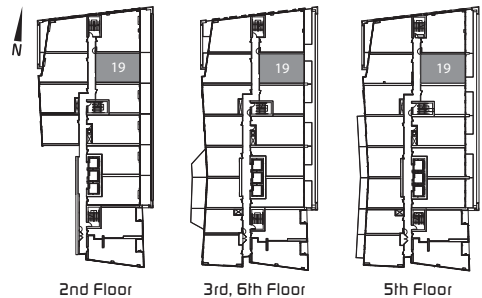


2nd Floor

3rd, 6th Floor

5th Floor

3rd, 6th Floor / BALCONY 75 S.F. / TOTAL 748 S.F.  
5th Floor / BALCONY 77 S.F. / TOTAL 750 S.F.



2nd Floor

3rd, 6th Floor

5th Floor

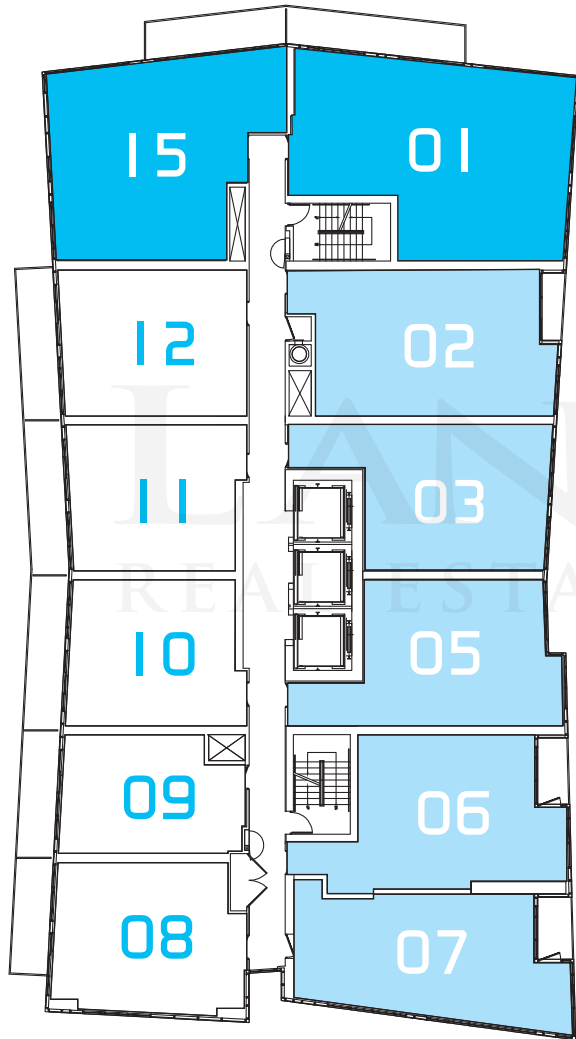
The developer reserves the right to make minor revisions to interior wall locations and exterior window system. All materials and drawings are approximate. Information is subject to change without notice. Actual square footage may vary from the stated floorplan. E. & O. E.




# LANDPOWER

REAL ESTATE LTD. BROKERAGE

Presentation Centre  
23 Spadina Avenue / South of Front Street  
416.813.0999 [cityplace.ca](http://cityplace.ca)

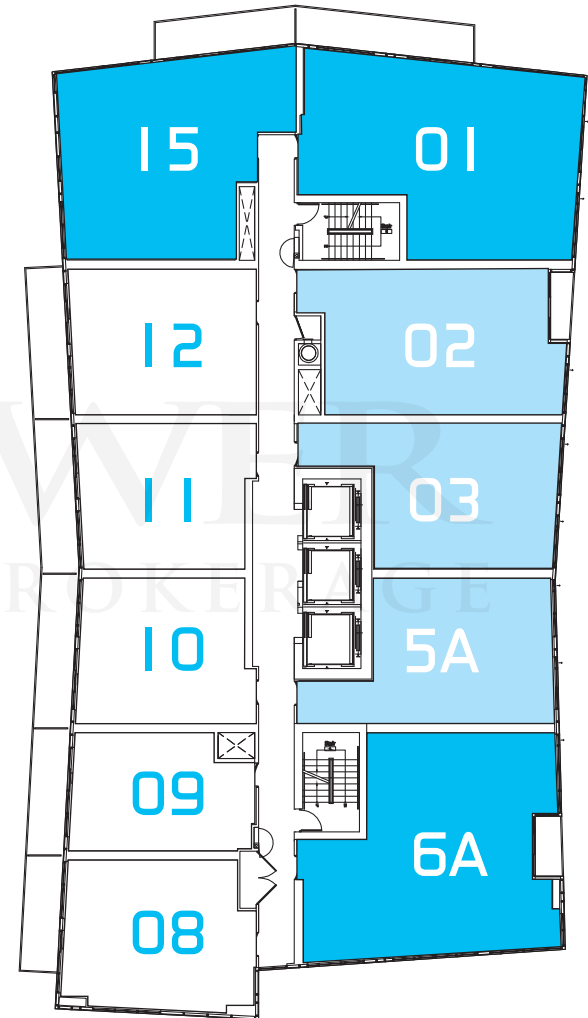
## Lower Typical



-  Two Bedroom / Three Bedroom
-  One Bedroom + Den
-  One Bedroom / Bachelor



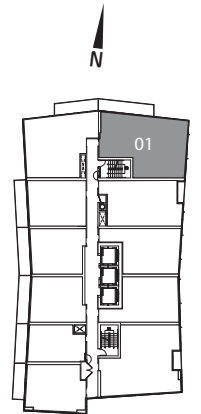
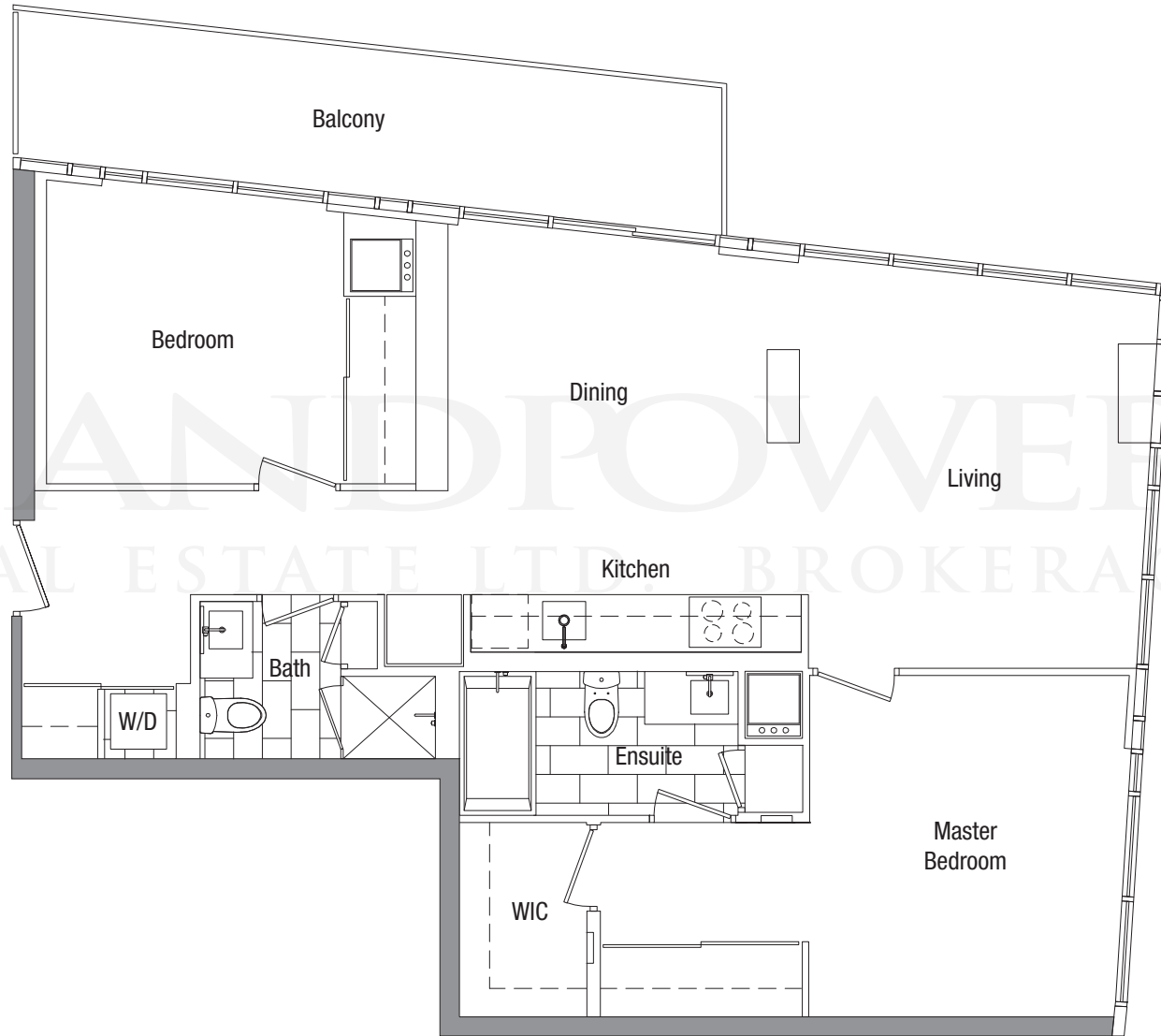
## Upper Typical



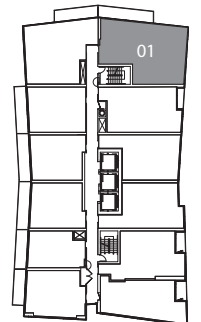
# SUITE 01

TWO BEDROOM

SUITE 1008 S.F.  
BALCONY 130 S.F.  
TOTAL 1138 S.F.



Upper Typical

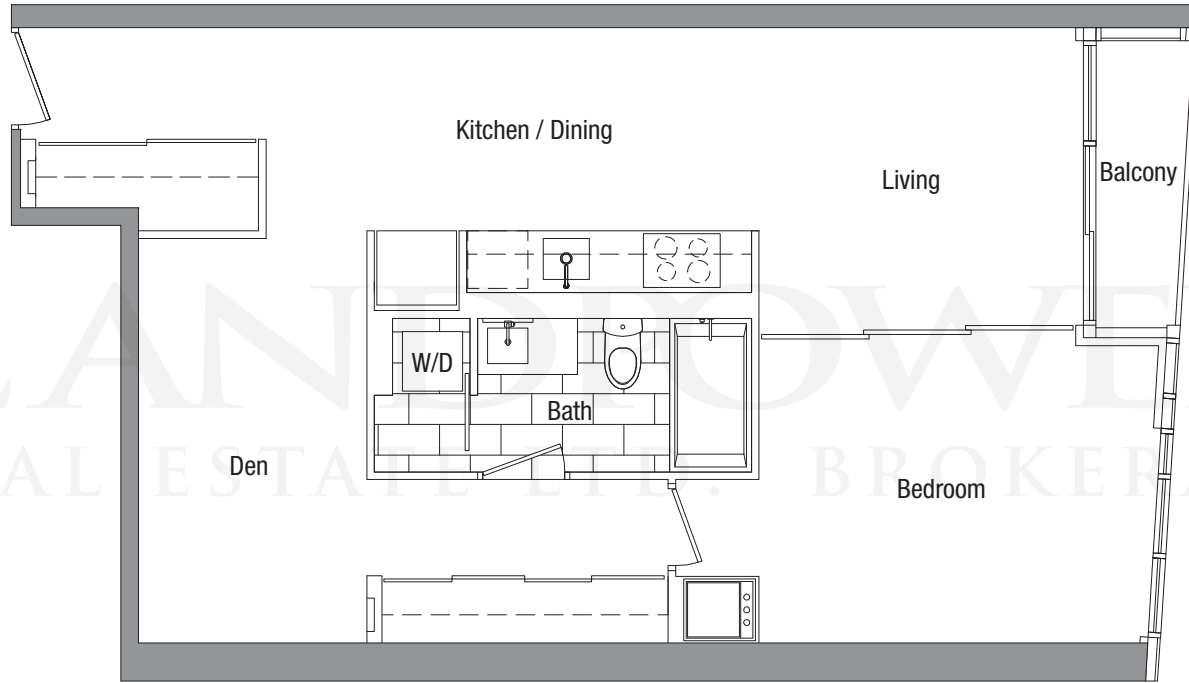


Lower Typical

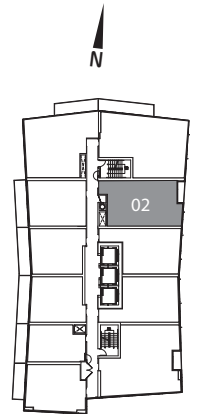
# SUITE 02

ONE BEDROOM + DEN

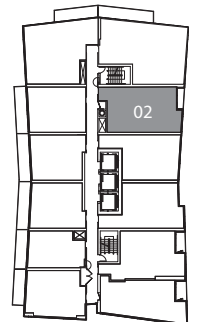
SUITE 748 S.F.  
BALCONY 28 S.F.  
TOTAL 776 S.F.



LANE POWER  
REAL ESTATE BROKERAGE



Upper Typical

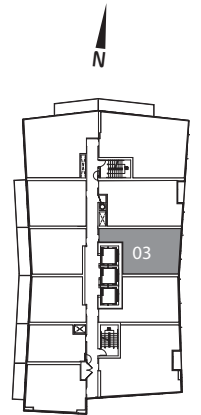
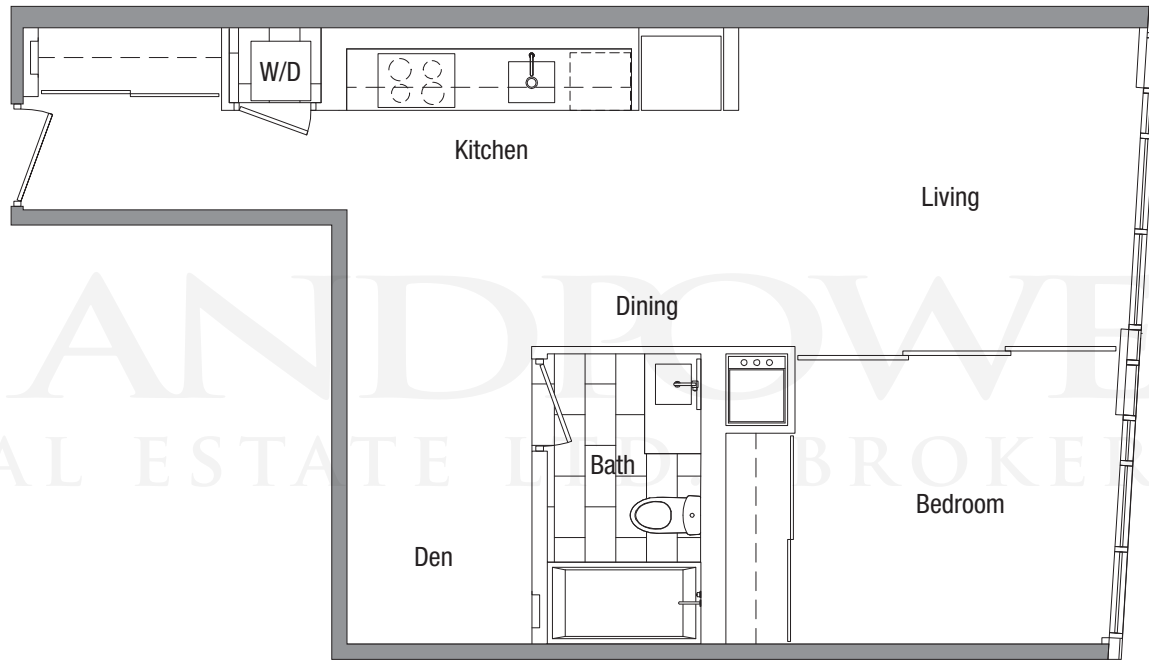


Lower Typical

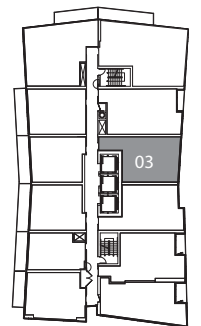
# SUITE 03

ONE BEDROOM + DEN

SUITE 676 S.F.  
TOTAL 676 S.F.



Upper Typical

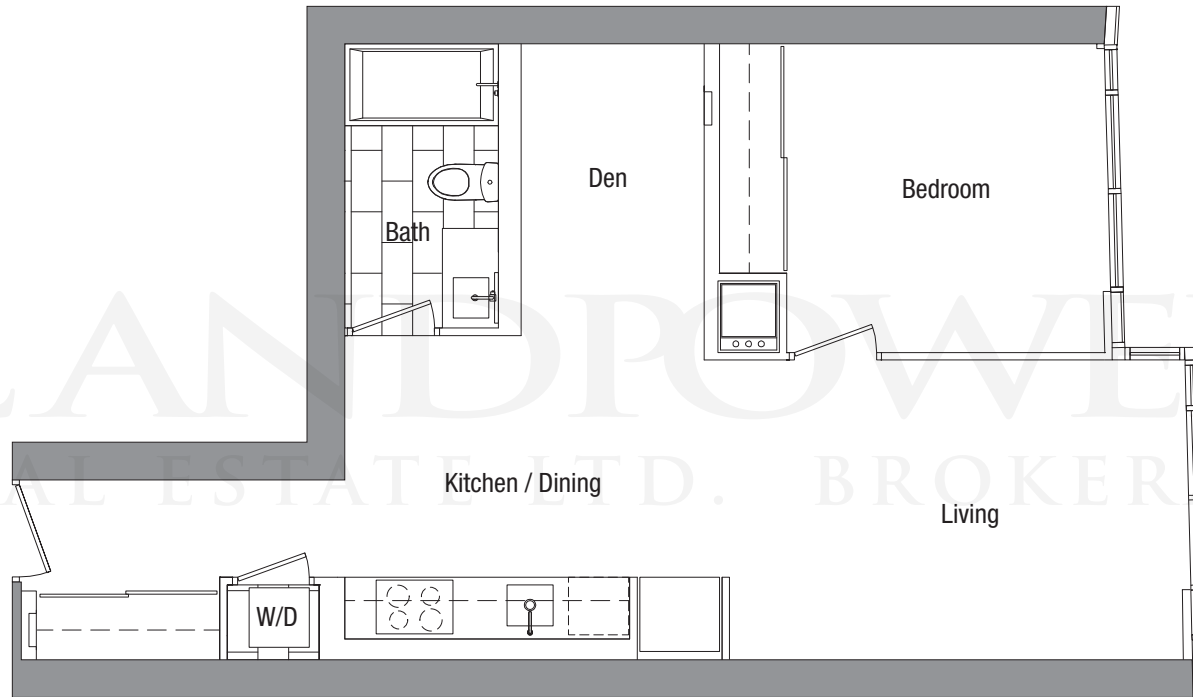


Lower Typical

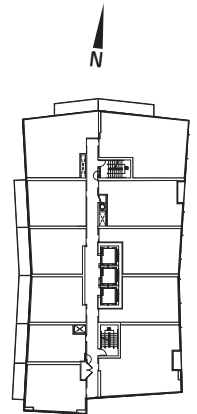
# SUITE 05

ONE BEDROOM + DEN

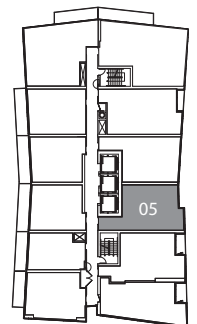
SUITE 698 S.F.  
TOTAL 698 S.F.



LANDPOWER  
REAL ESTATE LTD. BROKERAGE



Upper Typical



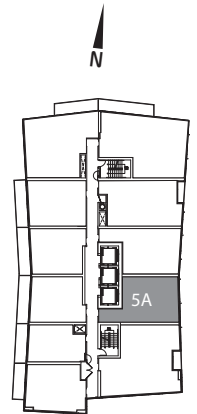
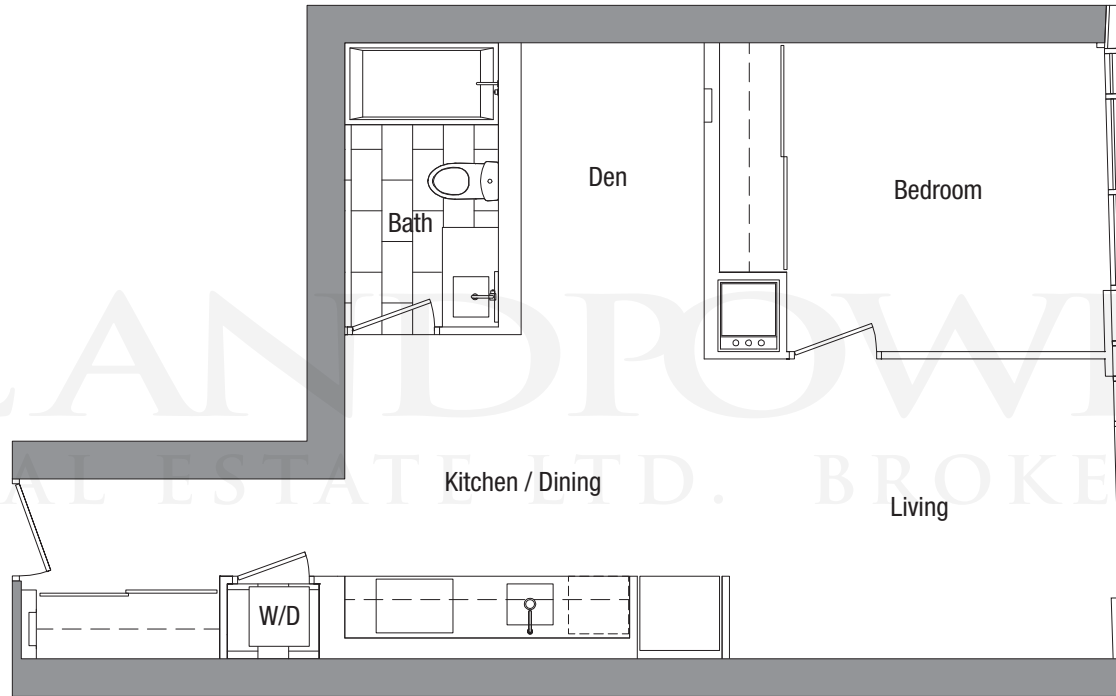
Lower Typical



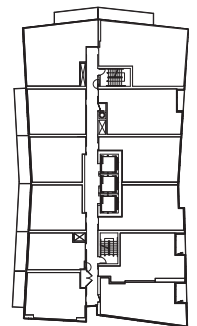
# SUITE 5A

ONE BEDROOM + DEN

SUITE 668 S.F.  
TOTAL 668 S.F.



Upper Typical

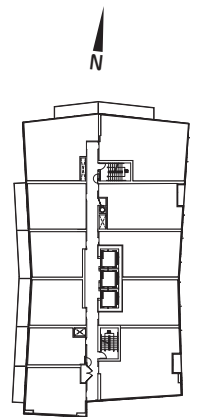
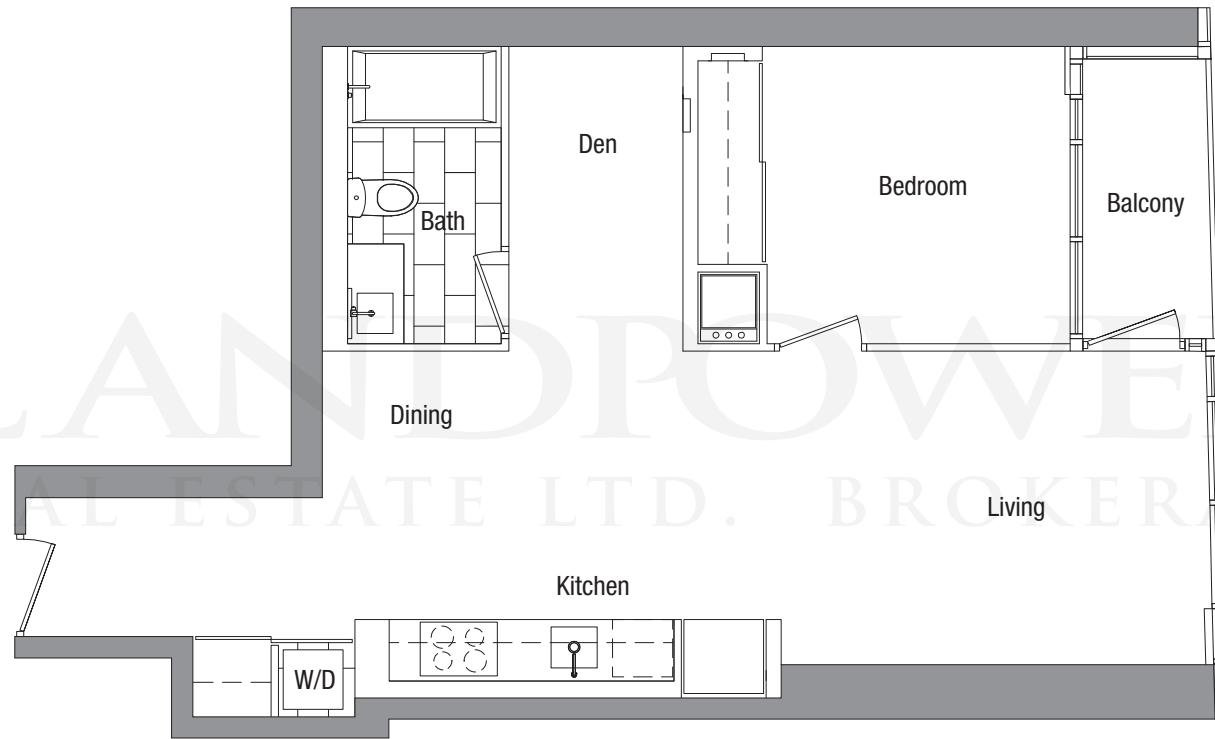


Lower Typical

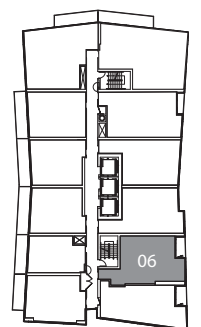
# SUITE 06

ONE BEDROOM + DEN

SUITE 700 S.F.  
BALCONY 38 S.F.  
TOTAL 738 S.F.



Upper Typical



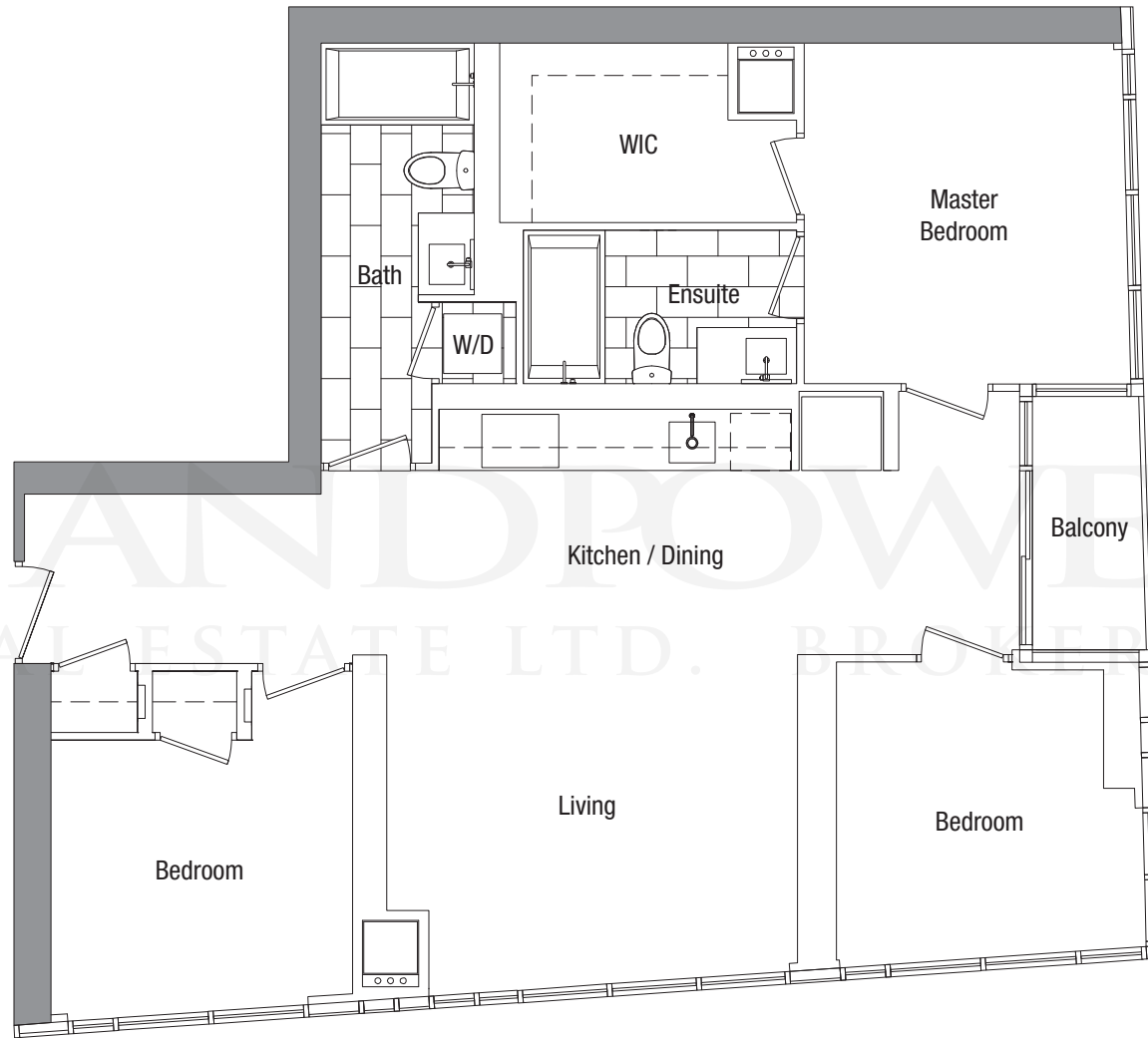
Lower Typical

The developer reserves the right to make minor revisions to interior wall locations and exterior window system. All materials and drawings are approximate. Information is subject to change without notice. Actual square footage may vary from the stated floorplan. E. & O. E.

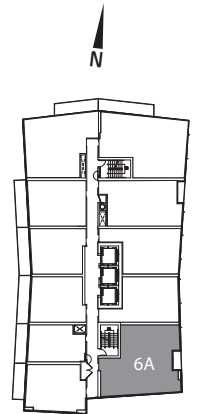
# SUITE 6A

THREE BEDROOM

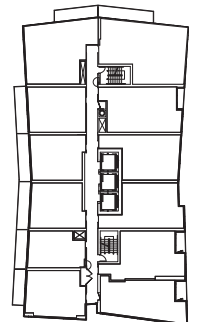
SUITE 1032 S.F.  
BALCONY 31 S.F.  
TOTAL 1063 S.F.



LANDPOWER  
REAL ESTATE LTD. BROKERAGE



Upper Typical

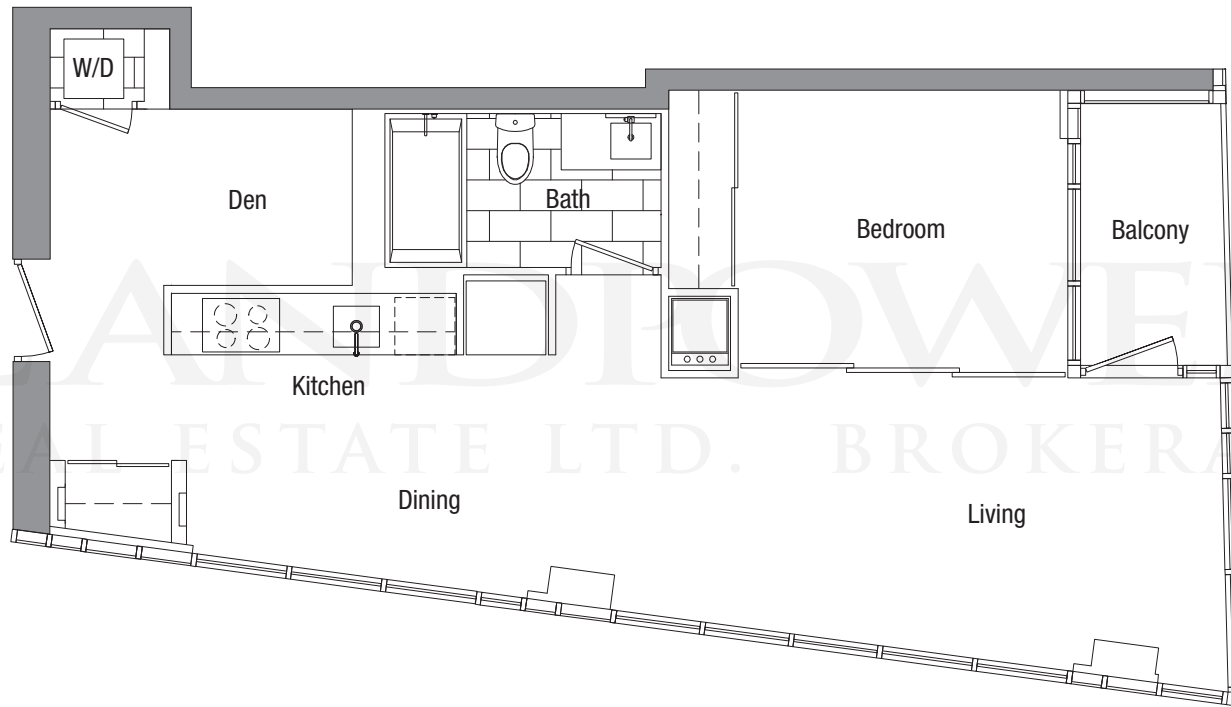


Lower Typical

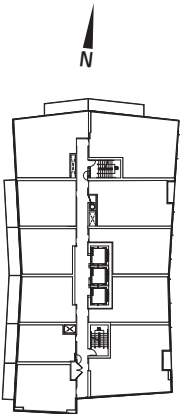
# SUITE 07

ONE BEDROOM + DEN

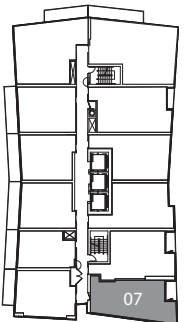
SUITE 683 S.F.  
BALCONY 40 S.F.  
TOTAL 723 S.F.



LANDFLOWER  
REAL ESTATE LTD. BROKERAGE



Upper Typical

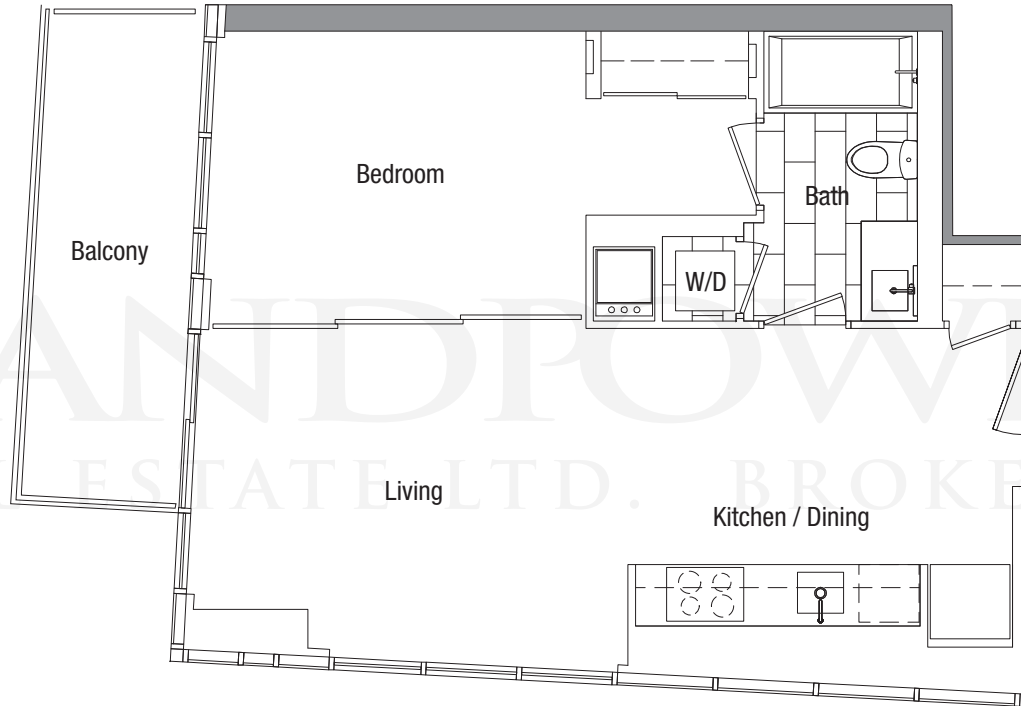


Lower Typical

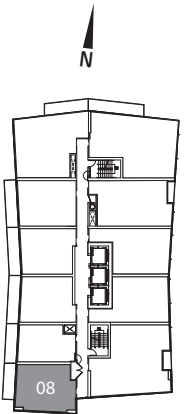
# SUITE 08

ONE BEDROOM

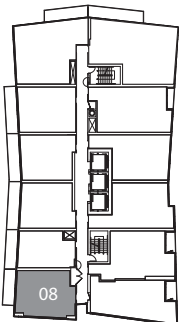
SUITE 590 S.F.  
BALCONY 83 S.F.  
TOTAL 673 S.F.



LANDPOWER  
REAL ESTATE LTD. BROKERAGE



Upper Typical

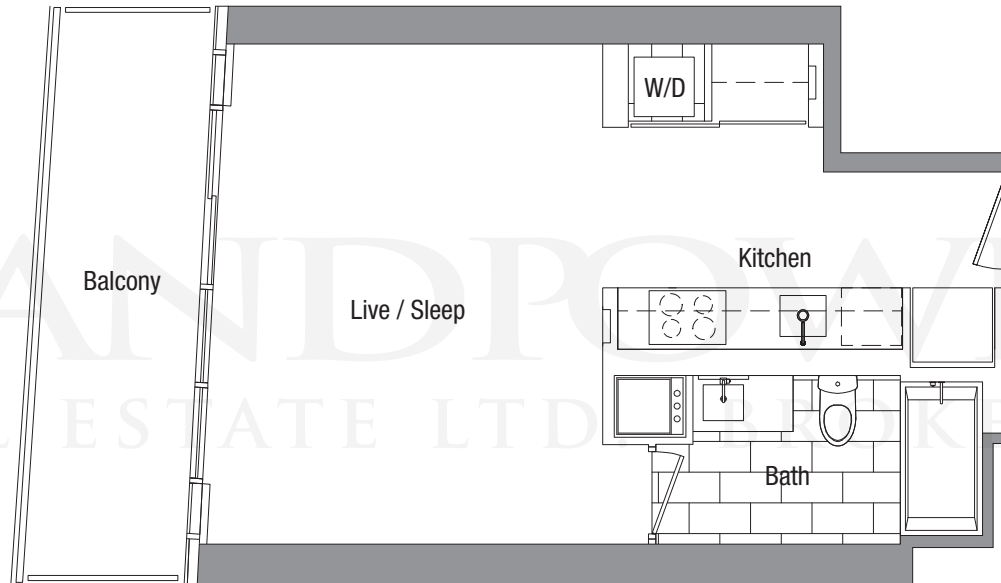


Lower Typical

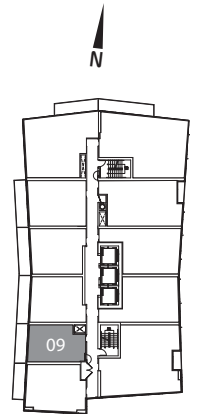
# SUITE 09

BACHELOR

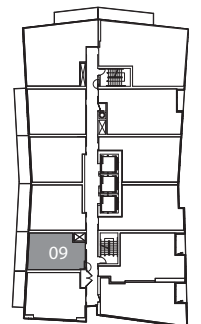
SUITE 443 S.F.  
BALCONY 92 S.F.  
TOTAL 535 S.F.



LANDPOWER  
REAL ESTATE LTD. BROKERAGE



Upper Typical

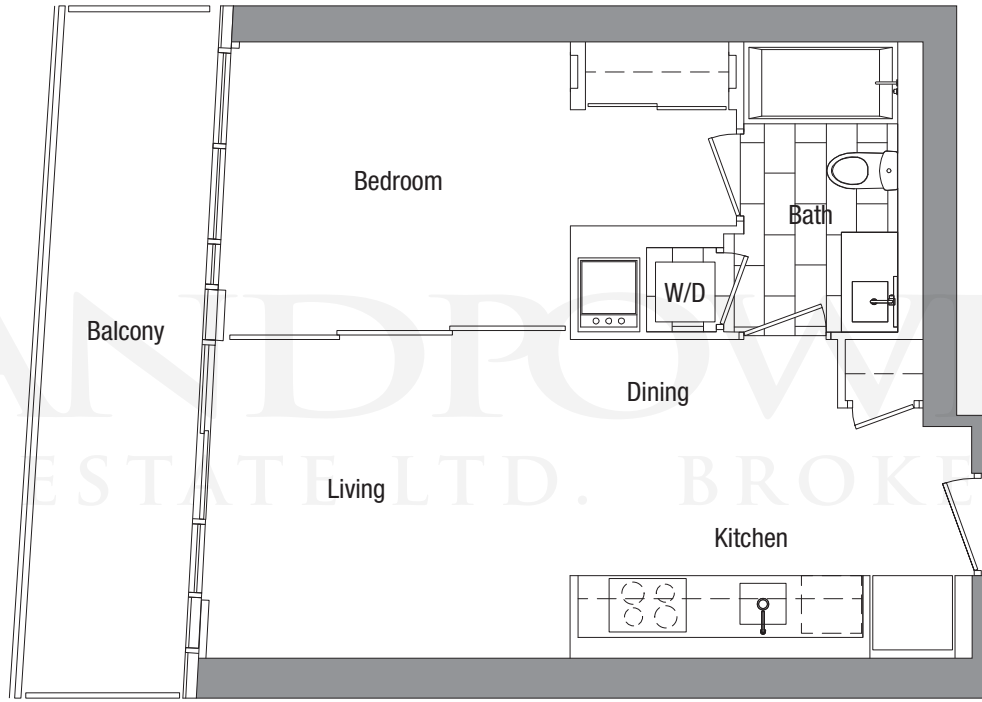


Lower Typical

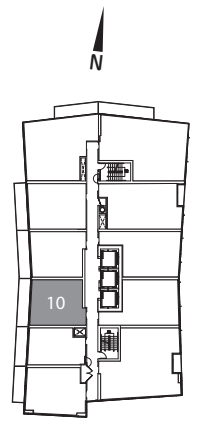
# SUITE 10

ONE BEDROOM

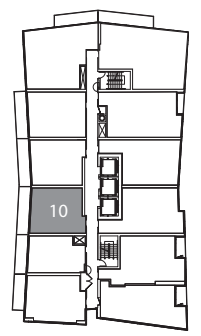
SUITE 540 S.F.  
BALCONY 110 S.F.  
TOTAL 650 S.F.



LANDPROVER  
REAL ESTATE LTD. BROKERAGE



Upper Typical



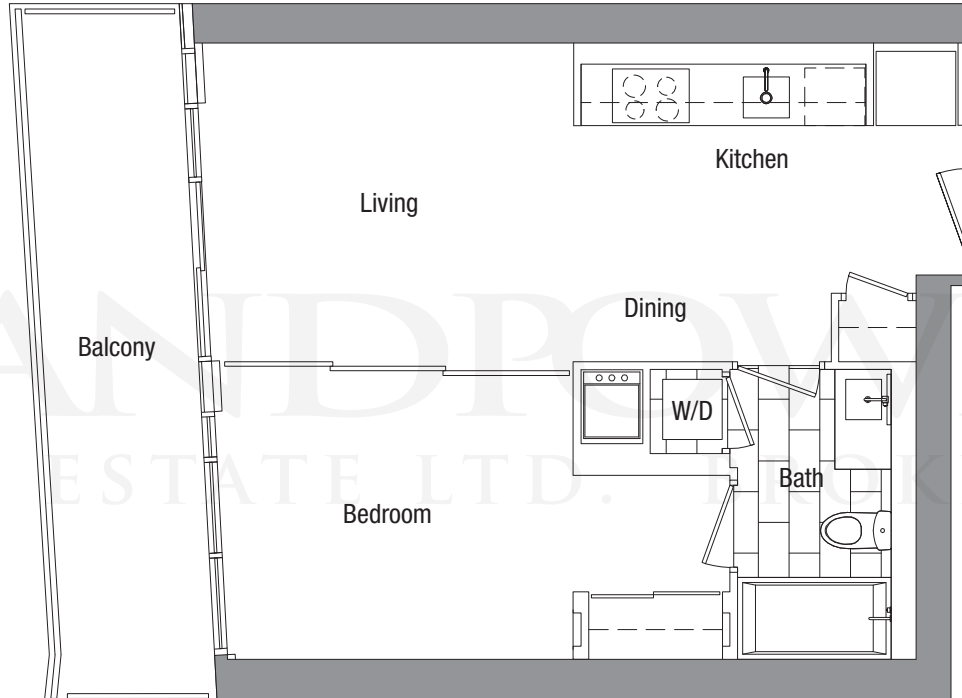
Lower Typical

The developer reserves the right to make minor revisions to interior wall locations and exterior window system. All materials and drawings are approximate. Information is subject to change without notice. Actual square footage may vary from the stated floorplan. E. & O. E.

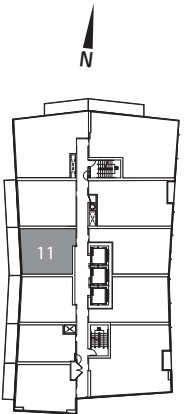
# SUITE 11

ONE BEDROOM

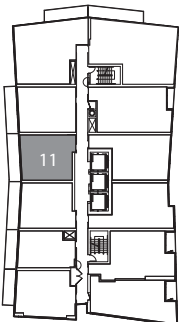
SUITE 535 S.F.  
BALCONY 110 S.F.  
TOTAL 645 S.F.



LANDPOWER  
REAL ESTATE LTD. BROKERAGE



Upper Typical



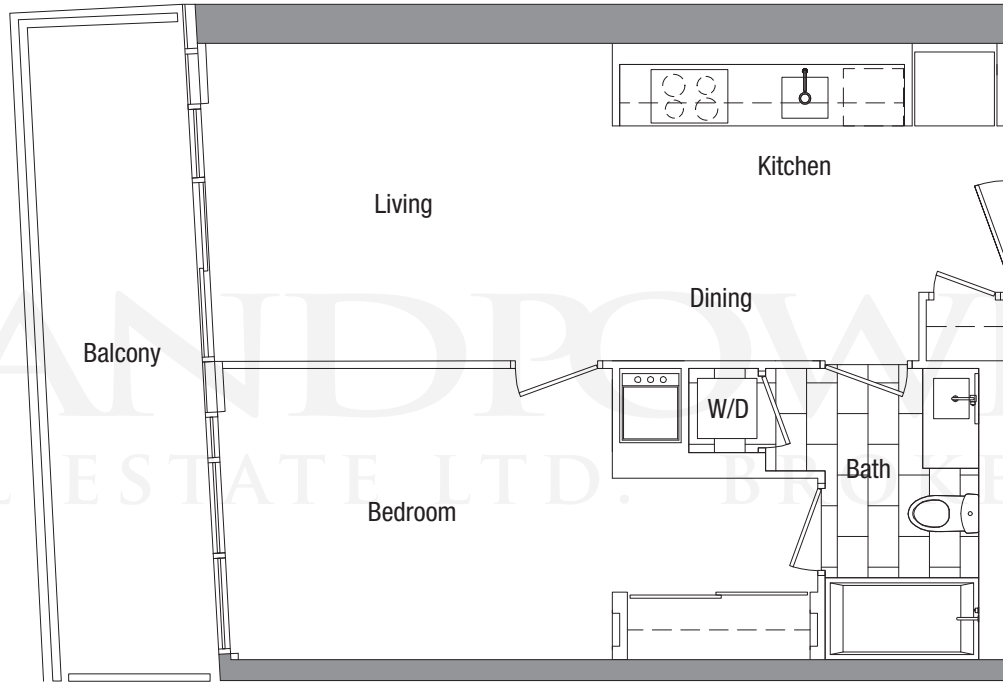
Lower Typical



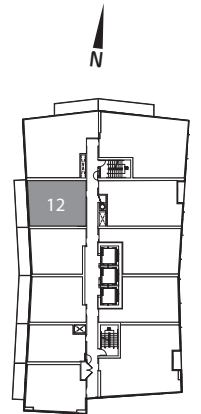
# SUITE 12

ONE BEDROOM

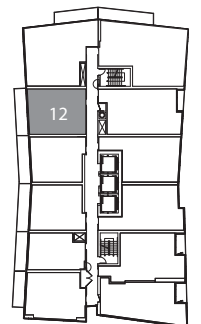
SUITE 572 S.F.  
BALCONY 110 S.F.  
TOTAL 682 S.F.



LANDPOWER  
REAL ESTATE LTD. BROKER



Upper Typical

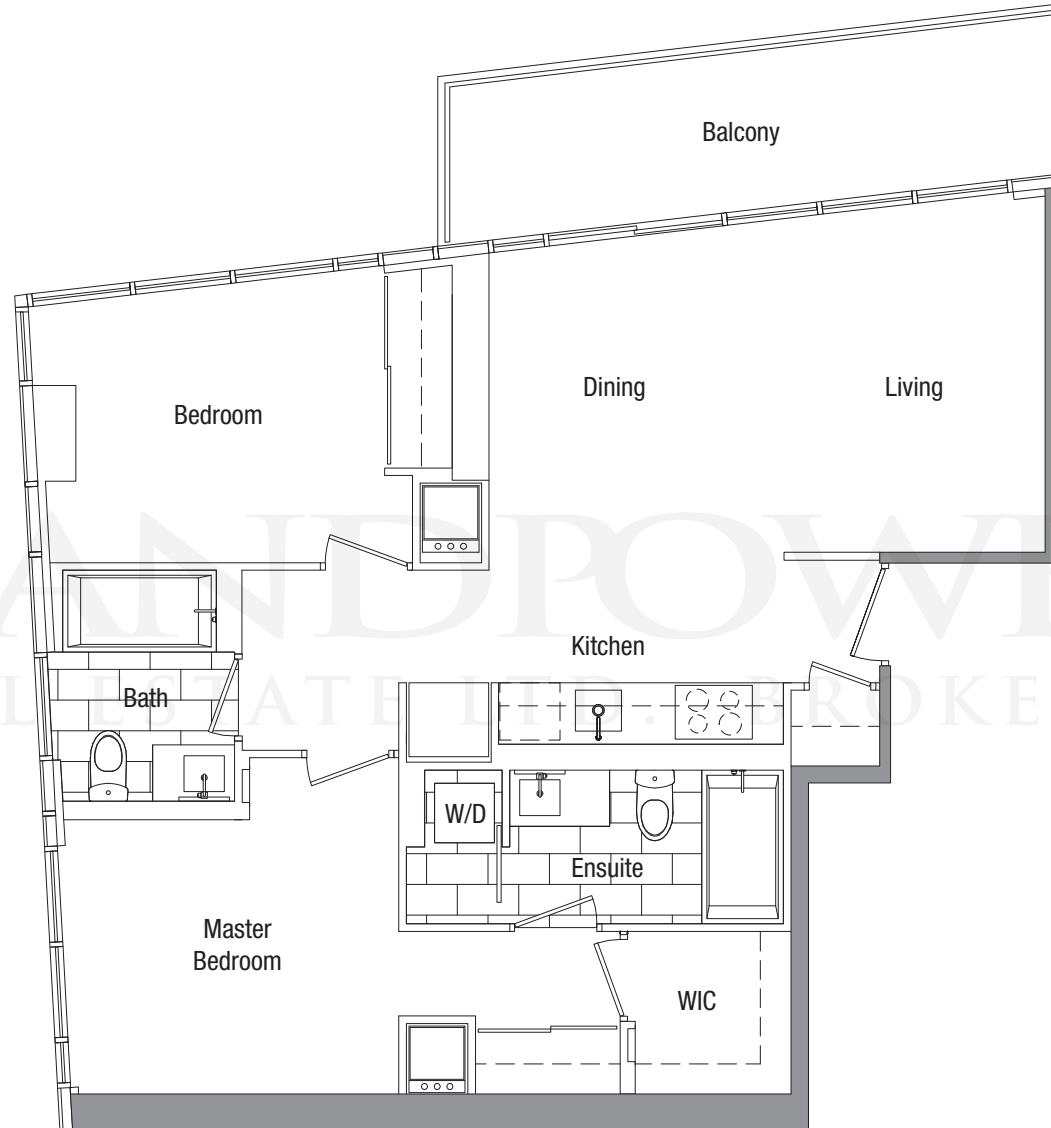


Lower Typical

# SUITE 15

TWO BEDROOM

SUITE 838 S.F.  
BALCONY 100 S.F.  
TOTAL 938 S.F.



LANDPOWER  
REAL ESTATE BROKERAGE

