

LANDPOWER  
REAL ESTATE LTD. BROKERAGE



NORD  
EAST

EXPOCITY

LANDPRO  
REAL ESTATE LTD.

*Welcome to the*  
**NORD**  
**SIDE**

— ..  
Bringing life to the living and  
living to its feet. Introducing  
**NORD EAST**, the newest entry  
into Cortel Group's master-  
planned community at the heart  
of Vaughan's new downtown  
core. The time is now, get in  
touch with your **NORD** side.

# NORD EAST

EXPO CITY



## YOU'VE REACHED YOUR DESTINATION

Both inside and out, **NORD EAST** is positioned to capture attention. This majestic tower forms part of the stunning EXPO City skyline that has redefined what it means to live in Vaughan. Powerful architecture is complemented by lush greenspace and landscape features meticulously incorporated throughout the living space.

Once inside, no detail has been spared or comfort lost. Whether it's a workout, a film, a swim or a yoga session, you need go no further than your home. With interiors boasting a perfect union of style, comfort and beauty, there truly is no place like **NORD EAST**.



**NORD  
EAST**  
EXPO CITY

*Life is better in the*  
**NORD**



When it comes to location, **NORD EAST** is a cut above. It is a self-contained community that offers retail, restaurant and recreation opportunities all perfectly integrated within a luxurious residential setting. Located at Jane and Highway 7 within the booming hub of Downtown Vaughan, **NORD EAST** positions residents at the doorstep of a vibrant, cultured and dynamic life.

With limitless dining, retail and entertaining options just moments away, the stage is set to **xplore** what the **NORD** has to offer you.





**RETAIL**

- 1. Longo's
- 2. Shoppers Drug Mart
- 3. Winners
- 4. Marks
- 5. Toys R Us
- 6. Best Buy
- 7. Fortinos
- 8. Chapters
- 9. Beer Store
- 10. LCBO
- 11. Canadian Tire
- 12. Nations Fresh Food
- 13. Steeles Paint Décor Store
- 14. No Frills
- 15. The Home Depot
- 16. RioCan Colossus Centre
- 17. Costco
- 18. Coppa's Fresh Market
- 19. Bass Pro Shops
- 20. Vaughan Mills Mall
- 21. Lowe's Home Improvement
- 22. Walmart Supercentre
- 23. Home Outfitters
- 24. Ikea
- 25. Riocan Market Place
- 26. Promenade Mall

**DINING + ENTERTAINING**

- 1. McDonald's
- 2. Tim Hortons
- 3. Motorino Enoteca
- 4. Turtle Jack's
- 5. La Paloma Gelateria & Café
- 6. Makimono Japanese
- 7. Starbucks
- 8. Swiss Chalet
- 9. Copacabana Brazilian Steakhouse
- 10. Five Guys
- 11. Freshii
- 12. Baton Rouge Steakhouse
- 13. Caffe Demetre
- 14. Mandarin
- 15. Cora
- 16. Ricci's Pizzeria
- 17. Nove Ristorante
- 18. Alice Fazooli's
- 19. Moxie's Grill & Bar
- 20. Jack Astor's Bar & Grill
- 21. Earls Kitchen + Bar
- 22. Spoon & Fork
- 23. Symposium Cafe Restaurant
- 24. The Keg Steakhouse + Bar
- 25. Nino D'Aversa Bakery
- 26. AllStar Wings & Ribs
- 27. Boston Pizza
- 28. Marcello's Pizzeria
- 29. Grazie Ristorante
- 30. New Generation Sushi & Teppanyaki
- 31. La Molisana Café
- 32. Quesada
- 33. St. Louis Bar & Grill
- 34. Dave & Buster's
- 35. Wendel Clark's Classic Grill & Bar
- 36. Ivy Social Club
- 37. Our Thai Restaurant & Cafe
- 38. Dub Linn Gate Irish Pub
- 39. Luxy Club
- 40. Denny's
- 41. WEGZ Stadium Bar

**RECREATION**

- 1. National Golf Club
- 2. Vaughan Sportsplex
- 3. Colossus Cineplex Theatre
- 4. Launch Golf Centre
- 5. Canada's Wonderland
- 6. Chuck E. Cheeses
- 7. GoodLife Fitness
- 8. Putting Edge
- 9. Black Creek Pioneer Village
- 10. The Sports Village
- 11. Eagles Nest Golf Club

**PARKS**

- 1. Kortright Centre for Conservation
- 2. Boyd Conservation Area
- 3. Weston Downs Park
- 4. Chancellor District Park
- 5. Remberto Navia Sport Fields
- 6. Black Creek Parkland
- 7. Routley Park
- 8. Marita Payne Park
- 9. Sugarbush Heritage Park
- 10. Concord Community Park
- 11. G Ross Lord Park

**EDUCATION**

- 1. St. Clare Catholic E. S.
- 2. Father Bressani Catholic H. S.
- 3. St. Gabriel the Archangel Catholic E. S.
- 4. Maple H. S.
- 5. York University
- 6. James Cardinal McGuigan Catholic H. S.
- 7. Our Lady of Peace Catholic E. S.
- 8. RoyalCrest Academy
- 9. North Hill Private School
- 10. Forest Run P. S.
- 11. St. Elizabeth Catholic H. S.



VAUGHAN MILLS MALL

VAUGHAN'S AMENITIES

XPLORE THE NORD



# Vaughan Metropolitan Centre



# LAND IDEAL THE FUTURE IS NOW REAL ESTATE LTD

A downtown for tomorrow that is growing by the day, the Vaughan Metropolitan Centre has moved from its conception stage to its transformative development.

This master-planned urban core is spread over 442 acres of land and is set to boast 1.5 million square feet of office space and 750,000 square feet of retail space - literally creating an entire city within the City from the ground up. This past year alone has seen over 450,000 square feet of

office space planned or under construction, including 265,000 square foot SmartReit project that includes a state of the art YMCA, as well as a City of Vaughan public library and recreation space.

**NORD EAST** along with EXPO City form part of the residential component of this revolutionary development set to bring the best of all possible worlds - retail, business, transit, dining, recreation and entertainment under one impressive urban epicentre.

RENDERING → REALITY



A big part of living and working is getting there and this is where living at **NORD EAST** shines.

With instant access to subway transportation via the Toronto York Spadina Extension, Viva Rapid Transit and local buses, getting there has never been this easy.

Ideally positioned to utilize the full measure of the transit revolution in Vaughan, whether it's work, school or play you are always only a few stops away at **NORD EAST**.

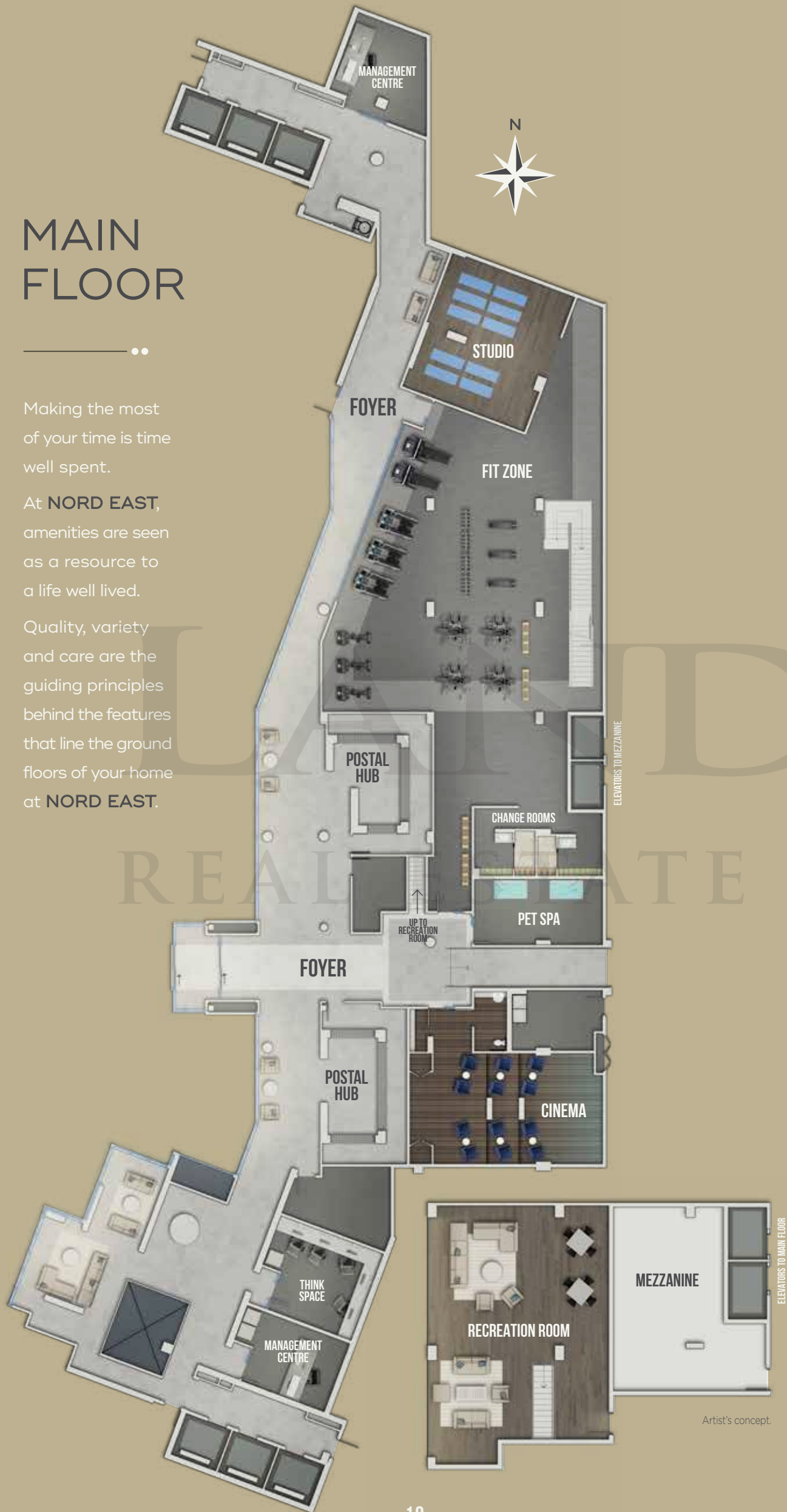


# MAIN FLOOR

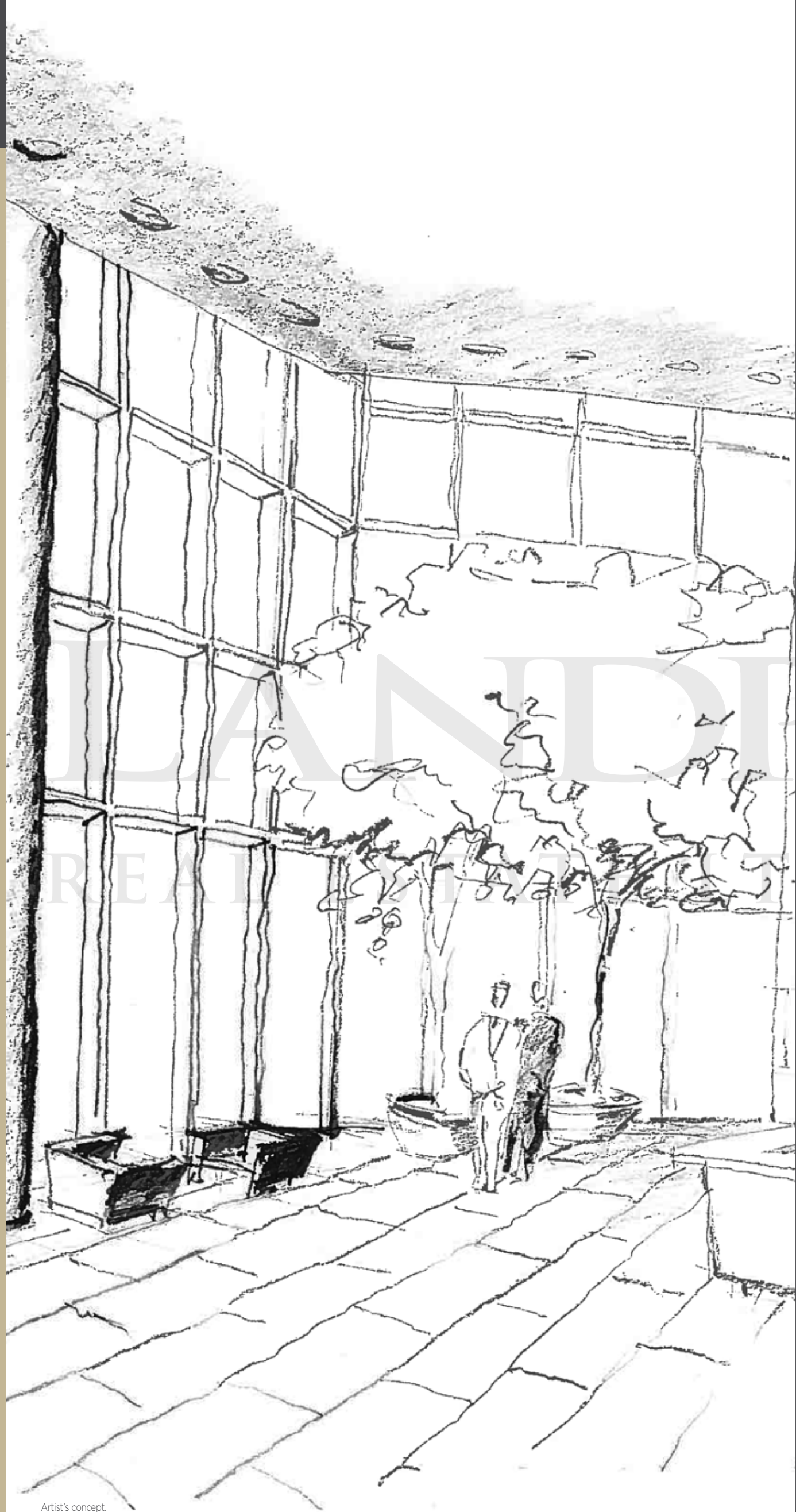
Making the most of your time is time well spent.

At **NORD EAST**, amenities are seen as a resource to a life well lived.

Quality, variety and care are the guiding principles behind the features that line the ground floors of your home at **NORD EAST**.



# SECOND FLOOR



Artist's concept.

NORD EAST

# Features + FINISHES

## SUITE FINISHES

- All suites have approximately 9' ceilings save and except laundry room, bathrooms, and bulkheads
- Individual climate control of centralized heating and air-conditioning in each suite
- Solid core entry door with quality finish hardware
- Classic interior doors with casing and baseboards
- All trim painted in off-white semi-gloss
- Semi-gloss off-white paint throughout Kitchen, Laundry, Powder Room and Bathrooms
- Contemporary brushed hardware on interior doors
- Laminate flooring with acoustic under-pad layer for Foyer, Kitchen, Bedrooms, Living Room and Den
- Ceramic tile from builder's samples for Laundry and Bathrooms
- Smooth ceilings in all areas
- Sliding/Swing glass doors to terraces or balcony as per plans
- Terraces and Patios finished in both hard and soft landscaping per plans
- Balcony and Terrace railings are composed of glass with aluminum railings/guards

## KITCHEN + LAUNDRY

- Contemporary Kitchen cabinetry in a variety of builder's samples
- Soft close drawers
- Brushed finished hardware
- Stainless steel sink with chrome finish and contemporary single lever faucet as per plan
- Premium stainless steel standard appliance builder package (dishwasher, microwave/hood, fridge, stove)
- Space efficient washer and dryer in suite (white)
- Exterior vented exhaust hood
- Choice of a variety of designer granite or quartz Kitchen countertop finishes
- Ceramic backsplash
- Electrical outlets installed at counter level for countertop appliances

## BATHROOM

- Vanity mirror with contemporary finished faucet set
- Choice of quality cabinets and latest decor
- Granite or quartz countertops from builder's samples
- Choice of ceramic tiles from builder's samples
- Accessory package includes towel bar, toilet paper holder where possible
- 5 foot, deep soaker tub or shower as per plan
- Ceramic tile to ceiling in tub enclosure/shower stall as per plan
- Temperature controlled pressure balance valve in all showers
- Privacy lock
- White bathroom fixtures throughout
- Exterior vented exhaust fans

## ELECTRICAL

- Service panel with circuit breakers and copper wiring throughout
- Prewired for cable television in Living Room, Master Bedroom and Second Bedroom or Den as per plan
- Smoke and carbon monoxide detectors as per code
- Decora-style switches and receptacles
- Provision for high speed internet access available
- Telephone outlets in Living Room, Bedroom(s) and Dens as per plan
- Enterphone system for Garage and Lobby
- Controlled access security system with enterphone facilities at the Building Entrance and Parking Lobby, with in-suite monitoring capabilities
- 24-hour video surveillance (DVR) monitoring system for Lobby
- Pre-wired for coded suite intrusion alarm system (ground floor units only)

## Notes

- Finishing specifications are from the vendor's samples.
- Floors and specific finishes will depend on vendor's packages as selected. The purchaser shall be requested to meet with the vendor or its representative to select certain colours and materials from the vendor's finish packages. The purchaser agrees to meet with the vendor for such purpose in accordance with the terms of the agreement.
- Colour, texture and appearance of features and finishes installed in the suite may vary from vendor's samples as a result of normal manufacturing and installation processes.
- All feature and finishes subject to change without notice E. & O. E.





NORD EAST

# Tower Suites

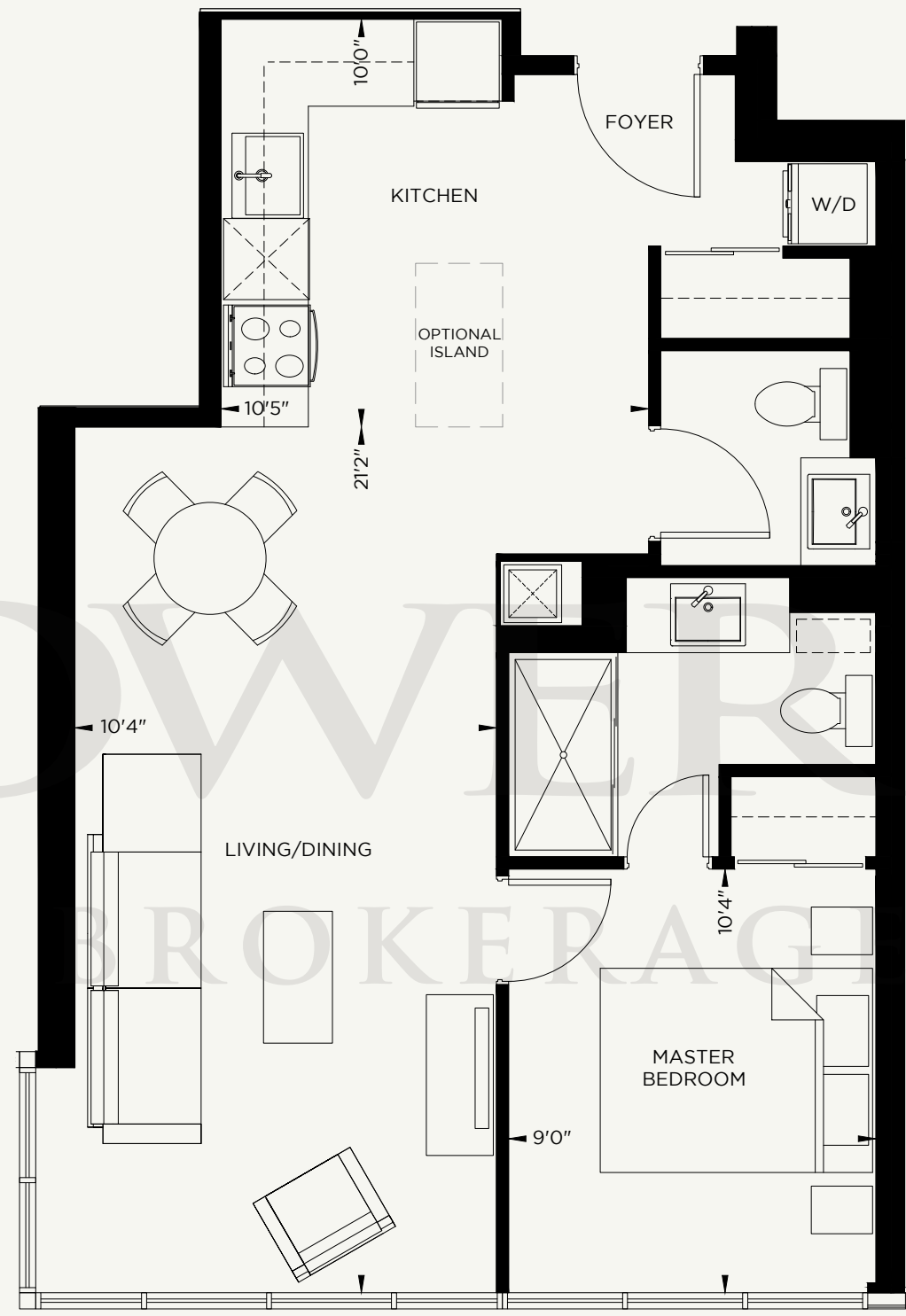
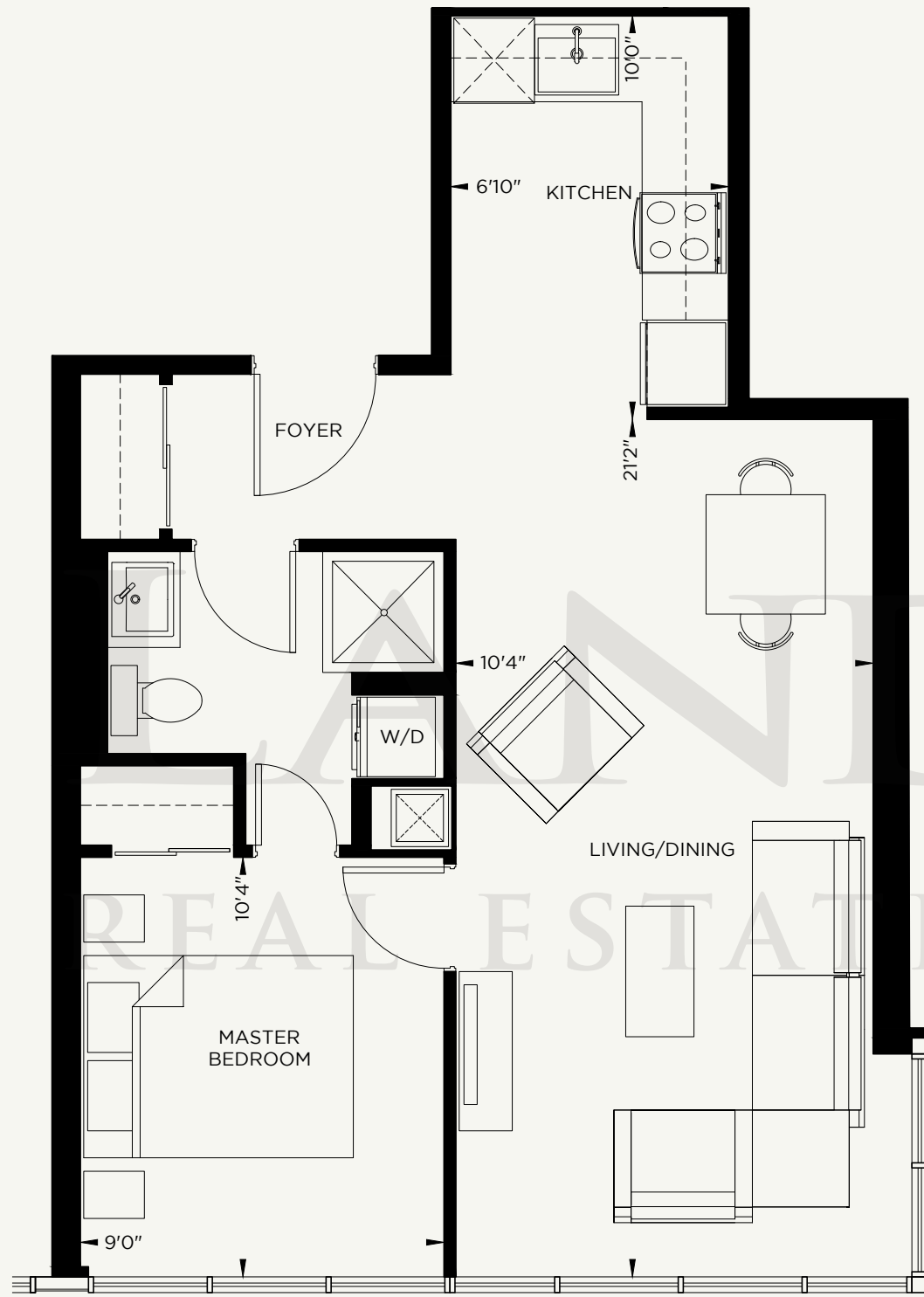


# TERMINI | ONE BEDROOM

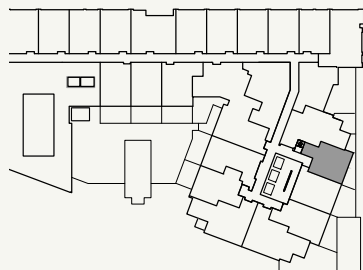
SUITE 539 SQ.FT.

# ONE BEDROOM | FRONTENAC

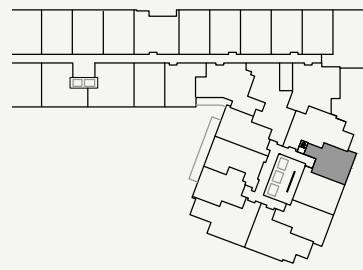
SUITE 600 SQ.FT.



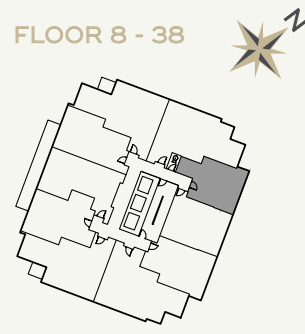
FLOOR 3



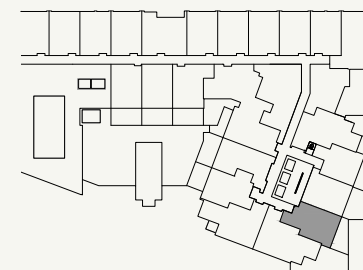
FLOOR 4 - 7



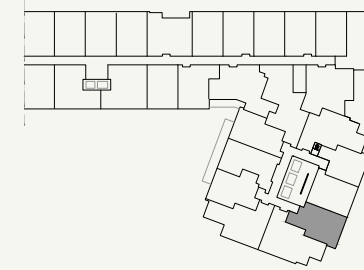
FLOOR 8 - 38



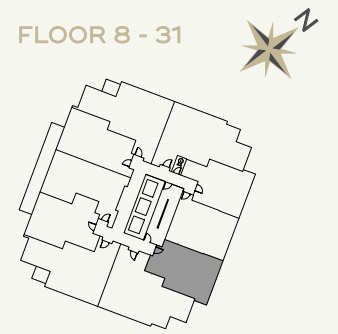
FLOOR 3



FLOOR 4 - 7



FLOOR 8 - 31



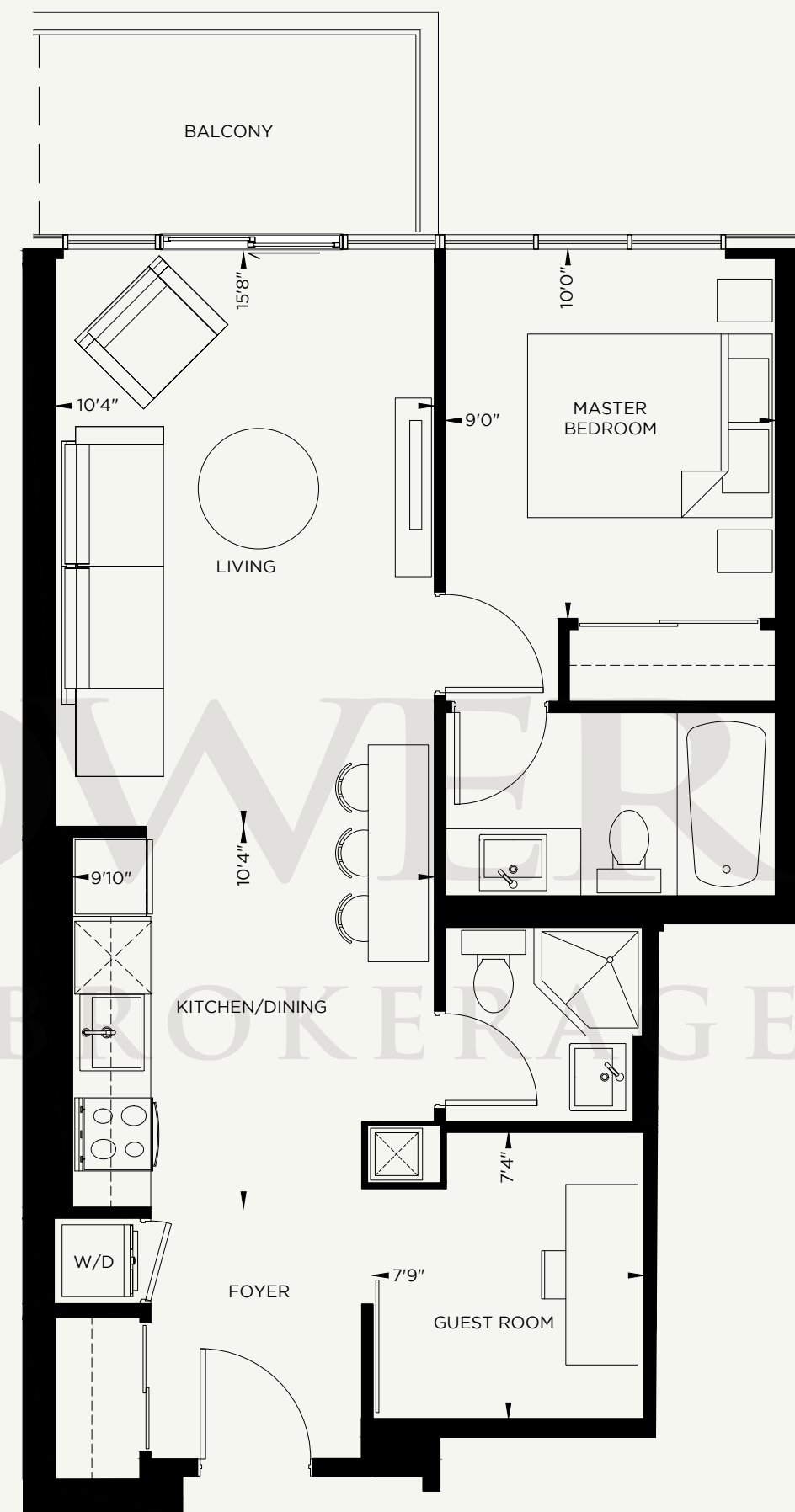
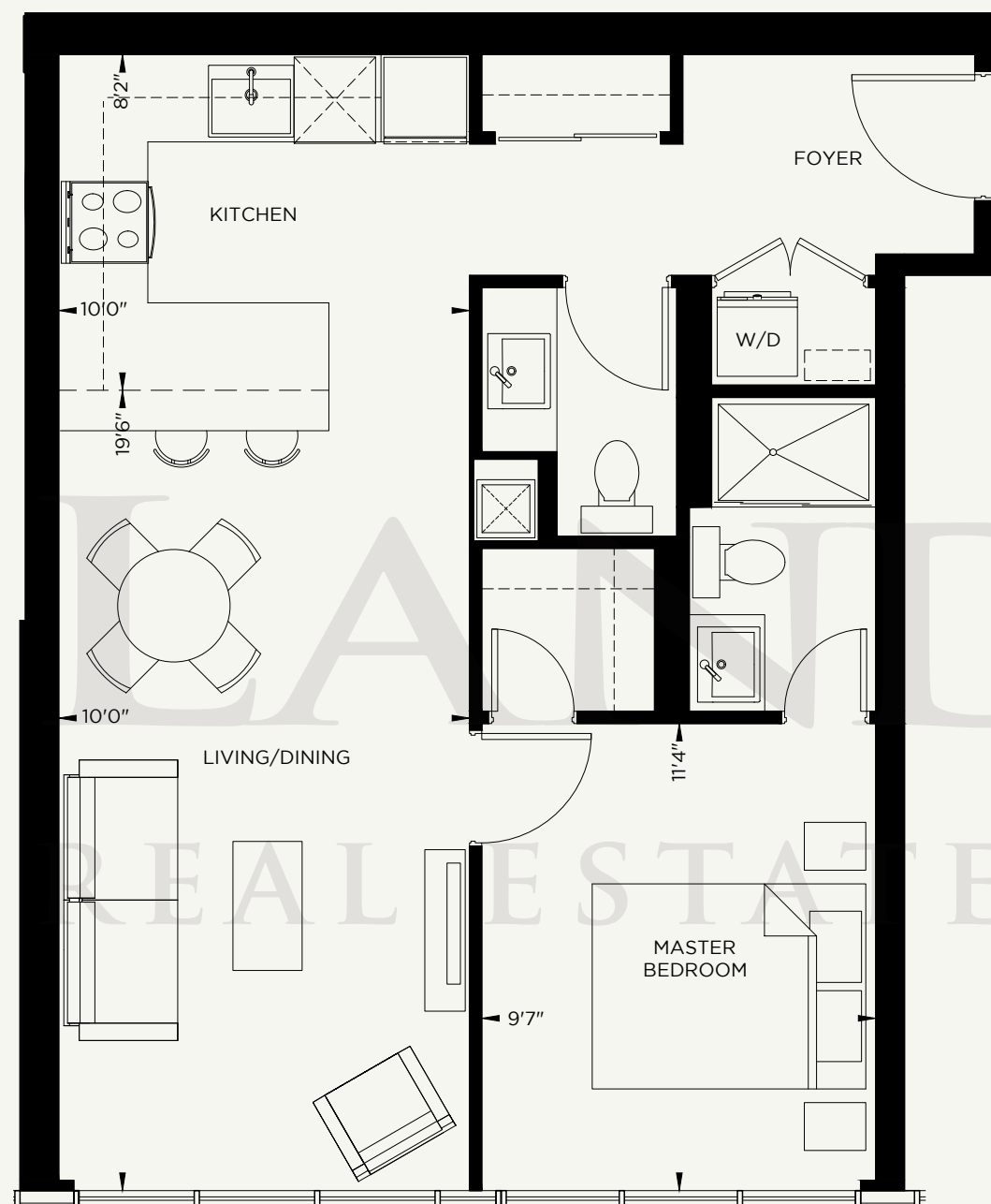


# GINZA | ONE BEDROOM

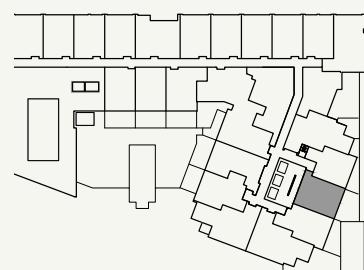
SUITE 606 SQ.FT.

# ONE BEDROOM + DEN | LYON

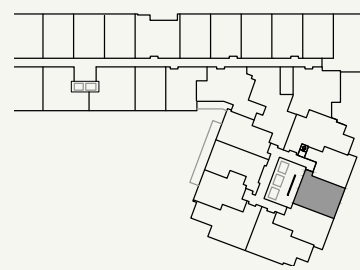
SUITE 631 SQ.FT. / BALCONY 56 SQ.FT. / TOTAL 687 SQ.FT.



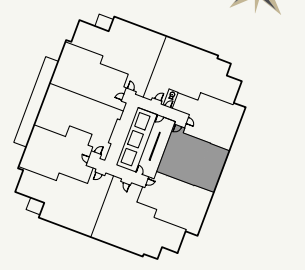
FLOOR 3



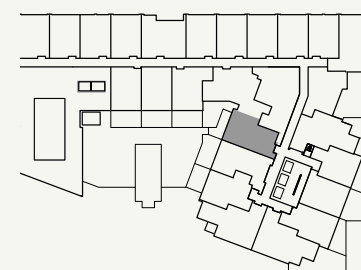
FLOOR 4 - 7



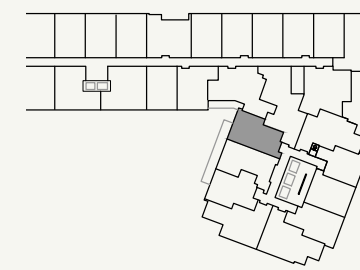
FLOOR 8 - 31



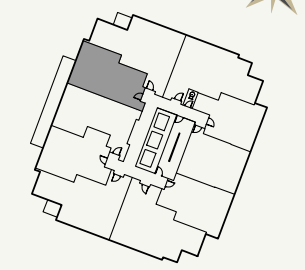
FLOOR 3



FLOOR 4 - 7



FLOOR 8 - 38





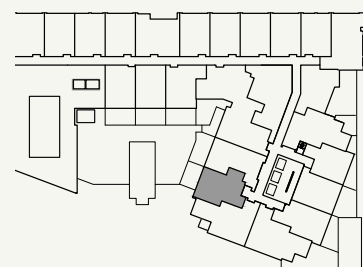
# QUEENS

ONE BEDROOM  
+ DEN

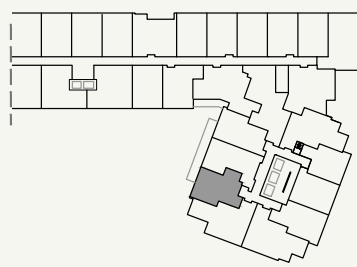
SUITE 642 SQ.FT. / BALCONY 56 SQ.FT. / TOTAL 698 SQ.FT.



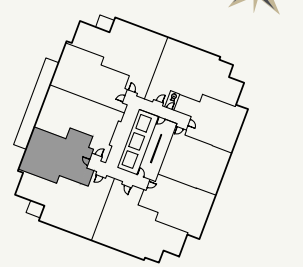
FLOOR 3



FLOOR 4 - 7



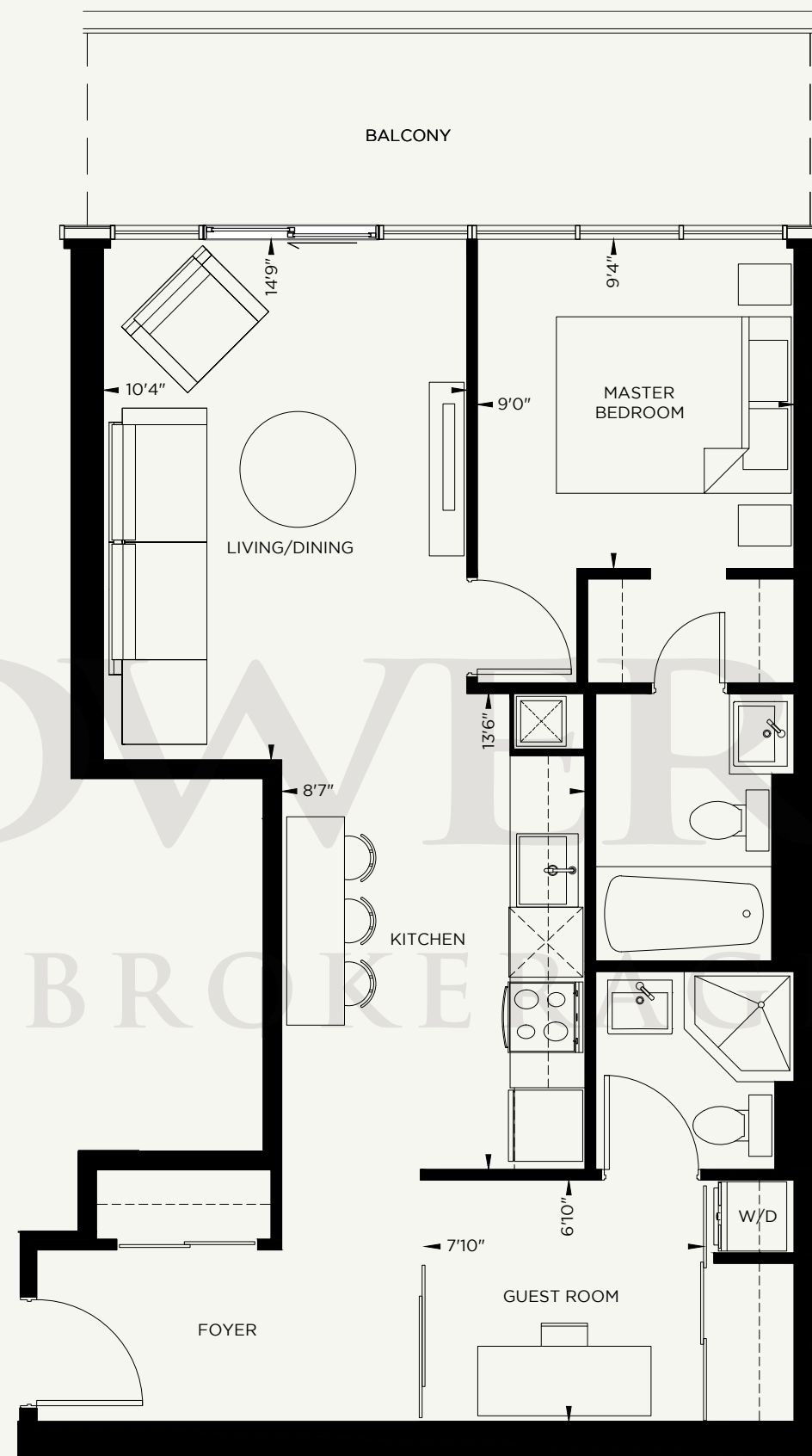
FLOOR 8 - 38



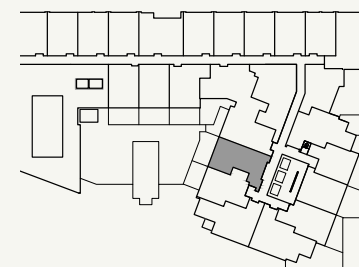
ONE BEDROOM  
+ DEN

# BRIXTON

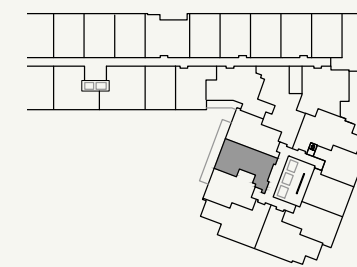
SUITE 648 SQ.FT. / BALCONY 111 SQ.FT. / TOTAL 759 SQ.FT.



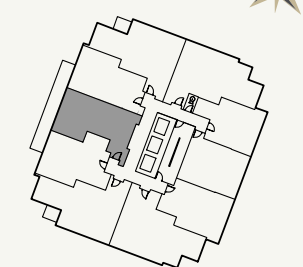
FLOOR 3



FLOOR 4 - 7



FLOOR 8 - 38





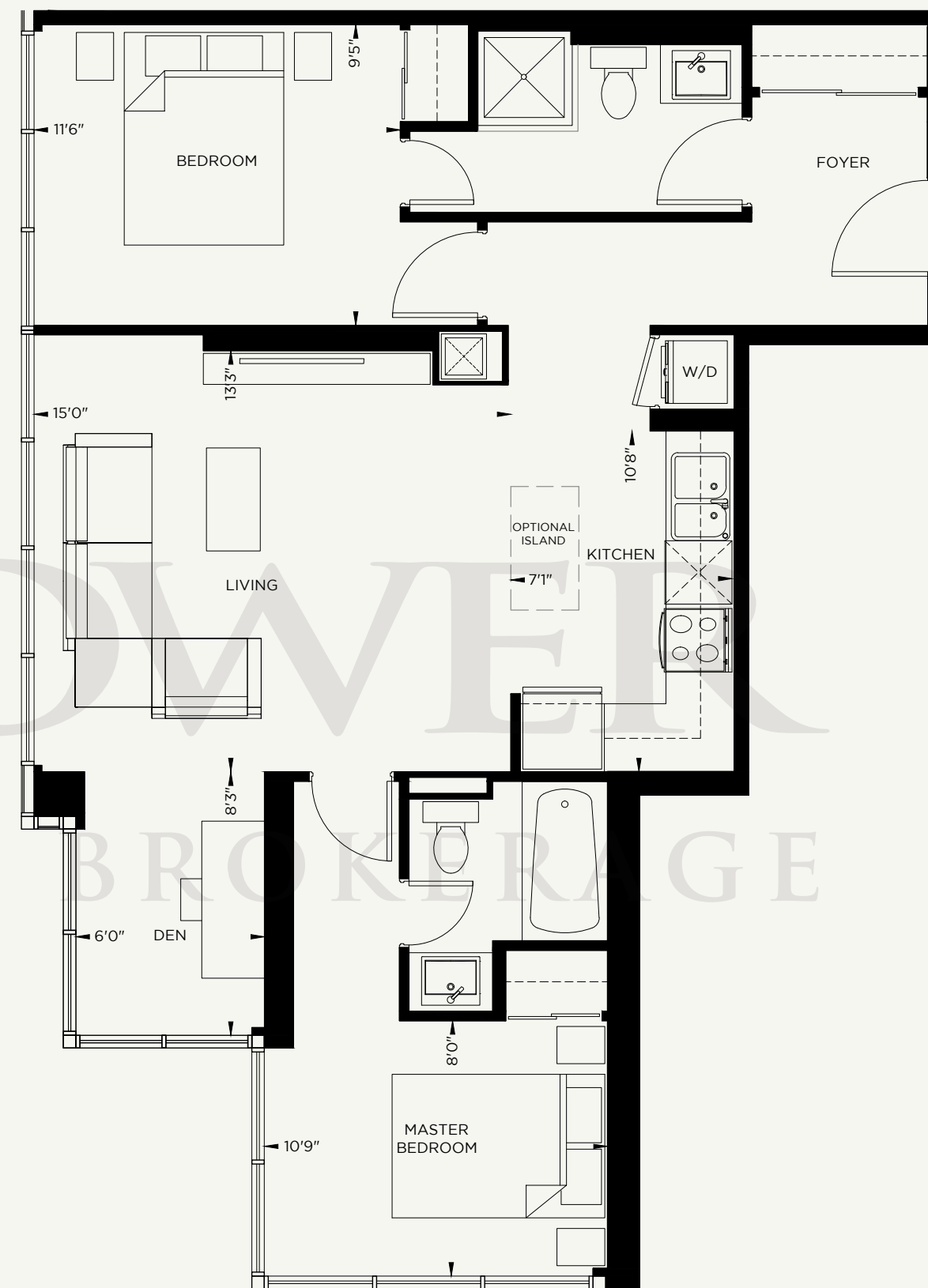
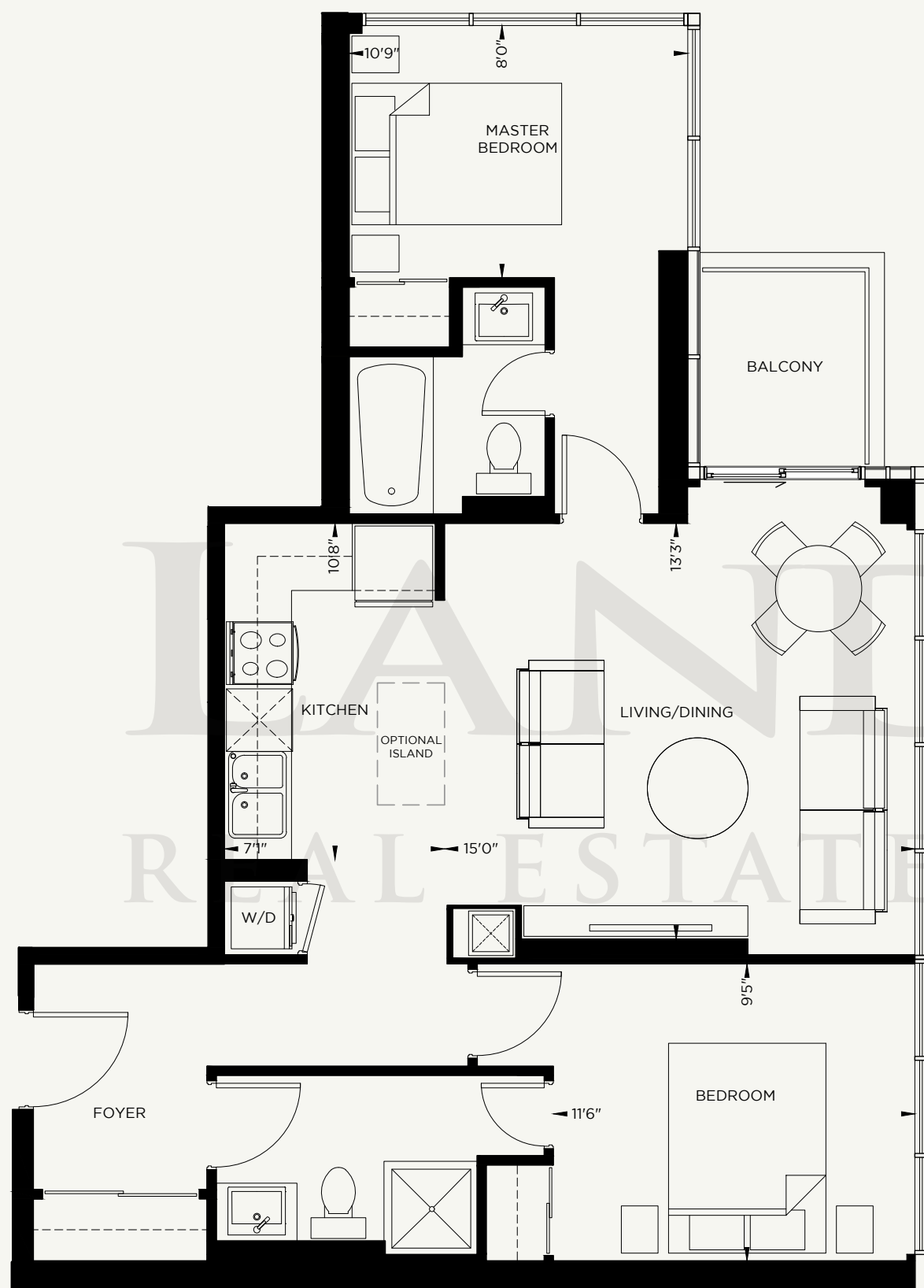
# ESSEX | TWO BEDROOM

SUITE 805 SQ.FT. / BALCONY 32 SQ.FT. / TOTAL 837 SQ.FT.

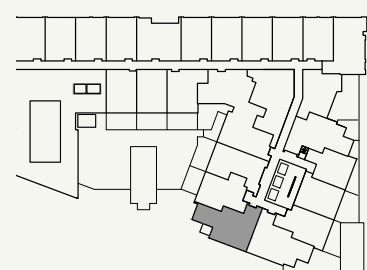
TWO BEDROOM + DEN

# LEXINGTON

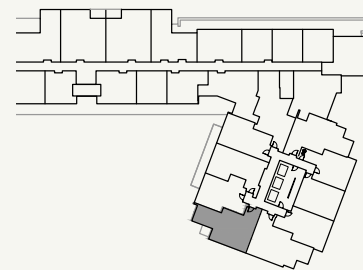
SUITE 844 SQ.FT.



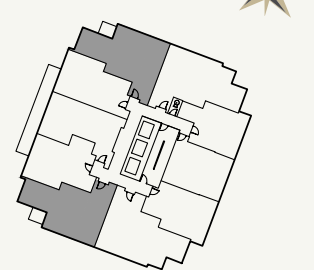
FLOOR 3



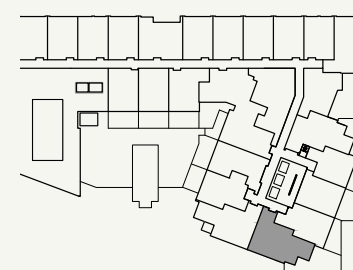
FLOOR 4 - 7



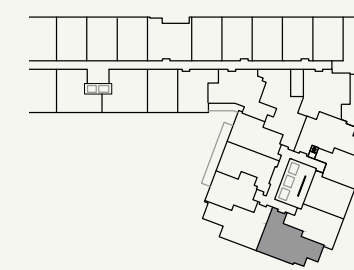
FLOOR 9 - 38



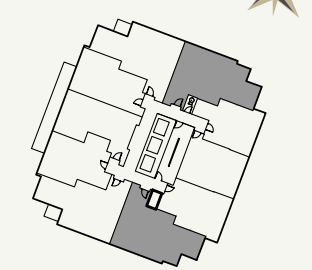
FLOOR 3



FLOOR 4 - 7



FLOOR 9 - 38



Dimensions, specifications, layouts, location of materials and fixtures, tile floor patterns and architectural detailing (including window size and location and door size, location and swing) are approximate only and are subject to change without notice. Actual usable floor space varies from stated floor area. Orientation of suite may be reversed and Purchaser agrees to accept same. Balconies, terraces and patios are exclusive use common elements shown for display purposes only and location and size are subject to change without notice. Illustrations are artist's concept only. E. & O. E.

Dimensions, specifications, layouts, location of materials and fixtures, tile floor patterns and architectural detailing (including window size and location and door size, location and swing) are approximate only and are subject to change without notice. Actual usable floor space varies from stated floor area. Orientation of suite may be reversed and Purchaser agrees to accept same. Balconies, terraces and patios are exclusive use common elements shown for display purposes only and location and size are subject to change without notice. Illustrations are artist's concept only. E. & O. E.



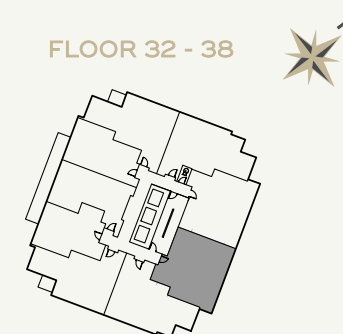
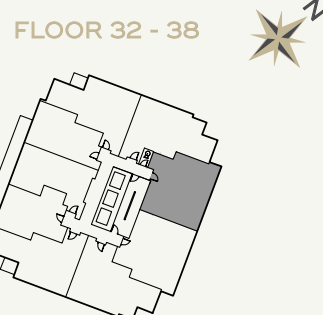
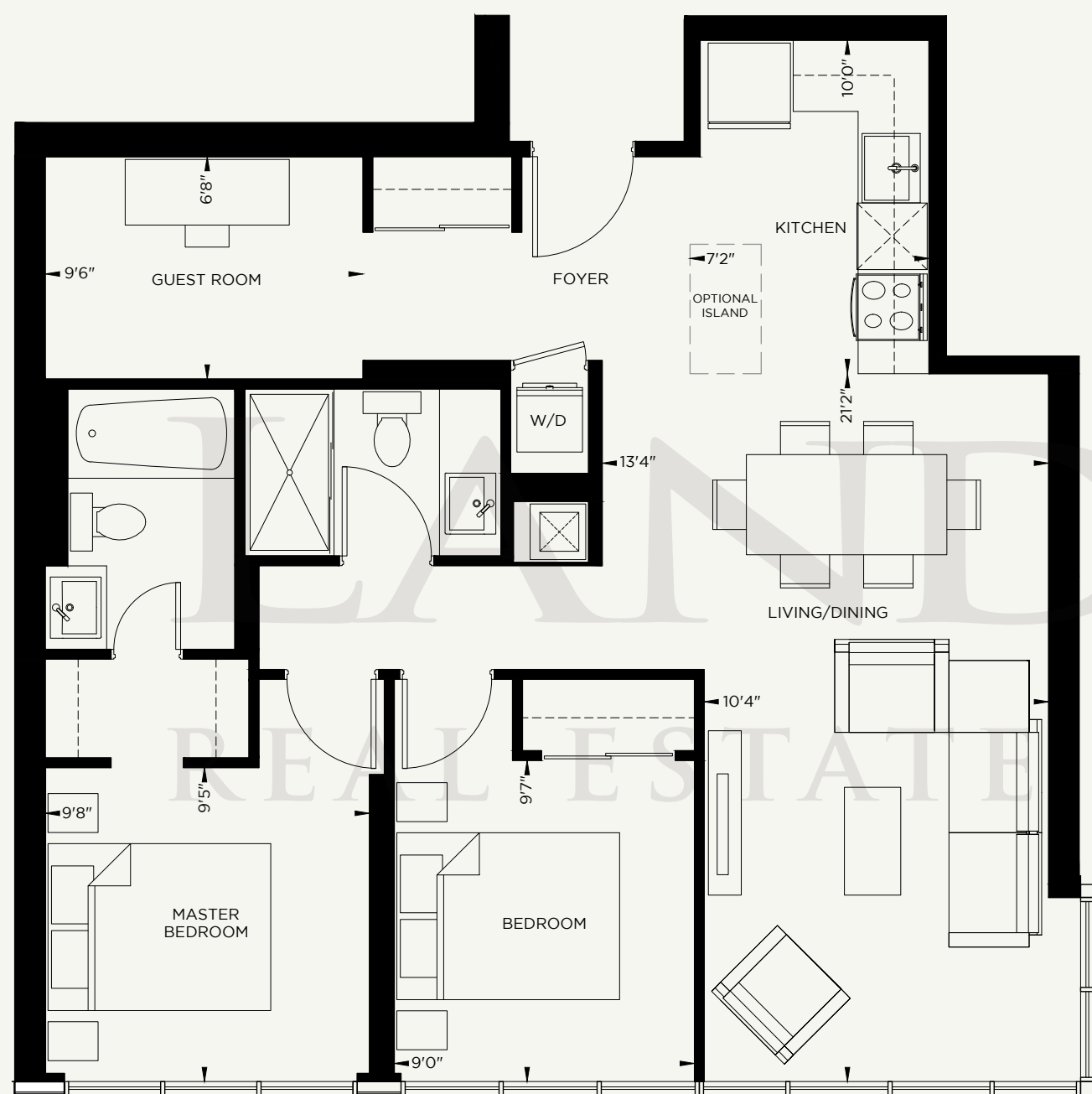
# NAKHEEL | TWO BEDROOM + DEN

SUITE 885 SQ.FT.

# TWO BEDROOM + DEN

# O'HARE

SUITE 894 SQ.FT.



# BUILDING A HISTORY, A FUTURE.

We don't just build houses. We create what we call complete communities outstanding, livable neighbourhoods with the recreation, green space, shopping, services and transportation we all need. Somewhere you and your family can easily and happily grow, now and into the future.

We are responsible to the environment. While we look towards the future, it's important to us that we respect our history. A collection of buildings doesn't make a community - it's the people that help it grow that really matter.

Our dedication to these beliefs has earned us first-rate reputation in the industry, and among the people who live in our communities.



CORTEL GROUP

LANDPOWER  
REAL ESTATE LTD. BROKERAGE

LANDPOWER  
COME TO THE NORD SIDE  
REAL ESTATE LTD. BROKERAGE



CORTEL GROUP

| [NORDCONDOS.CA](http://NORDCONDOS.CA)