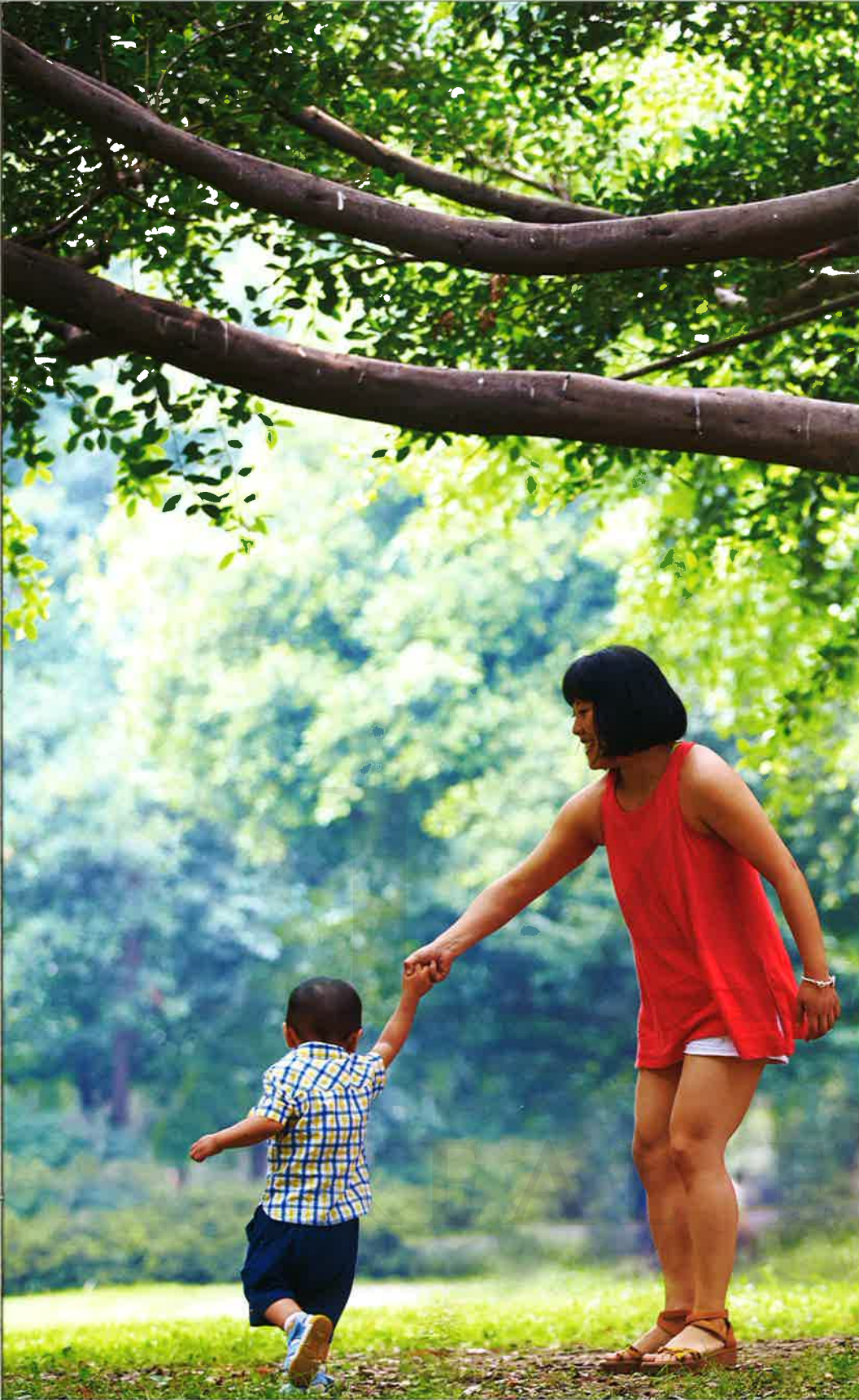


2-STOREY
TOWNHOMES





HOME



A proud history of
**PROGRESSIVE
DESIGN**



LEGACY

The largest private builder in North America, Mattamy already holds a legacy in Richmond Hill. From the beginning, and now after 70,000 homes in hundreds of communities, we still listen to our homeowners – past and prospective – so that we may continue to create places in which people love to live. From establishing a community to individual home design, we continually incorporate what we've learned for the benefit of people who appreciate higher standards.

ENDURING



SPACE



Raising the standards of

FINE LIVING IN RICHMOND HILL

Our homes maximize livable space. And our neighbourhoods are fashioned to be real communities, where people can gather and participate in the beautiful spaces in which they live. Richmond Green is our latest evolution – a lively, livable community for every person and every family, every season of the year. Everything about Richmond Green is created to augment the region. The community encourages you to decide upon your ideal style of living, offering an exquisite mix of Executive Townhomes and Detached Designs. The streetscapes will be graced by splendid exteriors of stone, brick, and stucco. Inside, Mattamy designers have fashioned fine interiors for enduring touches of luxury.

TE LTD.

BROKERAGE

LIMITLESS



Exceptional facilities for the

ENJOYMENT OF ANY FAMILY

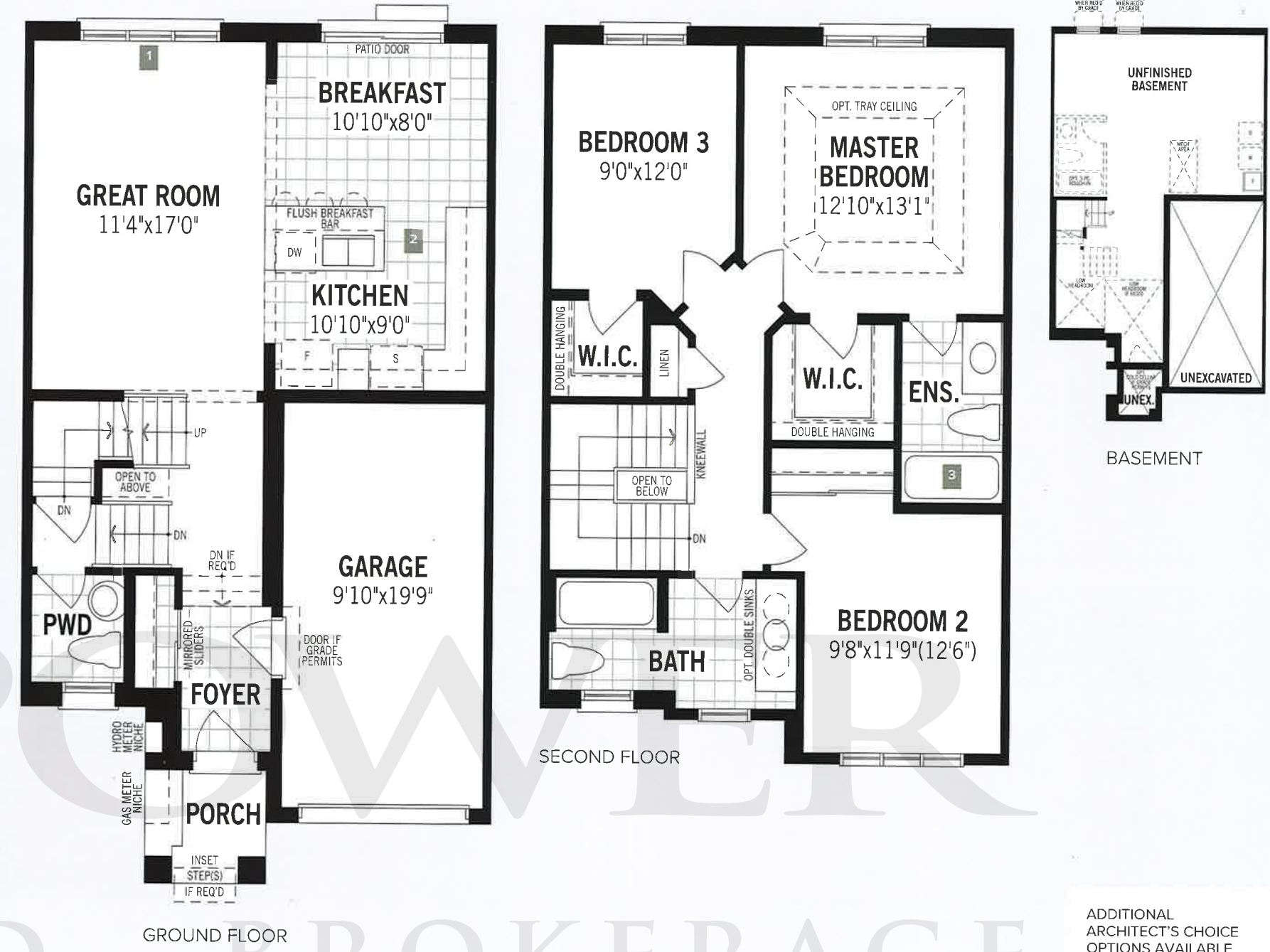
What an extraordinary place to raise a family. Bordering on the Richmond Green Community Centre, our new Mattamy neighbourhood has immediate access to a spectacular range of facilities. There's almost limitless room to play on seven baseball diamonds, a waterplay splash pad, outdoor amphitheatre, a state-of-the-art skateboard park facility and a 250-metre landscaped inline skating trail that transforms in winter to an artificial ice-skating surface. Even a simple walk or bicycle ride is enhanced by a natural, protected heritage landscape to the north, and smaller parks and ponds within the community itself. Naturally, access to major thoroughfares like Highway 404 is immediate and exceptional retail shopping, restaurants, and cinemas are also conveniently at-hand.

PLAY

2-STOREY
TOWNHOMES

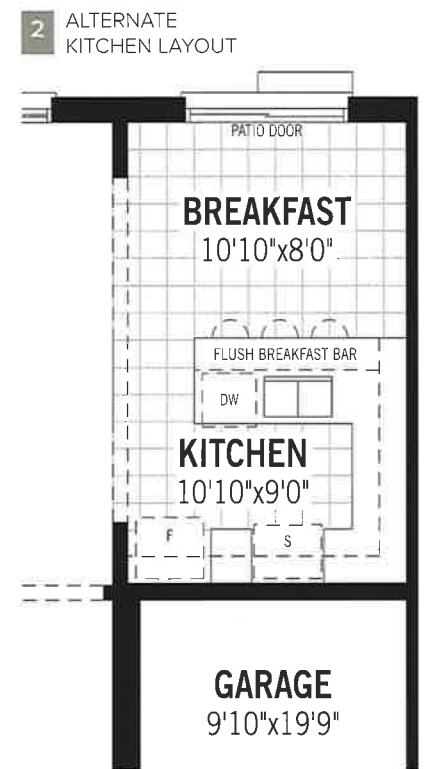
THE BLYTH

1,425 sq.ft

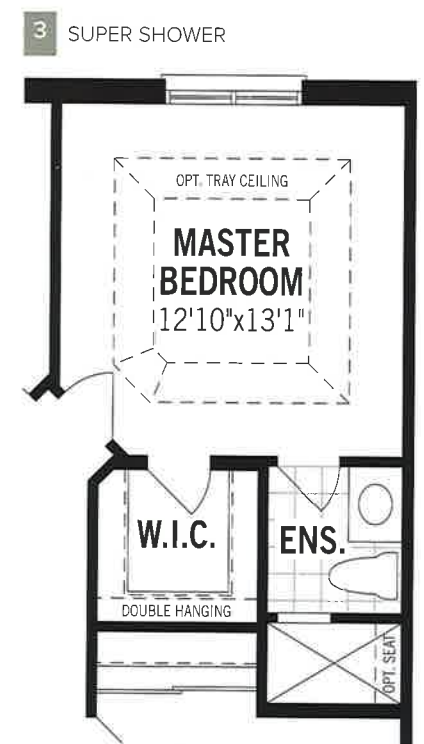


Architect's Choice Options

GROUND FLOOR OPTIONS



SECOND FLOOR OPTIONS



- ADDITIONAL ARCHITECT'S CHOICE OPTIONS AVAILABLE FOR THIS HOME
- BASEMENT CHOICES
- Cold Cellar
 - Partial area under the front porch specific to the elevation purchased
 - Insulated door, overhead light, floor drain, and vent
 - Rec. Room Ready Package
 - Rough-in drains in predetermined location for future 3-pc bathroom
 - Deeper basement windows (where applicable)

BTHA All illustrations are artist's concept. Specifications, terms and conditions are subject to change without notice. These floor plans and room dimensions apply to the "Tudor" elevation of this model type. Note that plans and room dimensions may vary according to elevation. Plan may be built as the mirror image. "Quiet wall" (where shown) means a wall in which additional insulation has been installed. This will assist in reducing, but not eliminating, ambient sound from adjoining rooms and mechanical systems. The extent of the reduction will vary depending upon various factors including, without limitation, the presence and extent of mechanical systems located in the wall. Please consult your sales representative. E.&O.E. March 2017. Copyright 2017 - Mattamy Homes Limited.

2-STORY
TOWNHOMES

THE KINGSBRIDGE

1,544 sq.ft



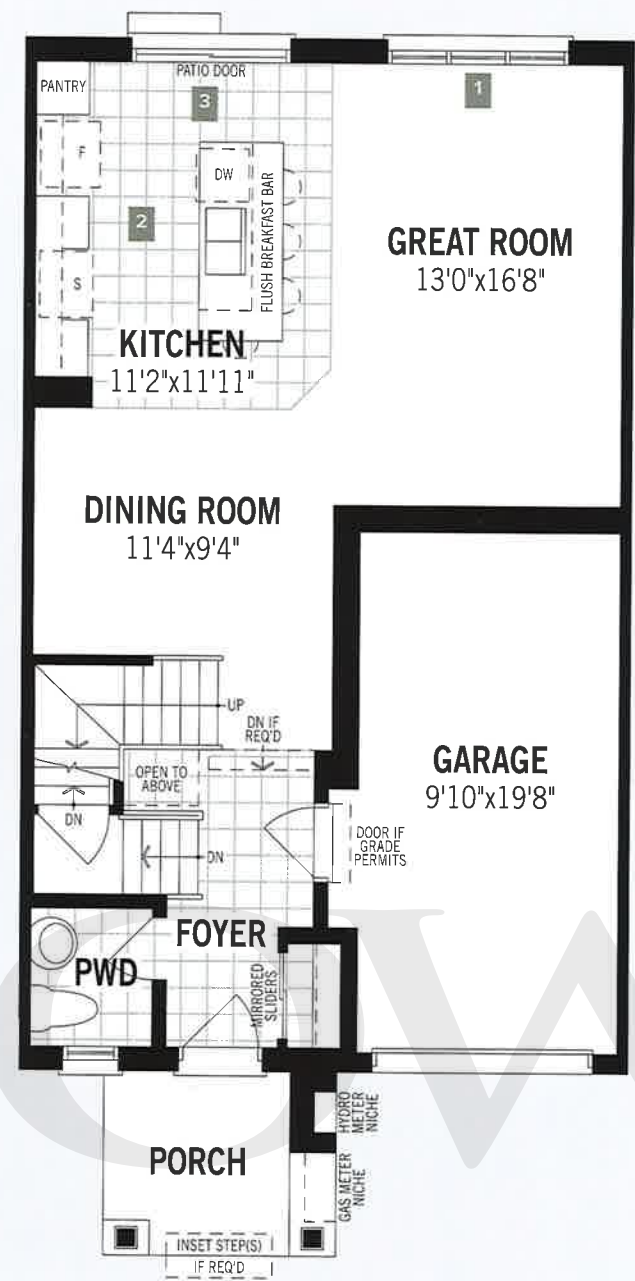
ENGLISH MANOR



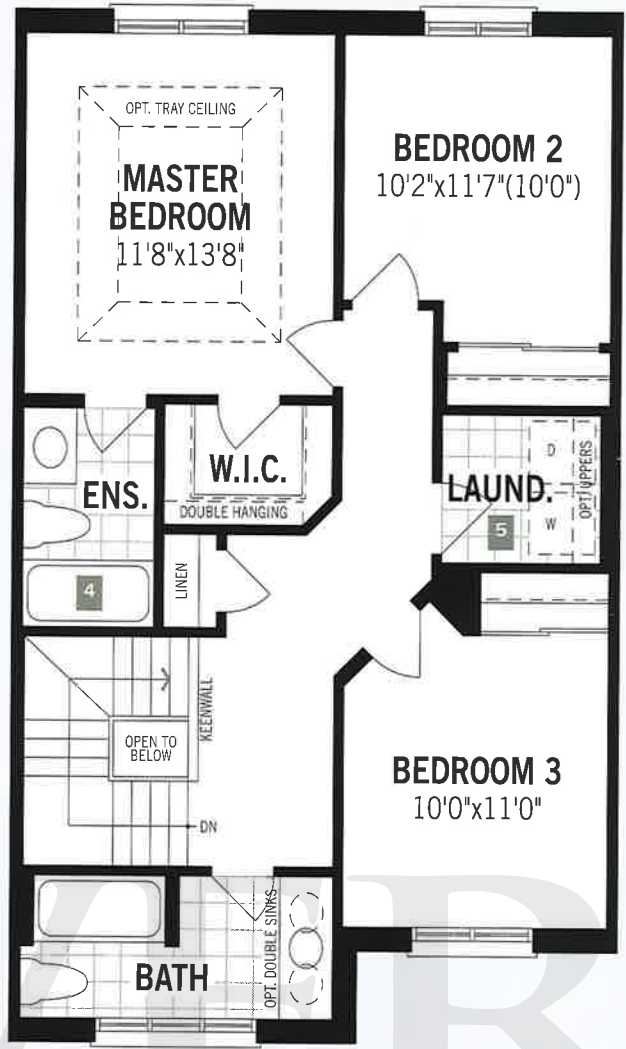
TUDOR



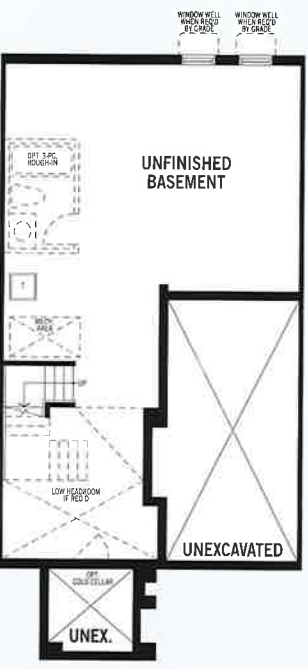
FRENCH CHATEAU



GROUND FLOOR



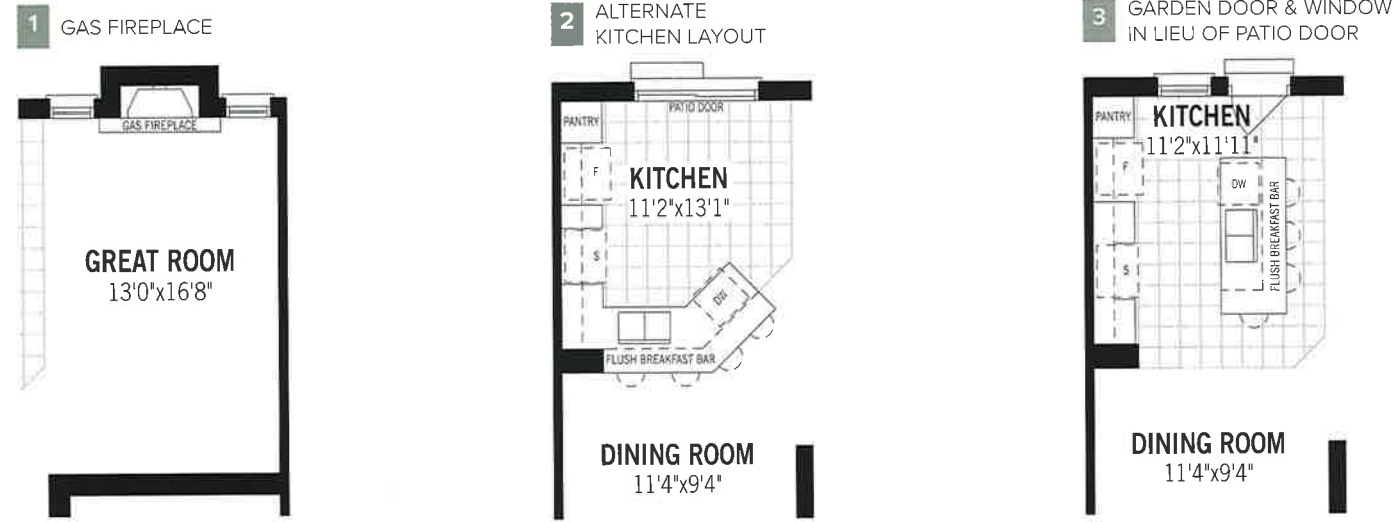
SECOND FLOOR



BASEMENT

Architect's Choice Options

GROUND FLOOR OPTIONS



SECOND FLOOR OPTIONS



ADDITIONAL ARCHITECT'S CHOICE OPTIONS AVAILABLE FOR THIS HOME

- BASEMENT CHOICES
- Cold Cellar
 - Partial area under the front porch specific to the elevation purchased
 - Insulated door, overhead light, floor drain, and vent
 - Rec. Room Ready Package
 - Rough-in drains in predetermined location for future 3-pc bathroom
 - Deeper basement windows (where applicable)

BTB All illustrations are artist's concept. Specifications, terms and conditions are subject to change without notice. These floor plans and room dimensions apply to the "English Manor" elevation of this model type. Note that plans and room dimensions may vary according to elevation. Plan may be built as the mirror image. "Quiet wall" (where shown) means a wall in which additional insulation has been installed. This will assist in reducing, but not eliminating, ambient sound from adjoining rooms and mechanical systems. The extent of the reduction will vary depending upon various factors including, without limitation, the presence and extent of mechanical systems located in the wall. Please consult your sales representative. E.&O.E. March 2017. Copyright 2017 - Mattamy Homes Limited.

2-STOREY
TOWNHOMES

THE NORMANDE

1,677 sq.ft (Incl. 10 sq.ft. O.T.B.)



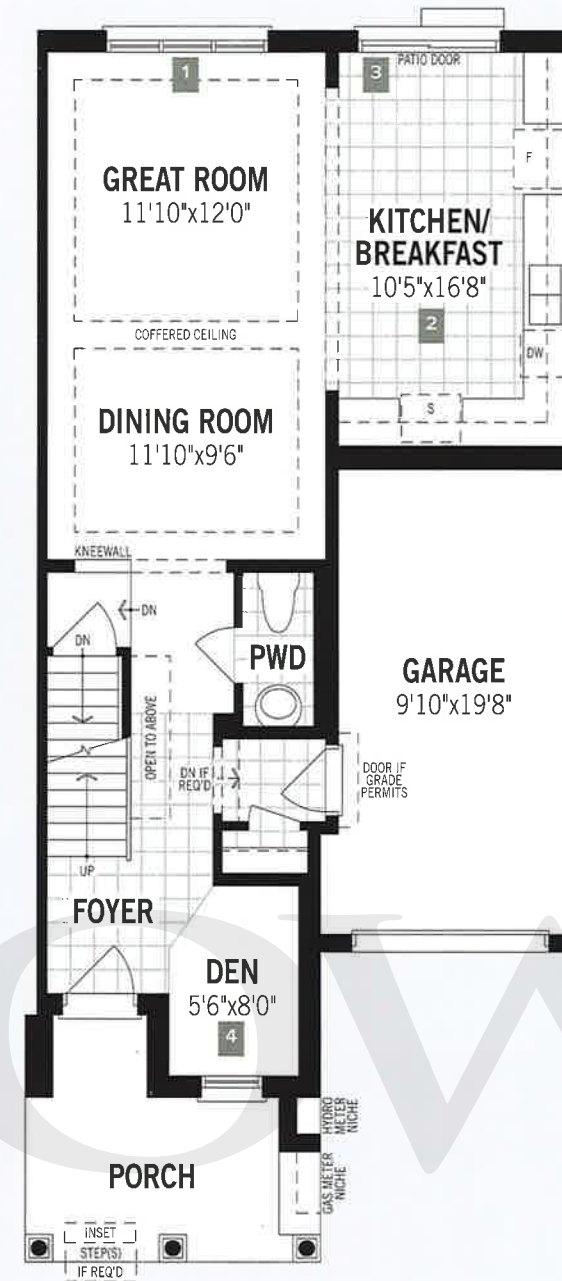
FRENCH CHATEAU



ENGLISH MANOR



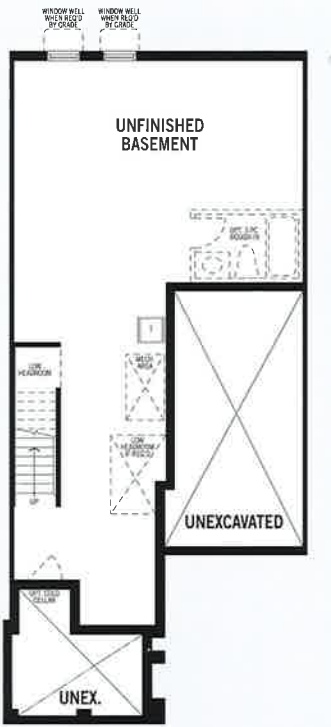
TUDOR



GROUND FLOOR



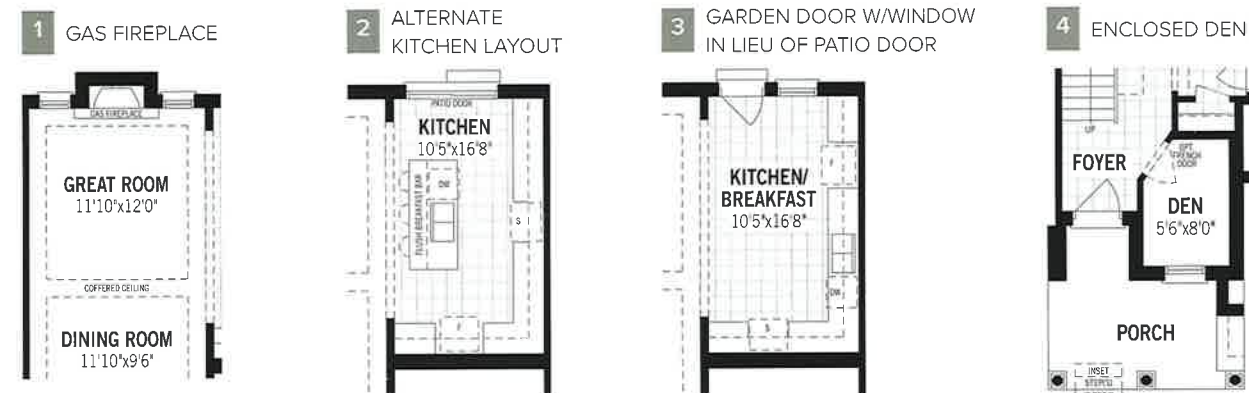
SECOND FLOOR



BASEMENT

Architect's Choice Options

GROUND FLOOR OPTIONS



SECOND FLOOR OPTIONS



ADDITIONAL
ARCHITECT'S CHOICE
OPTIONS AVAILABLE
FOR THIS HOME

BASEMENT CHOICES

Cold Cellar

- Partial area under the front porch specific to the elevation purchased
- Insulated door, overhead light, floor drain, and vent

Rec. Room Ready Package

- Rough-in drains in predetermined location for future 3-pc bathroom
- Deeper basement windows (where applicable)

BTHC All illustrations are artist's concept. Specifications, terms and conditions are subject to change without notice. These floor plans and room dimensions apply to the 'French Chateau' elevation of this model type. Note that plans and room dimensions may vary according to elevation. Plan may be built as the mirror image. "Quiet wall" (where shown) means a wall in which additional insulation has been installed. This will assist in reducing, but not eliminating, ambient sound from adjoining rooms and mechanical systems. The extent of the reduction will vary depending upon various factors including, without limitation, the presence and extent of mechanical systems located in the wall. Please consult your sales representative. E.&O.E. March 2017. Copyright 2017 - Mattamy Homes Limited.

2-STORY TOWNHOMES

THE PARKHILL END

1,722 sq.ft



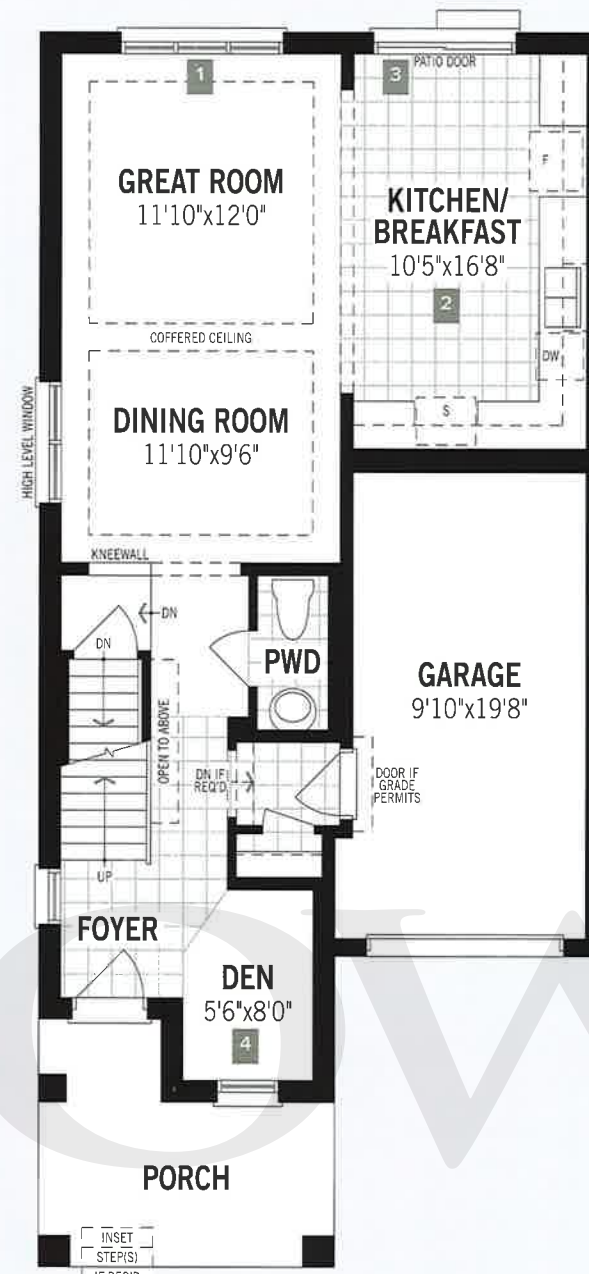
TUDOR



ENGLISH MANOR



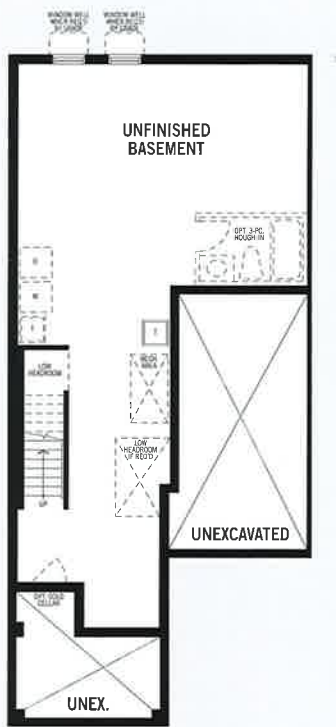
FRENCH CHATEAU



GROUND FLOOR



SECOND FLOOR

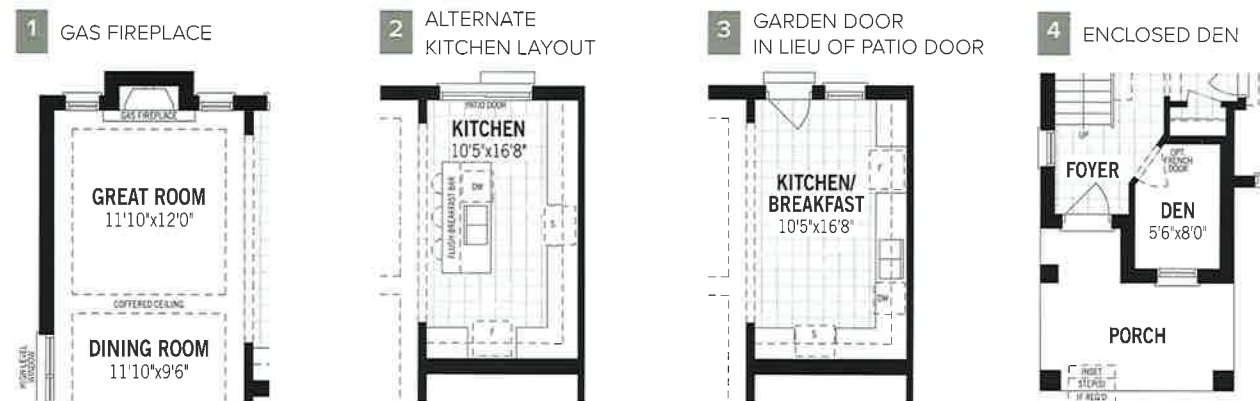


BASEMENT

REAL ESTATE LTD. BROKERAGE

Architect's Choice Options

GROUND FLOOR OPTIONS



SECOND FLOOR OPTIONS



ADDITIONAL ARCHITECT'S CHOICE OPTIONS AVAILABLE FOR THIS HOME

BASEMENT CHOICES

- Cold Cellar**
 - Partial area under the front porch specific to the elevation purchased.
 - Insulated door, overhead light, floor drain, and vent.
- Rec. Room Ready Package**
 - Rough-in drains in predetermined location for future 3-pc bathroom.
 - Deeper basement windows (where applicable).

BTBD All illustrations are artist's concept. Specifications, terms and conditions are subject to change without notice. These floor plans and room dimensions apply to the "Tudor" elevation of this model type. Note that plans and room dimensions may vary according to elevation. Plan may be built as the mirror image. "Quiet wall" (where shown) means a wall in which additional insulation has been installed. This will assist in reducing, but not eliminating, ambient sound from adjoining rooms and mechanical systems. The extent of the reduction will vary depending upon various factors including, without limitation, the presence and extent of mechanical systems located in the wall. Please consult your sales representative. E.&O.E. March 2017. Copyright 2017 - Mattamy Homes Limited.

2-STOREY
TOWNHOMES

THE SPRINGVALE

1,765 sq.ft



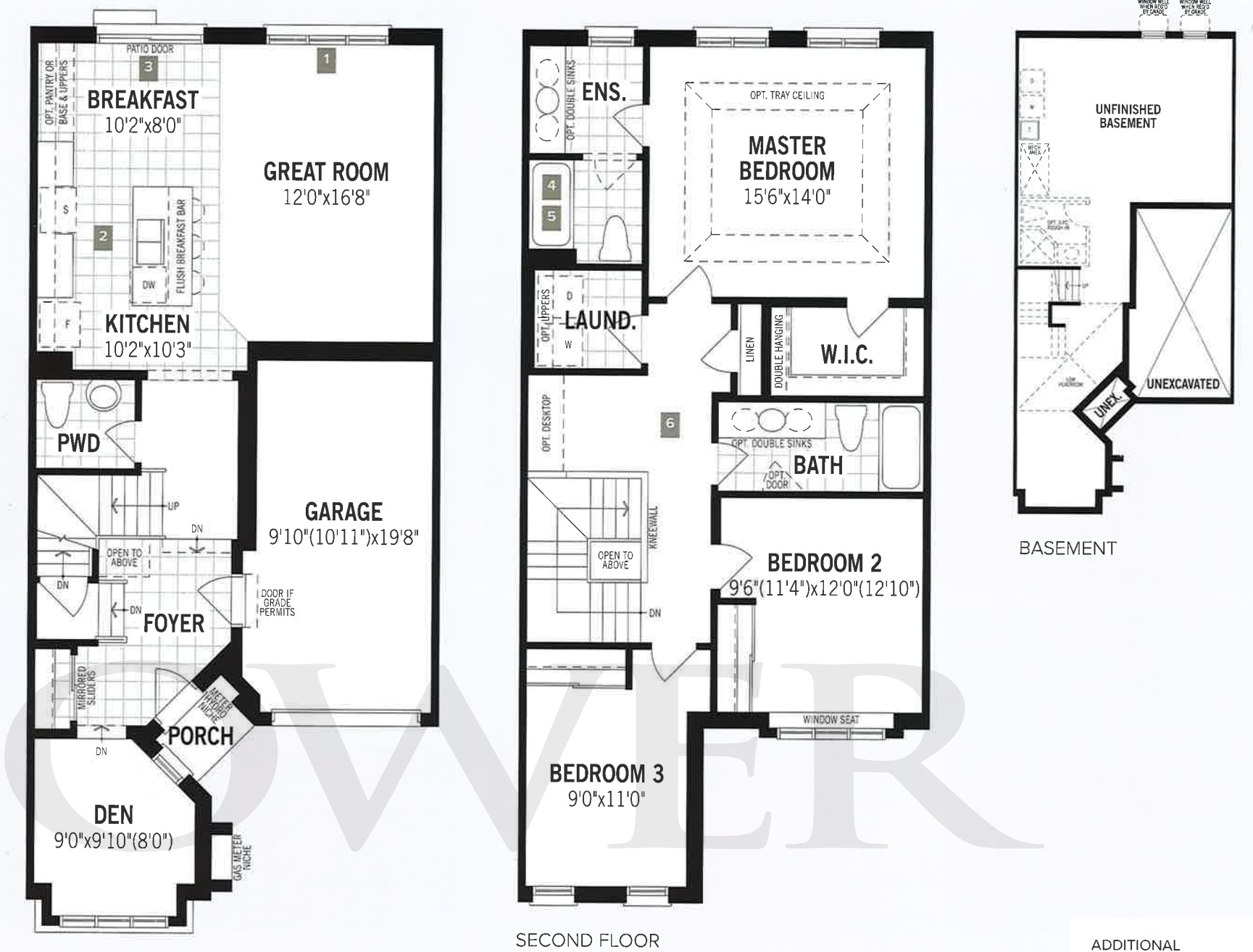
ENGLISH MANOR



TUDOR



FRENCH CHATEAU



GROUND FLOOR

SECOND FLOOR

Architect's Choice Options

GROUND FLOOR OPTIONS



SECOND FLOOR OPTIONS



ADDITIONAL ARCHITECT'S CHOICE OPTIONS AVAILABLE FOR THIS HOME

BASEMENT CHOICES
Rec. Room Ready Package

- Rough-in drains in predetermined location for future 3-pc bathroom
- Deeper basement windows (where applicable)

BTHE All illustrations are artist's concept. Specifications, terms and conditions are subject to change without notice. These floor plans and room dimensions apply to the "English Manor" elevation of this model type. Note that plans and room dimensions may vary according to elevation. Plan may be built as the mirror image. "Quiet wall" (where shown) means a wall in which additional insulation has been installed. This will assist in reducing, but not eliminating, ambient sound from adjoining rooms and mechanical systems. The extent of the reduction will vary depending upon various factors including, without limitation, the presence and extent of mechanical systems located in the wall. Please consult your sales representative. E.&O.E. March 2017. Copyright 2017 - Mattamy Homes Limited.

2-STOREY
TOWNHOMES

THE STRATFORD CORNER

1,888 sq.ft (Incl. 14 sq.ft. O.T.B.)

TUDOR



ENGLISH MANOR



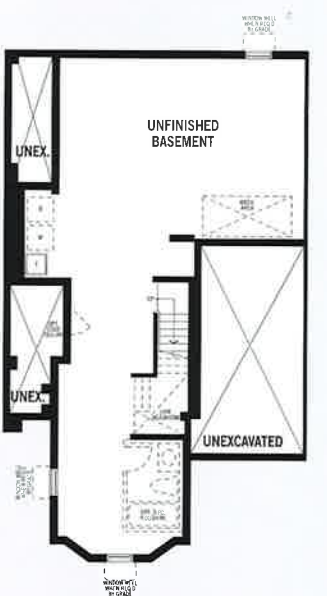
FRENCH CHATEAU



GROUND FLOOR



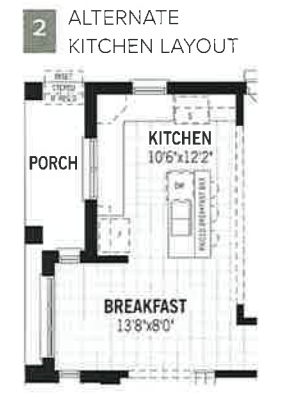
SECOND FLOOR



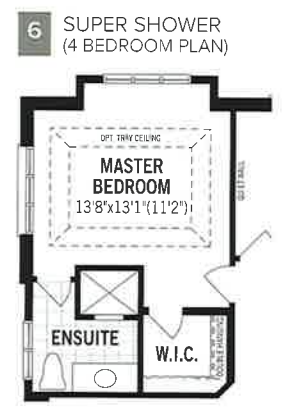
BASEMENT

Architect's Choice Options

GROUND FLOOR OPTIONS



SECOND FLOOR OPTIONS



ADDITIONAL ARCHITECT'S CHOICE OPTIONS AVAILABLE FOR THIS HOME

- BASEMENT CHOICES**
- Cold Cellar*
 - Partial area under the front porch specific to the elevation purchased
 - Insulated door, overhead light, floor drain, and vent
 - Rec. Room Ready Package*
 - Rough-in drains in predetermined location for future 3-pc bathroom
 - Deeper basement windows (where applicable)

BTHF All illustrations are artist's concept. Specifications, terms and conditions are subject to change without notice. These floor plans and room dimensions apply to the "Tudor" elevation of this model type. Note that plans and room dimensions may vary according to elevation. Plan may be built as the mirror image. "Quiet wall" (where shown) means a wall in which additional insulation has been installed. This will assist in reducing, but not eliminating, ambient sound from adjoining rooms and mechanical systems. The extent of the reduction will vary depending upon various factors including, without limitation, the presence and extent of mechanical systems located in the wall. Please consult your sales representative. E.&O.E. March 2017. Copyright 2017 - Mattamy Homes Limited.

2-STOREY
TOWNHOMES

THE TILBURY END

1,888 sq.ft (Incl. 16 sq.ft. O.T.B.)

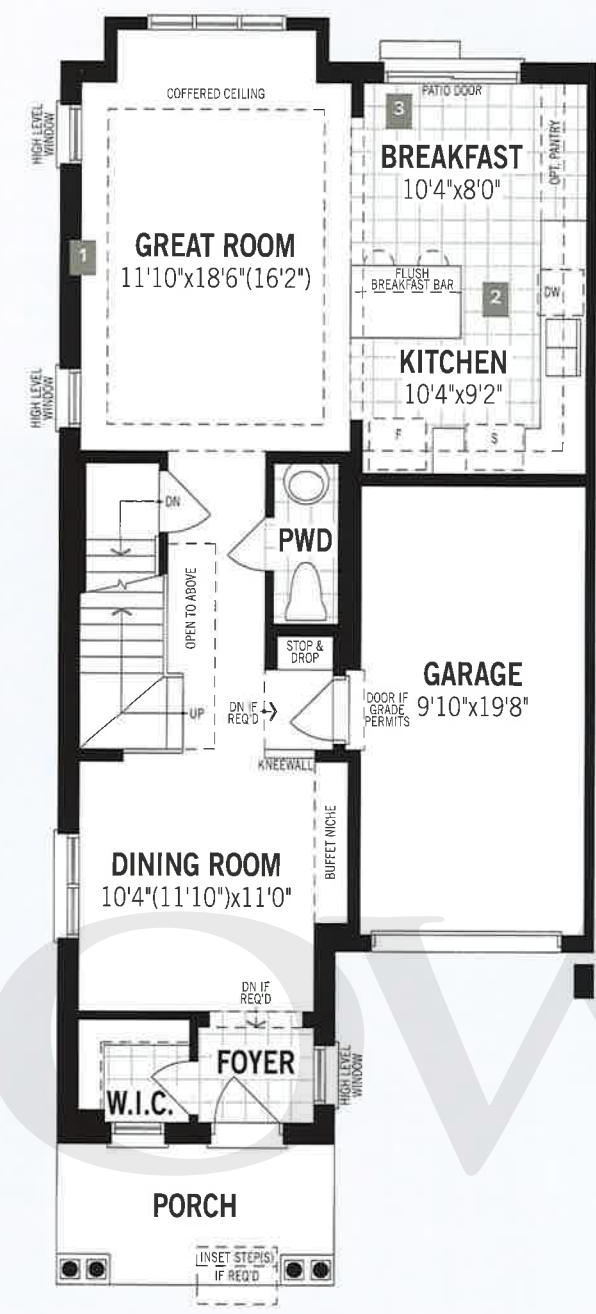
FRENCH CHATEAU



ENGLISH MANOR



TUDOR



GROUND FLOOR



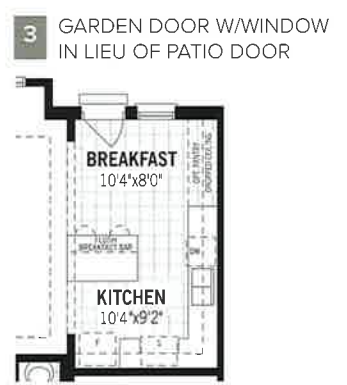
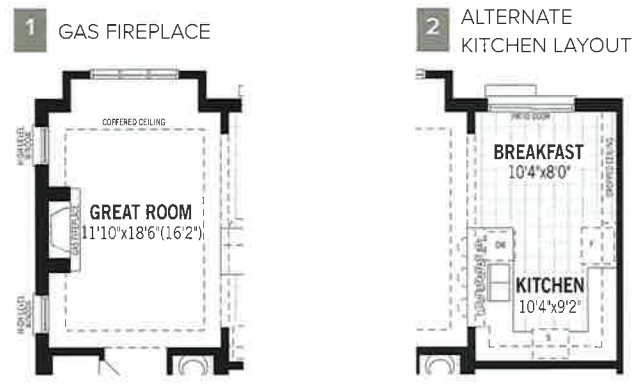
SECOND FLOOR



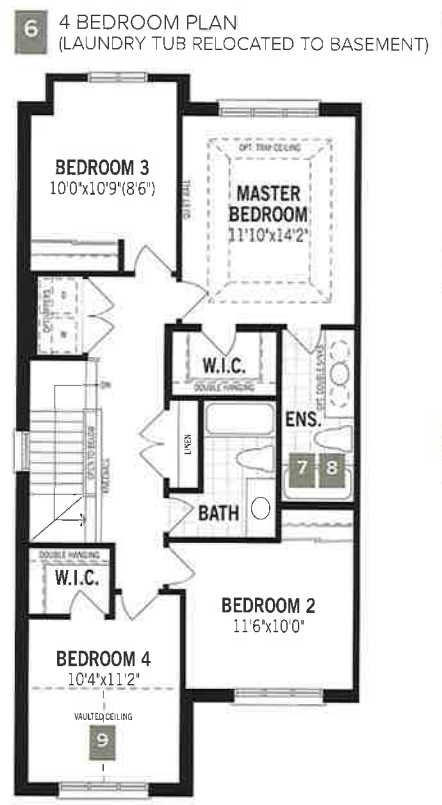
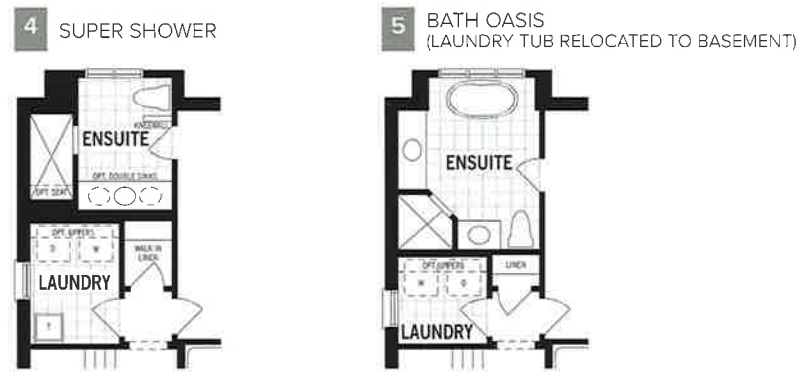
BASEMENT

Architect's Choice Options

GROUND FLOOR OPTIONS



SECOND FLOOR OPTIONS



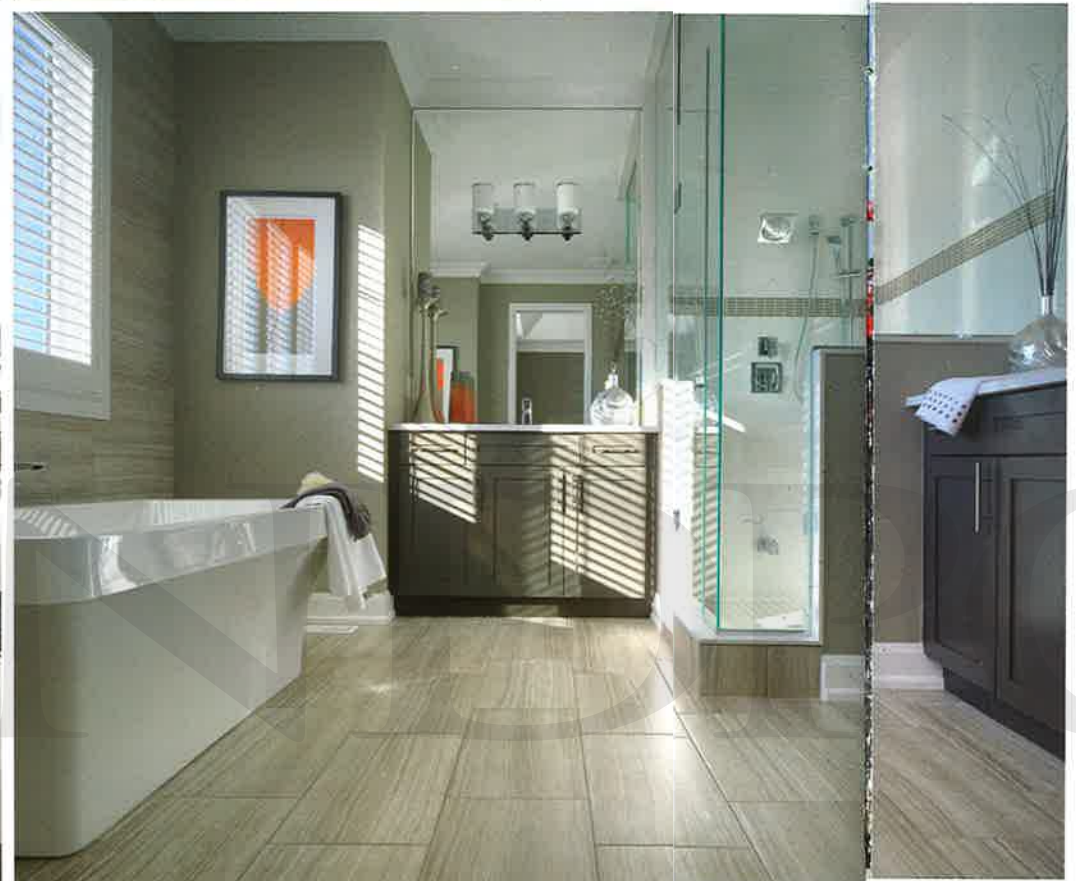
ADDITIONAL ARCHITECT'S CHOICE OPTIONS AVAILABLE FOR THIS HOME

- BASEMENT CHOICES**
- Cold Cellar
 - Partial area under the front porch specific to the elevation purchased
 - Insulated door, overhead light, floor drain, and vent
- Rec. Room Ready Package**
- Rough-in drains in predetermined location for future 3-pc bathroom
 - Deeper basement windows (where applicable)

BTMG All illustrations are artist's concept. Specifications, terms and conditions are subject to change without notice. These floor plans and room dimensions apply to the 'French Chateau' elevation of this model type. Note that plans and room dimensions may vary according to elevation. Plan may be built as the mirror image. "Quiet wall" (where shown) means a wall in which additional insulation has been installed. This will assist in reducing, but not eliminating, ambient sound from adjoining rooms and mechanical systems. The extent of the reduction will vary depending upon various factors including, without limitation, the presence and extent of mechanical systems located in the wall. Please consult your sales representative. E & O E. March 2017. Copyright 2017 - Mattamy Homes Limited.



LIVE



CHOOSE

Architect's Choice Options let you

LIVE IN THE STYLE OF YOUR CHOICE

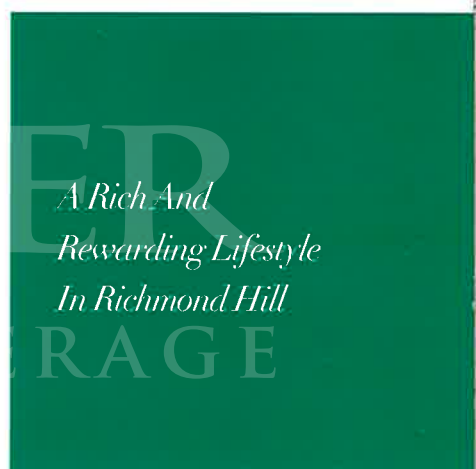
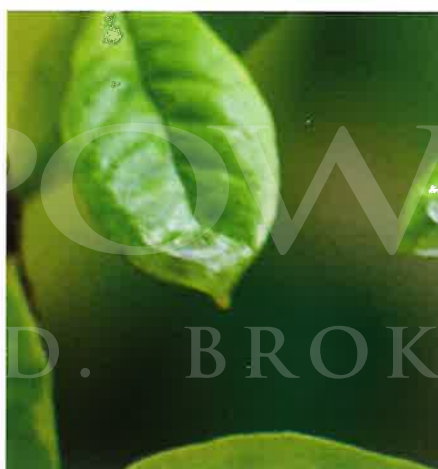
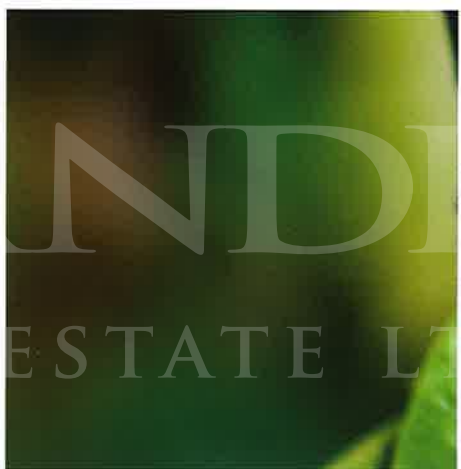
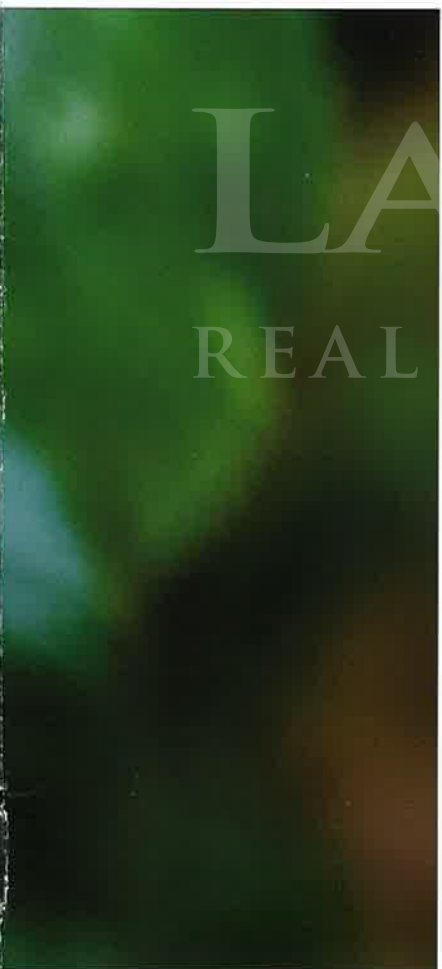
At Mattamy, every home and every community is created for people to live well. Thoughtful and sophisticated home design ensures that every living space is as large and as usable as it can possibly be. Windows are generous to admit gorgeous, natural light. Passageways are large and rooms are unobstructed by unnecessary barriers. Of course, homeowners are able to choose their own floorplans and decor options. But there's much more. Mattamy provides a selection of Architect's Choice Options that allow you more ways to personalize your home. You could say we've done your homework for you with all options fully tested by real families under real-life conditions. All in all, these Mattamy exclusive options provide the best value for people who desire more creative choice in how they live.

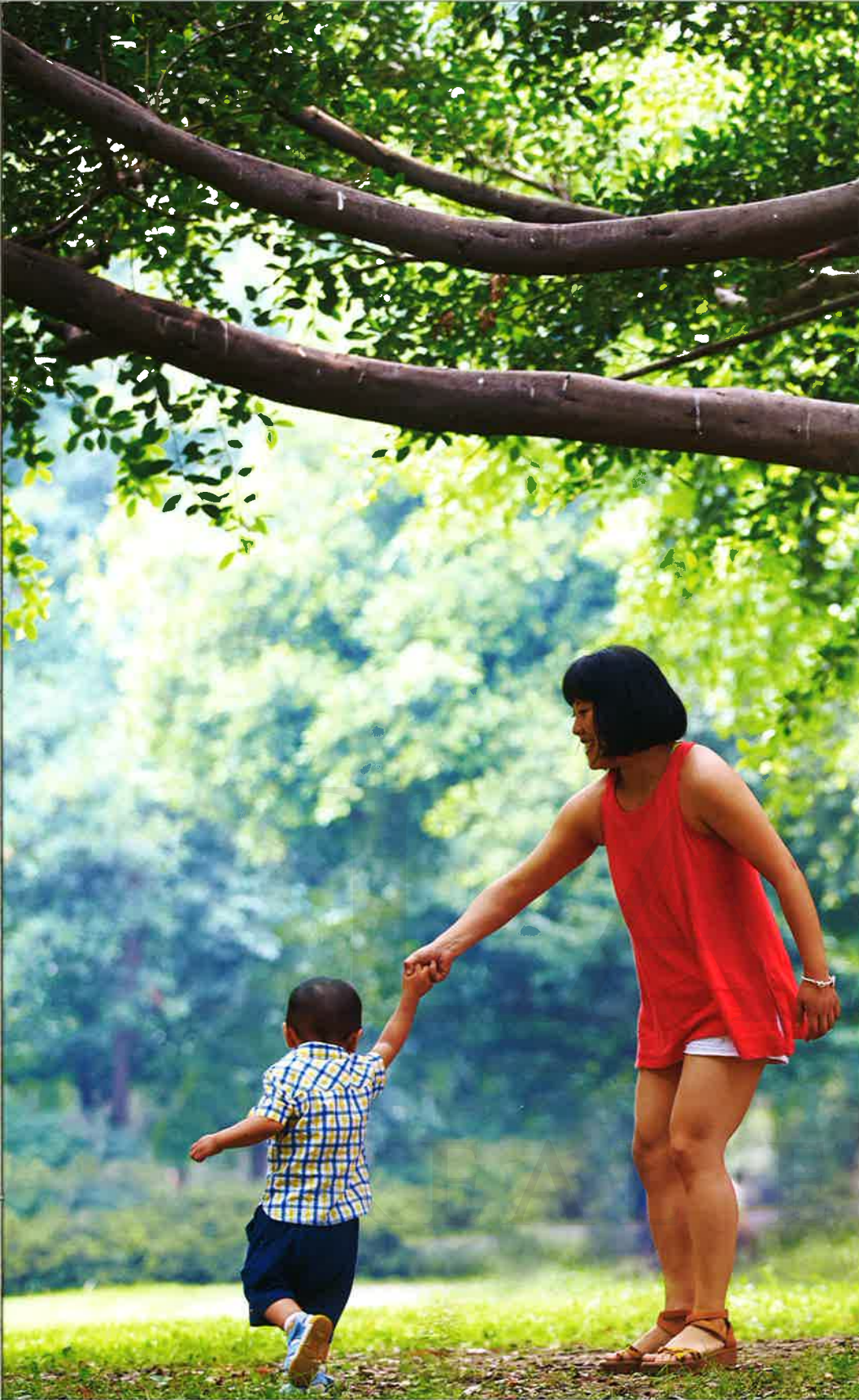
LANDPOWER

mattamyHOMES

REAL ESTATE LTD. BROKERAGE

MATTAMYHOMES.COM





HOME



A proud history of

PROGRESSIVE DESIGN



LEGACY

The largest private builder in North America, Mattamy already holds a legacy in Richmond Hill. From the beginning, and now after 70,000 homes in hundreds of communities, we still listen to our homeowners – past and prospective – so that we may continue to create places in which people love to live. From establishing a community to individual home design, we continually incorporate what we've learned for the benefit of people who appreciate higher standards.

ENDURING



SPACE



Raising the standards of

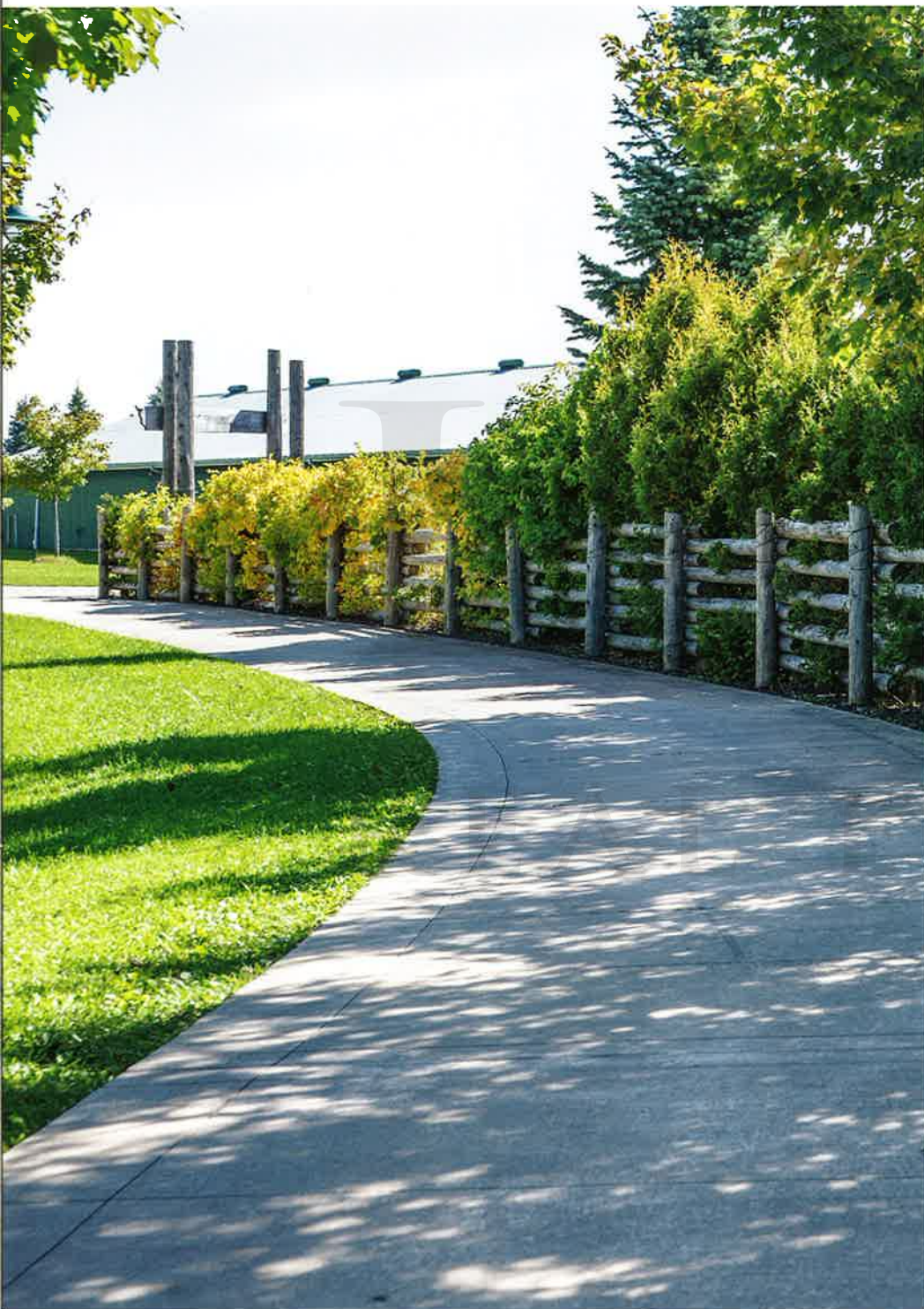
FINE LIVING IN RICHMOND HILL

Our homes maximize livable space. And our neighbourhoods are fashioned to be real communities, where people can gather and participate in the beautiful spaces in which they live. Richmond Green is our latest evolution – a lively, livable community for every person and every family, every season of the year. Everything about Richmond Green is created to augment the region. The community encourages you to decide upon your ideal style of living, offering an exquisite mix of Executive Townhomes and Detached Designs. The streetscapes will be graced by splendid exteriors of stone, brick, and stucco. Inside, Mattamy designers have fashioned fine interiors for enduring touches of luxury.

TE LTD.

BROKERAGE

LIMITLESS



Exceptional facilities for the

ENJOYMENT OF ANY FAMILY

What an extraordinary place to raise a family. Bordering on the Richmond Green Community Centre, our new Mattamy neighbourhood has immediate access to a spectacular range of facilities. There's almost limitless room to play on seven baseball diamonds, a waterplay splash pad, outdoor amphitheatre, a state-of-the-art skateboard park facility and a 250-metre landscaped inline skating trail that transforms in winter to an artificial ice-skating surface. Even a simple walk or bicycle ride is enhanced by a natural, protected heritage landscape to the north, and smaller parks and ponds within the community itself. Naturally, access to major thoroughfares like Highway 404 is immediate and exceptional retail shopping, restaurants, and cinemas are also conveniently at-hand.

PLAY

VILLAGE HOMES

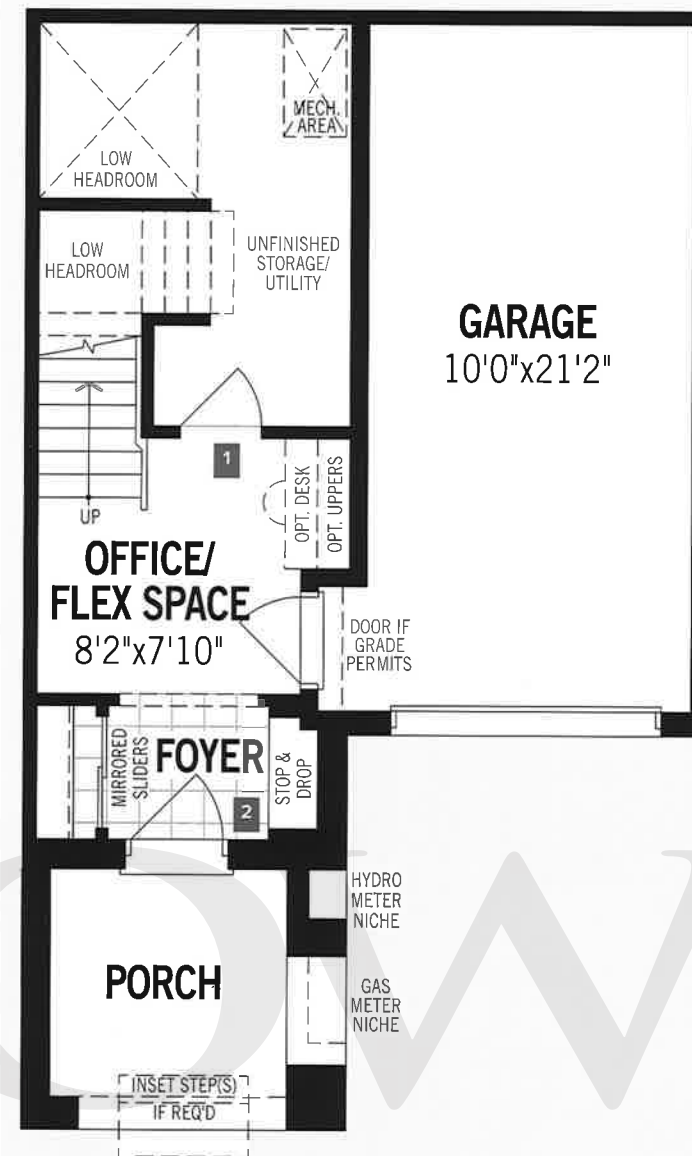
THE DORCHESTER

1,138 sq. ft

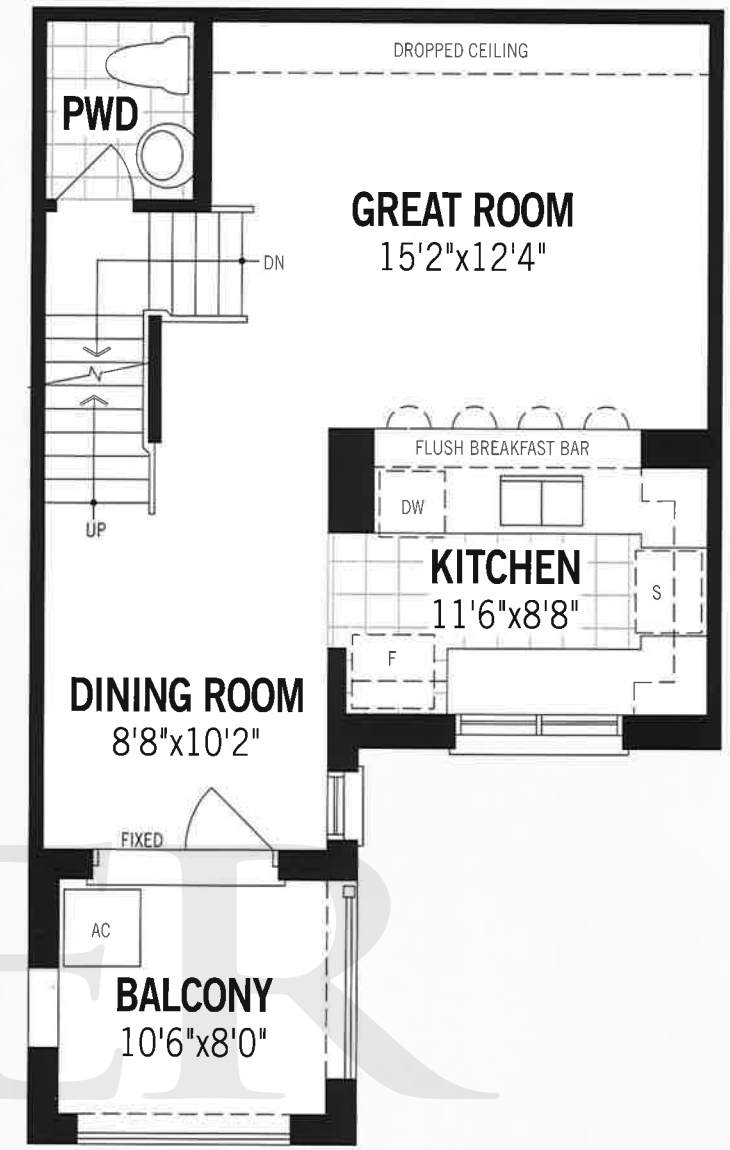
ENGLISH MANOR



FRENCH CHATEAU



GROUND FLOOR



SECOND FLOOR

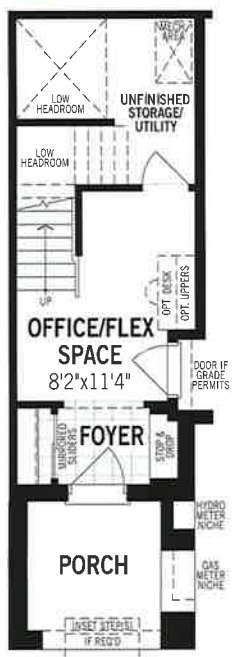


THIRD FLOOR

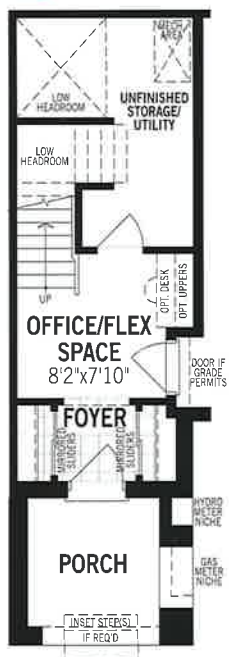
Architect's Choice Options

GROUND FLOOR OPTIONS

1 LARGER OFFICE/FLEX SPACE



2 CLOSET IN LIEU OF STOP & DROP



THIRD FLOOR OPTIONS

3 SUPER SHOWER IN ENSUITE



4 RELOCATED LAUNDRY

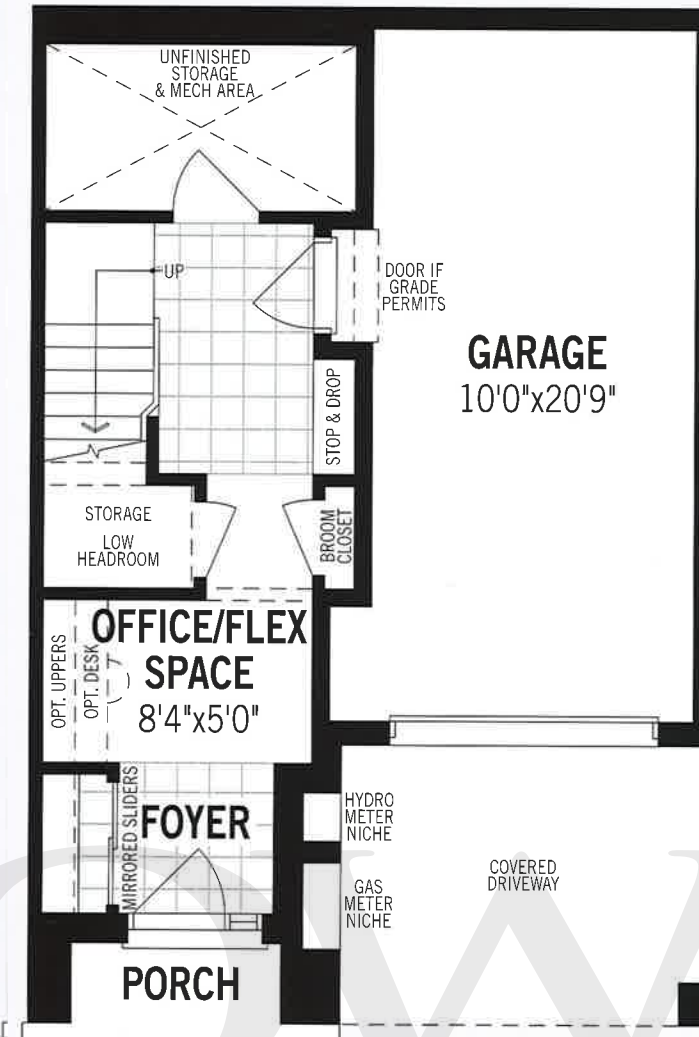


BVHB All illustrations are artist's concept. Specifications, terms and conditions are subject to change without notice. These floor plans and room dimensions apply to the "English Manor" elevation of this model type. Note that plans and room dimensions may vary according to elevation. Plan may be built as the mirror image. "Quiet wall" (where shown) means a wall in which additional insulation has been installed. This will assist in reducing, but not eliminating, ambient sound from adjoining rooms and mechanical systems. The extent of the reduction will vary depending upon various factors including, without limitation, the presence and extent of mechanical systems located in the wall. Please consult your sales representative. E.&O.E. March 2017. Copyright 2017 - Mattamy Homes Limited.

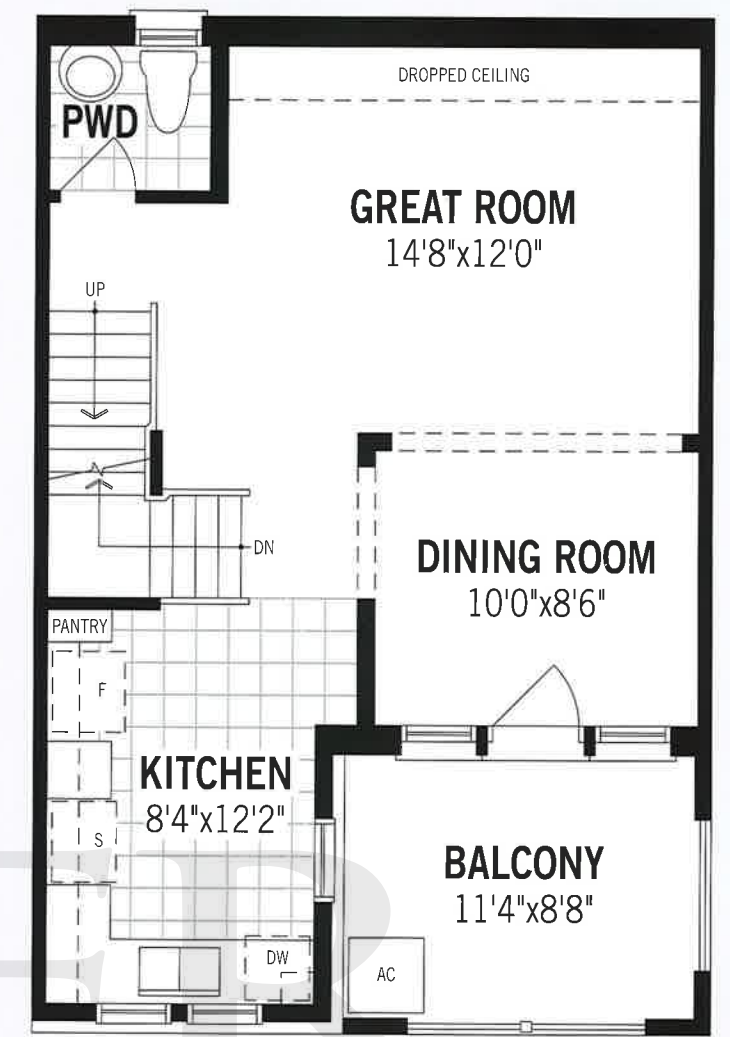
VILLAGE
HOMES

THE ERIN II

1,296 sq.ft



(GROUND FLOOR



SECOND FLOOR



THIRD FLOOR

AHBA All illustrations are artist's concept. Specifications, terms and conditions are subject to change without notice. These floor plans and room dimensions apply to the 'Tudor' elevation of this model type. Note that plans and room dimensions may vary according to elevation. Plan may be built as the mirror image. "Quiet wall" (where shown) means a wall in which additional insulation has been installed. This will assist in reducing, but not eliminating, ambient sound from adjoining rooms and mechanical systems. The extent of the reduction will vary depending upon various factors including, without limitation, the presence and extent of mechanical systems located in the wall. Please consult your sales representative. E.&O.E. March 2017. Copyright 2017 - Mattamy Homes Limited.

VILLAGE HOMES

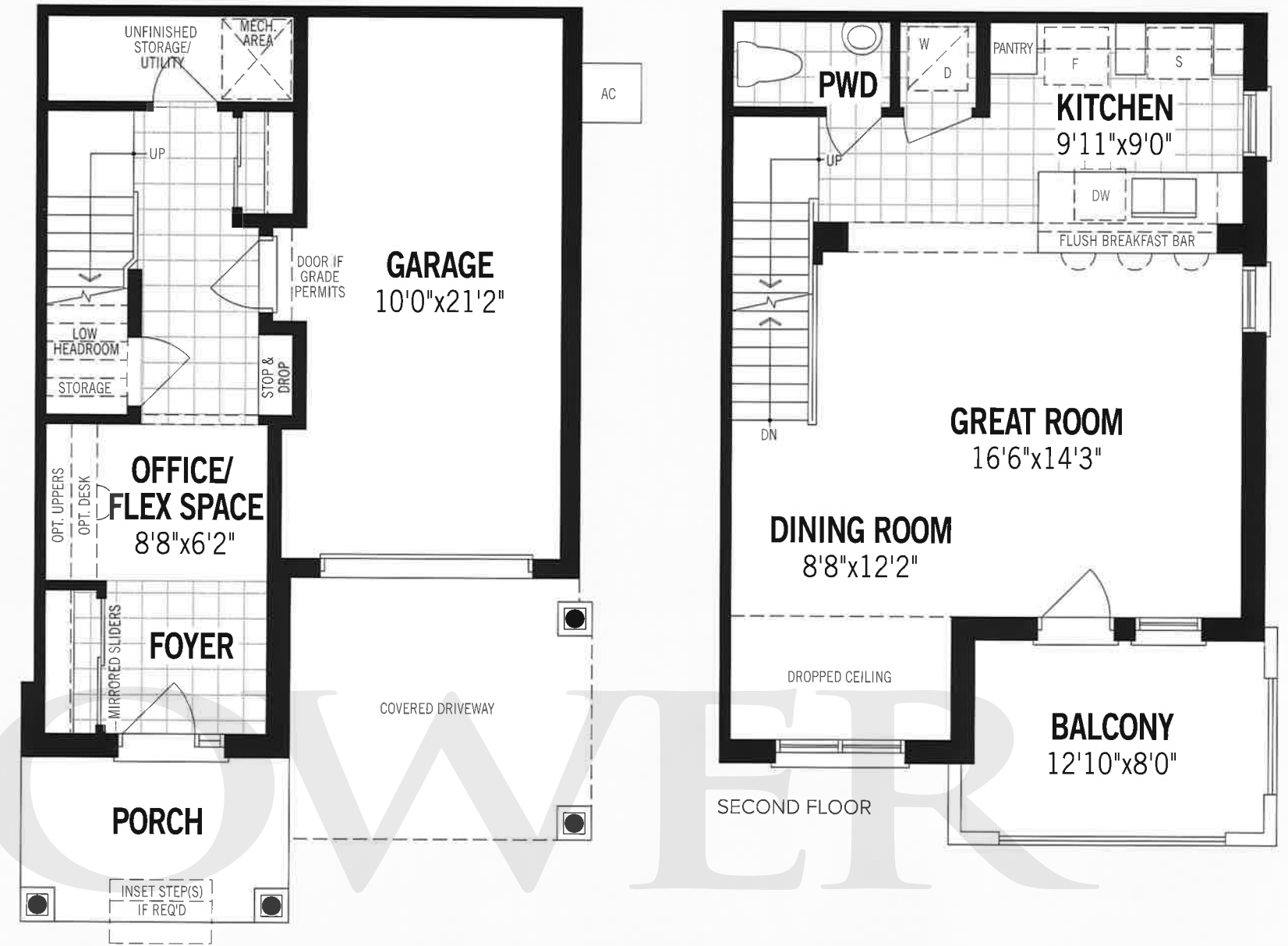
THE LAKEFIELD END

1,347 sq.ft

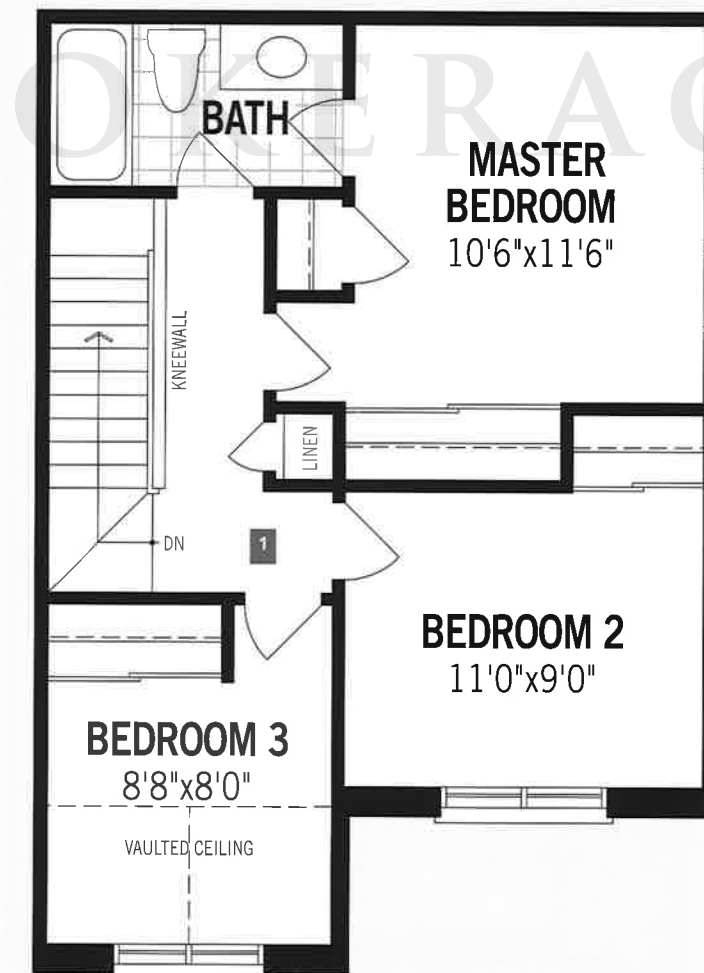
ENGLISH MANOR



FRENCH CHATEAU



GROUND FLOOR

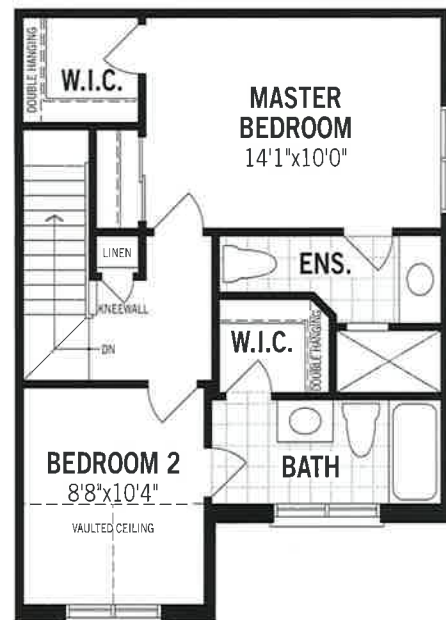


THIRD FLOOR

Architect's Choice Options

THIRD FLOOR OPTIONS

1 2 BEDROOM 2 BATH PLAN

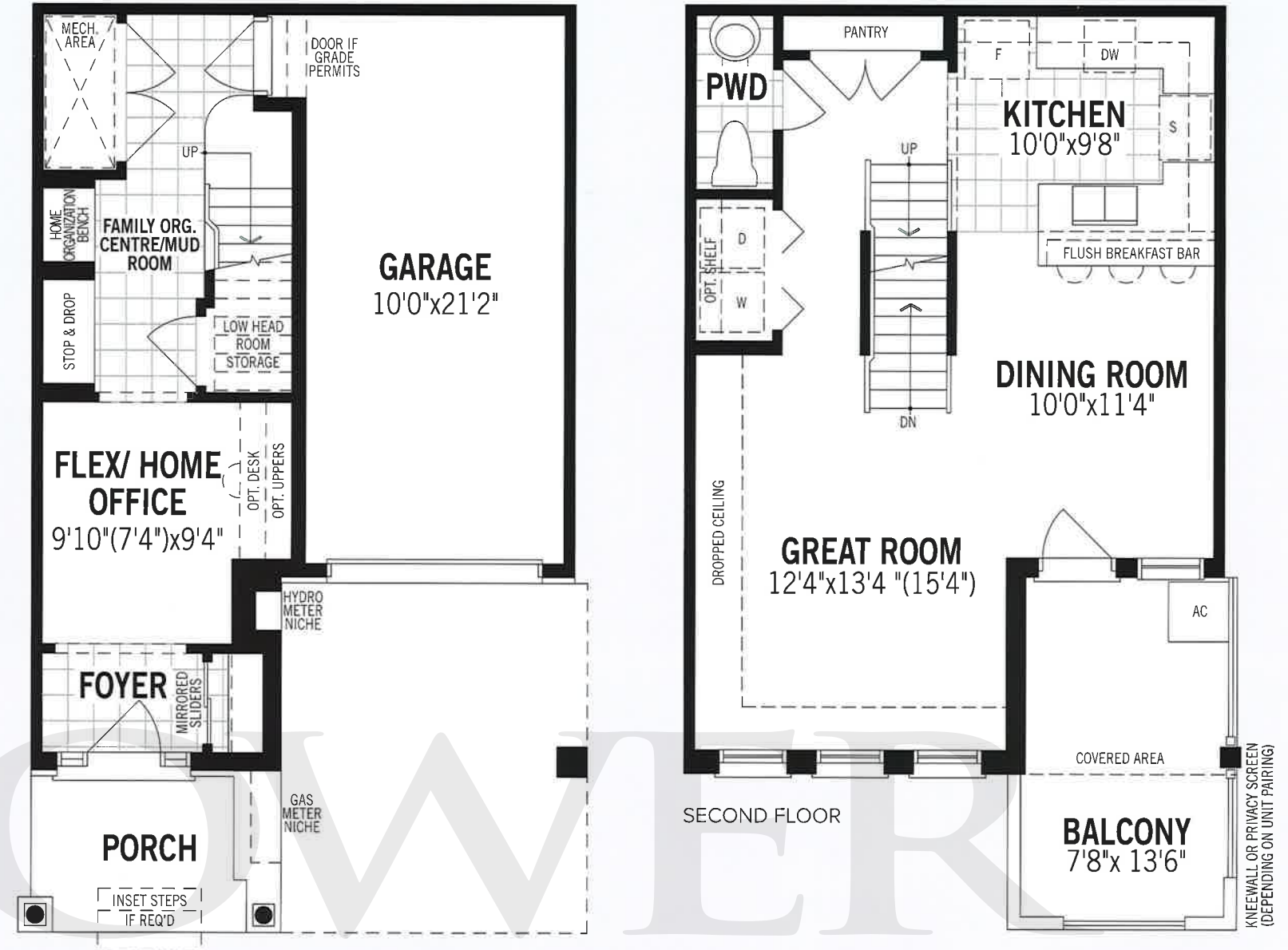


BVHD All illustrations are artist's concept. Specifications, terms and conditions are subject to change without notice. These floor plans and room dimensions apply to the "English Manor" elevation of this model type. Note that plans and room dimensions may vary according to elevation. Plan may be built as the mirror image. "Quiet wall" (where shown) means a wall in which additional insulation has been installed. This will assist in reducing, but not eliminating, ambient sound from adjoining rooms and mechanical systems. The extent of the reduction will vary depending upon various factors including, without limitation, the presence and extent of mechanical systems located in the wall. Please consult your sales representative. E.&O.E. March 2017. Copyright 2017 - Mattamy Homes Limited.

VILLAGE HOMES

THE NETHERBY

1,399 sq.ft

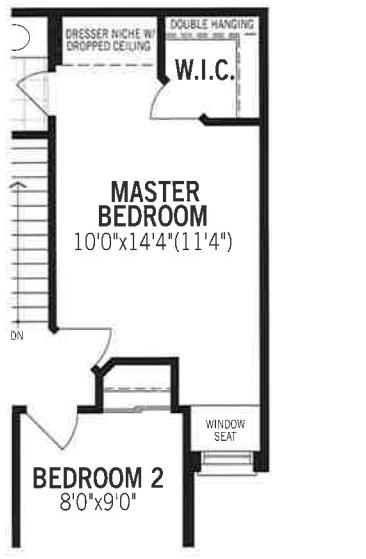


GROUND FLOOR

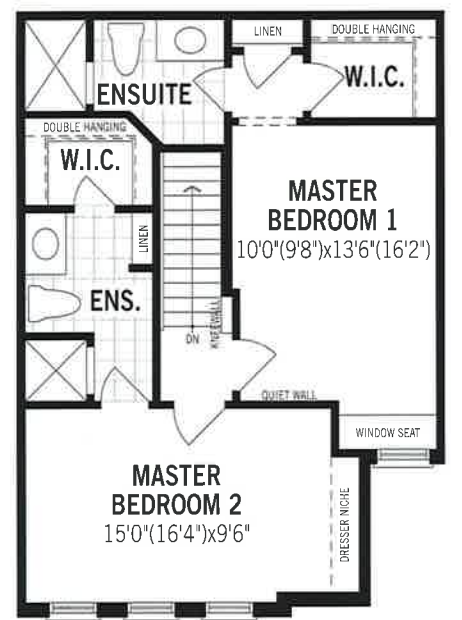
Architect's Choice Options

THIRD FLOOR OPTIONS

1 MASTER BEDROOM W/WALK-IN CLOSET & DRESSER NICHE



2 DOUBLE MASTER BEDROOMS



THIRD FLOOR

BVHE All illustrations are artist's concept. Specifications, terms and conditions are subject to change without notice. These floor plans and room dimensions apply to the 'French Chateau' elevation of this model type. Note that plans and room dimensions may vary according to elevation. Plan may be built as the mirror image. "Quiet wall" (where shown) means a wall in which additional insulation has been installed. This will assist in reducing, but not eliminating, ambient sound from adjoining rooms and mechanical systems. The extent of the reduction will vary depending upon various factors including, without limitation, the presence and extent of mechanical systems located in the wall. Please consult your sales representative. E.&O.E. March 2017. Copyright 2017 - Mattamy Homes Limited.

VILLAGE HOMES

THE NETHERBY II

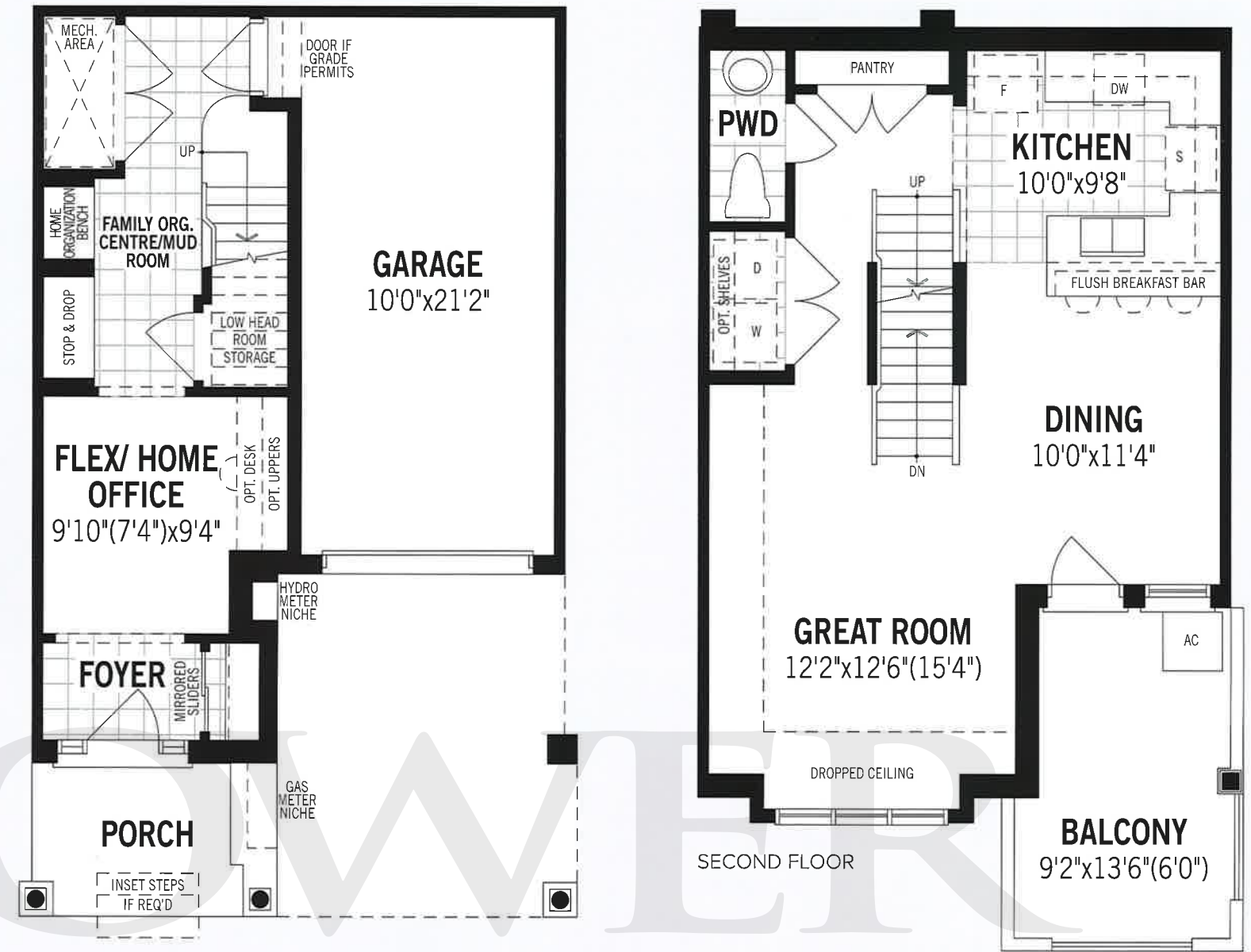
1,419 sq.ft



ENGLISH MANOR



TUDOR



GROUND FLOOR



THIRD FLOOR

Architect's Choice Options

THIRD FLOOR OPTIONS

1 MASTER BEDROOM W/W.I.C. & DRESSER NICHE



2 DOUBLE MASTER BEDROOMS



AHBB All illustrations are artist's concept. Specifications, terms and conditions are subject to change without notice. These floor plans and room dimensions apply to the 'English Manor' elevation of this model type. Note that plans and room dimensions may vary according to elevation. Plan may be built as the mirror image. "Quiet wall" (where shown) means a wall in which additional insulation has been installed. This will assist in reducing, but not eliminating, ambient sound from adjoining rooms and mechanical systems. The extent of the reduction will vary depending upon various factors including, without limitation, the presence and extent of mechanical systems located in the wall. Please consult your sales representative. E.&O.E. March 2017. Copyright 2017 - Mattamy Homes Limited.

VILLAGE HOMES

THE SUTTON CORNER

1,541 sq.ft

FRENCH CHATEAU



ENGLISH MANOR



Architect's Choice Options

GROUND FLOOR OPTIONS

1 ENCLOSED DEN



2 GUEST SUITE



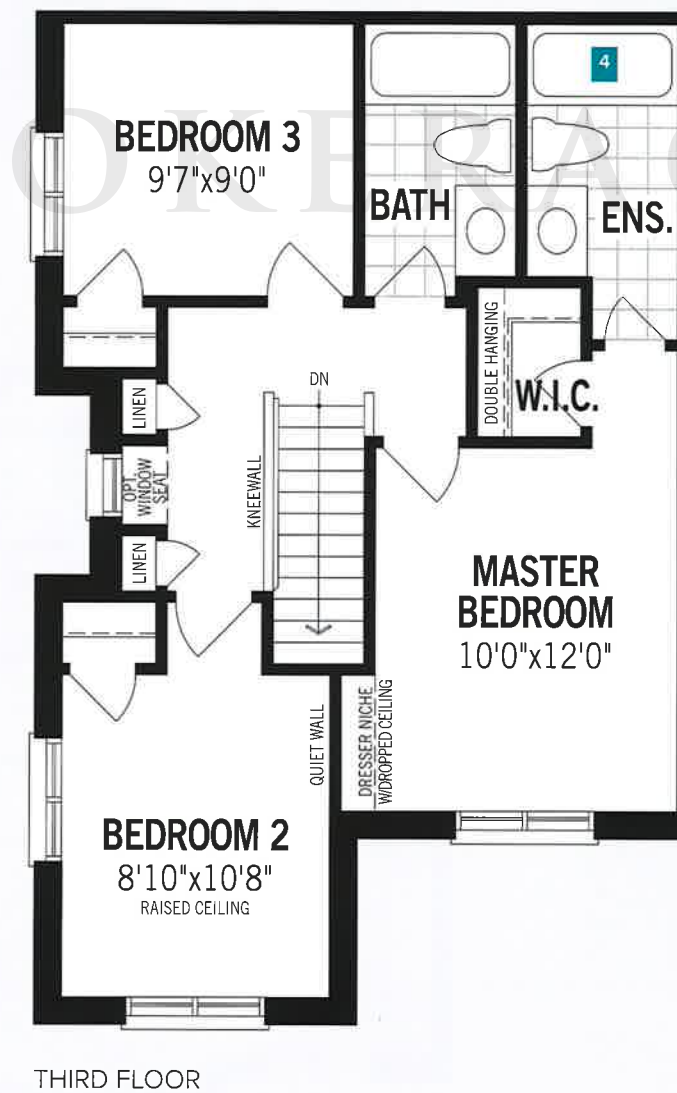
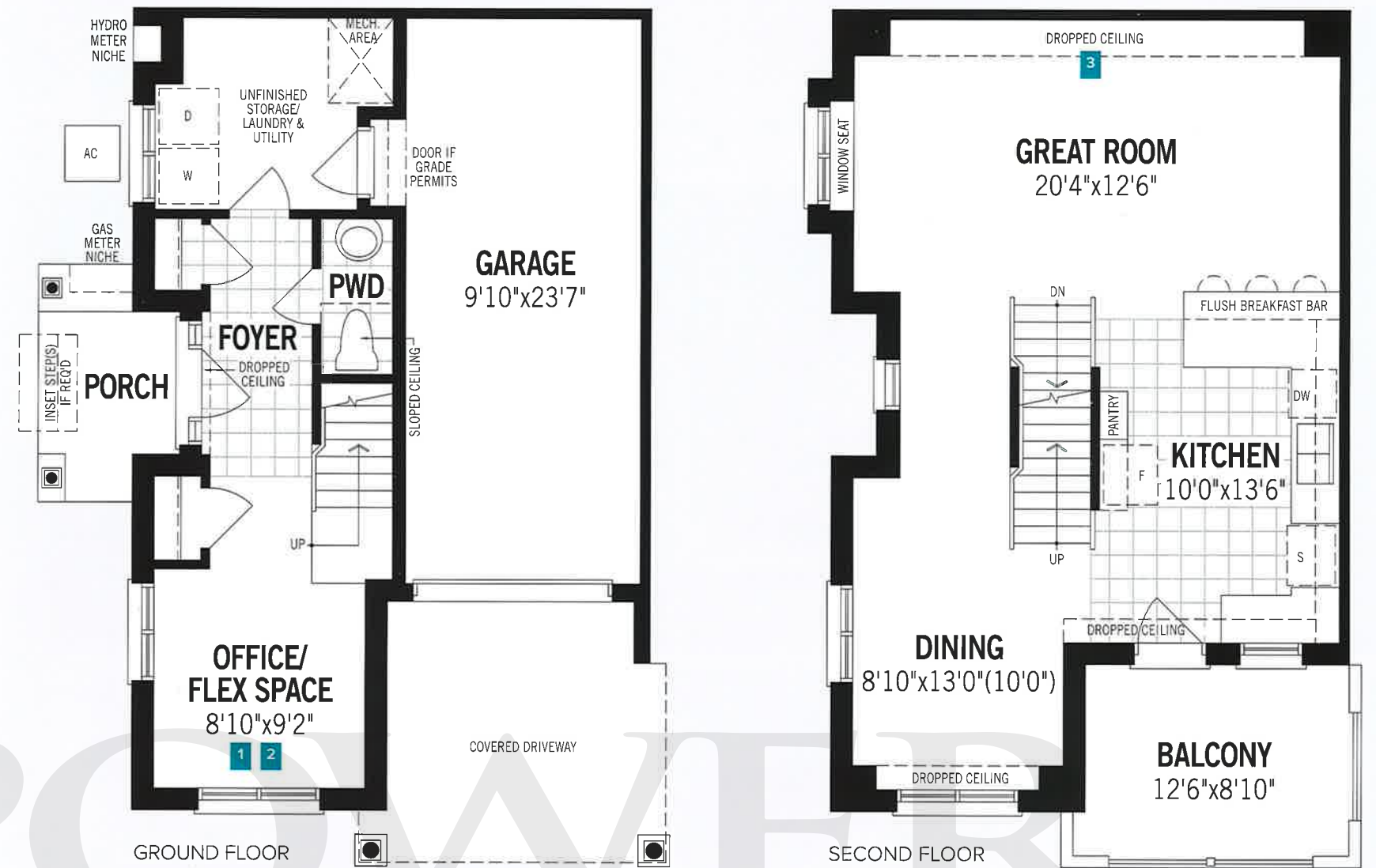
SECOND FLOOR OPTIONS

3 GAS FIREPLACE



THIRD FLOOR OPTIONS

4 SUPER SHOWER IN ENSUITE



BVHF All illustrations are artist's concept. Specifications, terms and conditions are subject to change without notice. These floor plans and room dimensions apply to the 'French Chateau' elevation of this model type. Note that plans and room dimensions may vary according to elevation. Plan may be built as the mirror image. *Quiet wall* (where shown) means a wall in which additional insulation has been installed. This will assist in reducing, but not eliminating, ambient sound from adjoining rooms and mechanical systems. The extent of the reduction will vary depending upon various factors including, without limitation, the presence and extent of mechanical systems located in the wall. Please consult your sales representative. E.&O.E. March 2017. Copyright 2017 - Mattamy Homes Limited.

VILLAGE HOMES

THE TWEED END

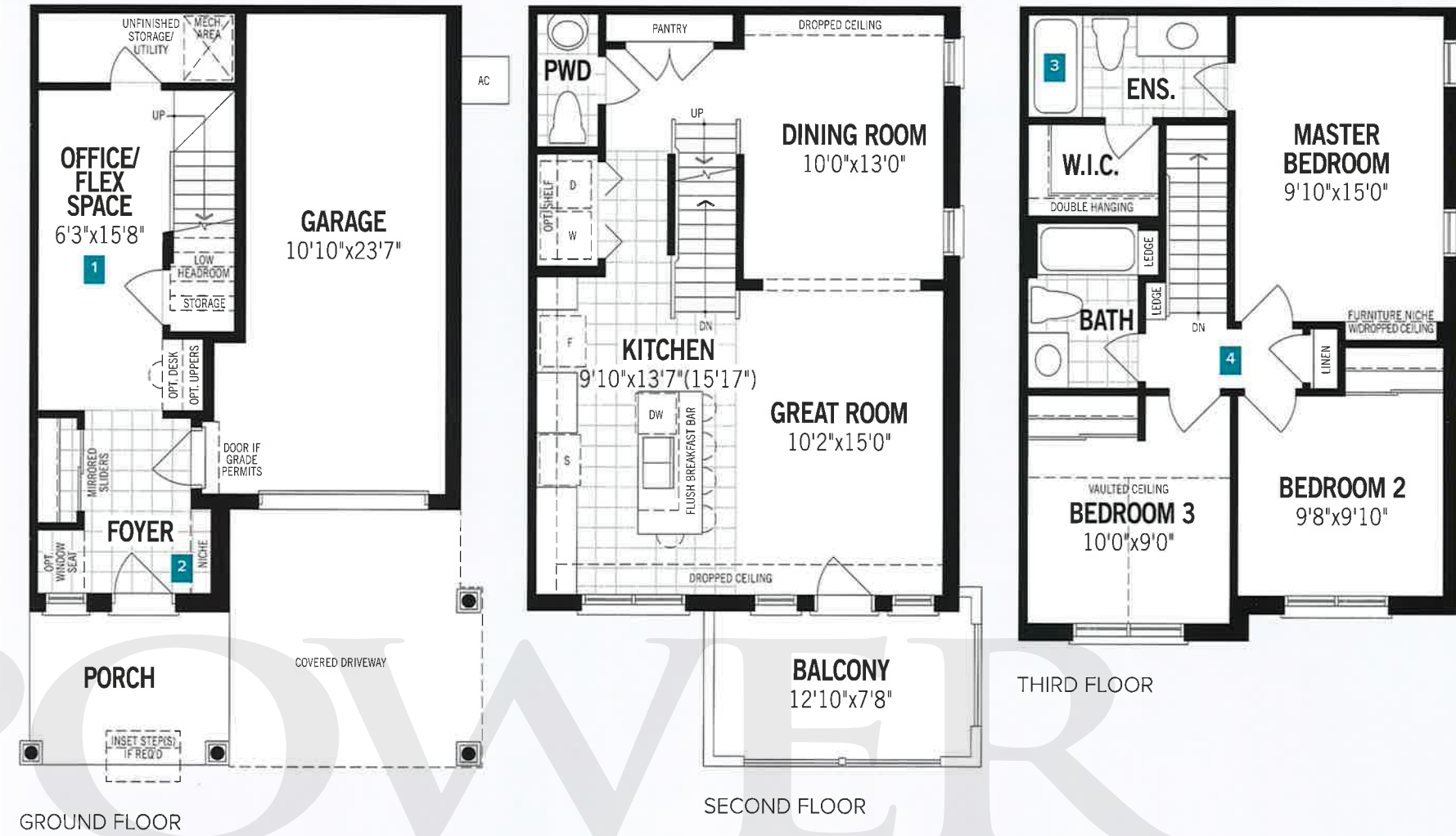
1,541 sq.ft



FRENCH CHATEAU



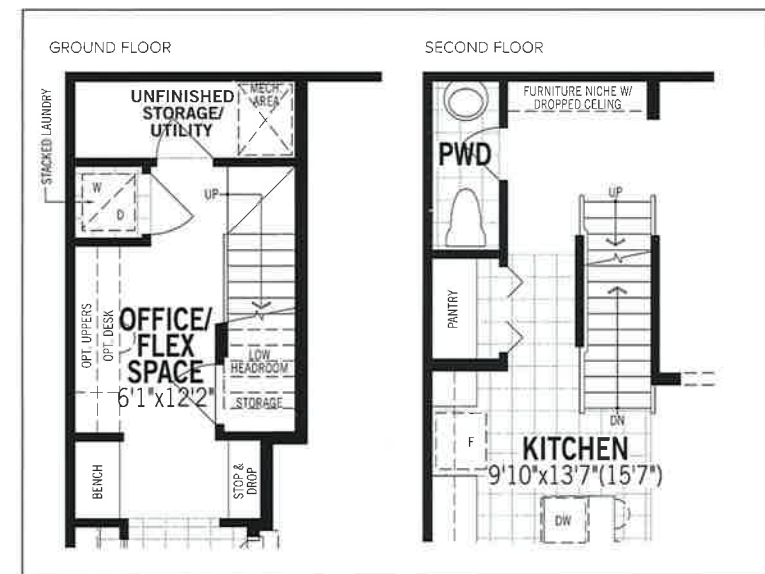
ENGLISH MANOR



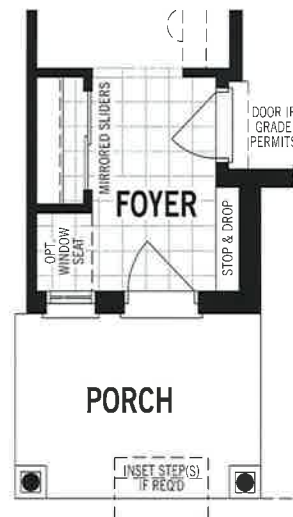
Architect's Choice Options

GROUND FLOOR OPTIONS

1 ALTERNATE OFFICE/FLEX SPACE (LAUNDRY RELOCATED TO GROUND FLOOR)



2 STOP & DROP IN LIEU OF NICHE

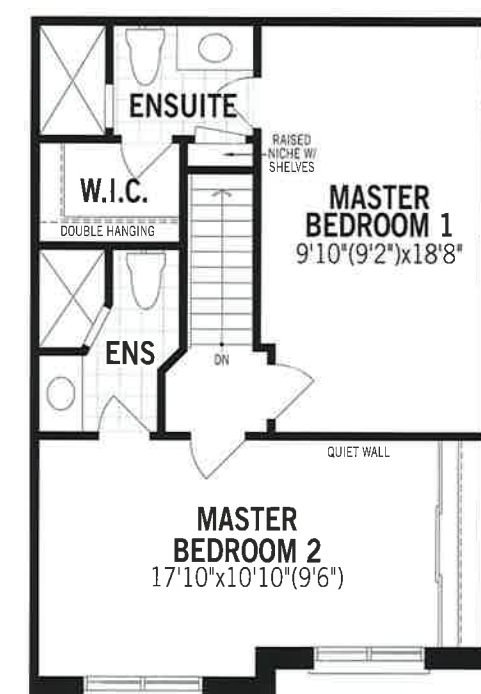


THIRD FLOOR OPTIONS

3 SUPER SHOWER IN ENSUITE



4 DOUBLE MASTER BEDROOMS



BVHH All illustrations are artist's concept. Specifications, terms and conditions are subject to change without notice. These floor plans and room dimensions apply to the 'French Chateau' elevation of this model type. Note that plans and room dimensions may vary according to elevation. Plan may be built as the mirror image. "Quiet wall" (where shown) means a wall in which additional insulation has been installed. This will assist in reducing, but not eliminating, ambient sound from adjoining rooms and mechanical systems. The extent of the reduction will vary depending upon various factors including, without limitation, the presence and extent of mechanical systems located in the wall. Please consult your sales representative. E & O E. March 2017. Copyright 2017 - Mattamy Homes Limited.

VILLAGE HOMES

THE TANSLEY

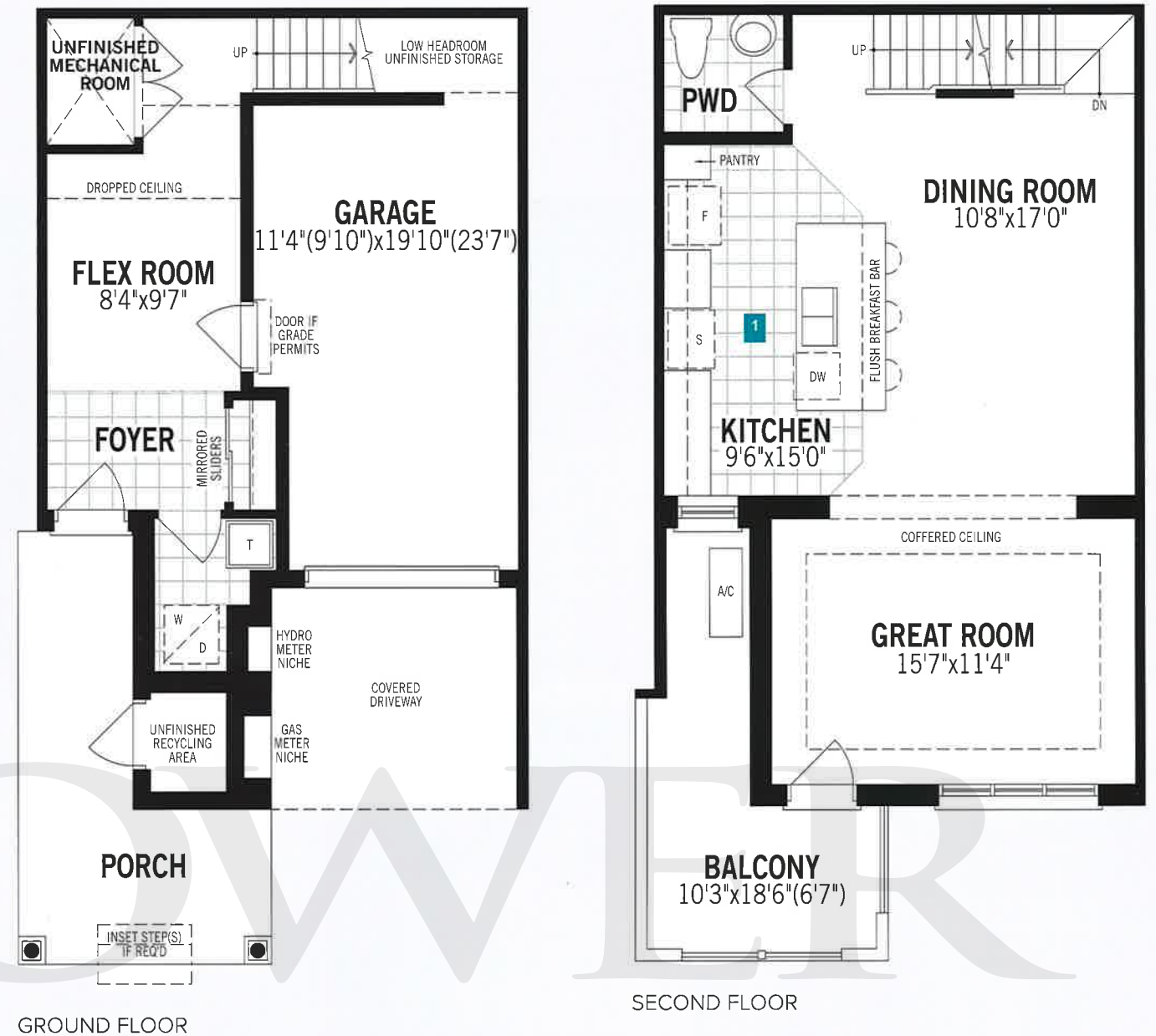
1,547 sq.ft



ENGLISH MANOR



FRENCH CHATEAU



GROUND FLOOR

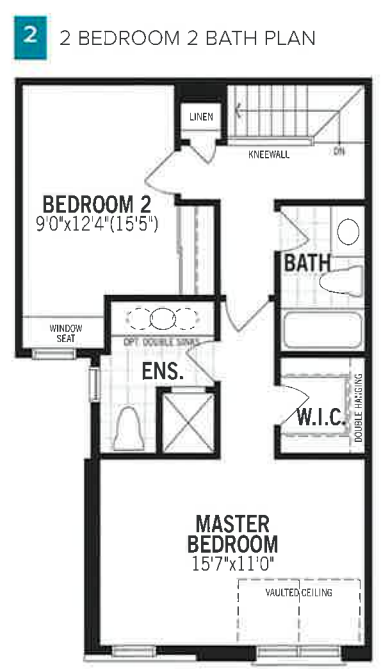
SECOND FLOOR

Architect's Choice Options

SECOND FLOOR OPTIONS



THIRD FLOOR OPTIONS



THIRD FLOOR

BVHG All illustrations are artist's concept. Specifications, terms and conditions are subject to change without notice. These floor plans and room dimensions apply to the 'English Manor' elevation of this model type. Note that plans and room dimensions may vary according to elevation. Plan may be built as the mirror image. "Quiet wall" (where shown) means a wall in which additional insulation has been installed. This will assist in reducing, but not eliminating, ambient sound from adjoining rooms and mechanical systems. The extent of the reduction will vary depending upon various factors including, without limitation, the presence and extent of mechanical systems located in the wall. Please consult your sales representative. E.&O.E. March 2017. Copyright 2017 - Mattamy Homes Limited.

VILLAGE HOMES

THE TWEED END II

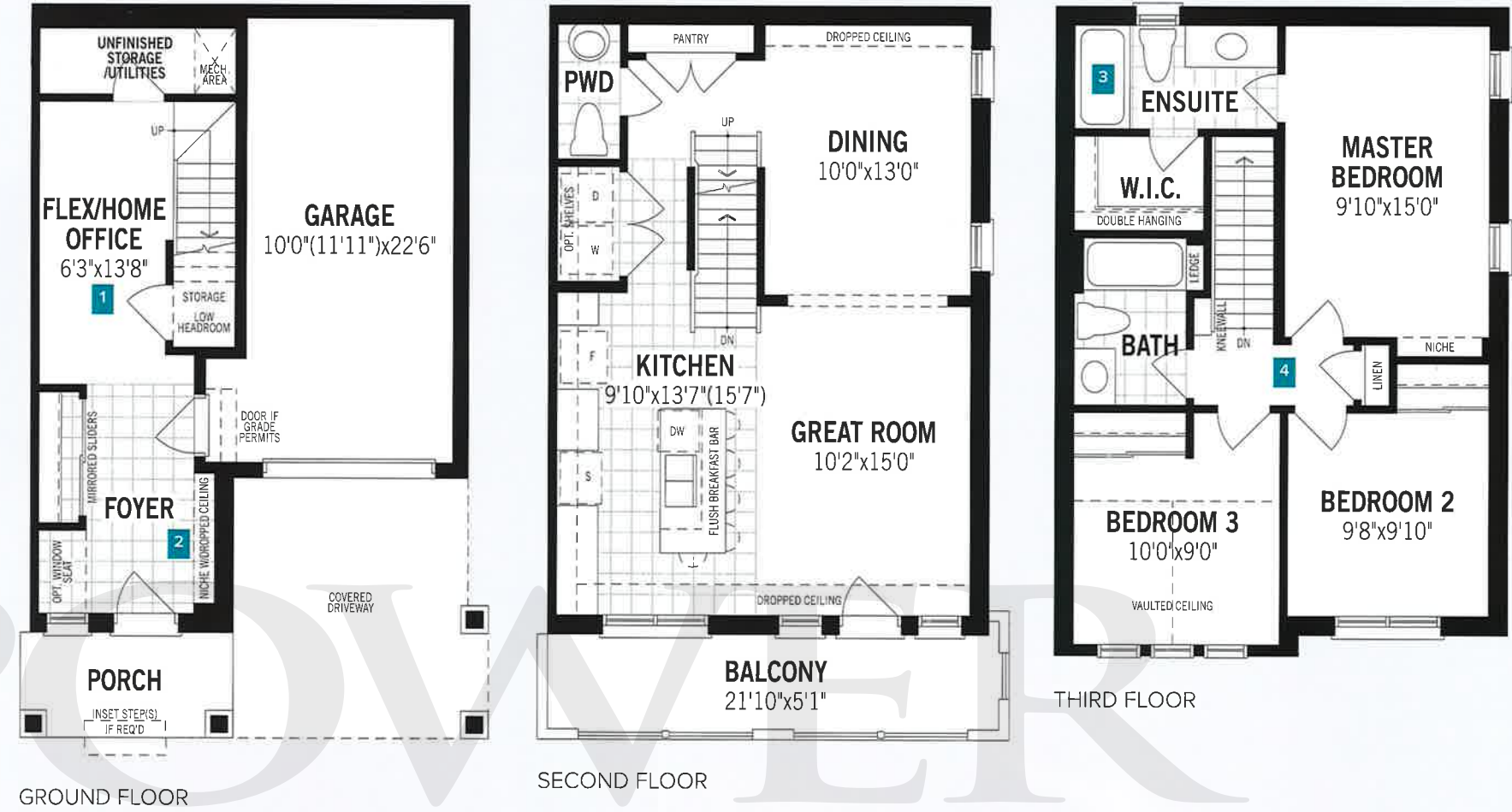
1,562 sq.ft



TUDOR



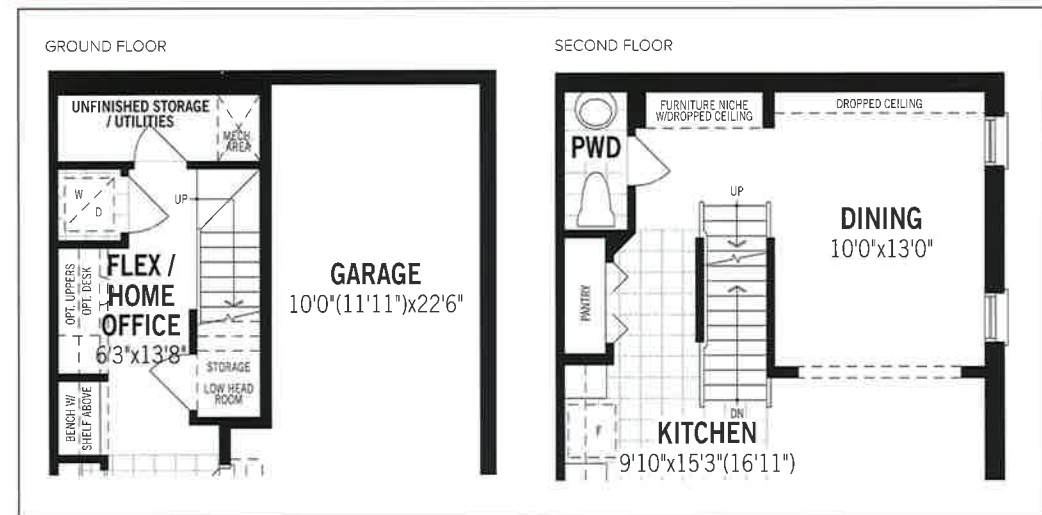
ENGLISH MANOR



Architect's Choice Options

GROUND FLOOR OPTIONS

- 1 ALTERNATE OFFICE/FLEX SPACE (LAUNDRY RELOCATED TO GROUND FLOOR)
- 2 STOP & DROP IN LIEU OF NICHE

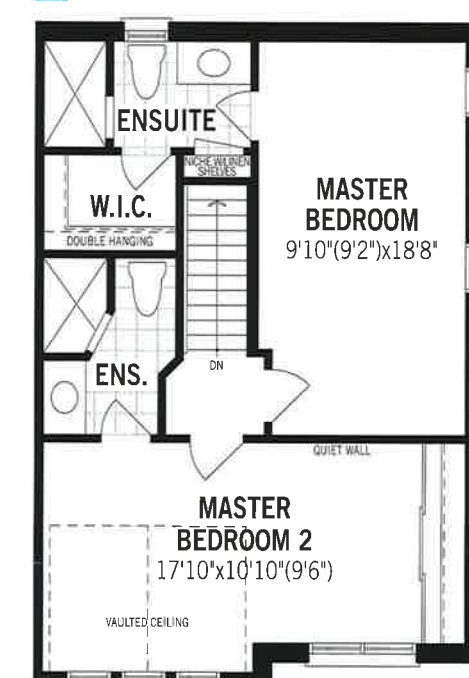
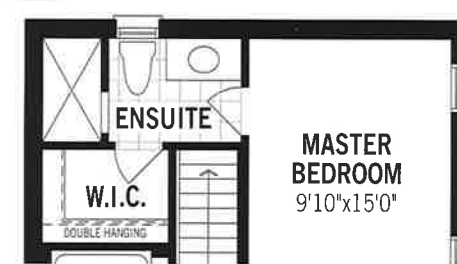


- 2 STOP & DROP IN LIEU OF NICHE



THIRD FLOOR OPTIONS

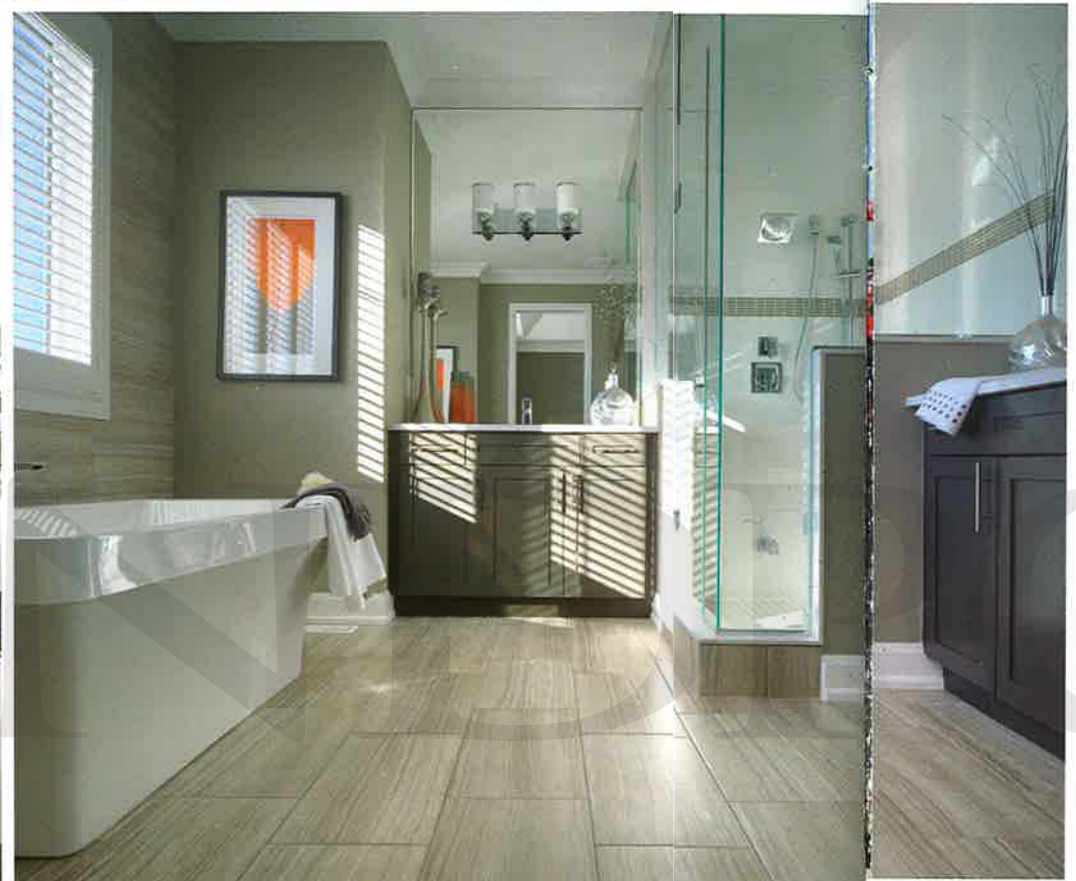
- 3 SUPER SHOWER IN ENSUITE
- 4 DOUBLE MASTER BEDROOMS



AHBC All illustrations are artist's concept. Specifications, terms and conditions are subject to change without notice. These floor plans and room dimensions apply to the "Tudor" elevation of this model type. Note that plans and room dimensions may vary according to elevation. Plan may be built as the mirror image. "Quiet wall" (where shown) means a wall in which additional insulation has been installed. This will assist in reducing, but not eliminating, ambient sound from adjoining rooms and mechanical systems. The extent of the reduction will vary depending upon various factors including, without limitation, the presence and extent of mechanical systems located in the wall. Please consult your sales representative. E.&O.E. March 2017. Copyright 2017 - Mattamy Homes Limited.



LIVE



CHOOSE

Architect's Choice Options let you

LIVE IN THE STYLE OF YOUR CHOICE

At Mattamy, every home and every community is created for people to live well. Thoughtful and sophisticated home design ensures that every living space is as large and as usable as it can possibly be. Windows are generous to admit gorgeous, natural light. Passageways are large and rooms are unobstructed by unnecessary barriers. Of course, homeowners are able to choose their own floorplans and decor options. But there's much more. Mattamy provides a selection of Architect's Choice Options that allow you more ways to personalize your home. You could say we've done your homework for you with all options fully tested by real families under real-life conditions. All in all, these Mattamy exclusive options provide the best value for people who desire more creative choice in how they live.

LANDPOWER

mattamyHOMES

REAL ESTATE LTD. BROKERAGE

MATTAMYHOMES.COM