

# SCENIC

TOWNHOUSES



A day in the life.

Scenic by nature.  
Scenic by design.

Naturally Scenic  
architecture.



[scenicliving.ca](http://scenicliving.ca) | Inspired by nature

  
ASPEN RIDGE  
HOMES



## EAST BUILDING TOWNHOME PRICING

SUITE NUMBER	APPROX. SF*	UNIT TYPE	PRICED AT	MAINTENANCE MONTHLY/EST.*	EXPOSURE
GE01	1410	2B+D	\$630,990	\$692.56	SOUTH
GE02	1459	2B+D	\$640,990	\$716.43	SOUTH
GE03	1414	2B+D	\$630,990	\$691.57	SOUTH
GEO4	1967	3B+D	\$720,990	\$955.57	SOUTH + WEST
GE15	1657	2B+D	\$676,990	\$813.87	SOUTH

## WEST BUILDING TOWNHOME PRICING

SUITE NUMBER	APPROX. SF*	UNIT TYPE	PRICED AT	MAINTENANCE MONTHLY/EST.*	EXPOSURE
GW01	1810	2B+D	\$705,990	\$886.87	SOUTH
GW02	1676	2B+D	\$678,990	\$816.80	SOUTH
GW03	1572	2B+D	\$642,990	\$768.78	SOUTH
GW04	1719	2B+D	\$695,990	\$841.30	SOUTH
GW05	1613	2B+D	\$669,990	\$791.81	SOUTH
GW06	2030	3B+D	\$755,990	\$991.72	SOUTH + WEST

### BUILDING FEATURES

The Scenic lobby redefines the concept of luxury, with floor-to-ceiling glass, 24-hour concierge and stunning interiors. As you enter, the Scenic lobby leads you to all the amenities; the Scenic Party Room that spills out onto a terrace; the Family Zone for you and your kids to enjoy; Scenic Sanctuary which includes a pool, dry sauna and a lounge; Scenic Gym that also has yoga/personal training rooms that overlook Sunnybrook Park.

### SPECTACULAR AREA AMENITIES

Overlooking Sunnybrook Park, you are connected to walking trails throughout Toronto. Shopping, theatres, restaurants, subway are all minutes away at Yonge and Eglinton.

PROJECTED OCCUPANCY - APRIL 2013; ESTIMATED TAXES JUST LESS THAN 1% OF THE PURCHASE PRICE

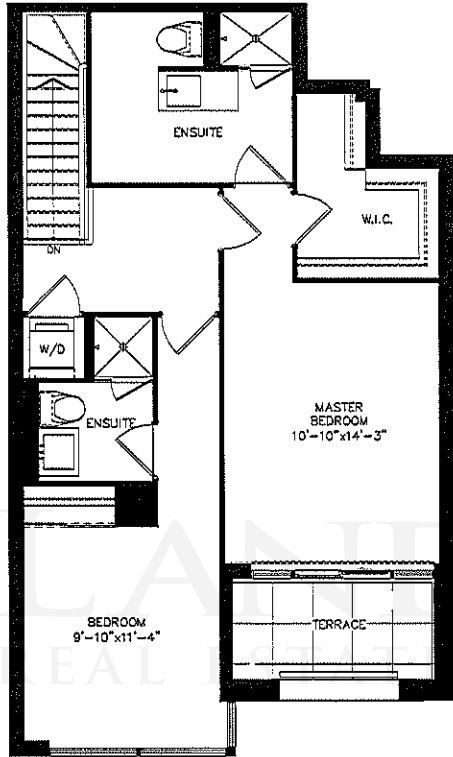
PRICES INCLUDE FEDERAL GOODS AND SERVICES TAX AND PROVINCIAL SALES TAX

<p>DEPOSIT STRUCTURE 5% WITH OFFER 5% IN 90 DAYS 5% ON OCCUPANCY</p> <p>ALL CHEQUES MUST BE SUBMITTED WITH OFFER, VIA POST DATED CHEQUE</p>
---

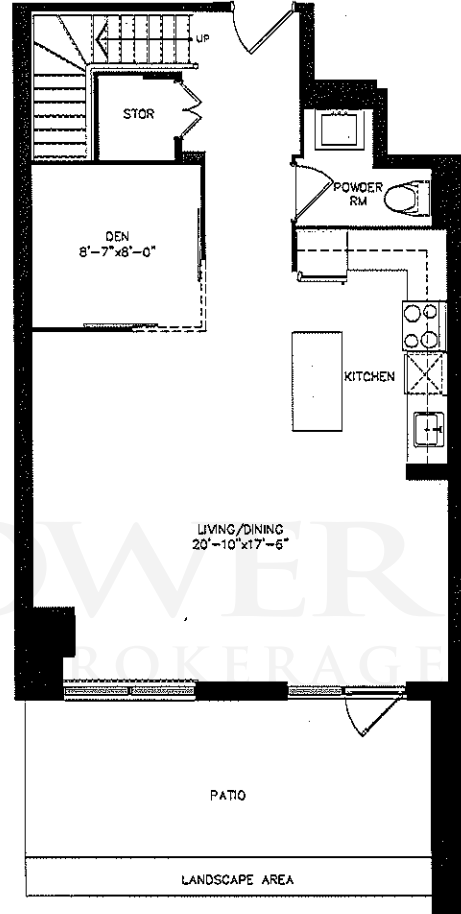
<p>MAINTENANCE \$0.49/SQ.FT. (HYDRO METERED SEPARATELY)</p> <p>LOCKER - \$3,000 EST. MAINTENANCE FEE: \$9.95/MONTH</p> <p>ONE PARKING INCLUDED EST. MAINTENANCE FEE: \$34.95/MONTH</p>
--



ALL PRICES, FIGURES, AND MATERIALS ARE PRELIMINARY AND ARE SUBJECT TO CHANGE WITHOUT NOTICE E. & O.E. ALL AREAS AND STATED ROOM DIMENSIONS ARE APPROXIMATE. ACTUAL LIVING AREA WILL VARY FROM FLOOR AREA STATED. FEBRUARY 18, 2012



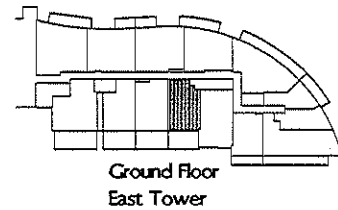
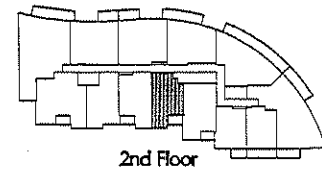
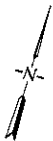
2nd Floor Area: 689 Sq.Ft.

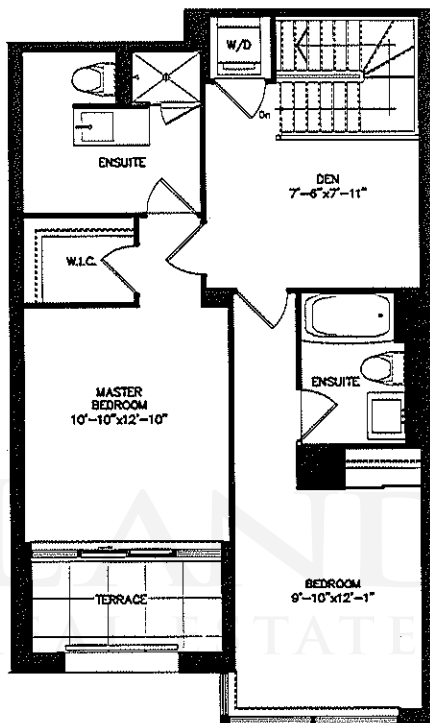


Ground Floor Area: 721 Sq.Ft.

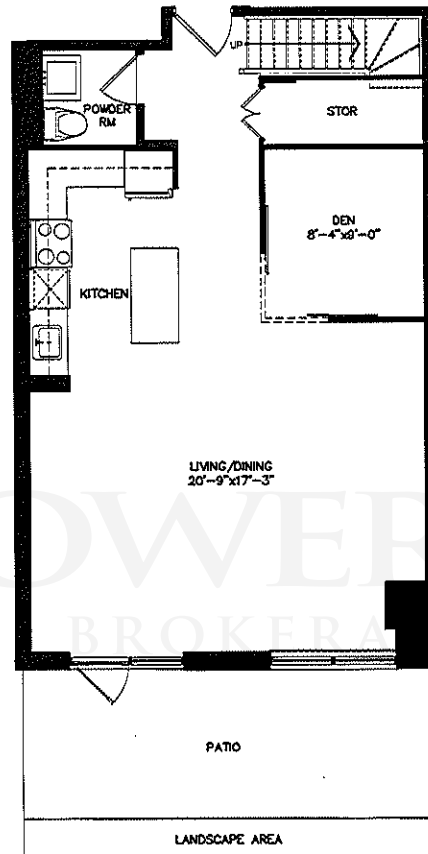
**2 BEDROOM+DEN  
SUITE GE01**

Total Suite Area: 1410 Sq.Ft.





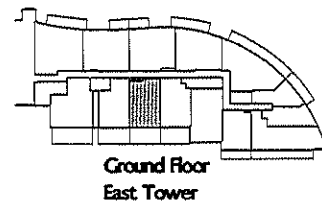
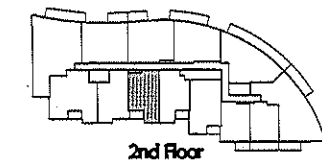
2nd Floor Area: 713 SqFt.

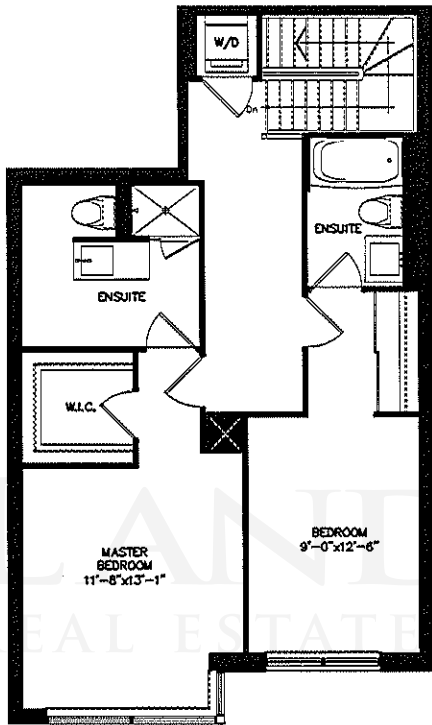


Ground Floor Area: 746 SqFt.

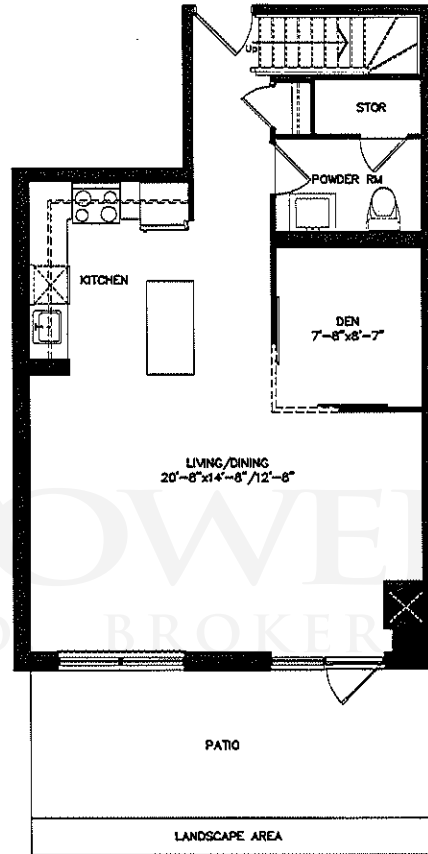
**2 BEDROOM+DEN  
SUITE GE02**

Total Suite Area: 1459 SqFt.





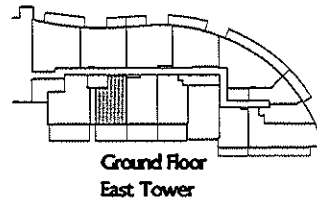
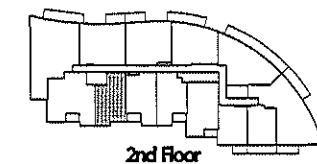
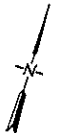
2nd Floor Area: 721 Sq.Ft.

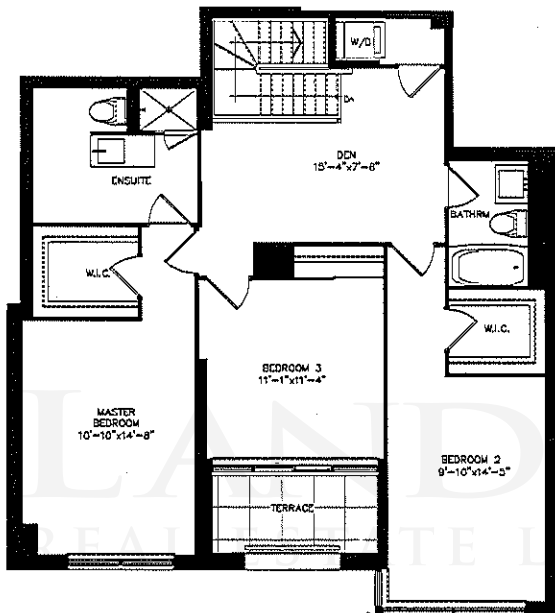


Ground Floor Area: 693 Sq.Ft.

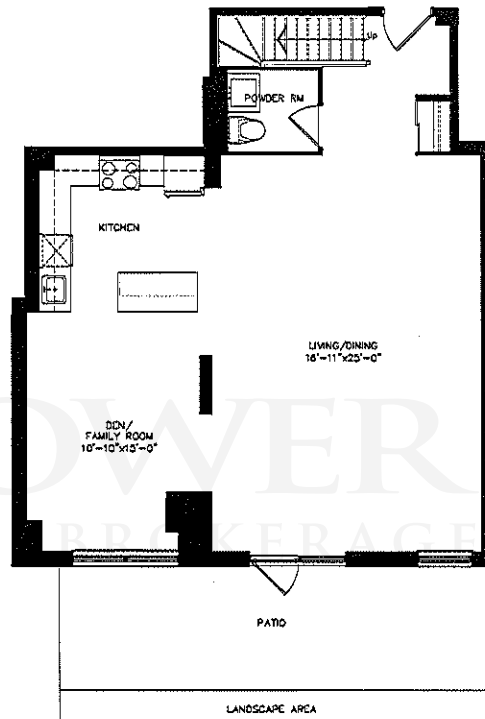
**2 BEDROOM+DEN  
SUITE GE03**

Total Suite Area: 1414 Sq.Ft.





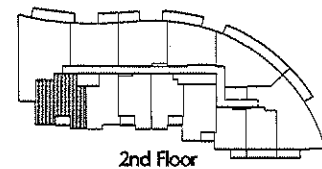
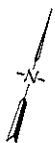
2nd Floor Area: 1043 Sq.Ft.



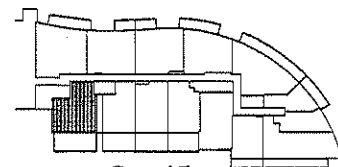
Ground Floor Area: 924 Sq.Ft.

**3 BEDROOM+DEN  
SUITE GE04**

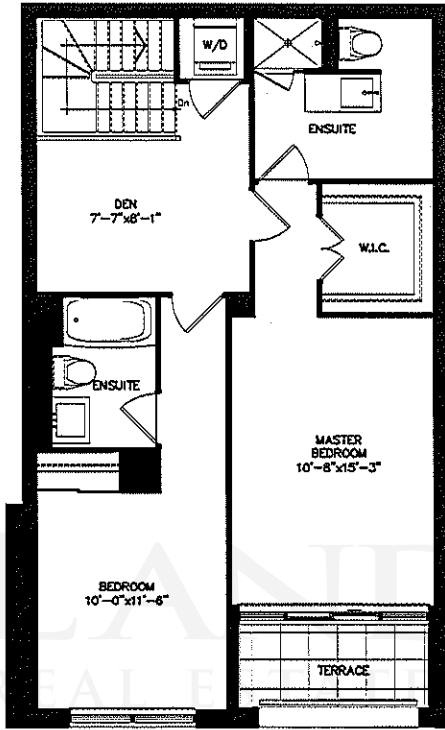
Total Suite Area: 1967 Sq.Ft.



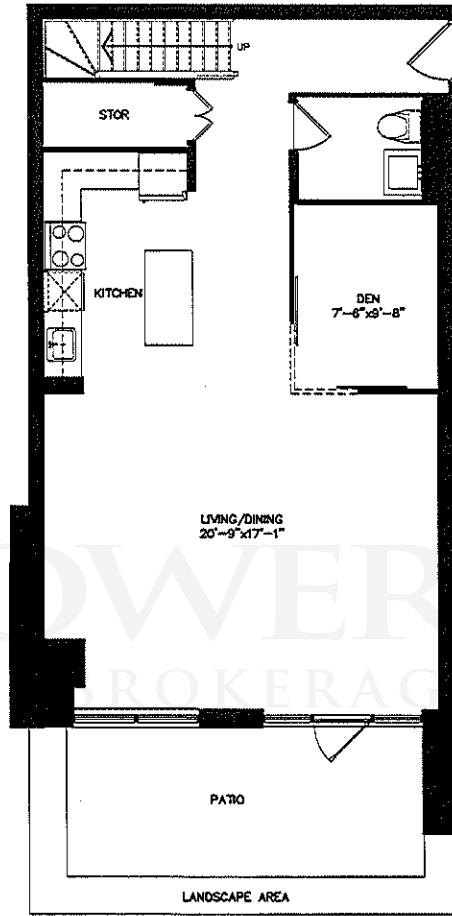
2nd Floor



Ground Floor  
East Tower



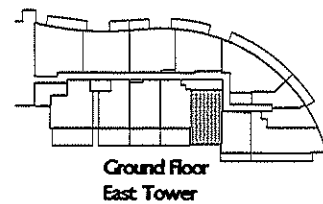
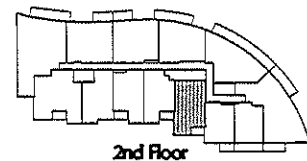
2nd Floor Area: 801 Sq.Ft.

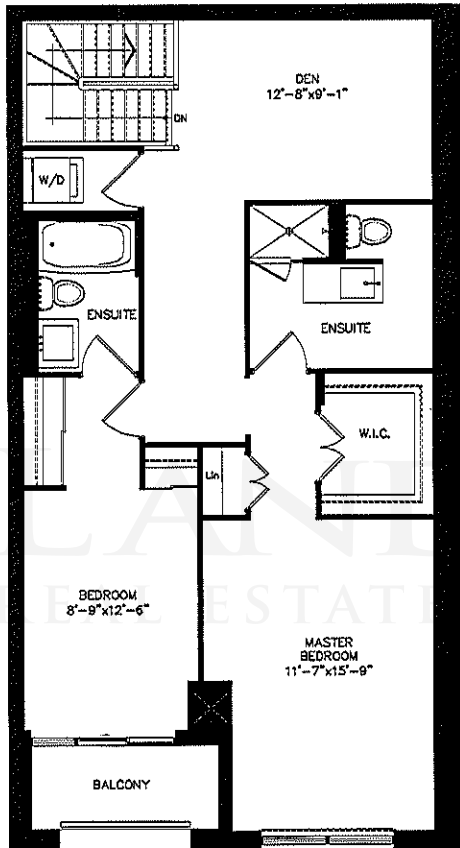


Ground Floor Area: 856 Sq.Ft.

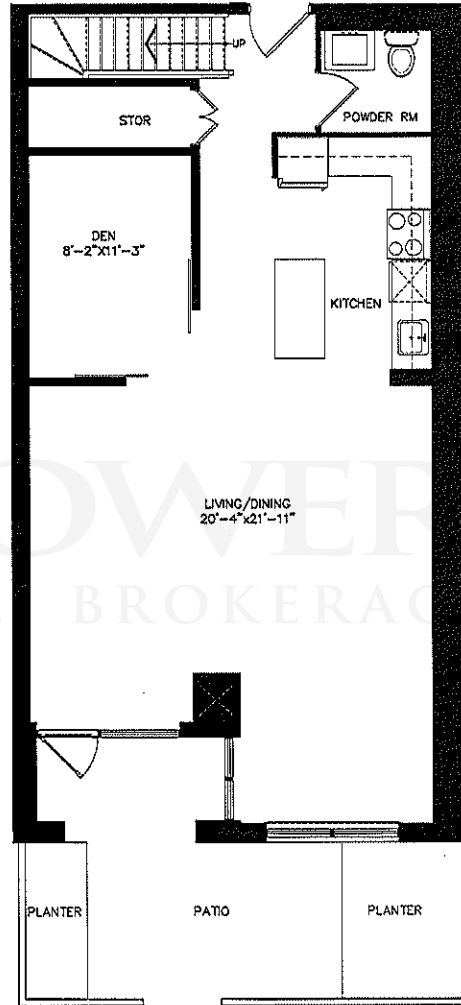
**2 BEDROOM+DEN  
SUITE GE15**

Total Suite Area: 1657 Sq.Ft.

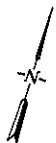




2nd Floor Area: 908 Sq.Ft.

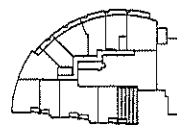


Ground Floor Area: 902 Sq.Ft.

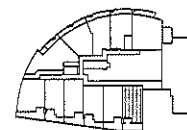


**2 BEDROOM + DEN  
SUITE GW01**

Total Suite Area: 1810 Sq.Ft.

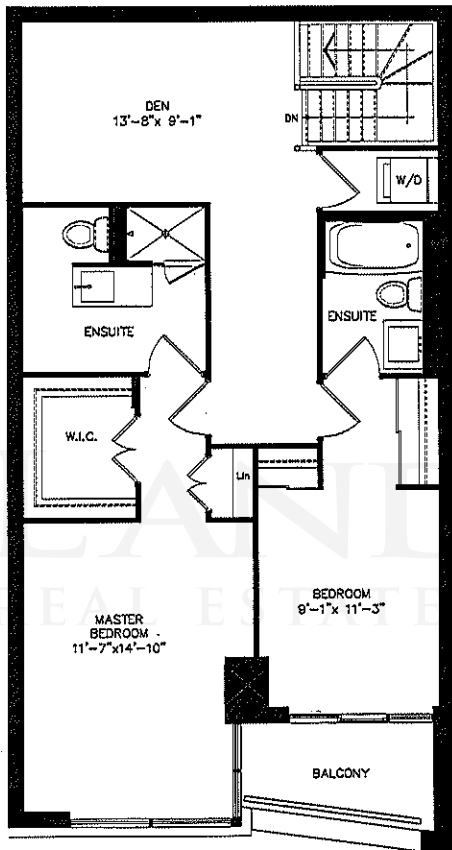


FLOOR: 2

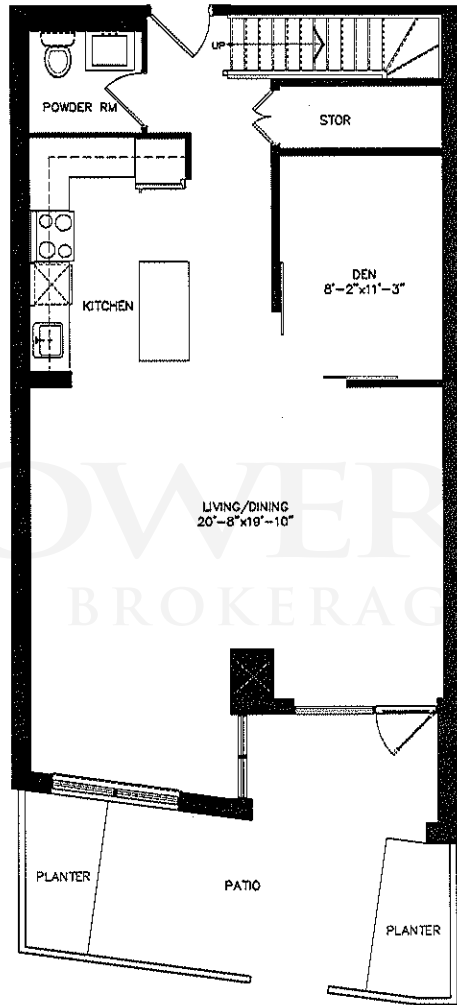


FLOOR: GRD





2nd Floor Area: 845 Sq.Ft.

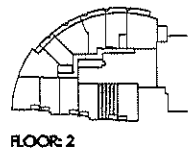


Ground Floor Area: 831 Sq.Ft.

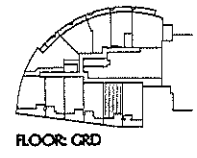


**2 BEDROOM + DEN  
SUITE GW02**

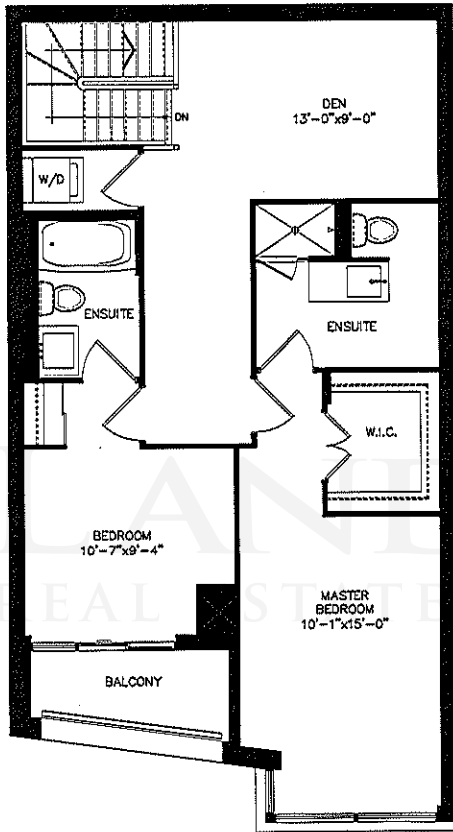
Total Suite Area: 1,676 Sq.Ft.



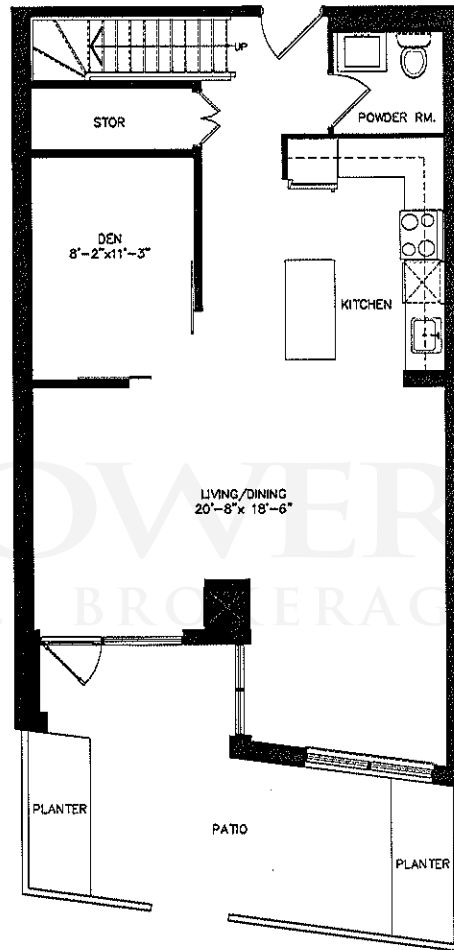
FLOOR: 2



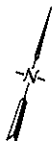
FLOOR: GRD



2nd Floor Area: 799 SqFt.

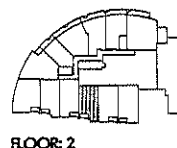


Ground Floor Area: 773 SqFt.

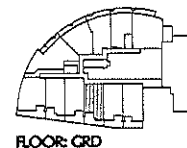


**2 BEDROOM + DEN  
SUITE GW03**

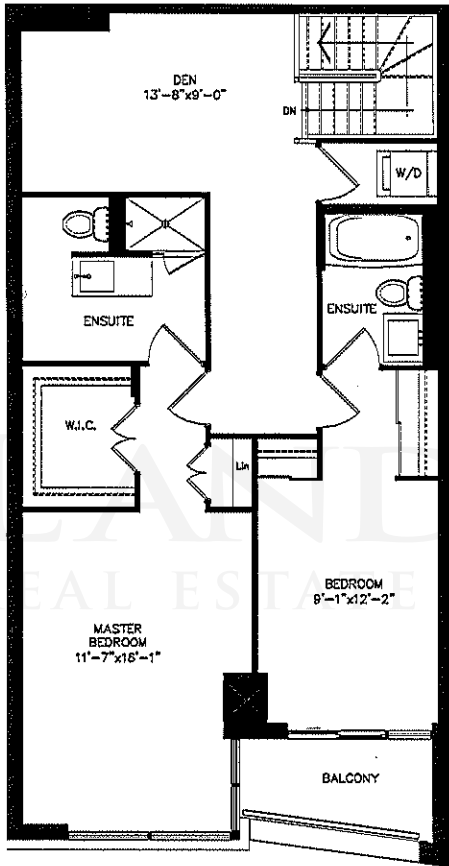
Total Suite Area: 1,572 SqFt.



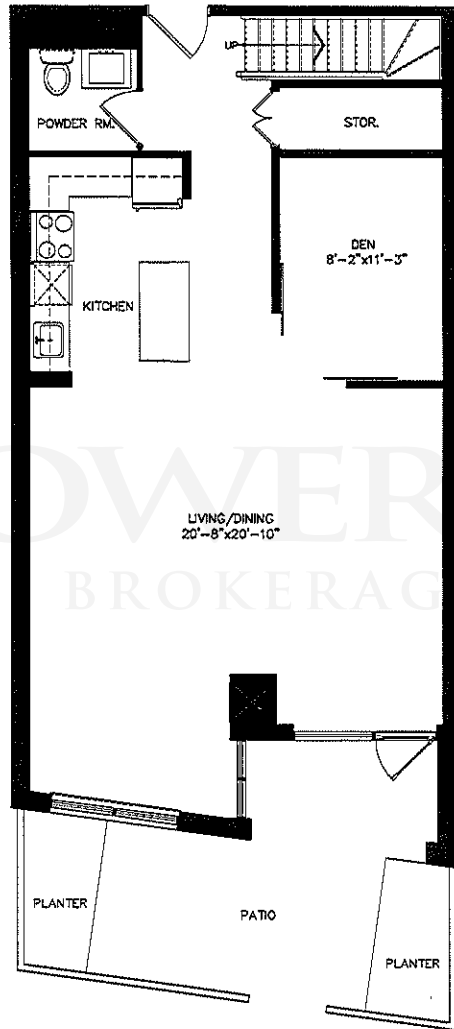
FLOOR: 2



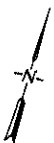
FLOOR: GRD



2nd Floor Area: 863 Sq.Ft.

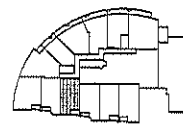


Ground Floor Area: 856 Sq.Ft.

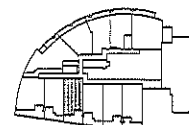


**2 BEDROOM + DEN  
SUITE GW04**

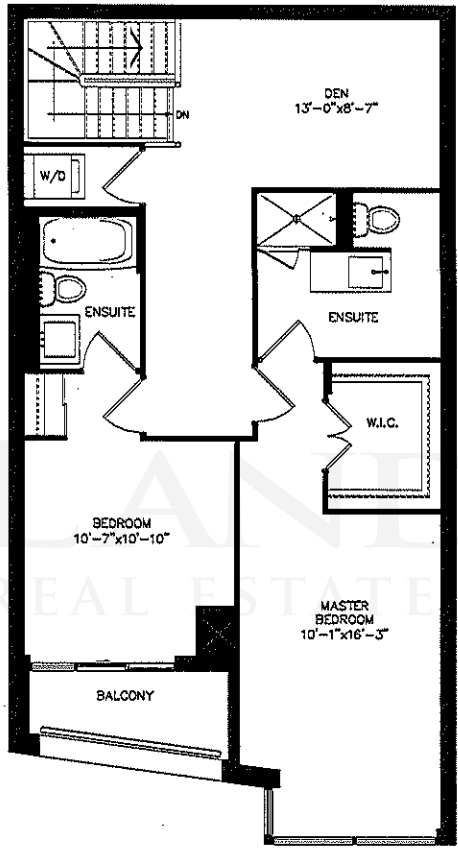
Total Suite Area: 1719 Sq.Ft.



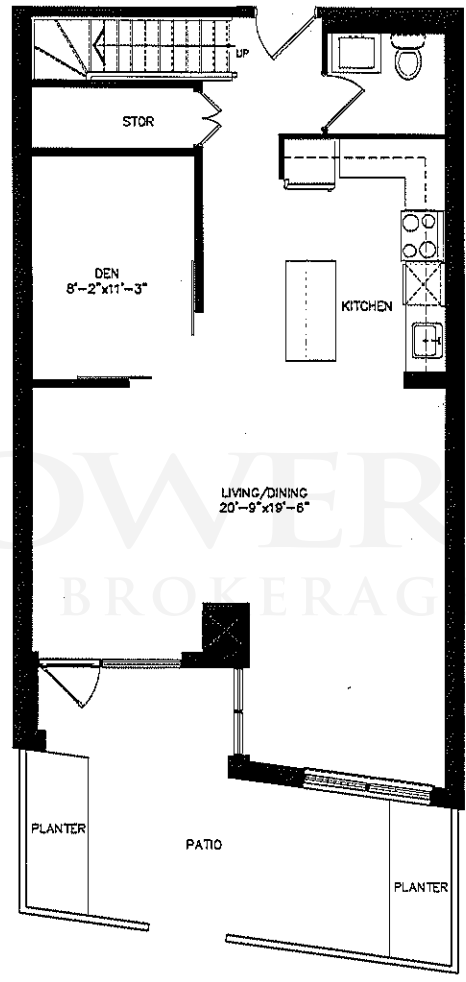
FLOOR: 2



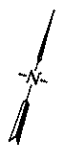
FLOOR: GRD



2nd Floor Area: 816 Sq.Ft.

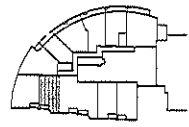


Ground Floor Area: 797 Sq.Ft.

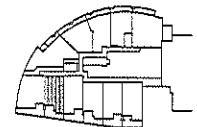


**2 BEDROOM + DEN  
SUITE GW05**

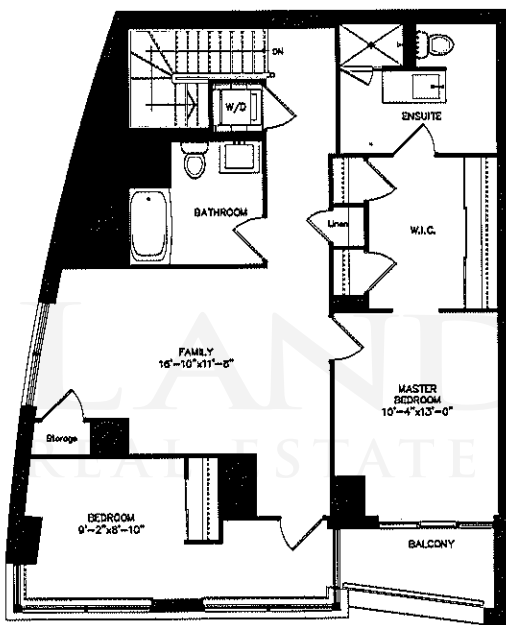
Total Suite Area: 1673 Sq.Ft.



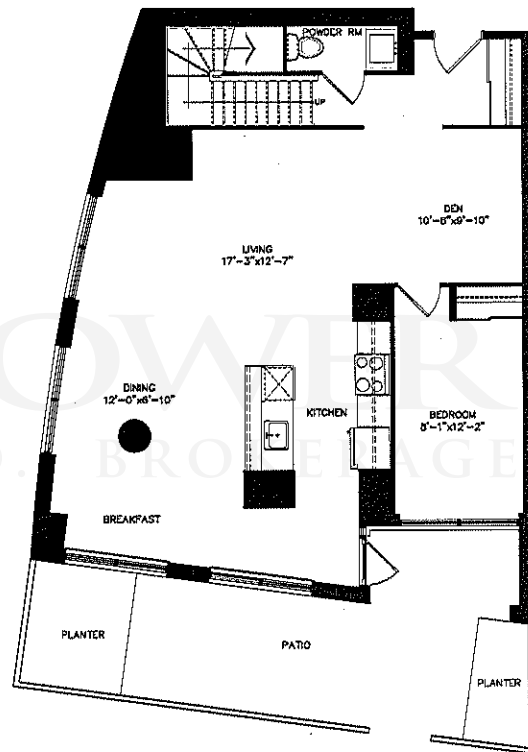
FLOOR: 2



FLOOR: GRD



2nd Floor Area: 1032 Sq.Ft.

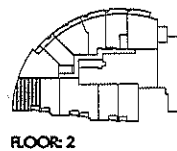


Ground Floor Area: 998 Sq.Ft.

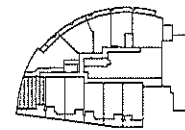


**2 BEDROOM + DEN  
SUITE GW06**

Total Suite Area: 2030 Sq.Ft.



FLOOR: 2



FLOOR: GRD



# LANDPRO

RENTAL



416.805.1781  
scenicliving.ca