



## CASITAS

Location: 5418 Yonge Street (Yonge/Horsham, south of Finch)

Total # of Casitas: 24 Units

Expected Occupancy: Fall 1997

Facilities: Indoor swimming pool, two steam rooms, billiards and more (located inside the tower on share basis)

Maintenance Fees: Estimated to be around \$.20 per sq. ft. excluding hydro and gas, which will be individually metered.

Property Tax: Estimated to be approximately 1.25% of the price per annum based on current rates.

Purchase Price:

Design	Approx. Sq. Ft.	Starting Price
A (Bungalow)	1346	\$272,800
B (3 Storey)	1949	358,800
D (Bungalow)	1670	329,800

\*\*Prices are subject to change without prior notice

Included in Price: GST, fridge, stove, washer/dryer, dishwasher, one parking, ceramic tiles in kitchen and bathrooms, whirlpool in jacuzzi, marble flooring in foyer and master bedroom ensuite, 40 oz. broadloom, central vacuum rough-in and more.

Payment Terms: 5% - signing of agreement; 5% - 60 days from agreement; 5% -90 days from agreement start; 10% - occupancy; 75% - final closing

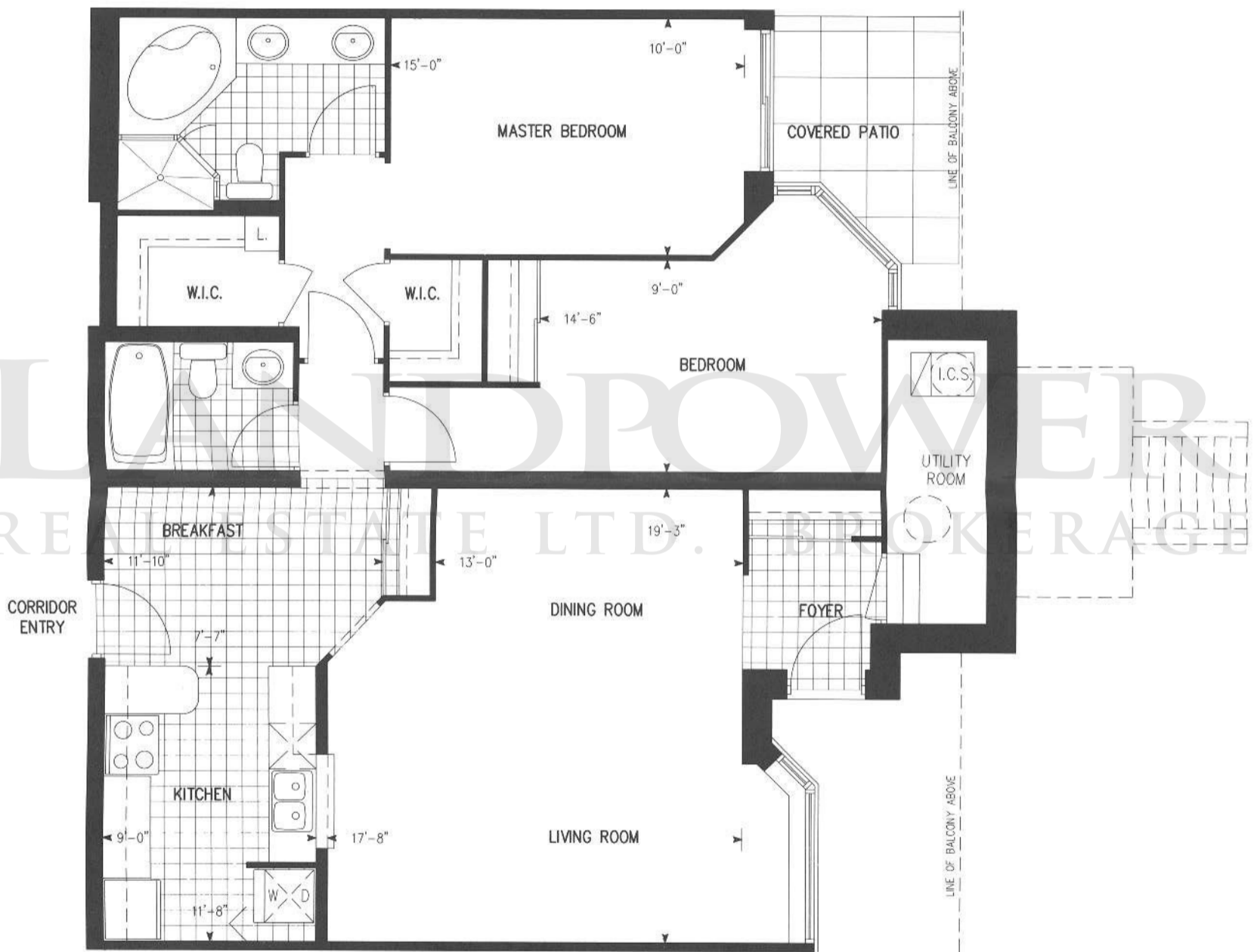
For more information, please contact:  
Helena Wong - mobile (416) 930-8284  
Sheldon Black  
Anita Lee  
Tel: (416) 222--3811  
Fax: (416) 222-0760

July 29, 1996  
E. & O. E.



AT  
NORTHTOWN

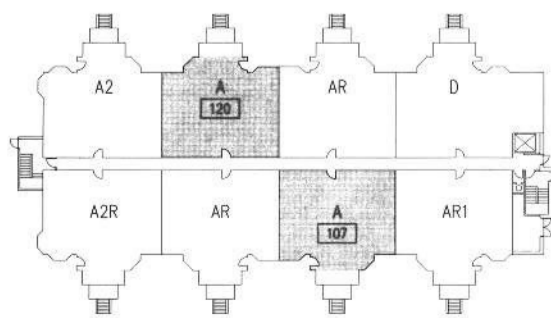
# CASITA A



**BUNGALOW**



**NORTHTOWN**



LEVEL 1



**TRIDEL**

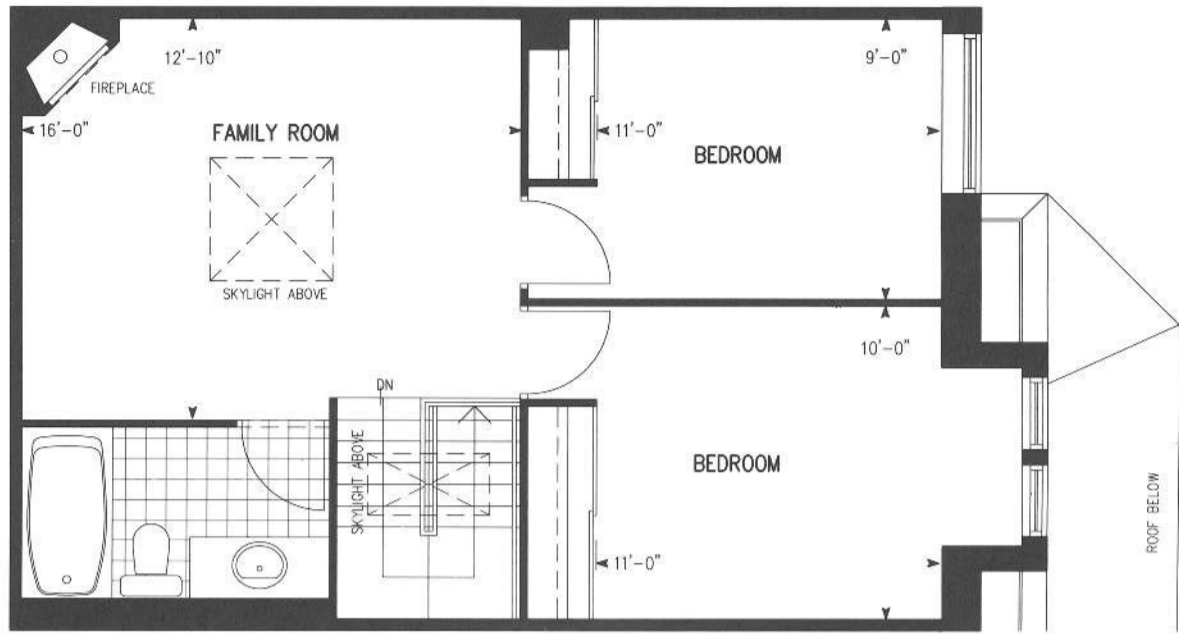
Specifications subject to change without notice. E.&O.E.



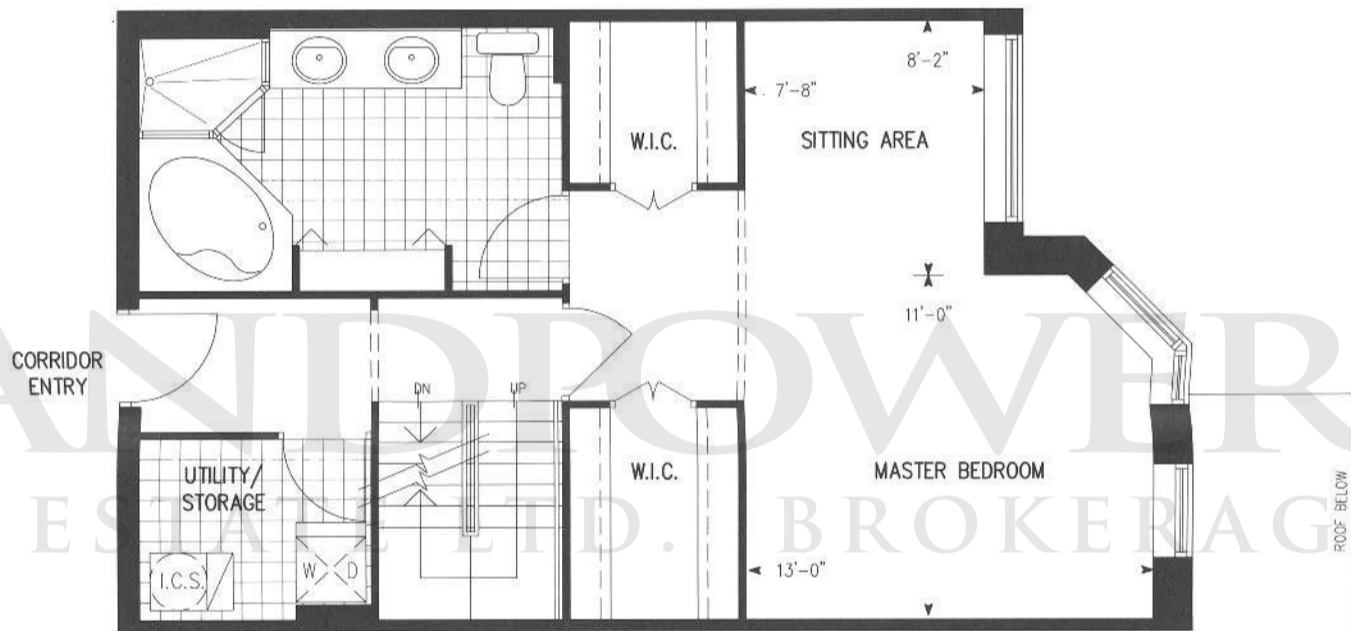
AT  
NORTHTOWN

CASITA B

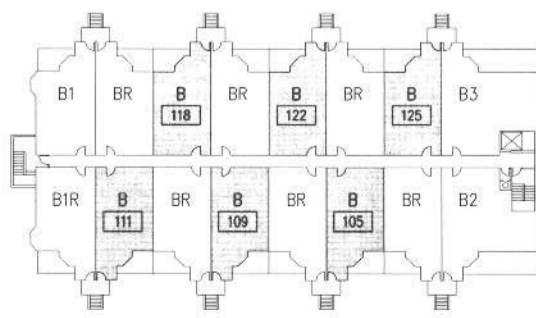
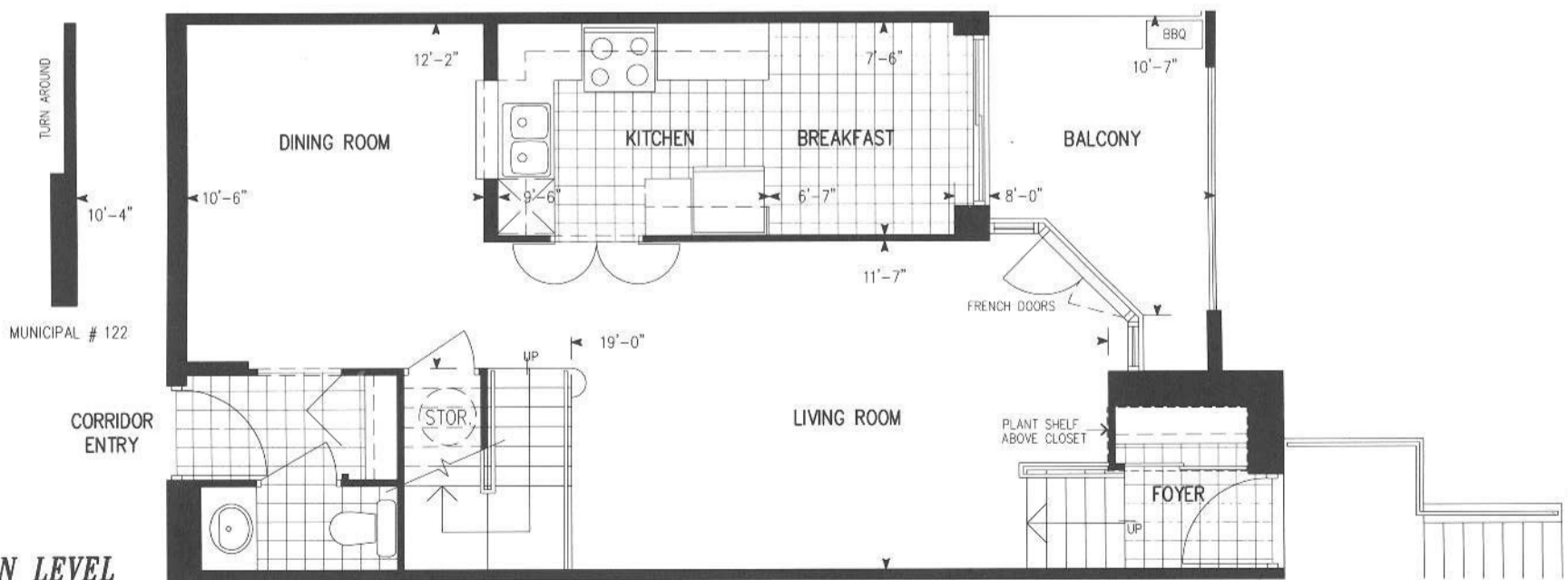
THIRD LEVEL



SECOND LEVEL



MAIN LEVEL



LEGAL LEVEL 2

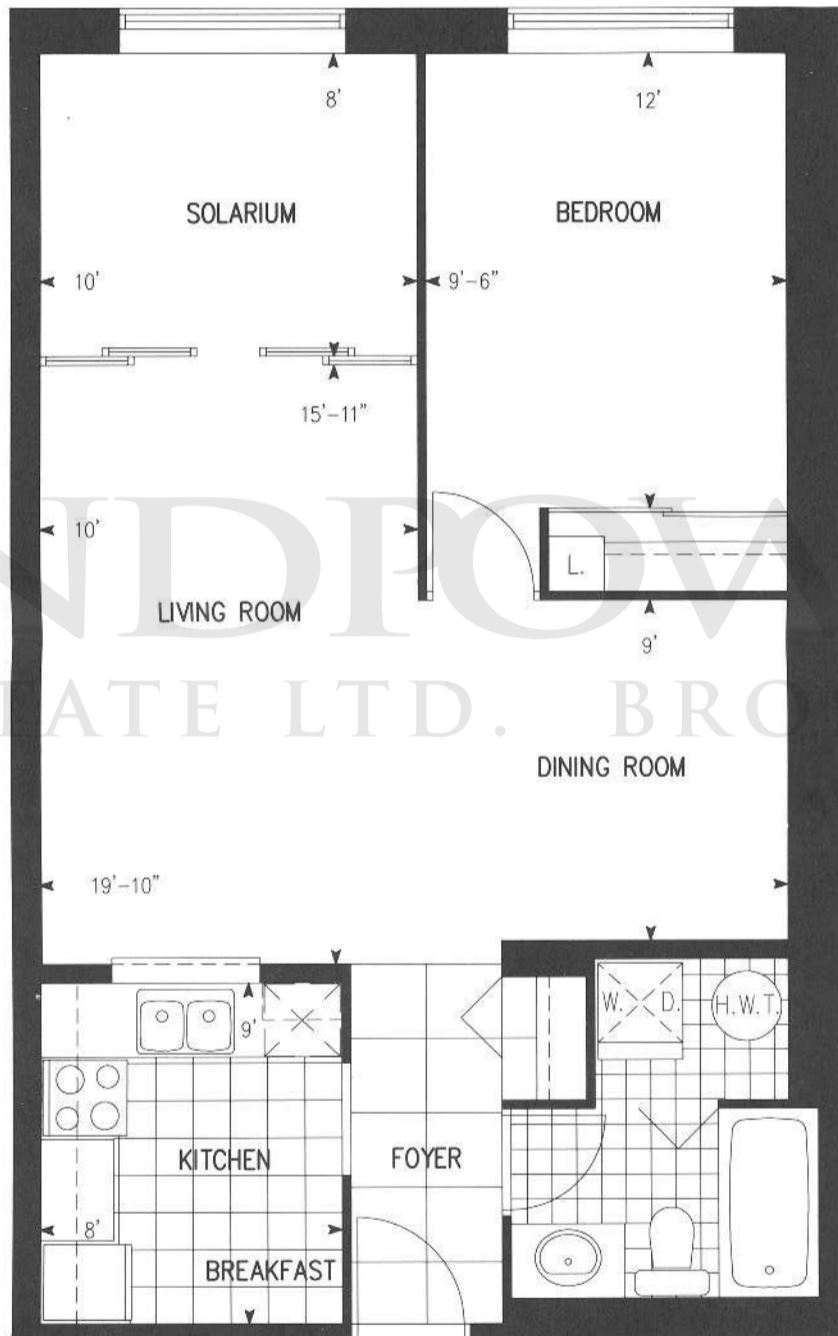


Specifications subject to change without notice. E.&O.E.

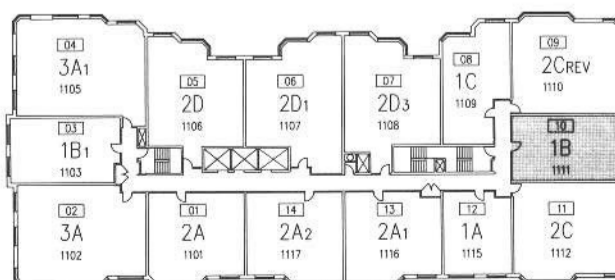


AT  
NORTHTOWN

# SUITE 1B



LANDFLOWER  
REAL ESTATE LTD. BROKERAGE



NORTHTOWN

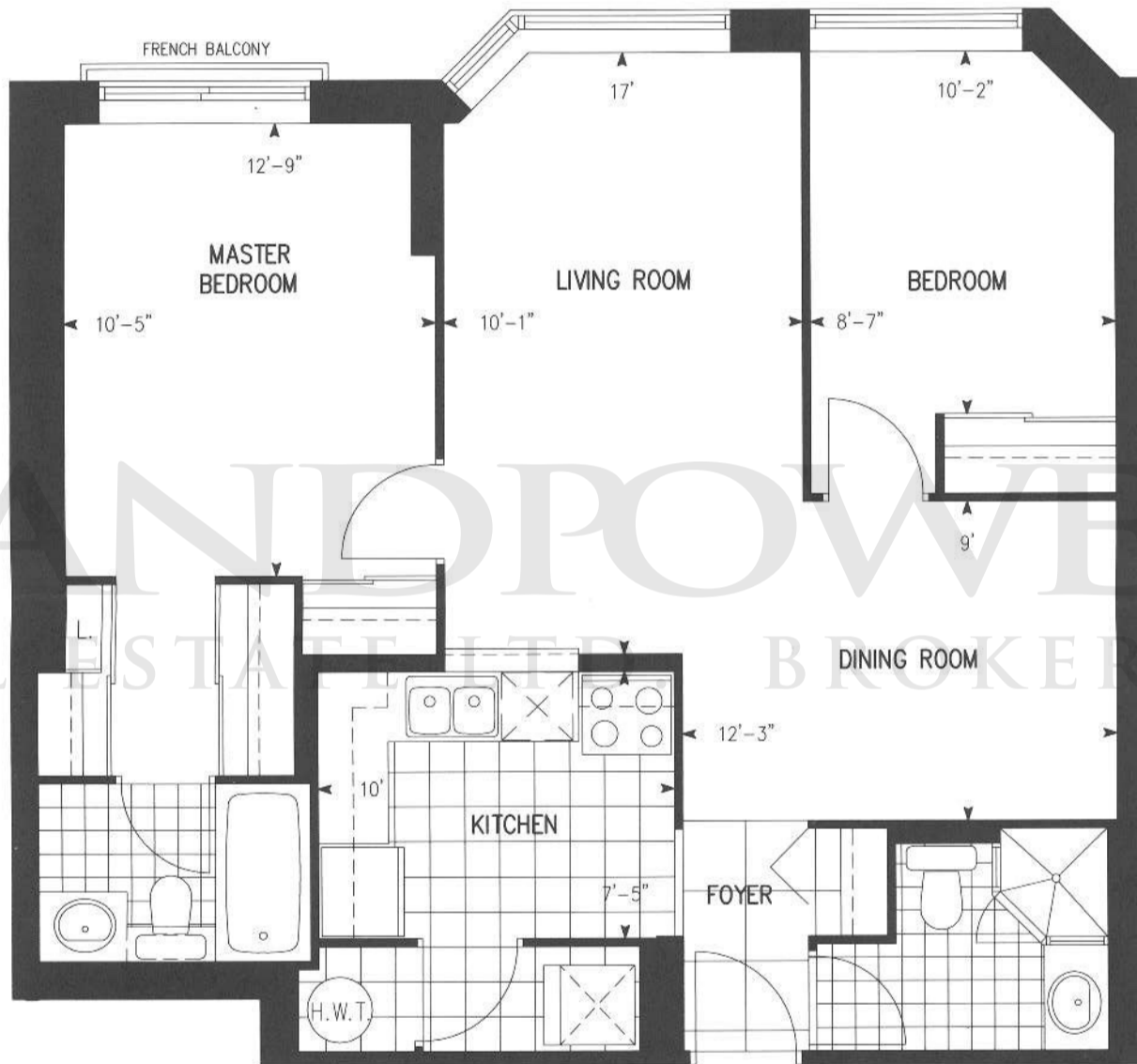
**TRIDEL**<sup>®</sup>

Specifications subject to change without notice. E.&O.E.



AT  
NORTHTOWN

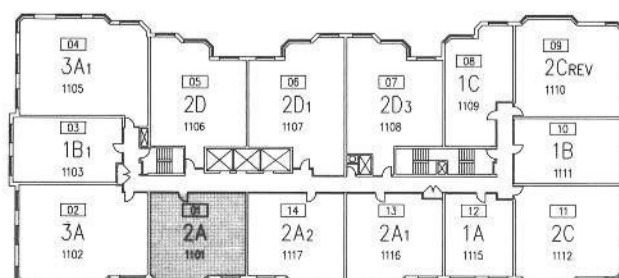
# SUITE 2A



LANDPOWER  
REAL ESTATE LTD. BROKERAGE



NORTHTOWN



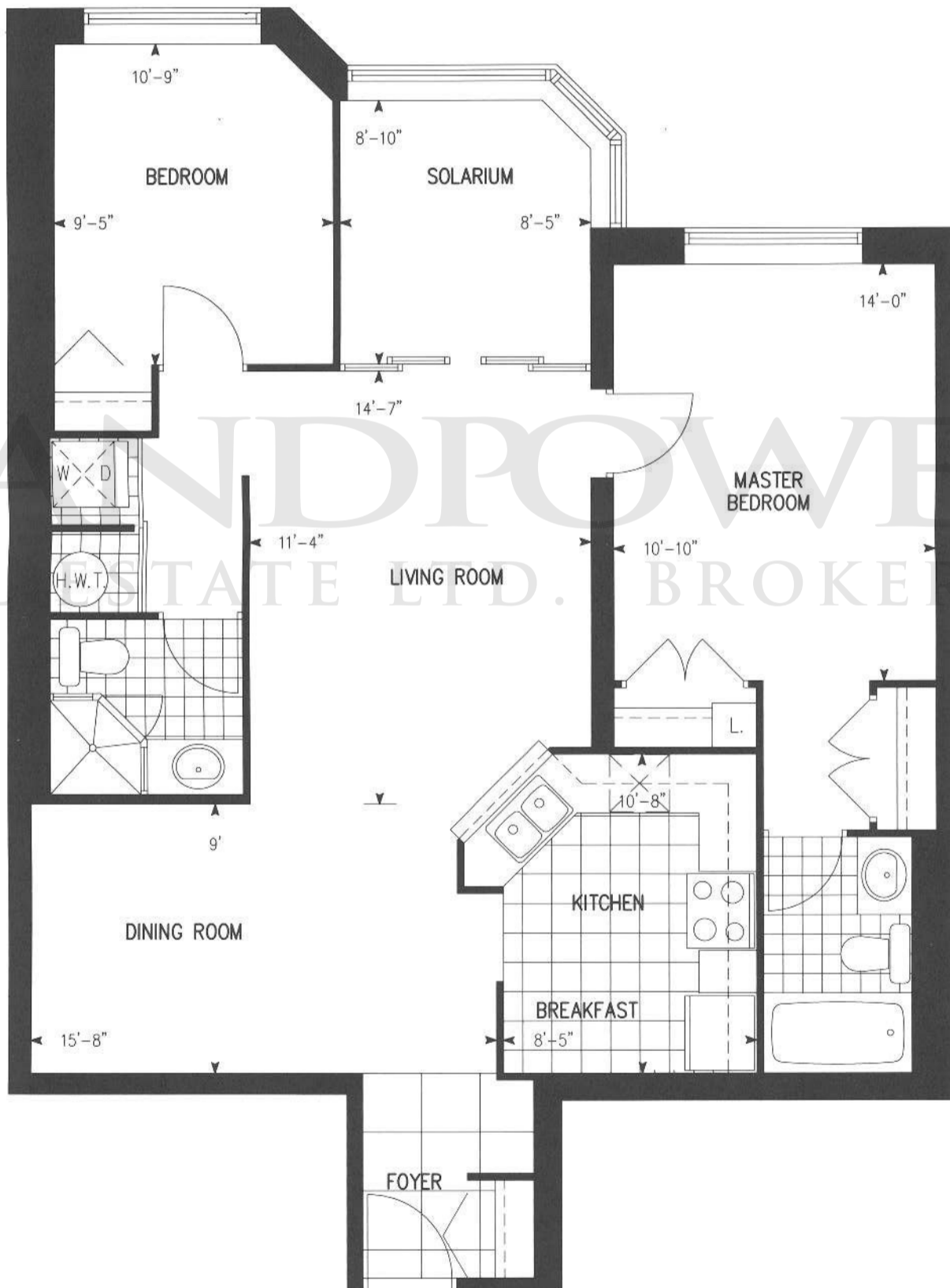
TRIDEL®

Specifications subject to change without notice. E.&O.E.



AT  
NORTHTOWN

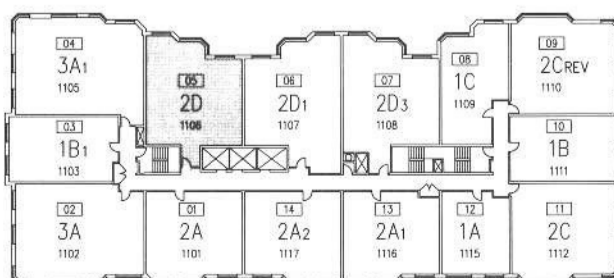
# SUITE 2D



LANDPOWER  
REAL ESTATE LTD. BROKERAGE



NORTHTOWN



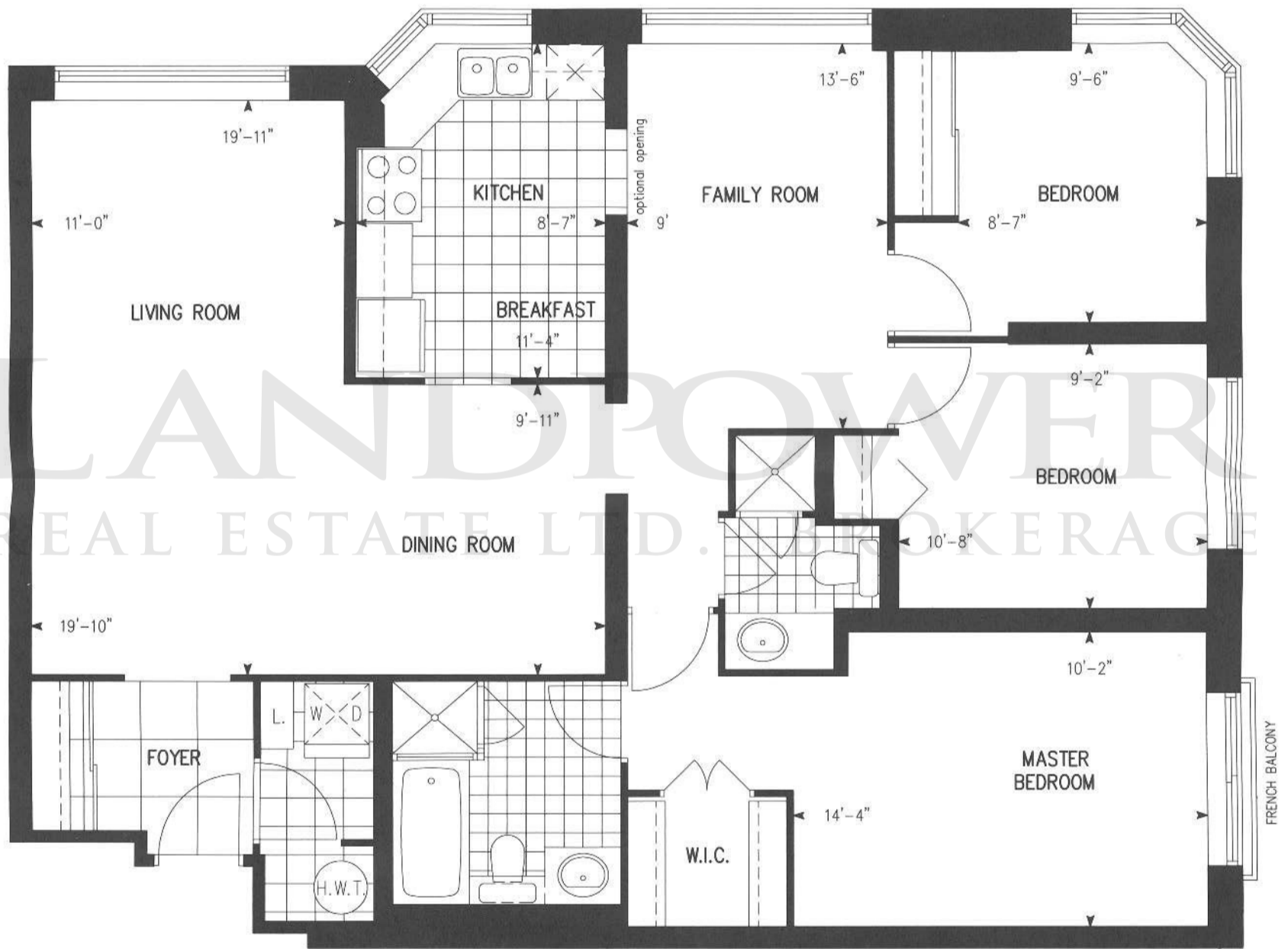
TRIDEL®

Specifications subject to change without notice. E.&O.E.

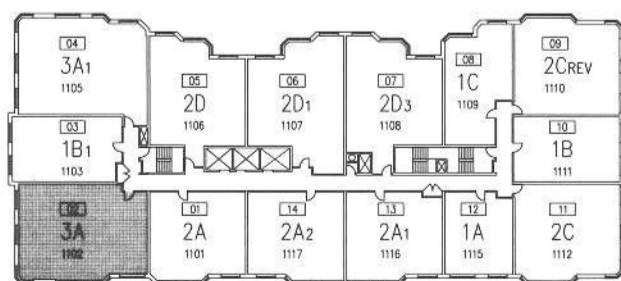


AT  
NORTHTOWN

# SUITE 3A



LANDPOWER  
REAL ESTATE LTD. BROKERAGE



NORTHTOWN

## TRIDEL®

Specifications subject to change without notice. E.&O.E.