



AT  
NORTHTOWN



## ROYAL ARMS

**Location:** 5418 Yonge Street (Yonge/Horsham, south of Finch)

**Total # of Floors:** 22 floors (floors 4, 13, 14, and 24 are omitted, resulting in the highest municipal floor being the 26th floor)

**Total # of Suites:** 230 suites

**Expected Occupancy:** Fall 1997

**Facilities:** Indoor swimming pool, two steam rooms, billiards and more

**Maintenance Fee:** Estimated to be around \$.20 per sq. ft. excluding hydro and gas, which will be individually metered

**Property Tax:** Estimated to be approximately 1.25% of the price per annum

Purchase Price:	Design	Approx. Sq. Ft.	Starting Price
	1A (1b/r)	606	\$150,300
	1B (1b/r) ✓	752	162,300
	1C (1b/r)	776	180,300
	2A (2b/r)	886	200,300
	2B1 (2b/r)	1005	SOLD
	2C (2b/r)	1085	246,300
	2D (2b/r)	1086	229,300
	2D1(2b/r) ✓	1158	244,300
	3A (3b/r) ✓	1319	290,300
	3B (3b/r)	1600	SOLD
	3C (3b/r)	1698	SOLD

\*\*Prices are subject to change without prior notice

**Included in Price:** GST, fridge, stove, washer/dryer, dishwasher, one parking, ceramic tiles in kitchen and bathrooms, marble flooring in foyer, 40 oz. broadloom, verticle blinds and more.

**Payment Terms:** 5% - signing of agreement; 5% - 30 days from notice of construction; 5% - 60 days from notice of construction; 10% - occupancy; 75% - final closing

**Increment per Floor:** \$500.00 per floor; \$5000.00 extra for the penthouse; \*\$1000.00 per floor for Design 3B & 3C; \$5000.00 extra for the penthouse

For more information, please contact:  
 Helena Wong  
 Associate Broker/Site Manager  
 Tel: (416) 736-2631 or Portable: (416) 930-8284

By Appointment Only

November 14/95  
 E. & O.E.

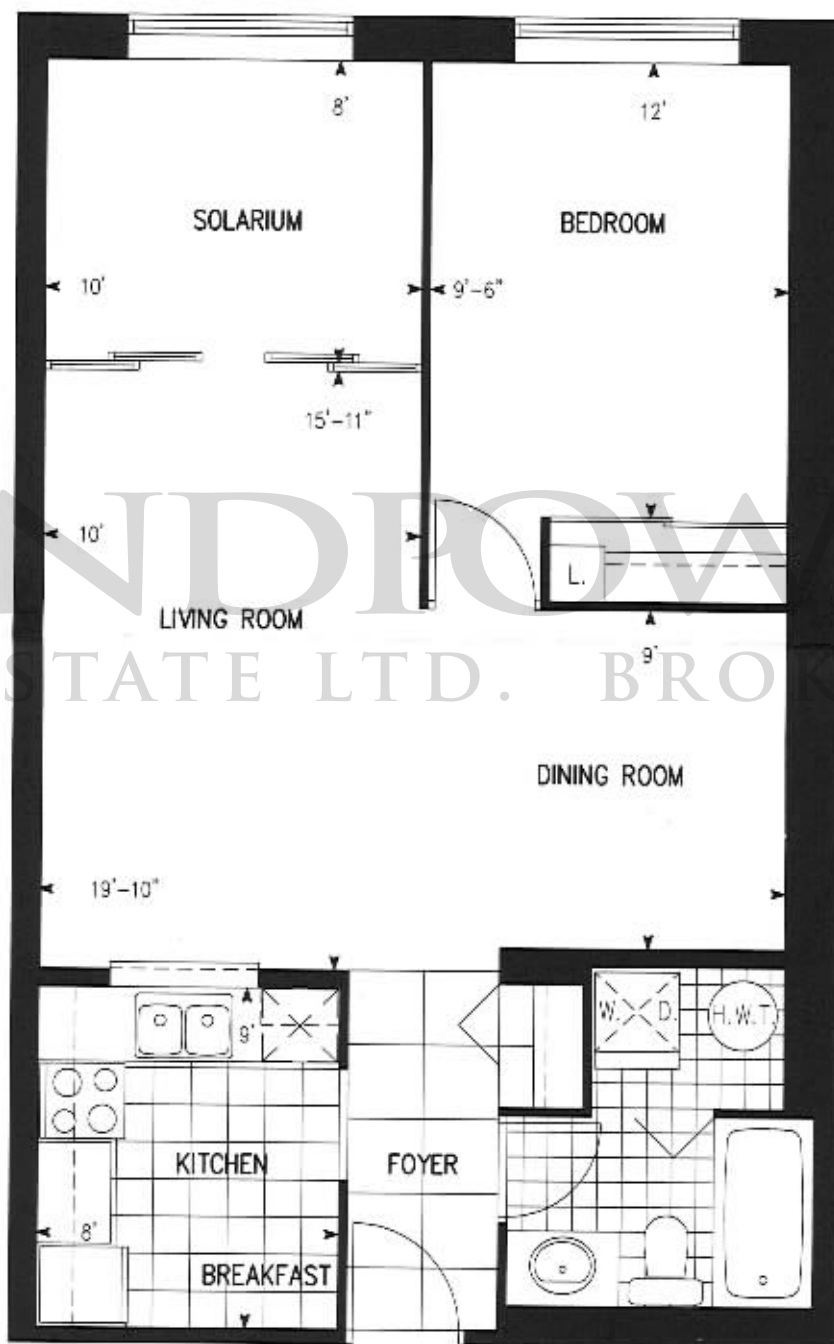
TRIDEL



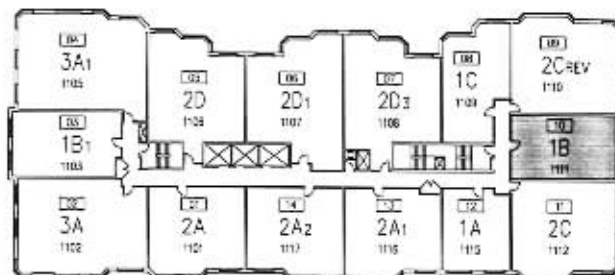


AT  
NORTHTOWN

# SUITE 1B



LANDFLOWER  
REAL ESTATE LTD. BROKERAGE



NORTHTOWN

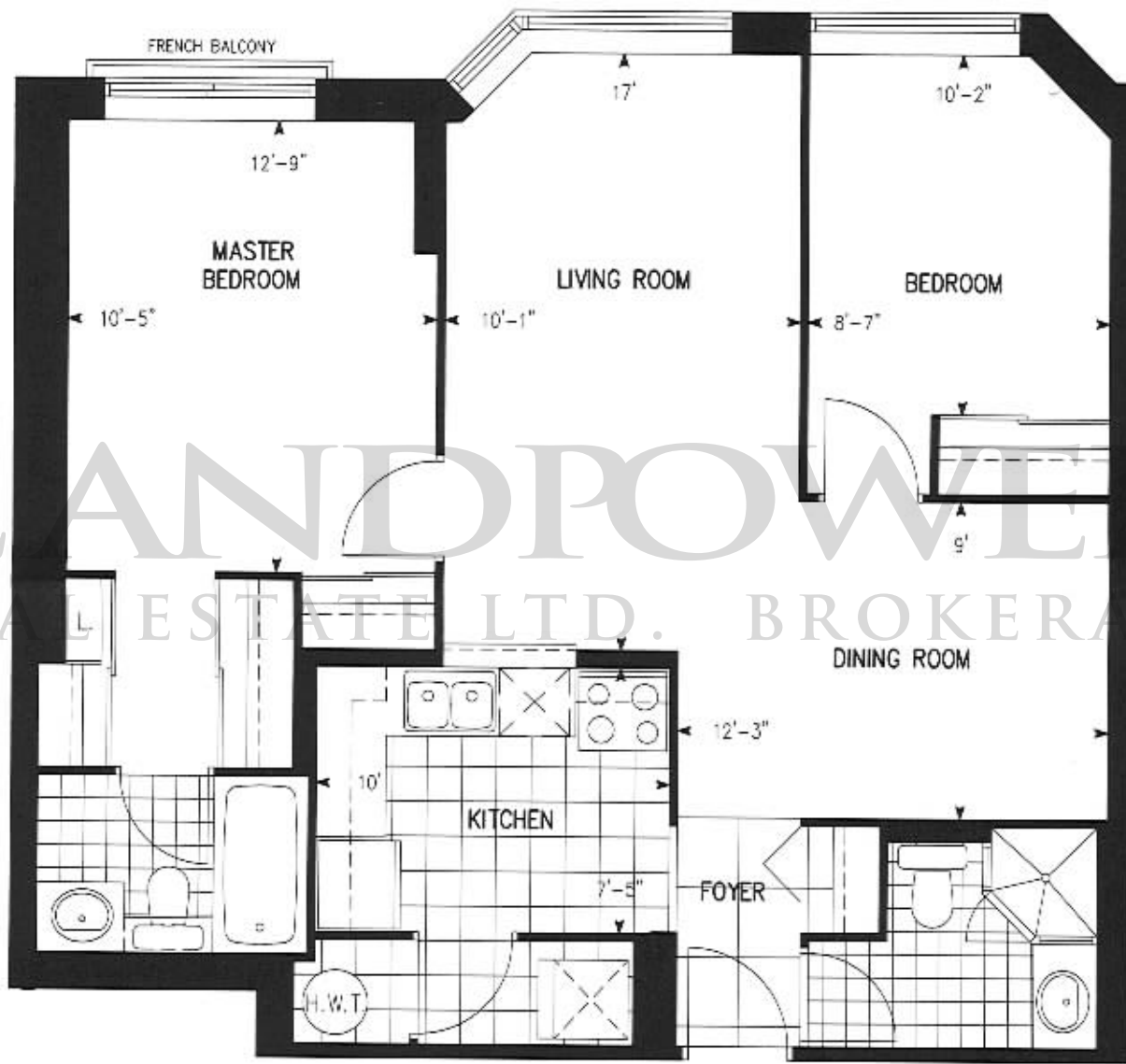
**TRIDEL**

Specifications subject to change without notice. E.&O.E.

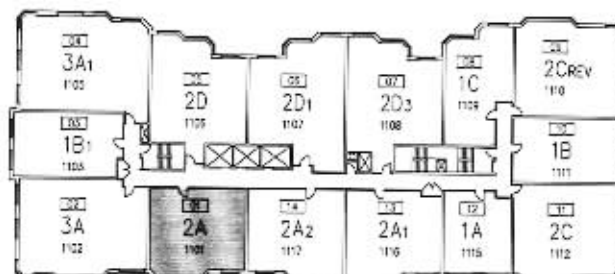


AT  
NORTHTOWN

# SUITE 2A



NORTHTOWN



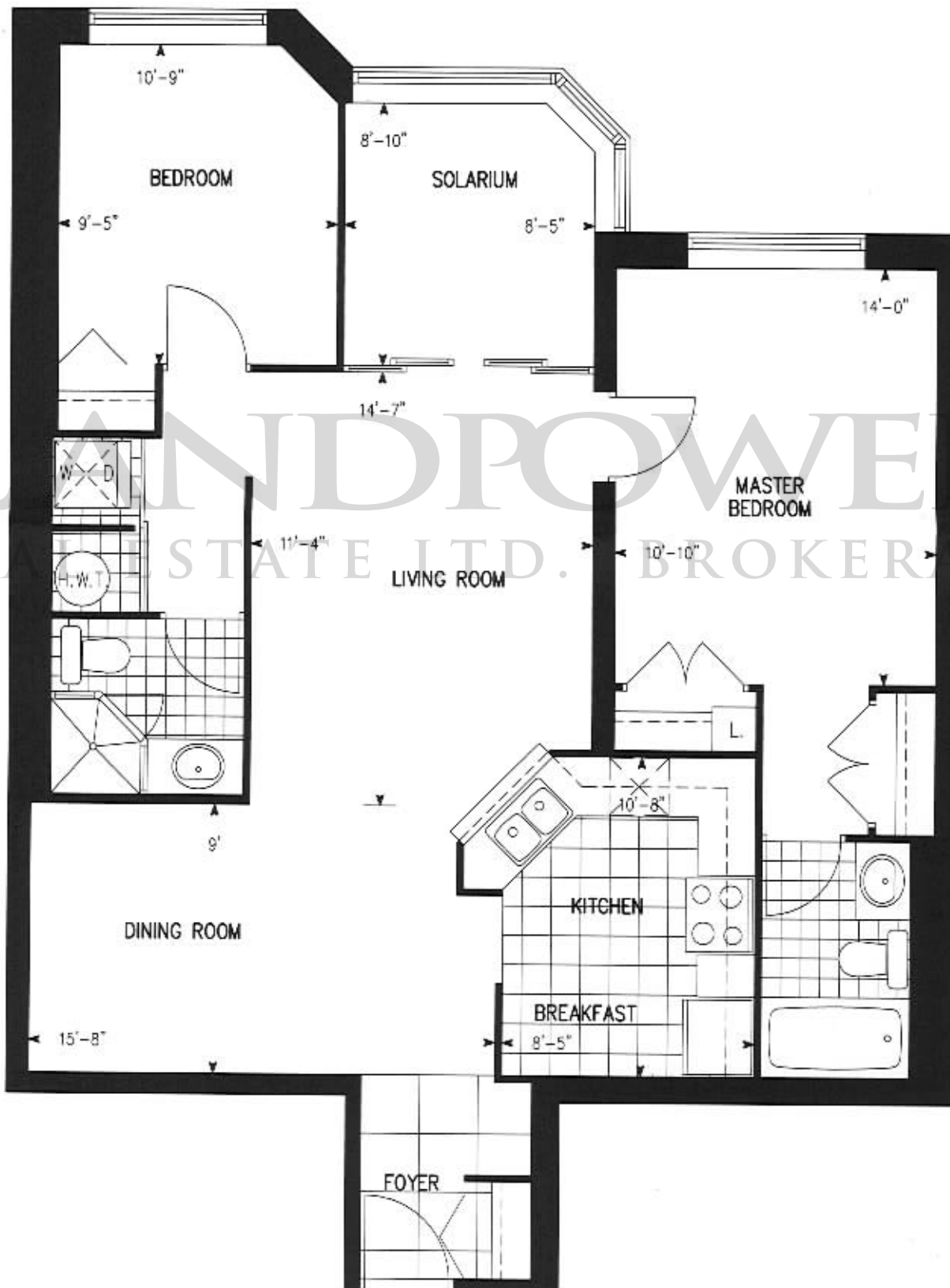
**TRIDEL**

Specifications subject to change without notice. E.&O.E.



AT  
NORTHTOWN

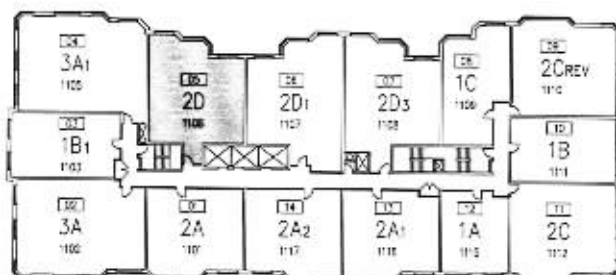
# SUITE 2D



LANDPOWER  
REAL ESTATE LTD. BROKERAGE



NORTHTOWN



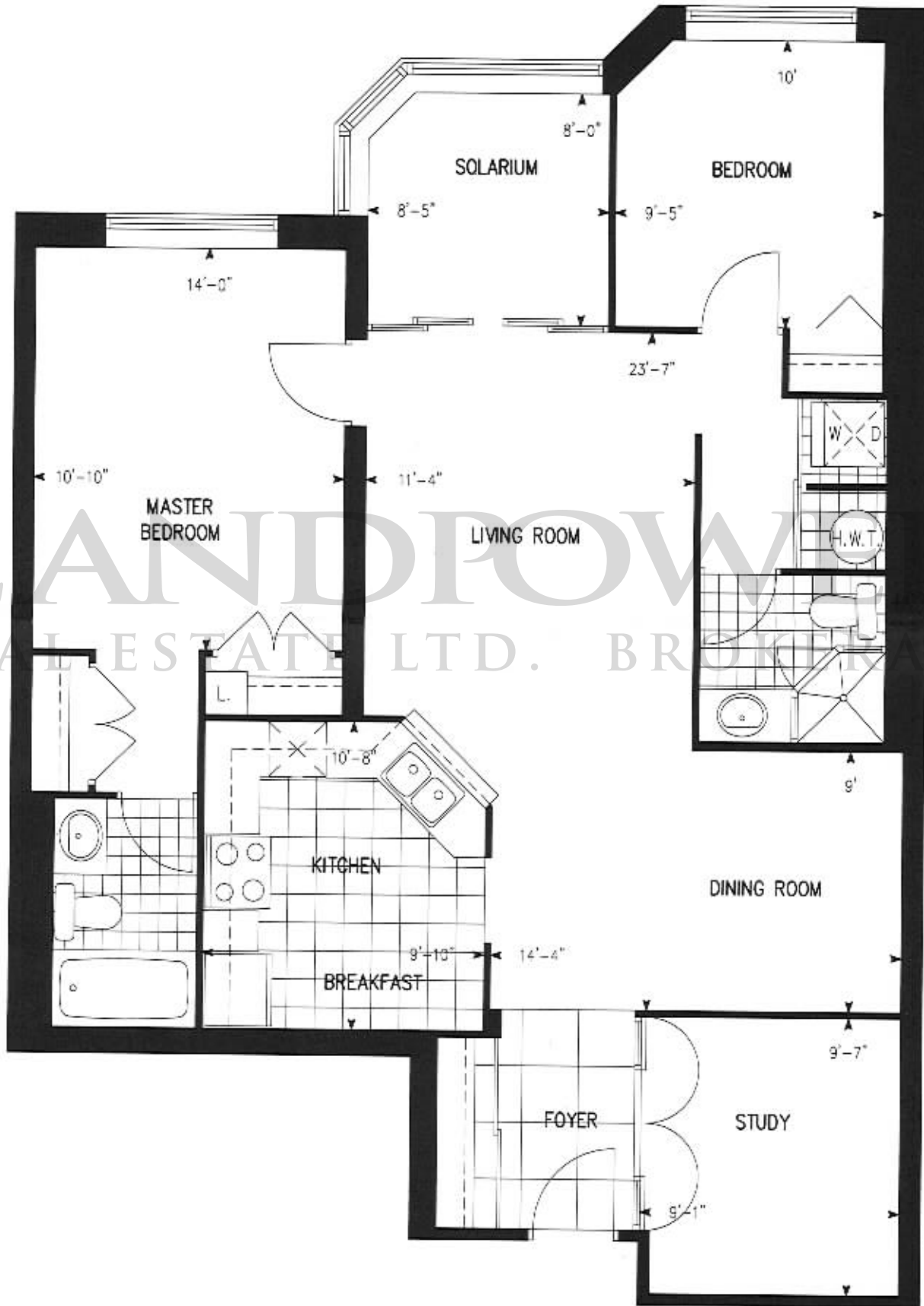
**TRIDEL**<sup>®</sup>

Specifications subject to change without notice. E.&O.E.



AT  
NORTHTOWN

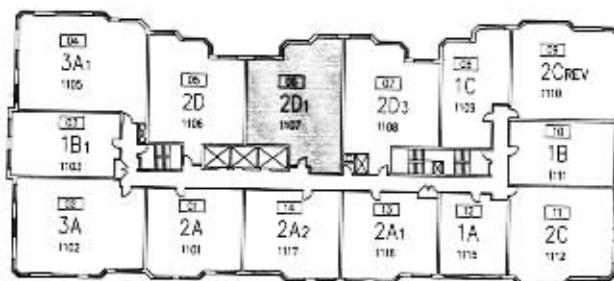
# SUITE 2D1



LANDPOWER  
REAL ESTATE LTD. BROKER/GE



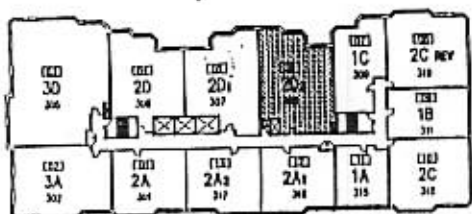
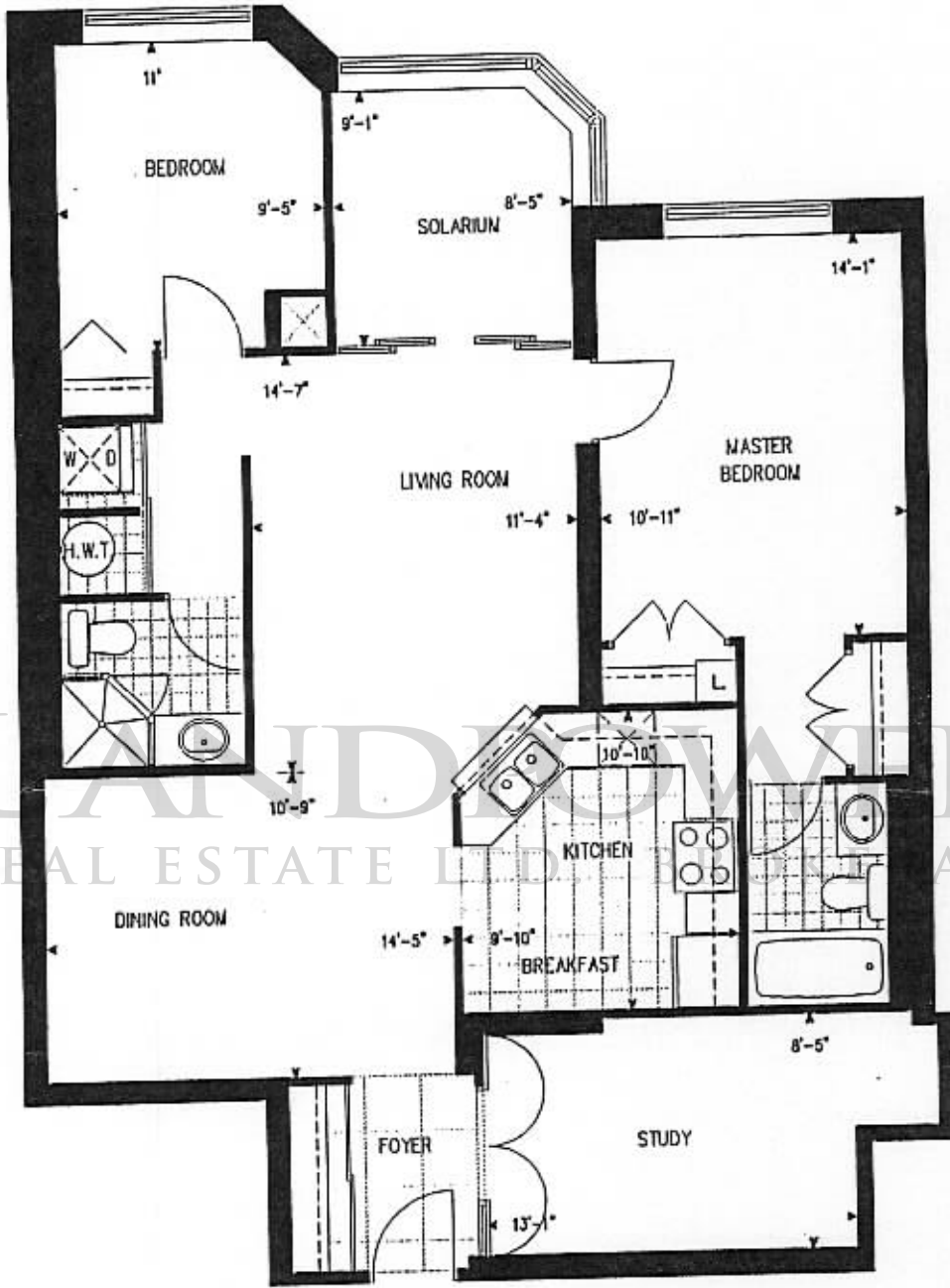
NORTHTOWN



**TRIDEL**<sup>®</sup>

Specifications subject to change without notice. E.&O.E.

# Royal Arms

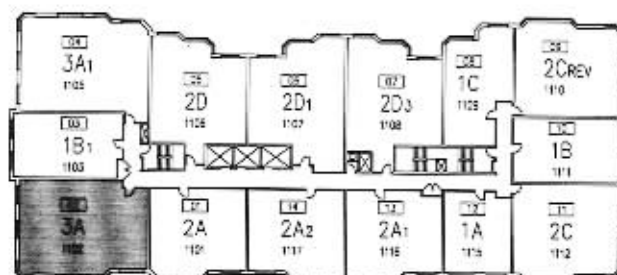


**TYPE 2D2**  
2 BEDROOM



AT  
NORTHTOWN

# SUITE 3A



NORTHTOWN

**TRIDEL**<sup>®</sup>

Specifications subject to change without notice. E.&O.E.

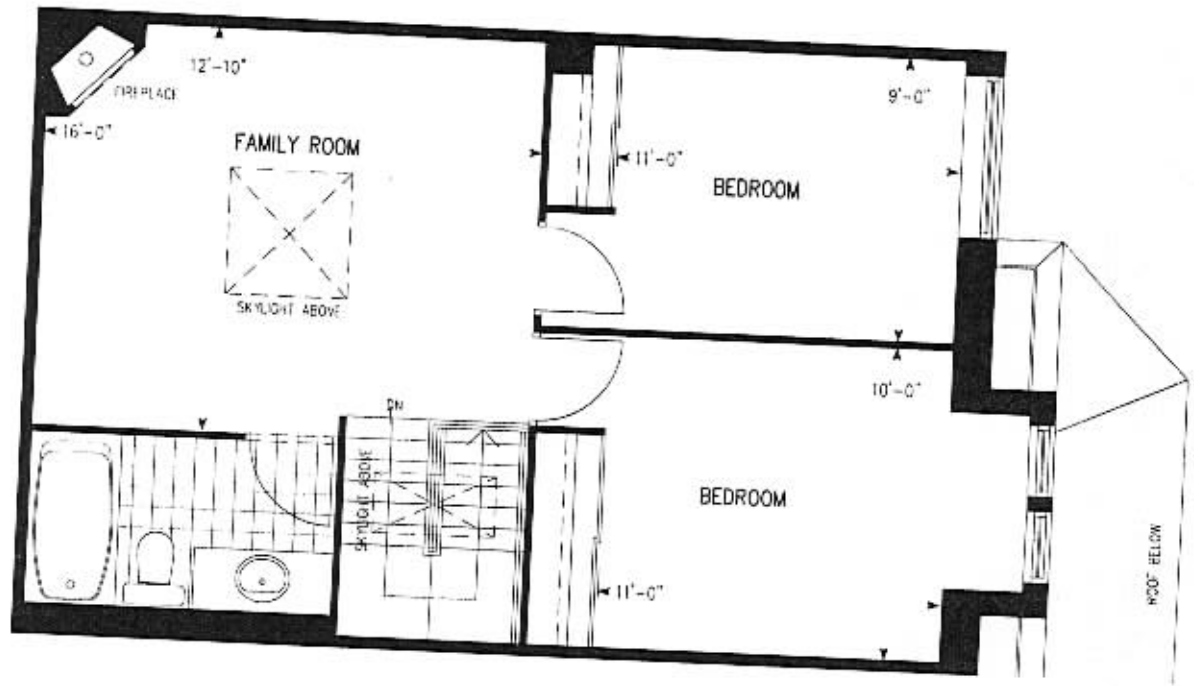




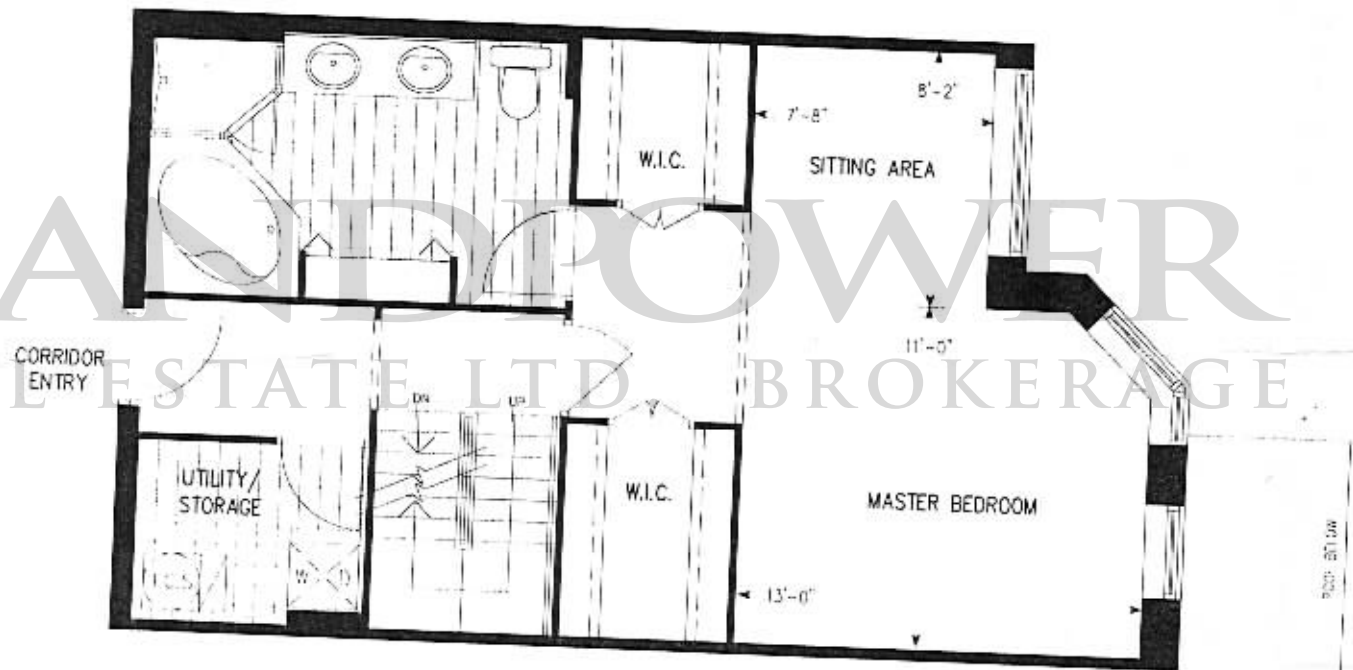
AT  
NORTHTOWN

# CASITA B

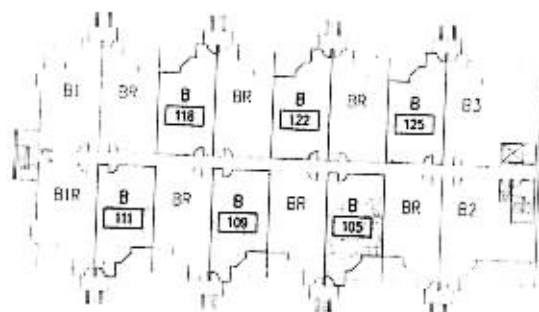
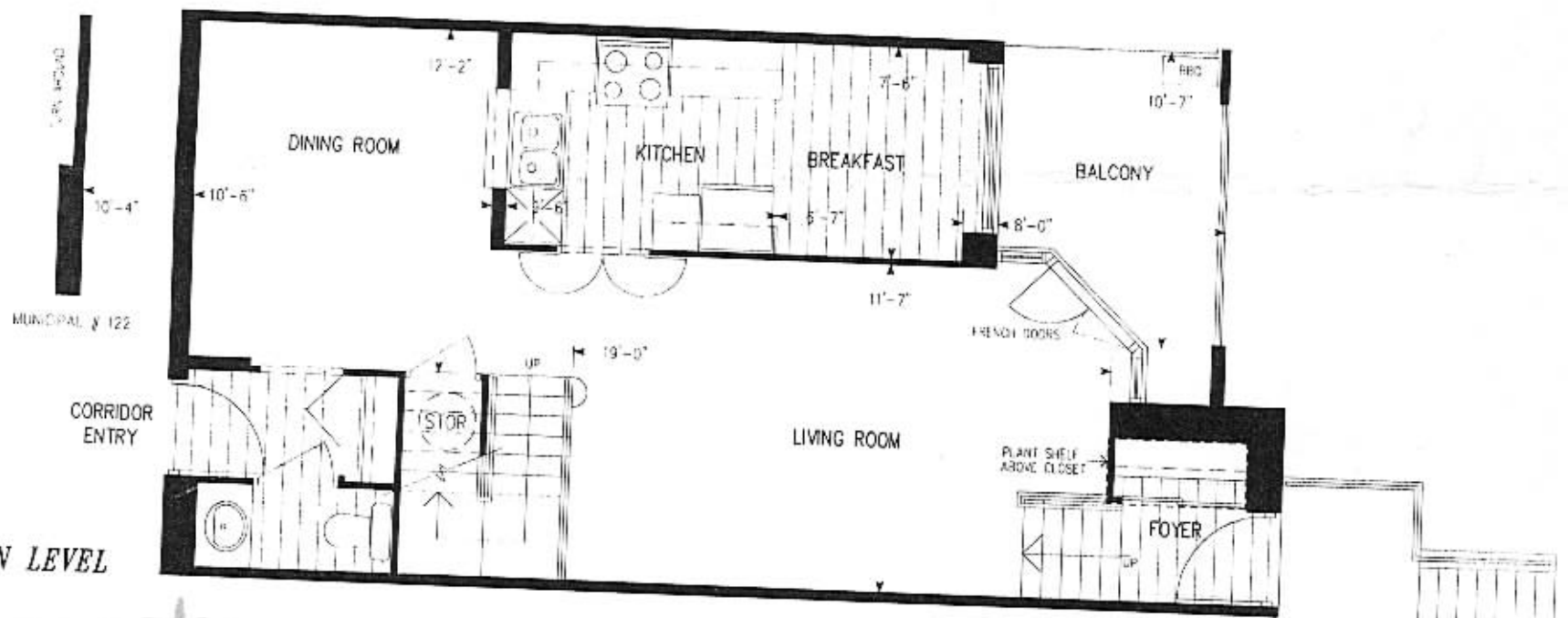
THIRD LEVEL



SECOND LEVEL



MAIN LEVEL



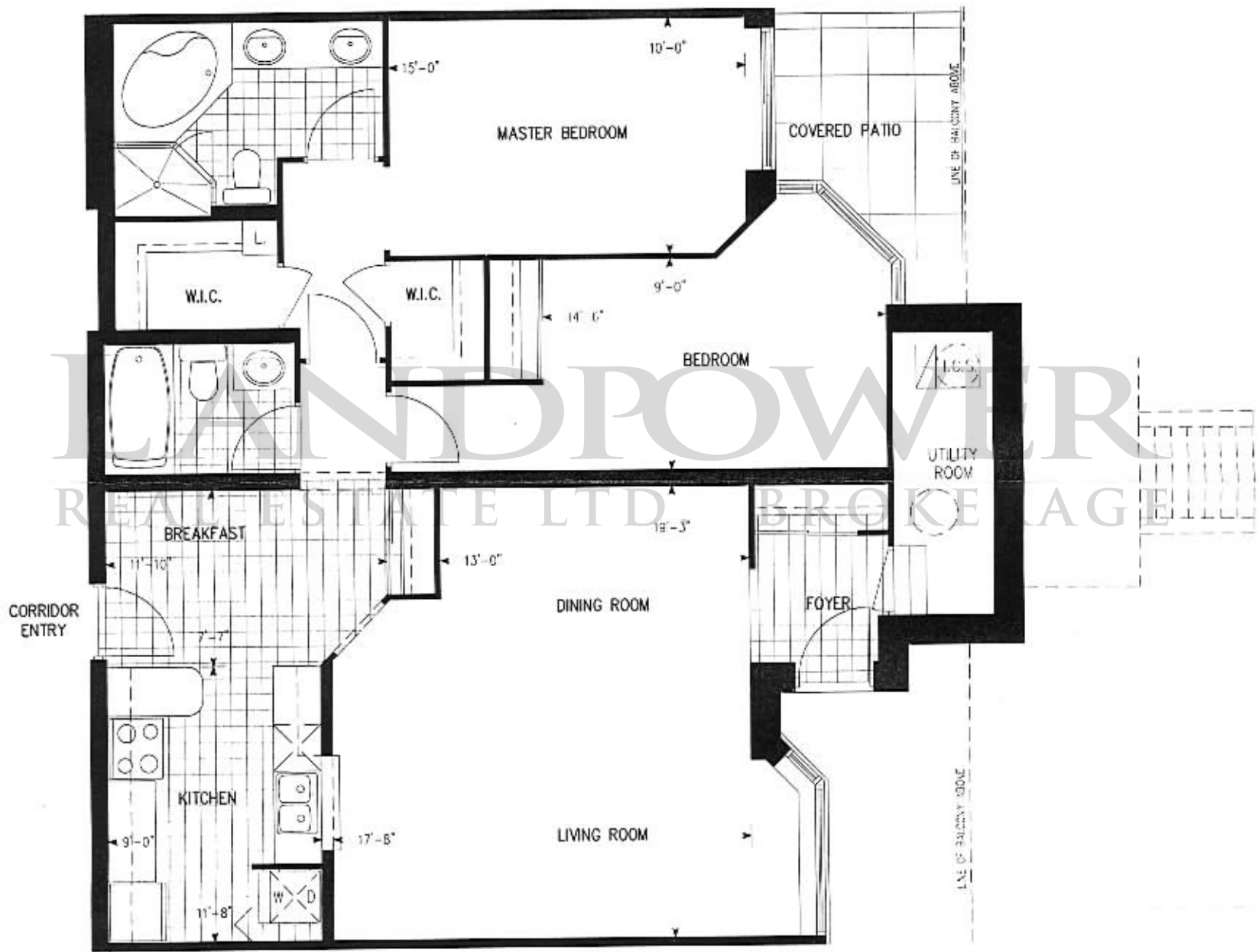
# TRIDEL®

Specifications subject to change without notice. E.&O.E.

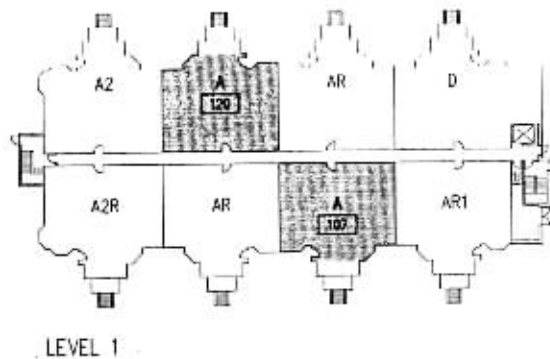


AT  
NORTHTOWN

# CASITA A



*BUNGALOW*



# TRIDEL®

Specifications subject to change without notice. E.&O.E.

LANDPOWER  
REAL ESTATE LTD. BROKERAGE

**TRIDEL<sup>®</sup>**

TEL: (416) 222-3811