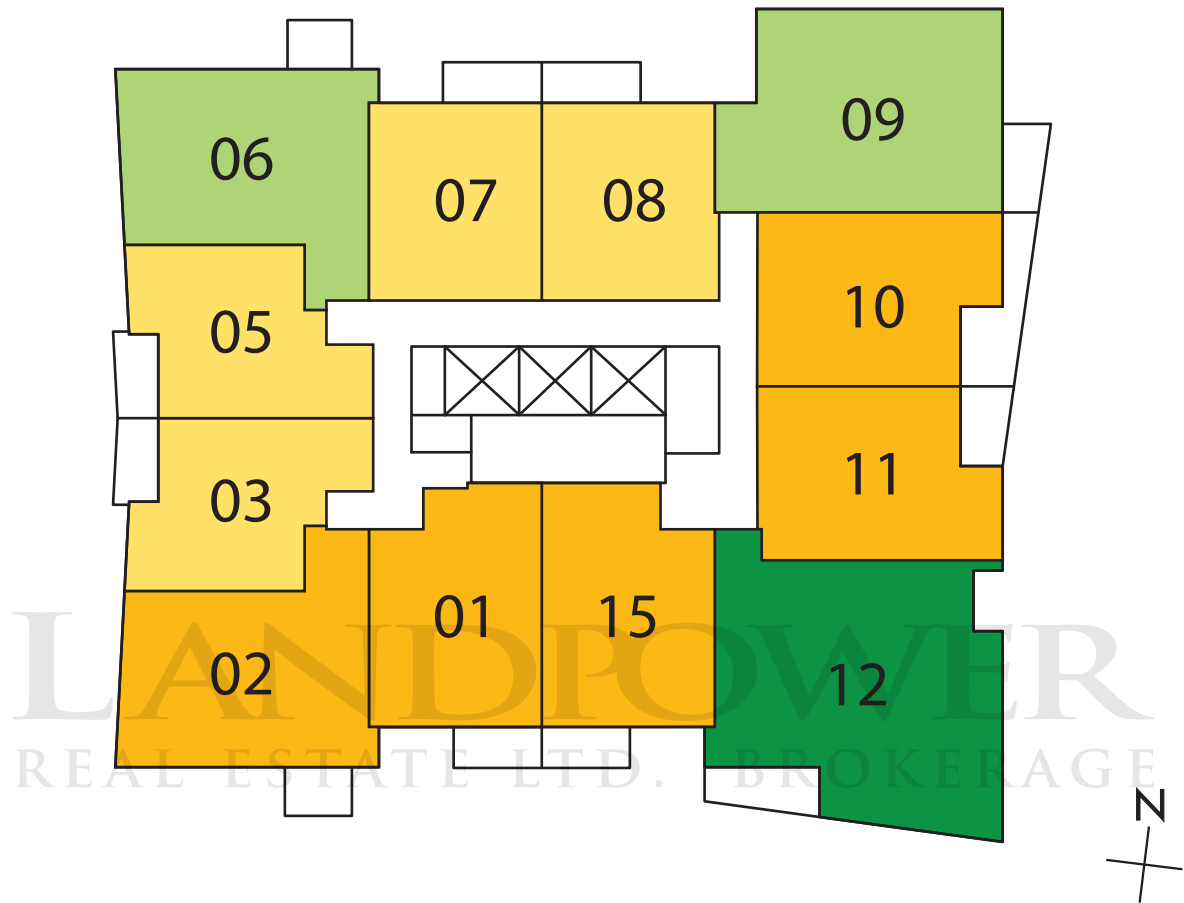








## Proposed Floorplans

# Typical plate plan



-  One Bedroom
-  One + Den / One + Flex
-  Two Bedroom / Two + Den
-  Three Bedroom

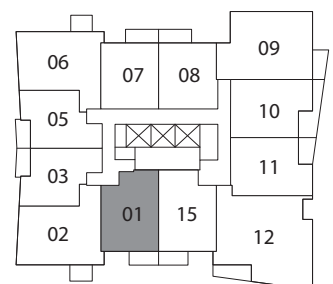
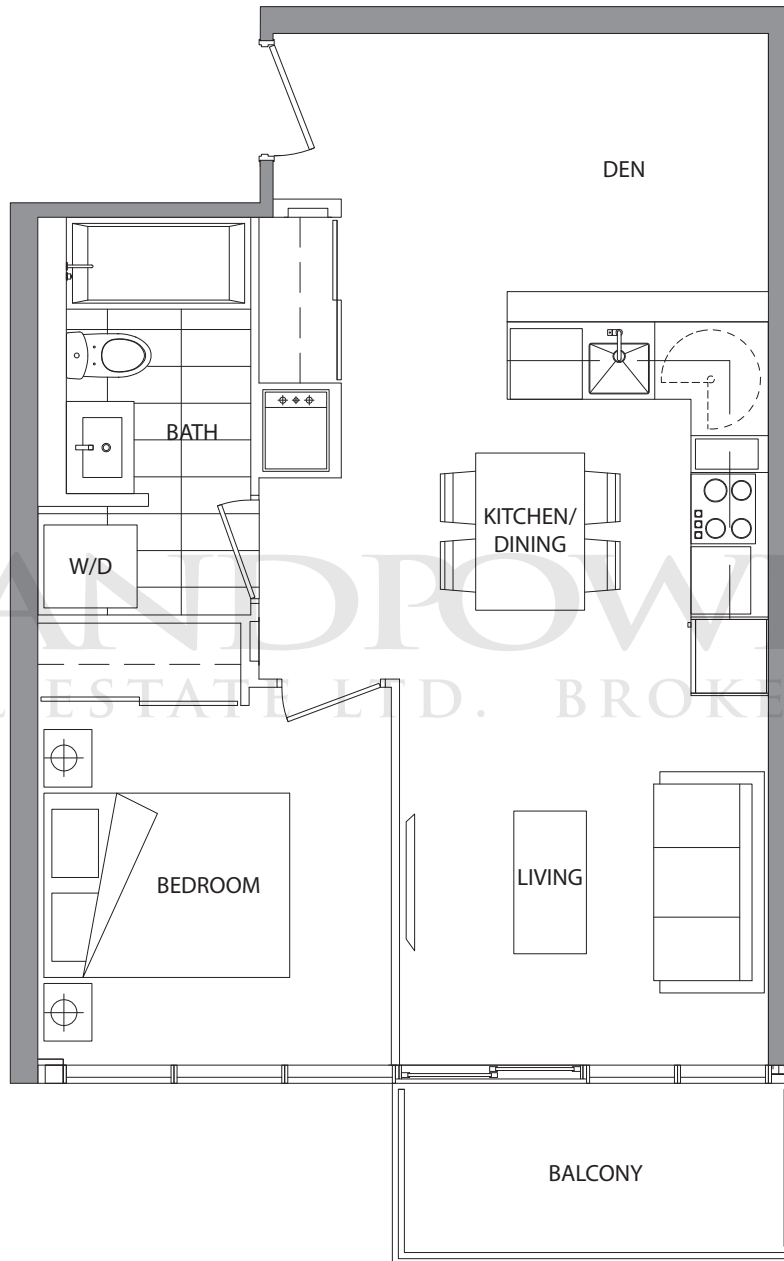
Suite 01

1 Bedroom + Den

Suite Area: 579 sq.ft.

Balcony Area: 47 sq.ft.

Total Area: 626 sq.ft.



The developer reserves the right to make minor revisions to interior wall locations and exterior window system. All materials and drawings are approximate. Information is subject to change without notice. Actual square footage may vary from the stated floorplan. E. & O. E.

3rd-35th floor

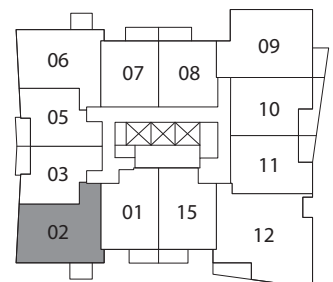
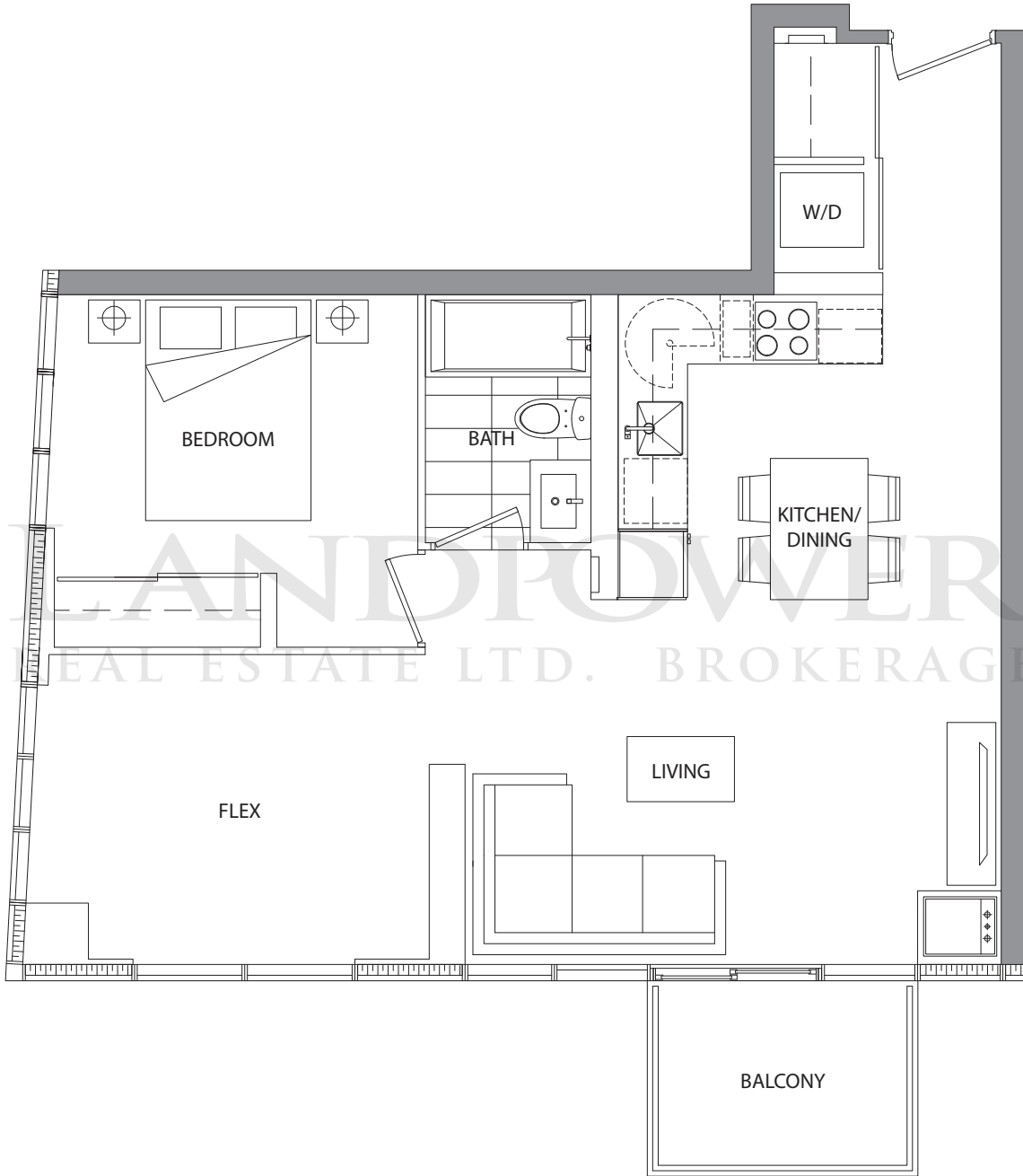
Suite 02

1 Bedroom + Flex

Suite Area: 708 sq.ft.

Balcony Area: 40 sq.ft.

Total Area: 748 sq.ft.



3rd-35th floor

The developer reserves the right to make minor revisions to interior wall locations and exterior window system. All materials and drawings are approximate. Information is subject to change without notice. Actual square footage may vary from the stated floorplan. E. & O. E.

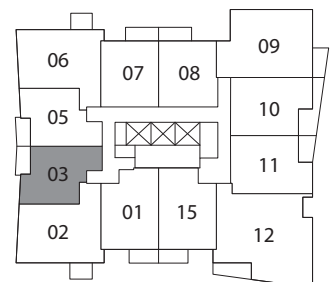
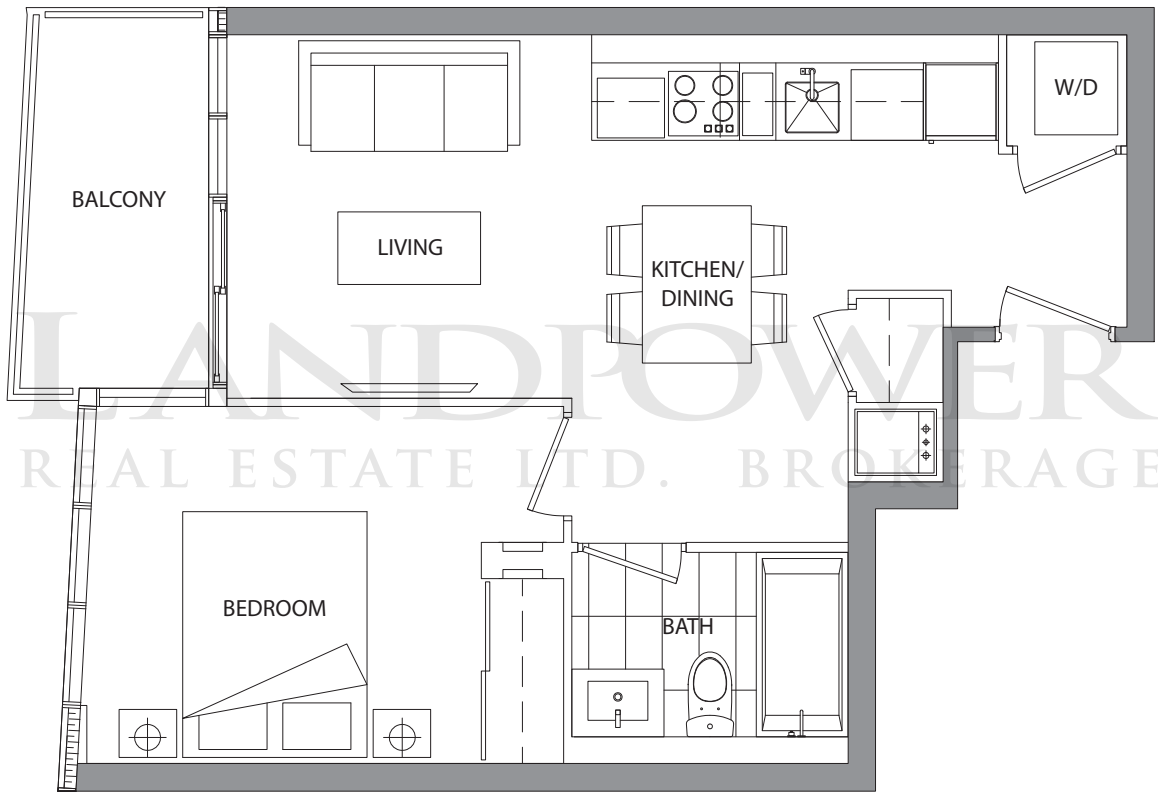
Suite 03

1 Bedroom

Suite Area: 500 sq.ft.

Balcony Area: 50 sq.ft.

Total Area: 550 sq.ft.



The developer reserves the right to make minor revisions to interior wall locations and exterior window system. All materials and drawings are approximate. Information is subject to change without notice. Actual square footage may vary from the stated floorplan. E. & O. E.

5th-33rd floor

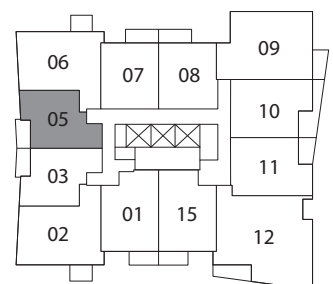
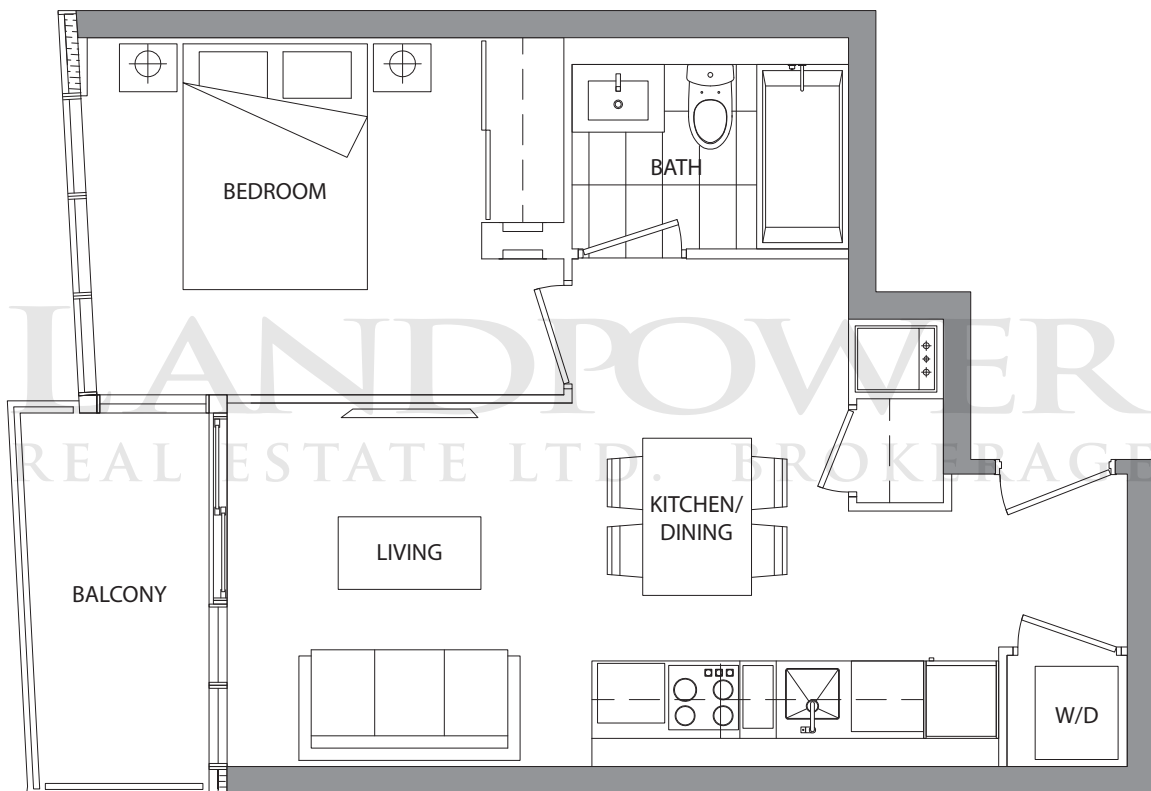
Suite 05

1 Bedroom

Suite Area: 500 sq.ft.

Balcony Area: 50 sq.ft.

Total Area: 550 sq.ft.



The developer reserves the right to make minor revisions to interior wall locations and exterior window system. All materials and drawings are approximate. Information is subject to change without notice. Actual square footage may vary from the stated floorplan. E. & O. E.

5th-33rd floor

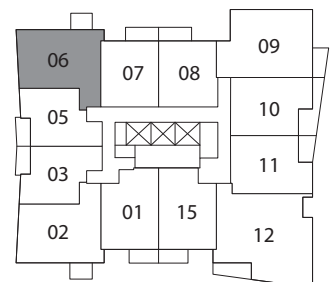
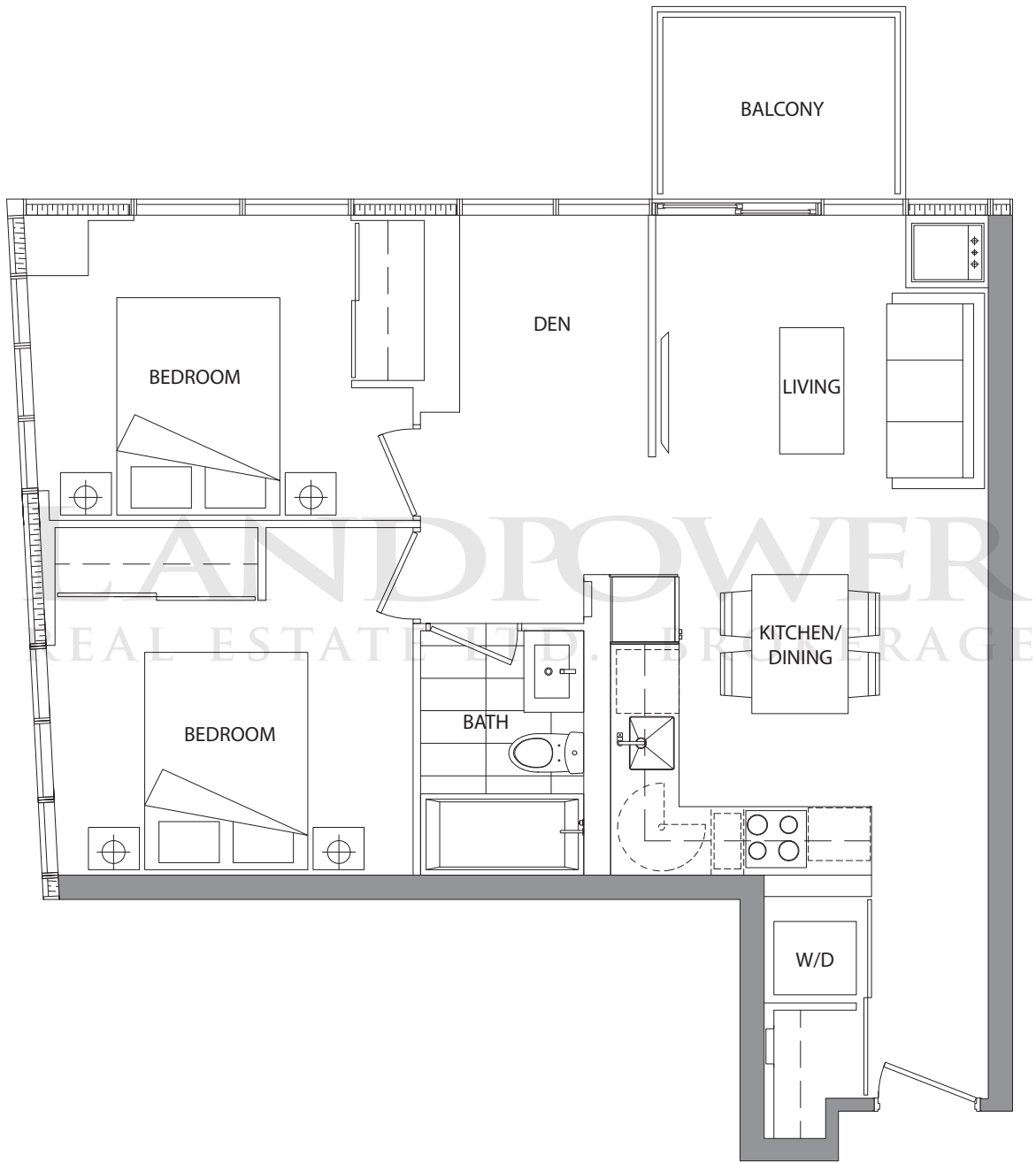
Suite 06

2 Bedroom + Den

Suite Area: 705 sq.ft.

Balcony Area: 40 sq.ft.

Total Area: 745 sq.ft.



The developer reserves the right to make minor revisions to interior wall locations and exterior window system. All materials and drawings are approximate. Information is subject to change without notice. Actual square footage may vary from the stated floorplan. E. & O. E.

3rd-33rd floor

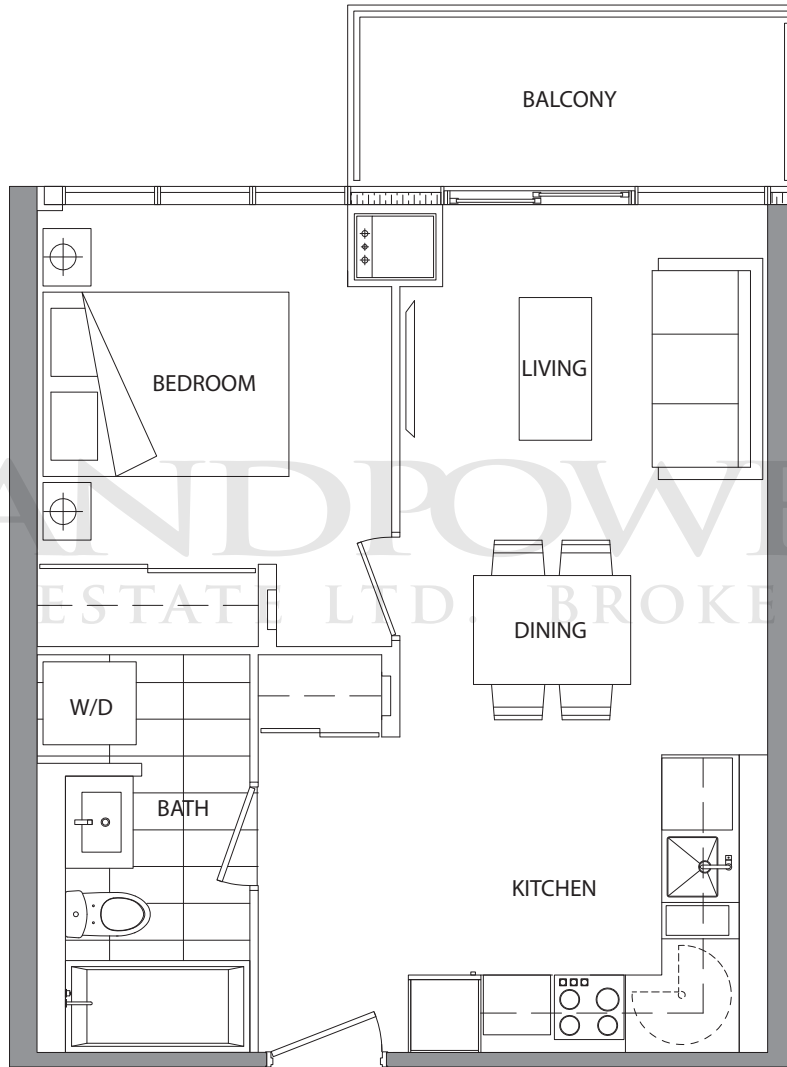
Suite 07

1 Bedroom

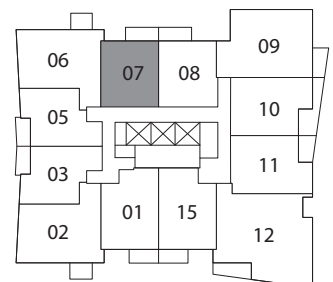
Suite Area: 505 sq.ft.

Balcony Area: 50 sq.ft.

Total Area: 555 sq.ft.



LANDPOWER  
REAL ESTATE LTD. BROKERAGE



2nd-35th floor

The developer reserves the right to make minor revisions to interior wall locations and exterior window system. All materials and drawings are approximate. Information is subject to change without notice. Actual square footage may vary from the stated floorplan. E. & O. E.



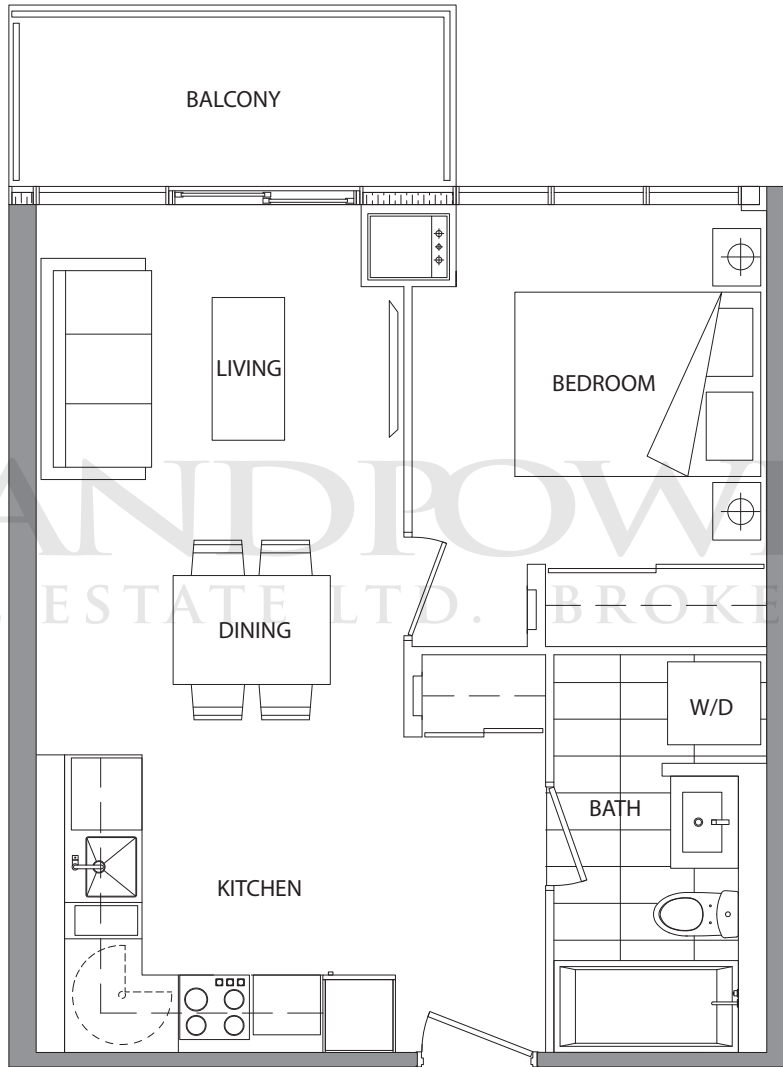
Suite 08

1 Bedroom

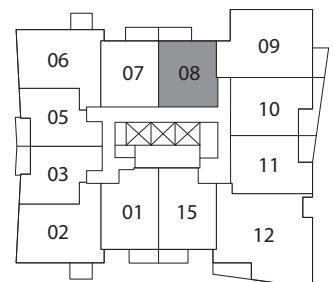
Suite Area: 505 sq.ft.

Balcony Area: 50 sq.ft.

Total Area: 555 sq.ft.



LANDPOWER  
REAL ESTATE LTD. BROKERAGE



2nd-35th floor

The developer reserves the right to make minor revisions to interior wall locations and exterior window system. All materials and drawings are approximate. Information is subject to change without notice. Actual square footage may vary from the stated floorplan. E. & O. E.

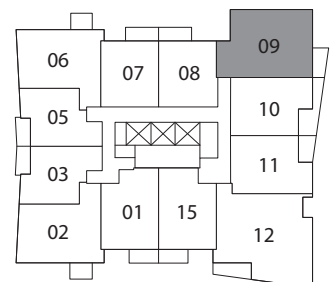
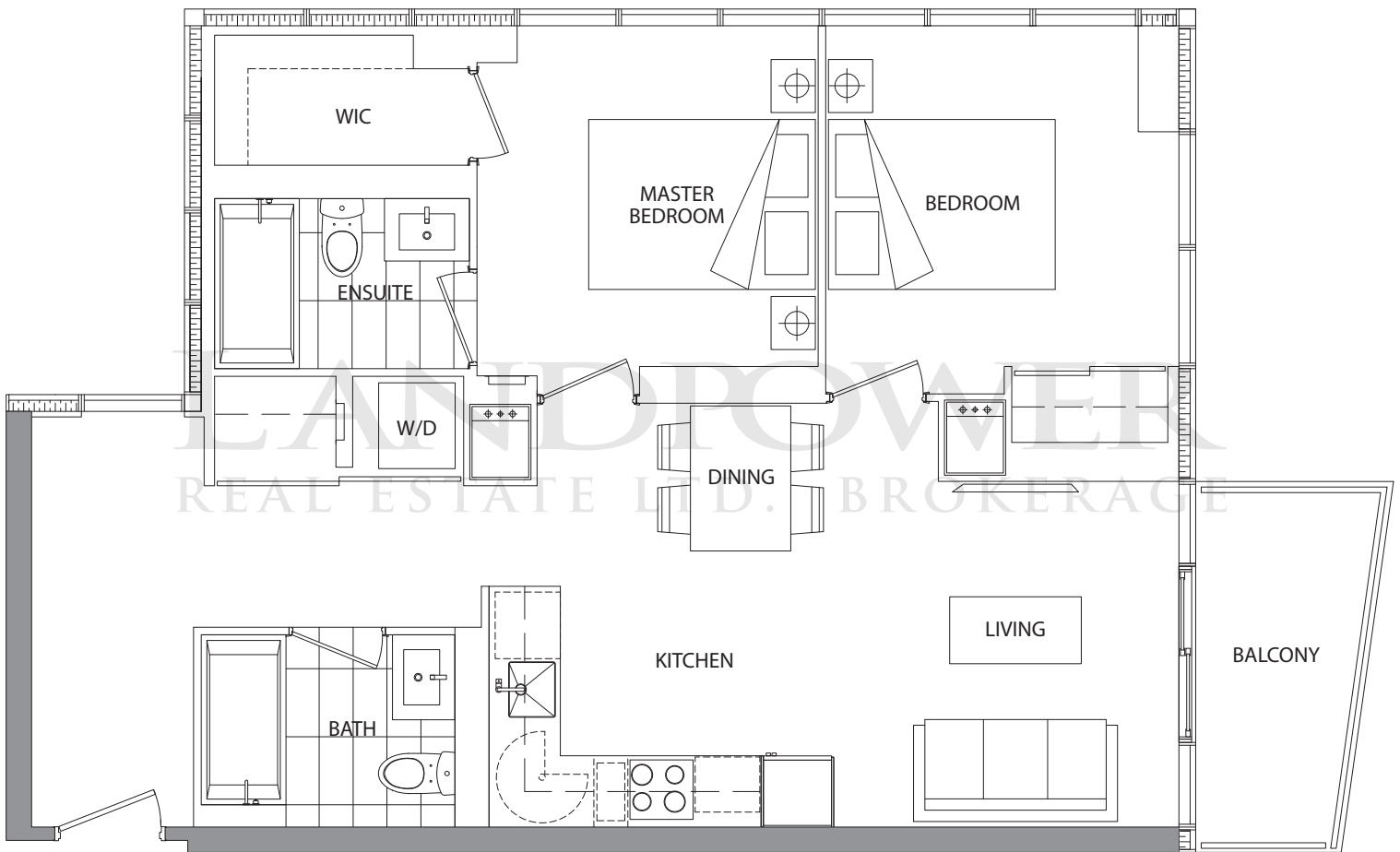
Suite 09

2 Bedroom

Suite Area: 802 sq.ft.

Balcony Area: 48 sq.ft.

Total Area: 850 sq.ft.



The developer reserves the right to make minor revisions to interior wall locations and exterior window system. All materials and drawings are approximate. Information is subject to change without notice. Actual square footage may vary from the stated floorplan. E. & O. E.

2nd-35th floor

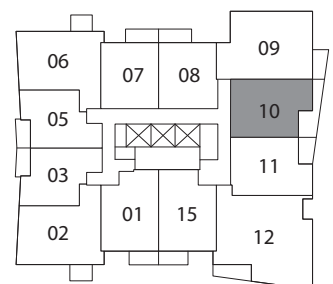
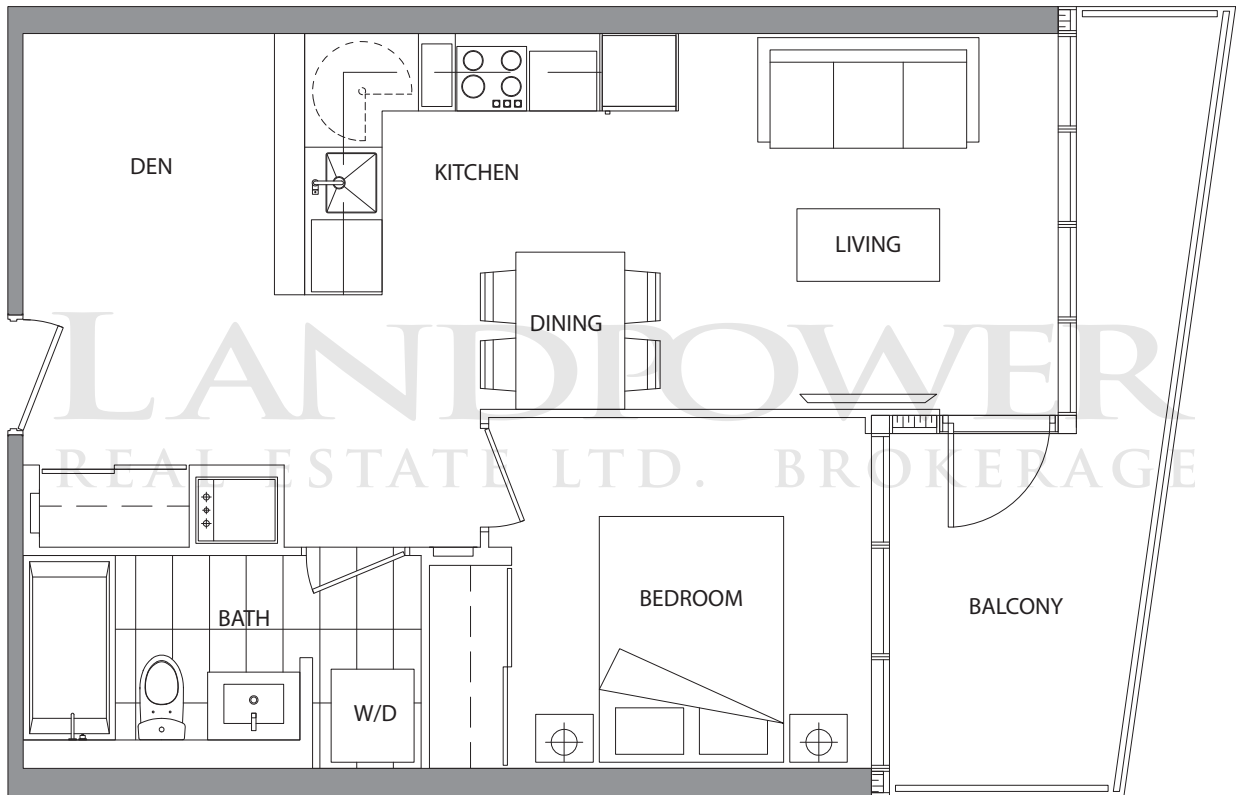
Suite 10

1 Bedroom + Den

Suite Area: 575sq.ft.

Balcony Area: 100 sq.ft.

Total Area: 675 sq.ft.



The developer reserves the right to make minor revisions to interior wall locations and exterior window system. All materials and drawings are approximate. Information is subject to change without notice. Actual square footage may vary from the stated floorplan. E. & O. E.

2nd-35th floor

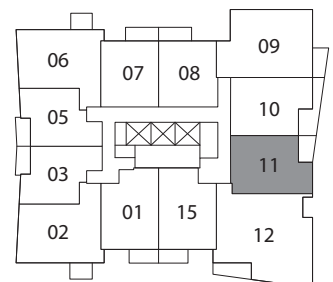
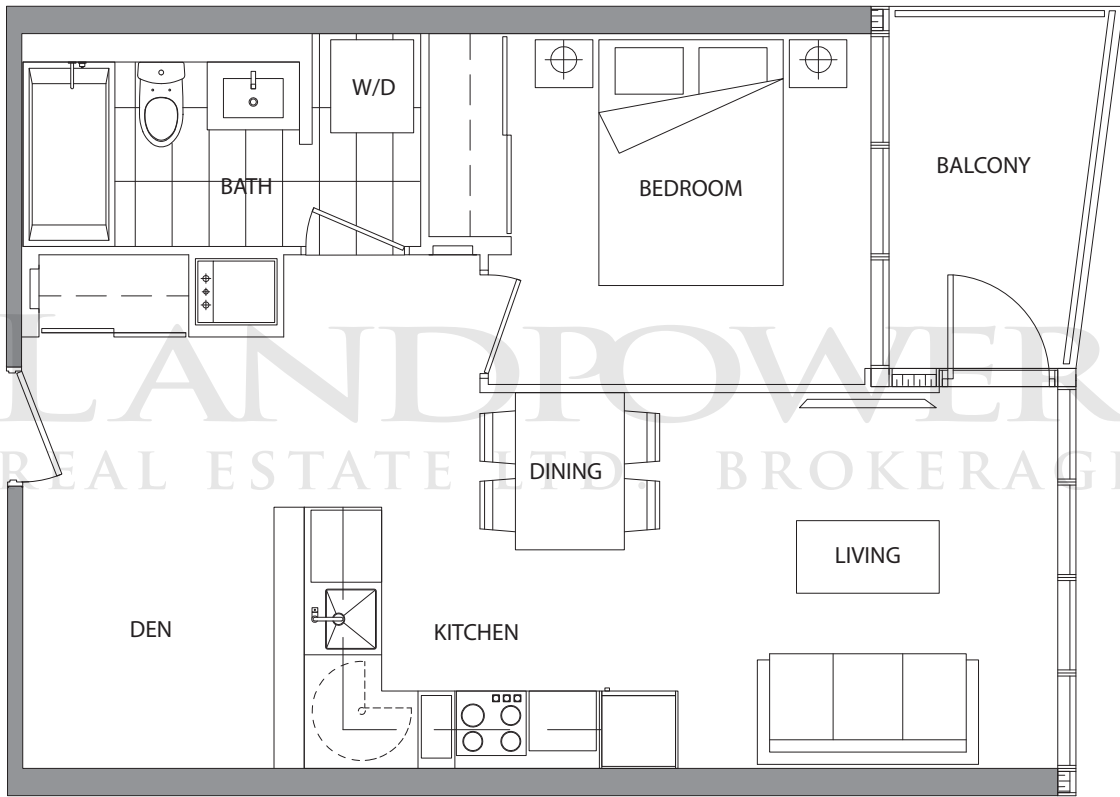
Suite 11

1 Bedroom + Den

Suite Area: 575 sq.ft.

Balcony Area: 51 sq.ft.

Total Area: 626 sq.ft.



The developer reserves the right to make minor revisions to interior wall locations and exterior window system. All materials and drawings are approximate. Information is subject to change without notice. Actual square footage may vary from the stated floorplan. E. & O. E.

2nd-35th floor

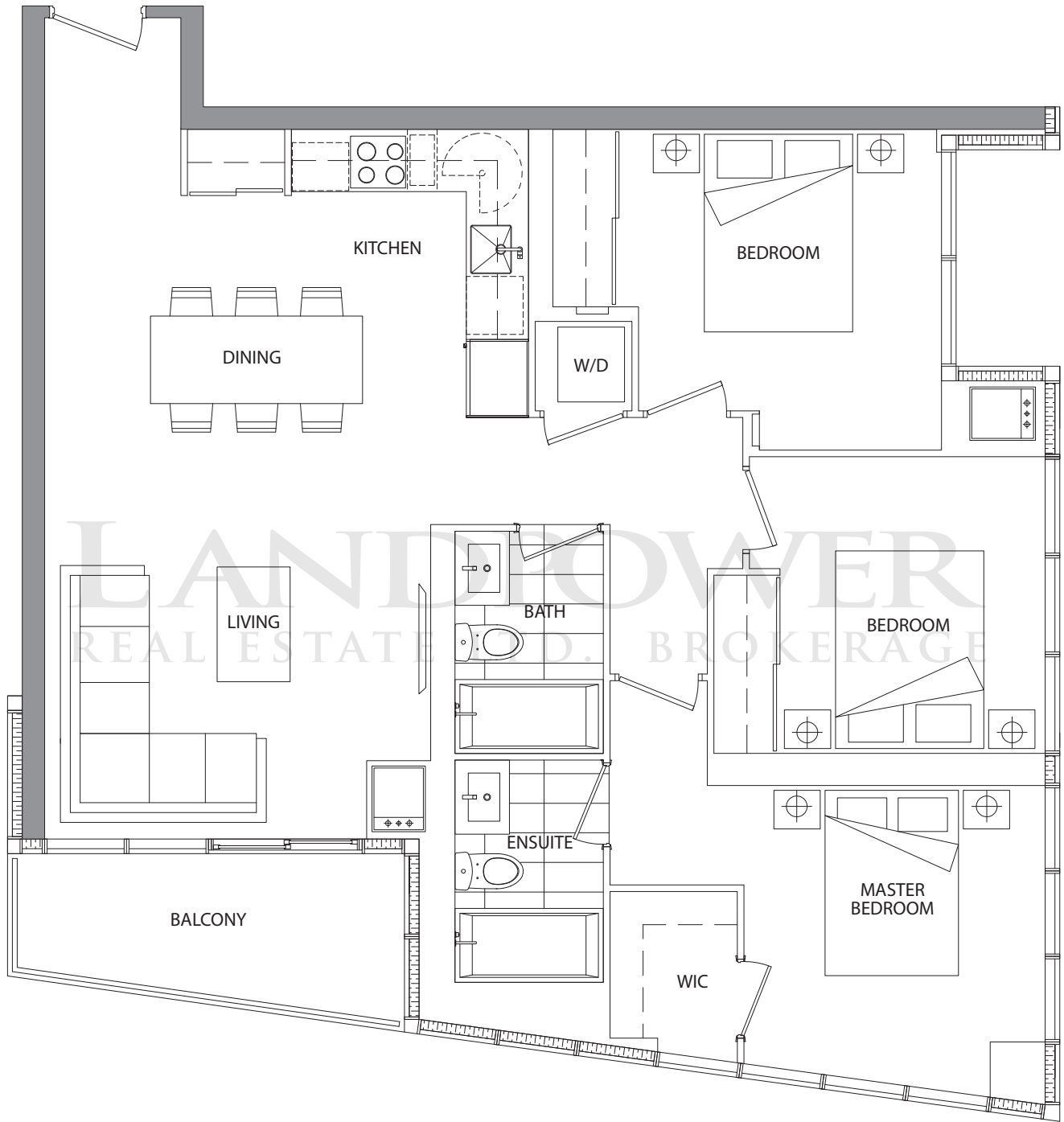
Suite 12

3 Bedroom

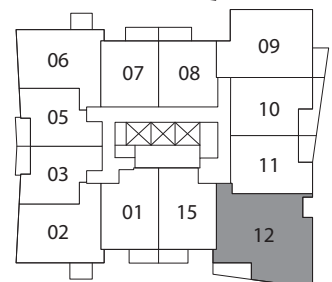
Suite Area: 1038 sq.ft.

Balcony Area: 65 sq.ft.

Total Area: 1103 sq.ft.



LANDFLOWER  
REAL ESTATE LTD. BROKERAGE



The developer reserves the right to make minor revisions to interior wall locations and exterior window system. All materials and drawings are approximate. Information is subject to change without notice. Actual square footage may vary from the stated floorplan. E. & O. E.

3rd-35th floor

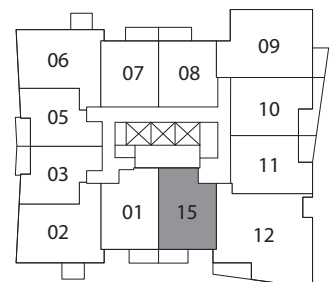
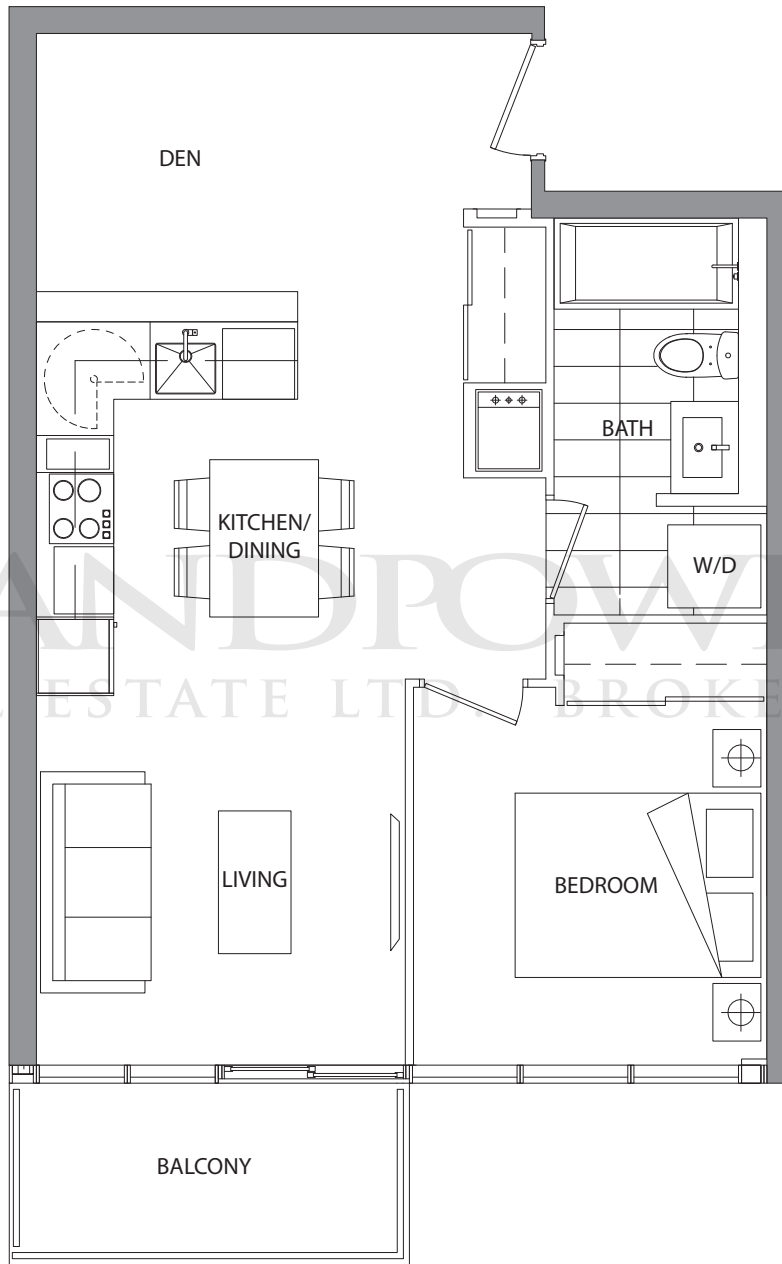
Suite 15

1 Bedroom + Den

Suite Area: 579 sq.ft.

Balcony Area: 47 sq.ft.

Total Area: 626 sq.ft.



3rd-35th floor

The developer reserves the right to make minor revisions to interior wall locations and exterior window system. All materials and drawings are approximate. Information is subject to change without notice. Actual square footage may vary from the stated floorplan. E. & O. E.



**EXCLUSIVE VIP BROKER SALES EVENT - F. A. Q.  
FEBRUARY 10<sup>TH</sup>, 2014**

**Allocation of Suites:** Builder allocated. VIP agents are required to submit a completed Suite Allocation Request Form directly to 416.813.0600 or email [Forward@concordadex.com](mailto:Forward@concordadex.com).

Deadline for submission is **Monday February 3<sup>rd</sup> at 12:00 pm (noon)**. Vendor will determine the successful unit choice and allocations.

You will be contacted by our Sales Representative with your suite allocation. If your requested choices are not available, we will make efforts to suggest alternate suites for your clients to consider.

**Power of Attorney:** Agents are allowed to purchase on behalf of clients via Power of Attorney (P.O.A.). Must use specified valid P.O.A. form and must present photocopy of valid Purchaser I.D. P.O.A. must provide valid I.D. as well.

**Deposit Schedule:** 5% upon signing of Agreement of Purchase and Sale ("APS");  
5% 120 days after Date of Agreement, via post-dated cheque;  
5% 210 days after Date of Agreement, via post-dated cheque;  
5% 300 days after Date of Agreement, via post-dated cheque;  
5% on Interim Closing.

All deposit cheques are made payable to **Aird & Berlis LLP in Trust**.

**Proof of Identity:** Every named purchaser(s) on the agreement must have a valid photo I.D. and S.I.N. number (if applicable). If the purchasing is done via P.O.A., a photocopy of these two pieces of information must be presented.

**Purchaser:** The named purchaser(s) must include one natural person. If a corporation needs to be added, or if the purchaser wishes to hold the investment under a holding company, names must be entered as one natural person and the corporation or holding company (joint names); directing title to the corporation or holding company can be done upon final closing. Purchaser's occupation must also be supplied.

**Assignment\*:** The named purchaser(s) will be allowed to assign the suite starting from the Interim Occupancy Date up to 3 weeks before Final Closing of the unit, however, the purchaser is not allowed to advertise the suite for sale on MLS or any other public medium.

No change of Brokerage within the 10-day cooling period. No advertising of this exclusive VIP release is allowed.

|p| 416.813.0333 |f| 416.813.0600 |e| info@concordadex.com |i| www.concordadex.com

**Presentation Centre Hours of Operation:  
Monday to Friday 10:00 am – 6:00 pm  
Saturday to Sunday 11:00 am – 6:00 pm**

\* Valid on sales made on February 10<sup>th</sup>, 2014. Net of HST.



condominiums

### **Creative Studios**

Photographic Studio

Dance/Yoga Studio

Music Studio

Arts & Crafts/DIY Studio

Kids Interactive Learning Playroom

### **Prizma Club Amenities**

Private Party Room with Interactive Media Lounge

Weight Room and Fitness Studio

Yoga Studio

Hot Tub

Swimming Pool & Poolside Lounge

Men's & Women's Change Rooms

Gymnasium

Outdoor Tai Chi Deck

Spinning Room

Massage Lounge

Theatre

Pet Spa

Billiards & Games Room

Guest Suites

|p| 416.813.0333 |f| 416.813.0600 |e| info@concordadex.com |i| www.concordadex.com

Presentation Centre Hours of Operation:

Monday to Friday 10:00 am – 6:00 pm

Saturday to Sunday 11:00 am – 6:00 pm

**CONCORD**  
CITYPLACE





concord  
adex  
condominiums

**BUILDING FEATURES**

- » Tower with 24-Hour Concierge
- » Photographic Studio
- » Dance/Yoga Studio
- » Arts & Crafts/ DIY Studio
- » Music Studio
- » Kids Interactive Learning Playroom
- » Beautiful Landscaped Terrace with Patio Seating & Barbeque Area
- » 2 Guest Suites
- » Energy Recovery Ventilator for Air Quality & Reduction of Energy Waste
- » High Efficiency Gas Boilers and Chillers

**SUITE FEATURES**

- » Laminate Wood Flooring Throughout
- » Kitchen Designer Selected Custom Cabinetry with Under-Cabinet Lighting and Soft-Close Hardware
- » Quartz Countertop in Kitchen
- » Carrara Marble Backsplash
- » Stainless-Steel Undermount Sink with Premium Polished Chrome Faucet
- » Premium Integrated Refrigerator, Stainless Steel Electric Cook-Top, Stainless Steel Integrated Oven, Stainless Steel Hood Fan, Stainless Steel Microwave Oven with Trim, Integrated Dishwasher
- » Quartz Countertop with Undermount Sink in Bathroom
- » Bathroom Designer Selected Custom Cabinetry with Internal Drawers, Custom Medicine Cabinet with Mirror, Shelves and Built-In Lighting
- » Carrara Marble Wall Tiles in Bathroom
- » Honed Carrara Marble Floor Tiles in Bathroom
- » Premium Polished Chrome Faucet, Tub Spout, Shower Head, and Dual Flush Toilet in Bathroom
- » High-Capacity Front-Load Washer and Dryer Units (Stacked)
- » Roller-Shade Window Coverings

Unit	Type	Sq. Ft.	Exposure	Available Floors	Starting Prices
01	1B+D/1B	579	South	3-35	295,800
02	1B+F/1B	708	South West	3-35	353,900
03	1B/1B	500	West	3-35	264,800
05	1B/1B	500	West	3-33	266,800
06	2B+D/1B	705	North West	3-33	358,200
07	1B/1B	505	North	3-35	270,800
08	1B/1B	505	North	3-35	269,800
09	2B/2B	802	North East	3-35	409,300
10	1B+D/1B	575	East	3-35	309,800
11	1B+D/1B	575	East	3-35	307,800
12	3B/2B	1038	South East	3-35	509,800
15	1B+D/1B	579	South	3-35	297,800

**Deposit Structure**

5% on Signing  
5% in 120-Days  
5% in 210-Days  
~~5% in 300-Days~~  
5% on Occupancy

HST Included\*

**Occupancy**

Occupancy Spring 2017

**Parking/Locker**

Parking at \$38,000\*\*  
(\*\*Not Available for 1B Units)  
Locker at \$5,000

**Maintenance Fees**

Approximately \$0.51/Sq.Ft  
(Hydro Separately Metered)

**Estimated Taxes**

Approximately 1% of Purchase Price

|phone| 416.813.0333 |fax| 416.813.0600 |email| info@concordadex.com

www.concordadex.com

\*CERTAIN TERMS AND CONDITIONS WILL APPLY. SUBJECT TO CHANGE & AVAILABILITY WITHOUT PRIOR NOTICE. E. & O.E. Price List as of January 16, 2014.



**PLEASE PRINT CLEARLY**

**BROKERAGE NAME:** \_\_\_\_\_ **PHONE:** \_\_\_\_\_

**BROKERAGE ADDRESS:** \_\_\_\_\_

**AGENT NAME:** \_\_\_\_\_ **CELL PHONE NUMBER:** \_\_\_\_\_

**AGENT EMAIL:** \_\_\_\_\_ **AGENT FAX NUMBER:** \_\_\_\_\_

Please print your contact email clearly as you will be contacted via email for your unit requests. Purchaser must bring original government issued picture ID with them at time of purchase. All deposit cheques must be presented at time of signing (payable to **Aird & Berlis in Trust**).

**Purchaser #1:**

\_\_\_\_\_  
Legal Name in Full

\_\_\_\_\_  
Address in Full Home # Cell # Bus#

\_\_\_\_\_  
Email Address Occupation

**Purchaser #2:**

\_\_\_\_\_  
Legal Name in Full

\_\_\_\_\_  
Address in Full Home # Cell # Bus#

\_\_\_\_\_  
Email Address Occupation

	Choice	Unit Number	Floor	Suite Type (Bach/1B/1B+D /1B+S/2B/2B+D)	Parking/ Locker Required?		Choice	Unit Number	Floor	Suite Type (Bach/1B/1B+D /1B+S/2B/2B+D)	Parking/ Locker Required?
<b>Purchaser #1</b>	1					<b>Purchaser #2</b>	1				
	2						2				
	3						3				

**Your completed Suite Allocation Request Form must be faxed or emailed to 416.813.0600 or Foward@concordadex.com by: Monday February 3<sup>rd</sup>, 2014 – 12:00 PM (NOON).**

Notification of allocated suites will be provided after 12:00 PM on Tuesday February 4<sup>th</sup>, 2014.  
Vendor to determine the successful unit choice and allocations.

