

© CITYPLACE

LANDPOWER

REAL ESTATE LTD. BROKERAGE

OPPEX

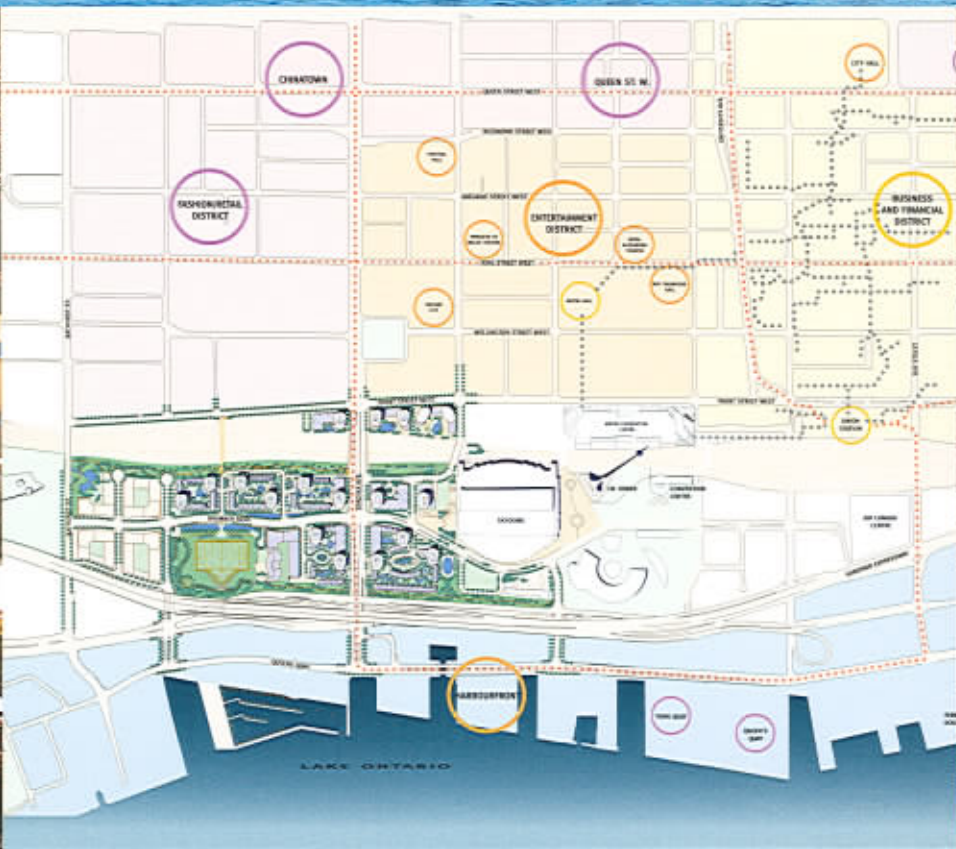


LANDPOWER
REAL ESTATE LTD BROKER/AG

apex



CITYPLACE



Club Vista East - 2nd Floor



**Club Vista East
2nd Floor**

1. Landscape water garden
2. Fitness facility
3. Recreation lounge
4. Hollywood style screening room
5. Kitchen
6. Billiards room
7. Outdoor terrace
8. Bridge to Club Vista West
9. Porte cochere

13. Steam room
14. Men's change room
15. Steam room
16. Spa - massage rooms
17. Whirlpool
18. 80 foot indoor pool
19. Bridge to Club Vista East

**Club Vista West
Ground Floor**

**Club Vista West
2nd Floor**

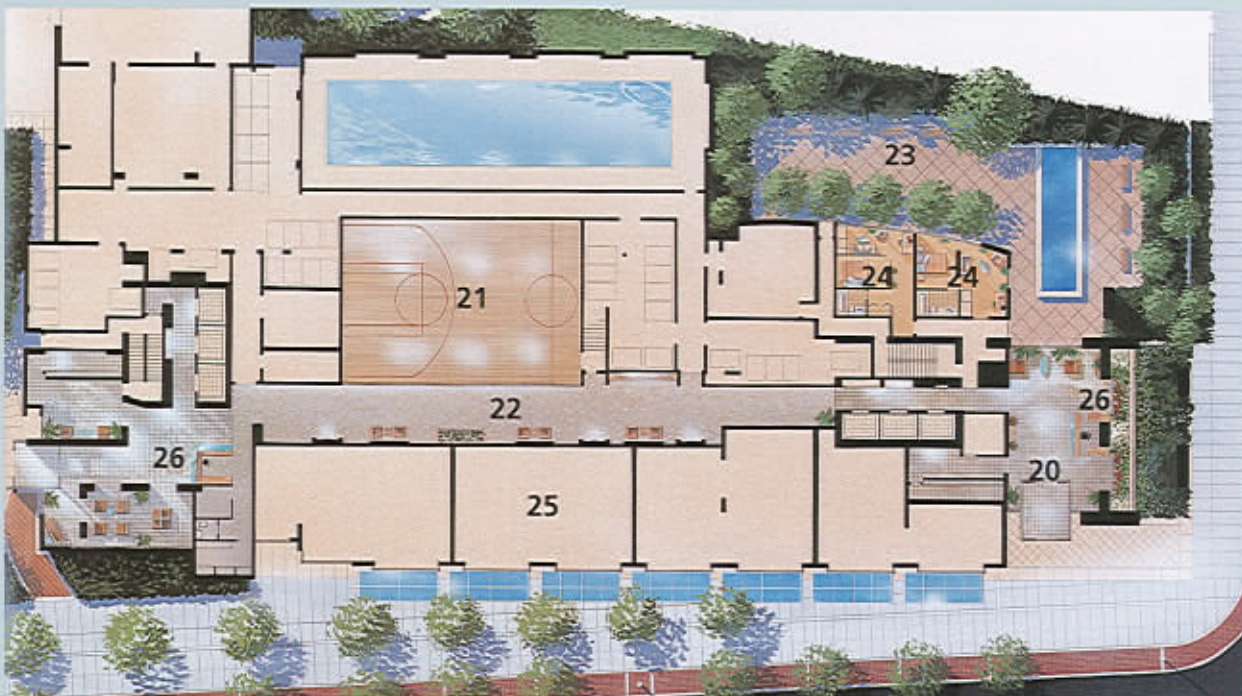
10. Upper level gallery
11. Business centre
12. Women's change room

20. Double height Apex lobby C & D
21. Basketball half court
22. Viewing gallery
23. Outdoor terrace & reflecting pond
24. Guest suites
25. Front Street retail
26. Concierge stations

Club Vista West - 2nd Floor



Club Vista West - Ground Floor





CITYPLACE
COOL. CONNECTED. COSMOPOLITAN.

Presentation Centre
23 Spadina Avenue
Toronto Ontario
M5V 3M5
T. 416.813.0999
F. 416.813.0600
www.cityplace.ca

Plug into the Urban Beat. The Downtown Village. The Digital Neighborhood.
The Shape of things to come.

APEX BUILDING FEATURES

A stunning architecturally designed residential building located in the heart of the city's theatre and sports districts, between downtown and the waterfront. Suites designed to have mostly floor to ceiling window to maximize light and views of downtown and the water.

A 28 storey and 36 storey tower, including 24 hour concierge, double volume lobby, a lavish courtyard with water feature, Spectacular Club Vista with a party room, home theatre, extensive health club facilities, guest suite and more. CityPlace is the Digital Neighbourhood and planned to be the most technologically advanced community in Canada.

APEX SUITE FEATURES

Choice of Granite, or Limestone flooring in the foyer. 45-oz cut pile Carpeting in the livingroom and dining room and bedrooms. Spacious balcony in most suites. State of the Art Security.

Deluxe Kitchen

Designer wood veneer cabinetry. Granite Countertops. Complete appliance collection, self cleaning oven, full size refrigerator, Built-in space microwave oven with integrated hood fan vented to exterior, Dishwasher, Washer/dryer.

Bathroom

Porcelain tile flooring, Granite countertop, extra deep Soaker tub. Premium bathroom fixtures.

Options to be purchased at a later date.

1. Hardwood Floor
2. Stainless Steel Appliances
3. Custom Closet Doors (where applicable)

Suite Type	Approx. Suite Size	Balcony Size (S.F.)	Starting Price
One Bedroom	525	30 s.f.	\$113,700
One Bedroom + Den	618	28 s.f.	\$136,100
Two Bedroom + Den	863	26 s.f.	\$179,900
Two Bedroom + Den	1012	36 s.f.	\$222,900
One Bdrm + Den PH	635	20 s.f.	\$166,800
Two Bdrm + Den PH	1178	42 s.f.	\$320,300

Deposit Structure: 5% with Agreement of Purchase and Sale, 5% in 120 days, 5% in 210 days, 5% in 300 days, 5% on occupancy.

Maintenance Fees: Estimated at \$0.36 per square foot, including utilities.

Occupancy Date: March 1, 2002

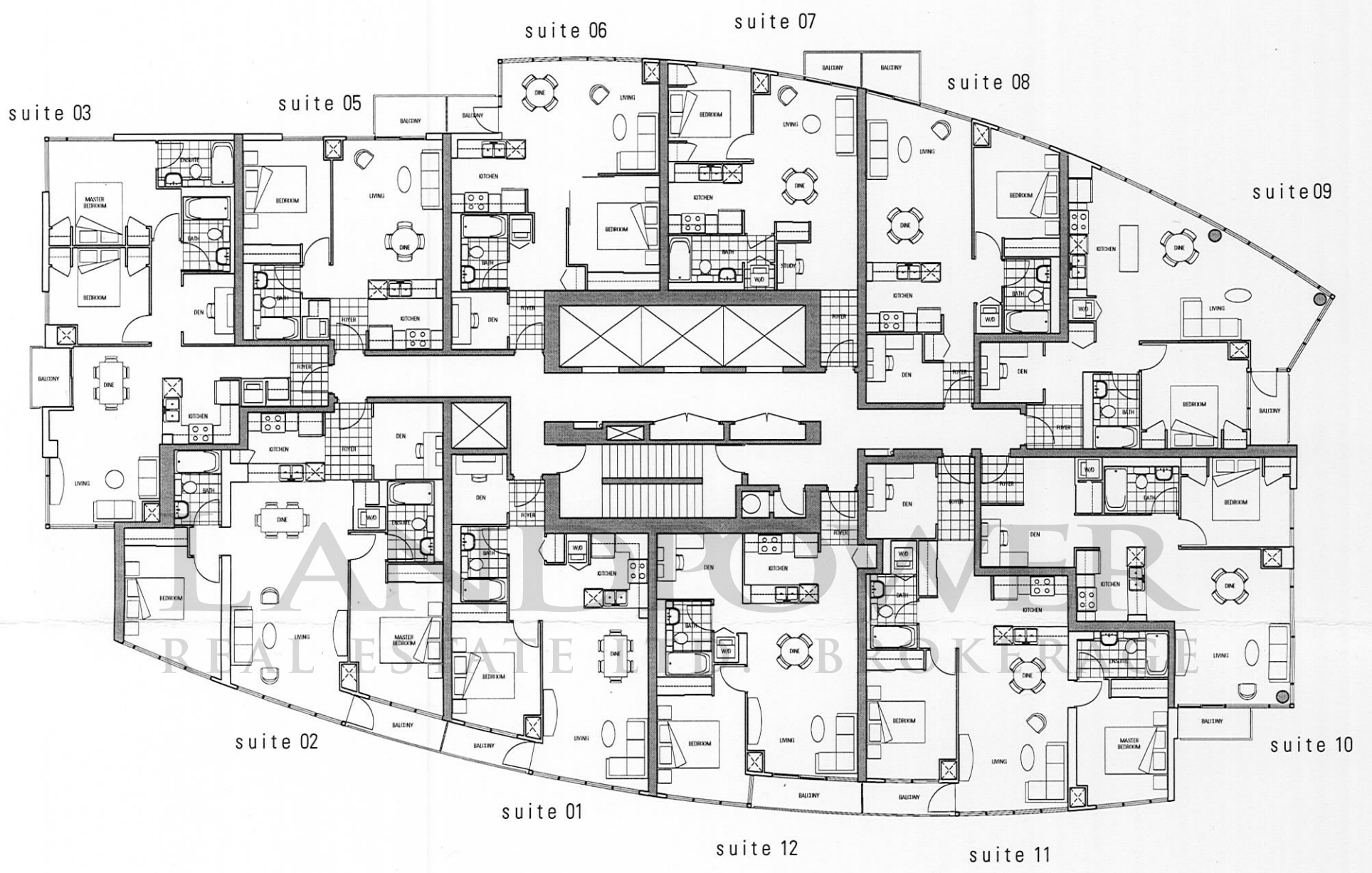
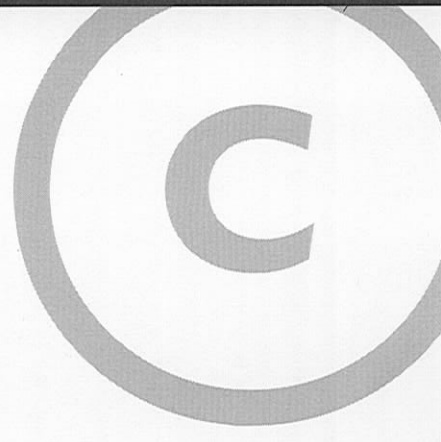
Taxes: Estimated at 1.25% of the purchase price.

Parking: \$16,000 **Tandem:** \$22,000

Locker: \$2,500

Prices and specifications subject to change without notice. E.& O. E.

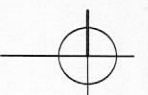
03/25/00

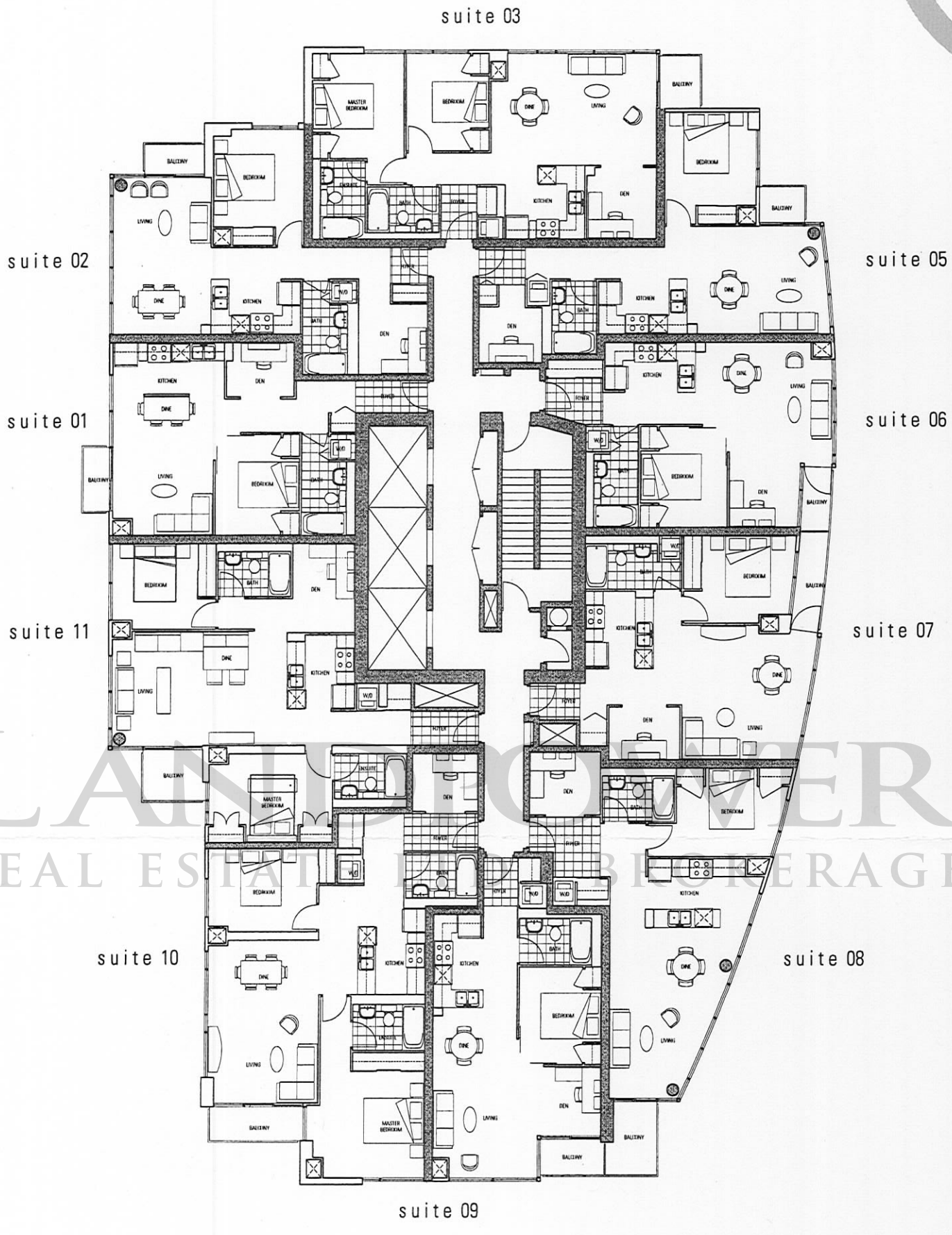
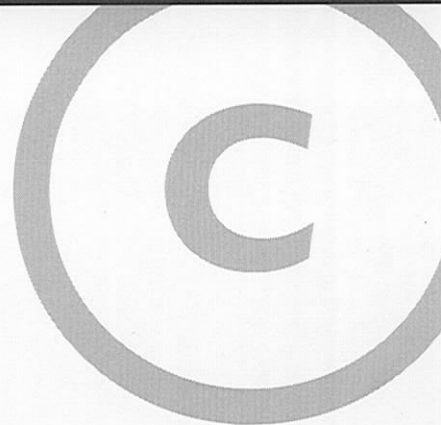


typical floor

6th to 39th floors

suite	area	balcony area	bedrooms
01	668 sqft	35 sqft	1+den with balcony
02	1012 sqft	36 sqft	2+den with balcony
03*	863 sqft	26 sqft	2+den with balcony
05	525 sqft	30 sqft	1 with balcony
06	646 sqft	22 sqft	1+den with balcony
07	585 sqft	20 sqft	1+study with balcony
08	618 sqft	28 sqft	1+den with balcony
09	733 sqft	32 sqft	1+den with balcony
10	690 sqft	26 sqft	1+den with balcony
11	935 sqft	35 sqft	2+den with balcony
12	696 sqft	42 sqft	1+den with balcony
* 03 (flrs. 32-37)	877 sqft	26 sqft	1+den with balcony



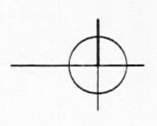


LANE DEVELOPER
REAL ESTATE BROKERAGE

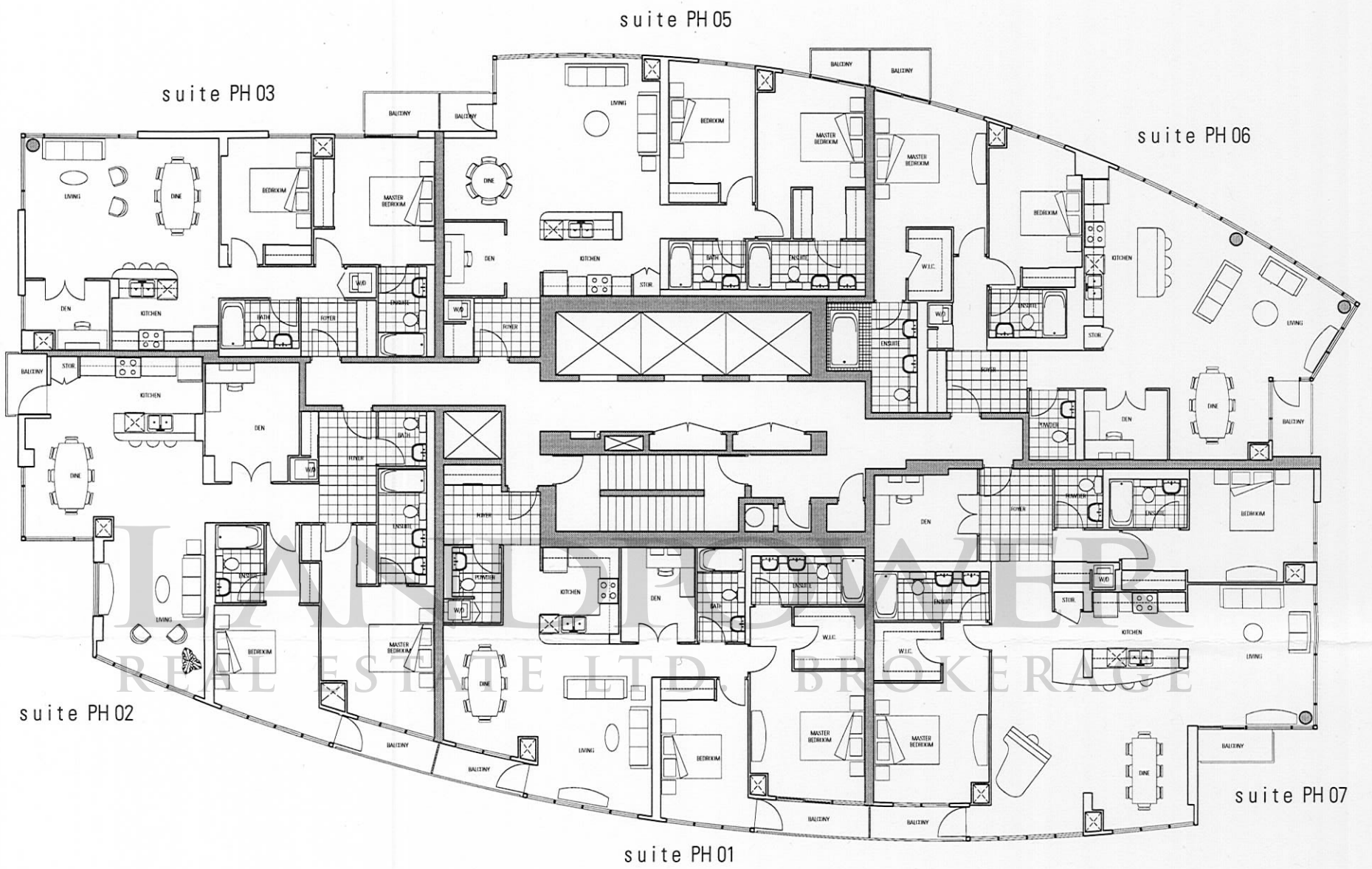
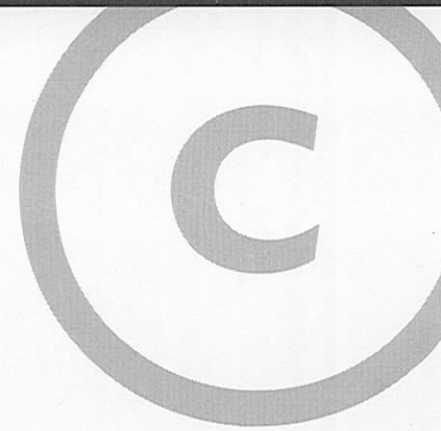
typical floor

6th to 30th floors

suite	area	balcony area	bedrooms
01	635 sqft	20 sqft	1 + den with balcony
02	675 sqft	23 sqft	1 + den with balcony
03	850 sqft	26 sqft	2 + den with balcony
05	636 sqft	20 sqft	1 + den with balcony
06	617 sqft	22 sqft	1 + den with balcony
07	678 sqft	35 sqft	1 + den with balcony
08	733 sqft	45 sqft	1 + den with balcony
09	605 sqft	28 sqft	1 + den with balcony
10	1001 sqft	38 sqft	2 + den with balcony
11	950 sqft	38 sqft	2 + den with balcony



The Developer reserves the right to make minor revisions to interior partition walls and kitchen island locations.

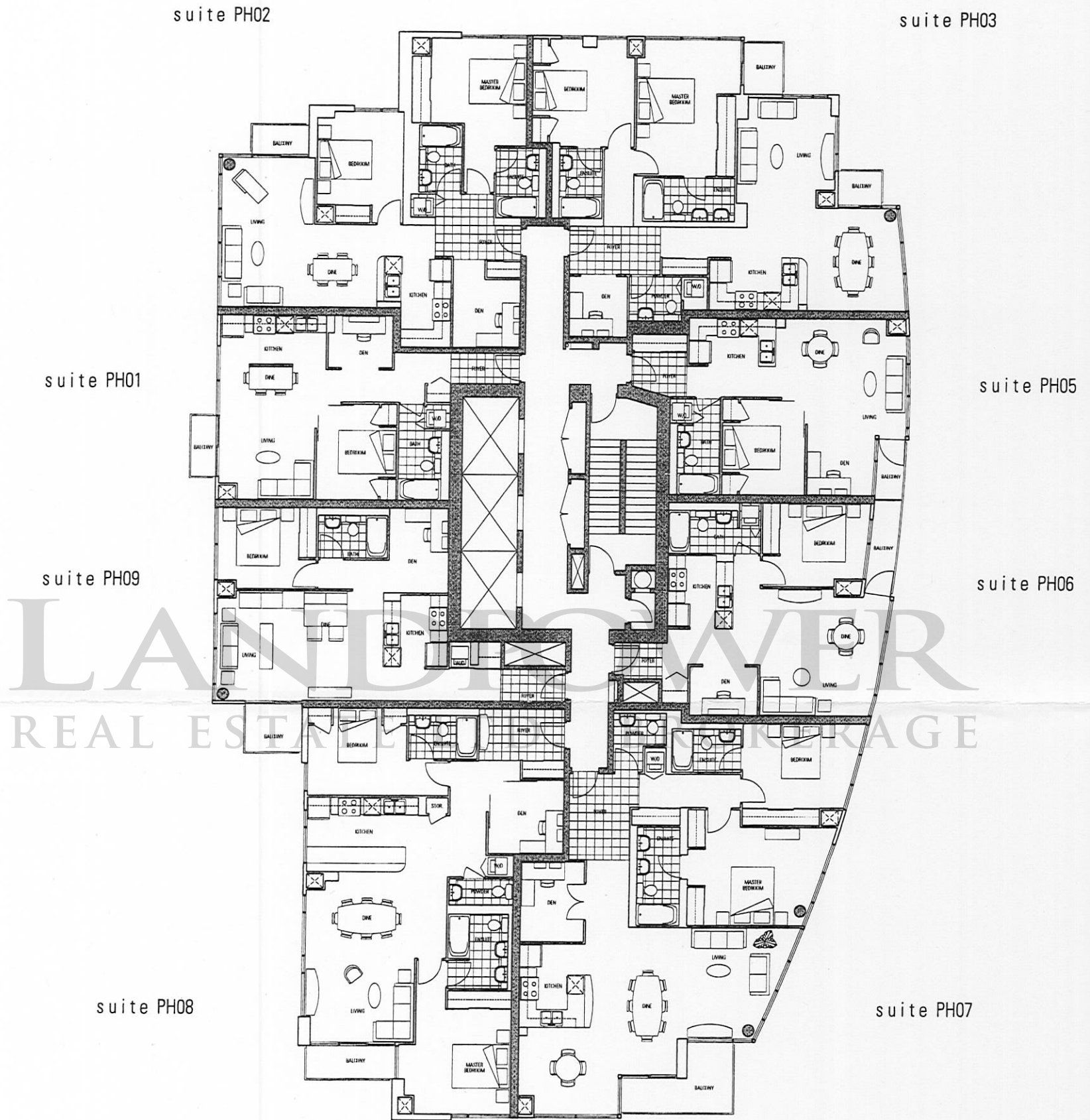
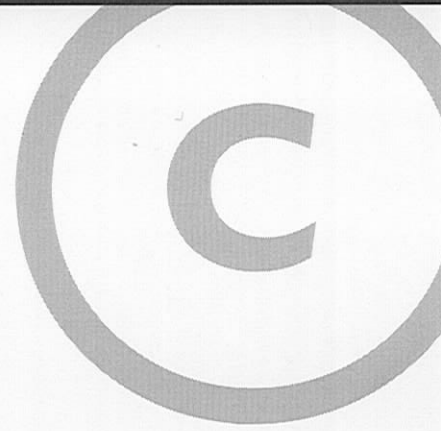


penthouse floor

penthouse and subpenthouse floors

suite	area	balcony area	bedrooms
PH01	1321 sqft	42 + 35 sqft	2+den with 2 balconies
PH02	1376 sqft	36 + 26 sqft	2+den with 2 balconies
PH03	1008 sqft	30 sqft	2+den with balcony
PH05	1178 sqft	22 + 20 sqft	2+den with 2 balconies
PH06	1408 sqft	32 + 28 sqft	2+den with 2 balconies
PH07	1632 sqft	35 + 26 sqft	2+den with 2 balconies

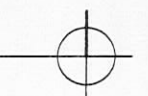




penthouse floor

31st to 32nd floors

suite	area	balcony area	bedrooms
PH01	635 sqft	20 sqft	1 + den with balcony
PH02	1005 sqft	23 sqft	2 + den with balcony
PH03	1150 sqft	26 + 20 sqft	2 + den with balcony
PH05	617 sqft	22 sqft	1 + den with balcony
PH06	678 sqft	35 sqft	1 + den with balcony
PH07	1350 sqft	28 + 45 sqft	2 + den with balcony
PH08	1210 sqft	38 sqft	2 + den with balcony
PH09	735 sqft	38 sqft	1 + den with balcony



LANDPOWER

REAL ESTATE LTD. BROKERAGE



Presentation Centre
23 Spadina Avenue
Toronto, Ontario M5V 3M5
Canada
Tel: 416-813-0999
Fax: 416-813-0600